

Inxs - Mystify

♩ = 129,701691

Track 1 $\frac{4}{4}$

Track 1 5

Track 2

Track 1 7

Track 2

Track 1 9

Track 2

Track 1 12

Track 2


Track 1 14

Track 2


The image displays a musical score for the song 'Mystify' by the band Inxs. It is presented in a multi-track format, with two tracks labeled 'Track 1' and 'Track 2' repeated for measures 1 through 14. The score begins with a tempo marking of a quarter note equal to 129,701691. The time signature is 4/4. Track 1, which is the guitar part, uses a rhythmic notation where 'x' marks indicate fretted notes. Track 2, which is the piano part, is written in standard musical notation with a treble clef. The piano part features a complex, syncopated melody with many beamed eighth and sixteenth notes, and includes dynamic markings such as 'f' (forte) and 'mf' (mezzo-forte). The guitar part provides a steady, rhythmic accompaniment with a consistent pattern of notes and rests.

16

Track 1

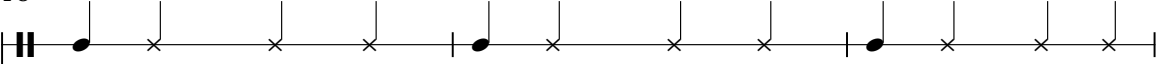


Track 2

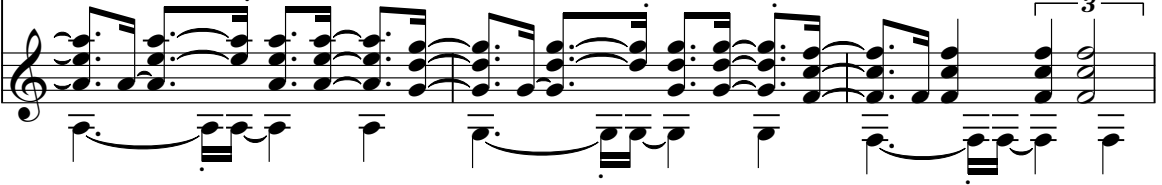


18

Track 1

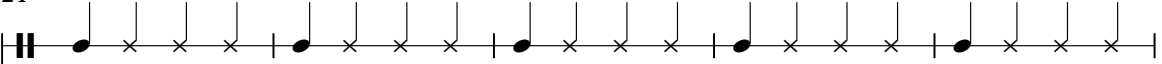


Track 2

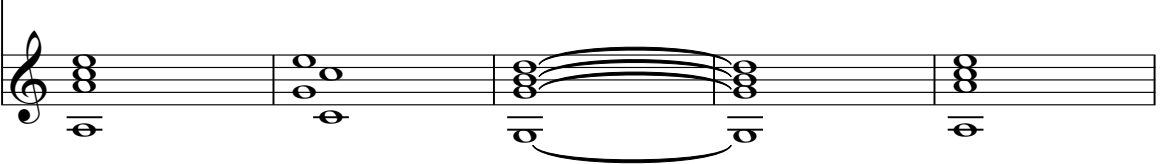


21

Track 1

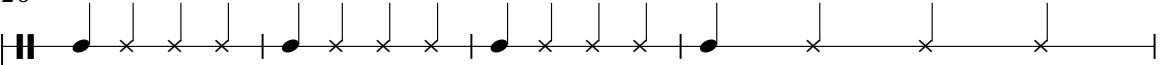


Track 2

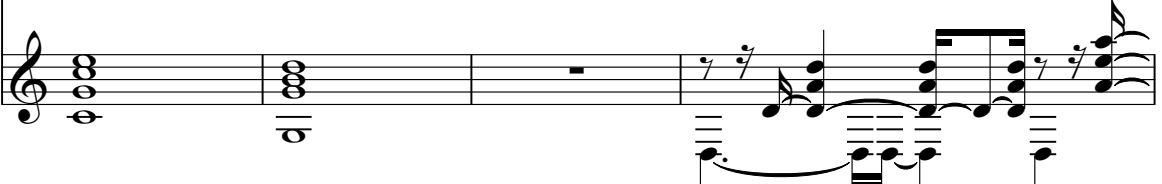


26

Track 1

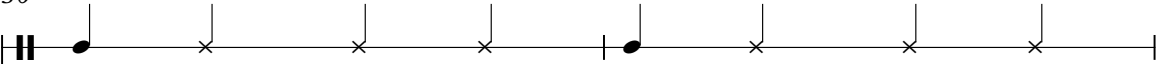


Track 2




30

Track 1



Track 2



32

Track 1



Track 2



34

Track 1

Track 2

37

Track 1

Track 2

39

Track 1

Track 2

41

Track 1

Track 2

44

Track 1

Track 2

49

Track 1

Track 2

53

Track 1

Track 2

56

Track 1

Track 2

60

Track 1

Track 2

62

Track 1

Track 2

63

Track 1

Track 2

64

Track 1

Track 2

67

Track 1

Track 2

71

Track 1

Track 2

74

Track 1

Track 2

75

Track 1

Track 2

76

Track 1

Track 2

77

Track 1

Track 2

78

Track 1

Track 2

79

Track 1

Track 2

80

Track 1

Track 2

81

Track 1

Track 2

82

Track 1

Track 2

83

Track 1

Track 2

84

Track 1

Track 2

Two tracks of musical notation for measures 84 and 85. Track 1 is a guitar track with a treble clef and a capo on the second fret. It features a complex, multi-layered texture with many notes beamed together, and several 'x' marks above the staff indicating muted notes. Track 2 is a piano accompaniment track with a treble clef, showing a melodic line with various rhythmic values and accidentals.

85

Track 1

Track 2

Two tracks of musical notation for measures 85 and 86. Track 1 continues the complex guitar texture with beamed notes and 'x' marks. Track 2 continues the piano accompaniment with a melodic line.

86

Track 1

Track 2

Two tracks of musical notation for measures 86 and 87. Track 1 shows the guitar part with its characteristic dense texture. Track 2 shows the piano accompaniment with a melodic line.

87

Track 1

Track 2

Two tracks of musical notation for measures 87 and 88. Track 1 continues the guitar part. Track 2 continues the piano accompaniment.

88

Track 1

Track 2

Two tracks of musical notation for measures 88 and 89. Track 1 continues the guitar part. Track 2 continues the piano accompaniment.

89

Track 1

Track 2

Two tracks of musical notation for measures 89 and 90. Track 1 continues the guitar part. Track 2 continues the piano accompaniment, featuring a triplet of eighth notes in the final measure of the system.

90

Track 1

Track 2

91

Track 1

Track 2

92

Track 1

Track 2

96

Track 1

Track 2

100

Track 1

Track 2

101

Track 1

Track 2

104

Track 1

Track 2

3

106

Track 1

Track 2

107

Track 2

109

Track 2

110

Track 2

111

Track 2

113

Track 2

117

Track 2

120

Track 2

10

Track 2

Musical staff 121, featuring a treble clef, a key signature of one sharp (F#), and a 3/4 time signature. The staff contains a complex melodic line with many beamed notes and rests. A bracket above the staff indicates a triplet of eighth notes starting at measure 121.5. The staff ends with a double bar line.

Track 2

Musical staff 122, featuring a treble clef, a key signature of one sharp (F#), and a 3/4 time signature. The staff contains a complex melodic line with many beamed notes and rests. A bracket above the staff indicates a triplet of eighth notes starting at measure 122.5. The staff ends with a double bar line.

Track 2

Musical staff 123, featuring a treble clef, a key signature of one sharp (F#), and a 3/4 time signature. The staff contains a complex melodic line with many beamed notes and rests. A bracket above the staff indicates a triplet of eighth notes starting at measure 123.5. The staff ends with a double bar line.

Track 2

Musical staff 125, featuring a treble clef, a key signature of one sharp (F#), and a 3/4 time signature. The staff contains a complex melodic line with many beamed notes and rests. A bracket above the staff indicates a triplet of eighth notes starting at measure 125.5. The staff ends with a double bar line.

Track 2

Musical staff 127, featuring a treble clef, a key signature of one sharp (F#), and a 3/4 time signature. The staff contains a complex melodic line with many beamed notes and rests. A bracket above the staff indicates a triplet of eighth notes starting at measure 127.5. The staff ends with a double bar line.

Track 2

Musical staff 130, featuring a treble clef, a key signature of one sharp (F#), and a 3/4 time signature. The staff contains a complex melodic line with many beamed notes and rests. A bracket above the staff indicates a triplet of eighth notes starting at measure 130.5. The staff ends with a double bar line.

Track 2

Musical staff 132, featuring a treble clef, a key signature of one sharp (F#), and a 3/4 time signature. The staff contains a complex melodic line with many beamed notes and rests. A bracket above the staff indicates a triplet of eighth notes starting at measure 132.5. The staff ends with a double bar line.

Track 2

Musical staff 134, featuring a treble clef, a key signature of one sharp (F#), and a 3/4 time signature. The staff contains a complex melodic line with many beamed notes and rests. A bracket above the staff indicates a triplet of eighth notes starting at measure 134.5. The staff ends with a double bar line.

Track 2

Musical staff 135, featuring a treble clef, a key signature of one sharp (F#), and a 3/4 time signature. The staff contains a complex melodic line with many beamed notes and rests. A bracket above the staff indicates a triplet of eighth notes starting at measure 135.5. The staff ends with a double bar line.

Track 2

Musical staff 136, featuring a treble clef, a key signature of one sharp (F#), and a 3/4 time signature. The staff contains a complex melodic line with many beamed notes and rests. A bracket above the staff indicates a triplet of eighth notes starting at measure 136.5. The staff ends with a double bar line.

Track 2

Musical staff 141, featuring a treble clef, a key signature of one sharp (F#), and a 3/4 time signature. The staff contains a complex melodic line with many beamed notes and rests. A bracket above the staff indicates a triplet of eighth notes starting at measure 141.5. The staff ends with a double bar line.

Track 1

Inxs - Mystify

♩ = 129,701691

7

13

19

25

31

37

43

49

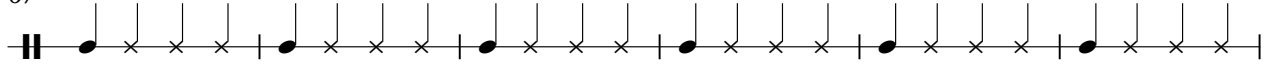
55

V.S.

61



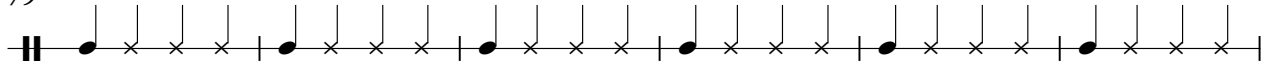
67



73



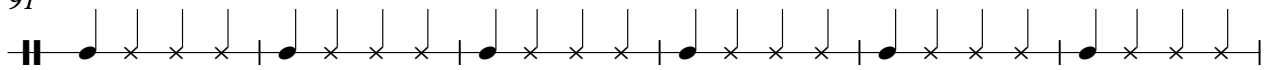
79



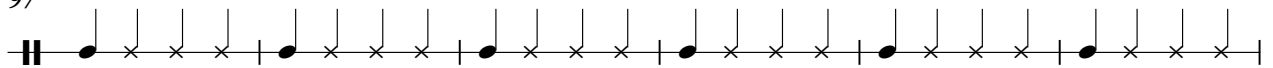
85



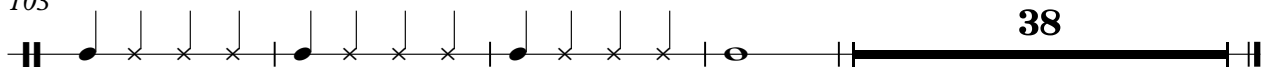
91



97



103



38

Track 2

Inxs - Mystify

♩ = 129,701691

4

7

10

13

15

18

21

Musical score for Track 2, measures 29-61. The score is written in treble clef with a key signature of one flat (Bb). It features a complex rhythmic pattern with many beamed eighth and sixteenth notes, often in a 3/4 or 6/8 feel. The bass line consists of a steady eighth-note accompaniment. Measure 42 includes a triplet of eighth notes. Measure 46 features a series of chords with a fermata. Measure 53 has a melodic line with a fermata. Measure 58 includes a triplet of eighth notes. Measure 61 features a complex melodic line with a fermata.

Track 2

63

64

68

73

75

76

77

78

79

80

3

The image displays a musical score for a track labeled "Track 2". The score is written on ten staves, numbered 63 through 80. The notation is complex, featuring a variety of note values, rests, and dynamic markings. A bracket above the first staff indicates a triplet of notes. The score is written in a single system, with measures 63 through 80. The notation includes many beamed notes and rests, suggesting a fast or intricate piece of music. The key signature is one sharp (F#), and the time signature is 4/4. The score ends with a double bar line and a fermata over the final note.

V.S.

Trak 2

81

82

83

84

85

86

87

88

89

90

91

93

99

101

105

107

109

110

111

113

Track 2

3

3

3

5

V.S.

Musical score for Track 2, measures 117-135. The score is written on ten staves, each with a treble clef and a key signature of one sharp (F#). The music is highly complex, featuring dense chordal textures and intricate melodic lines. Measure 121 contains a triplet of eighth notes. Measure 135 ends with a triplet of eighth notes. The notation includes various note values, rests, and dynamic markings.

137

Track 2

141