

Linkin Park - Papercut

♩ = 160,060066

Intro Drums

intro guitar



7

Bass Drums

snare

hi-hat

crash

Intro Drums

intro guitar

OD guitar

drone bass



12

Bass Drums

snare

hi-hat

crash

intro guitar

OD guitar

drone bass



17

Bass Drums
snare
hi-hat
crash
OD guitar
drone bass

Detailed description: This system covers measures 17 to 21. The bass drums play a consistent eighth-note pattern. The snare drum plays a steady quarter-note pulse. The hi-hat features a rhythmic pattern of eighth notes with occasional accents. The crash cymbal is used for accents in measures 18 and 20. The OD guitar part consists of a repeating eighth-note sequence with fret numbers 4, 4, 4, 0, 0, 0, 0, 4, 4. The drone bass provides a melodic line in the bass clef, primarily using notes with a sharp sign (F#).



22

Bass Drums
snare
hi-hat
crash
OD guitar
drone bass

Detailed description: This system covers measures 22 to 26. The bass drums continue with their eighth-note pattern. The snare drum maintains its quarter-note pulse. The hi-hat pattern becomes more complex, incorporating sixteenth notes and accents. The crash cymbal has a few scattered accents. The OD guitar part includes fret numbers 4, 4, 4, 0, 0, 0, 0, 4, 4, 5, 5, 0, 4, 4, 4, 0, 0, 0, 0, 4, 4, 4, 4, 0, 0, 0, 0. The drone bass continues its melodic line with various note values and accidentals.



27

Bass Drums
snare
hi-hat
crash
splash
OD guitar
drone bass

Detailed description: This system covers measures 27 to 31. The bass drums play eighth notes. The snare drum plays quarter notes. The hi-hat has a more active pattern with eighth notes and accents. The crash cymbal has a few accents, and a splash cymbal is used in measure 29. The OD guitar part includes fret numbers 0, 4, 4, 5, 5, 0, 4, 4, 4, 0, 0, 0, 0, 4, 4, 4, 4, 0, 0, 0, 0, 4, 4. The drone bass continues its melodic line.

32

Bass Drums

snare

hi-hat

crash

intro guitar

OD guitar

drone bass



37

Bass Drums

snare

hi-hat

crash

intro guitar

OD guitar

drone bass



42

Bass Drums

snare

hi-hat

crash

OD guitar

drone bass

47

Bass Drums
snare
hi-hat
crash
OD guitar
drone bass



52

Bass Drums
snare
hi-hat
crash
intro guitar
OD guitar
drone bass



57

Bass Drums
snare
hi-hat
crash
intro guitar
OD guitar
drone bass

62

Bass Drums

snare

hi-hat

crash

intro guitar

OD guitar

drone bass



67

Bass Drums

snare

hi-hat

crash

intro guitar

OD guitar

drone bass



72

snare

hi-hat

Intro Drums

intro guitar

OD guitar

drone bass

77

Bass Drums

snare

hi-hat

crash

Intro Drums

intro guitar

last verse harmonics

OD guitar

drone bass

melodic vocals

Melodic vocal high



82

Bass Drums

snare

hi-hat

crash

intro guitar

last verse harmonics

OD guitar

drone bass

melodic vocals

Melodic vocal high

87

Bass Drums

snare

hi-hat

crash

intro guitar

last verse harmonics

OD guitar

drone bass

melodic vocals

Melodic vocal high



92

Bass Drums

snare

hi-hat

crash

intro guitar

last verse harmonics

OD guitar

drone bass

melodic vocals

96

Bass Drums

snare

hi-hat

crash

intro guitar

last verse harmonics

OD guitar

drone bass

melodic vocals

Melodic vocal high



101

Bass Drums

snare

hi-hat

crash

intro guitar

last verse harmonics

OD guitar

drone bass

melodic vocals

Melodic vocal high

106

Bass Drums

snare

hi-hat

crash

intro guitar

last verse harmonics

OD guitar

drone bass

melodic vocals

Melodic vocal high



111

Bass Drums

snare

hi-hat

crash

intro guitar

last verse harmonics

OD guitar

drone bass

melodic vocals

Bass Drums

Linkin Park - Papercut

♩ = 160, 250 068
7



11



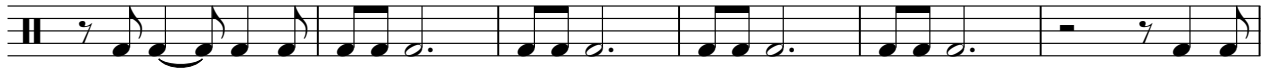
15



19



23



29



34



38



43



47



53



58



62



67



72



83



87



91



95



99



103



107



111



114



Linkin Park - Papercut

snare

♩ = 160,000000
7

13

20

27

34

41

48

55

62

69

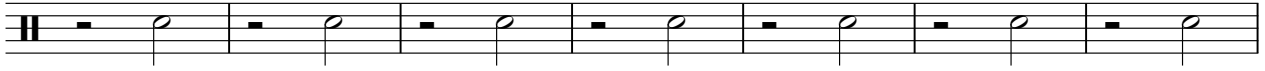
2

snare

75



80



87



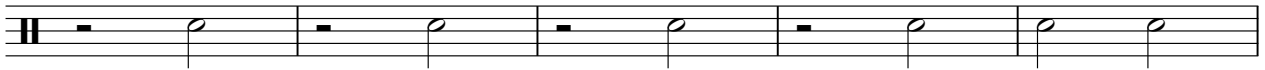
94



101



108



113



Linkin Park - Papercut

hi-hat

♩ = 160,060068

7

12

17

22

27

32

37

42

47

52

2

hi-hat

57



62



67



71



81



85



89



93



97



101



105



109



113



Linkin Park - Papercut

crash

♩ = 160, 250 068

7

15

23

34

42

50

57

64

71

87

9

Copyright © 2001-2003 Linkin Park/ Arrangement by James Ratzlaff

2

crash

96

A guitar tab for measure 96. It consists of a single staff with a double bar line at the beginning. The staff is divided into eight measures. The first measure contains a double bar line. The second, fourth, sixth, and eighth measures each contain a small black square on the second line. The third, fifth, and seventh measures are empty. Above the staff, there are five chord diagrams, each consisting of a circle with an 'X' and a vertical line below it, positioned above the first, second, fourth, sixth, and eighth measures.

105

A guitar tab for measure 105. It consists of a single staff with a double bar line at the beginning. The staff is divided into six measures. The first measure contains a double bar line. The second, fourth, and sixth measures each contain a small black square on the second line. The third and fifth measures are empty. Above the staff, there are three chord diagrams, each consisting of a circle with an 'X' and a vertical line below it, positioned above the second, fourth, and sixth measures.

112

A guitar tab for measure 112. It consists of a single staff with a double bar line at the beginning. The staff is divided into eight measures. The first measure contains a double bar line. The second through seventh measures each contain a single note on the first line. The eighth measure contains a thick black bar with the number '3' above it, indicating a triplet. Above the staff, there are seven chord diagrams, each consisting of a circle with an 'X' and a vertical line below it, positioned above the second through eighth measures.

splash

Linkin Park - Papercut

♩ = 160,050000

27 **90**

Musical notation for a guitar splash in 4/4 time. It consists of three measures. The first measure is a whole rest. The second measure contains a quarter rest followed by a quarter note with a cross above it. The third measure is a whole rest. The number 27 is above the first measure, and 90 is above the third measure.

Intro Drums

Linkin Park - Papercut

♩ = 160,050068

Musical notation for the first staff of the drum intro, measures 1-4. The staff is in 4/4 time and contains a series of eighth notes with 'x' marks below them, indicating a specific drum pattern.

5

Musical notation for the second staff of the drum intro, measures 5-8. The staff continues the drum pattern with eighth notes and 'x' marks.

8

64

Musical notation for the third staff of the drum intro, measures 9-12. The staff begins with a measure containing a solid black bar, followed by measures of eighth notes with 'x' marks.

75

41

Musical notation for the fourth staff of the drum intro, measures 13-16. The staff continues the drum pattern and ends with a measure containing a solid black bar.

Copyright © 2001-2003 Linkin Park/ Arrangement by James Ratzlaff

Linkin Park - Papercut

intro guitar

♩ = 160, 250 0 68

3

7

11

15

15

33

37

16

56

60

64

68

Copyright © 2001-2003 Linkin Park/ Arrangement by James Ratzlaff

V.S.

72



76



80



84



88



92



96



100



104



108



112



115



Linkin Park - Papercut

last verse harmonics

♩ = 160, 050068

79 2

84

2

89

2 2

96

2

101

2 2

108

2

112

5

Linkin Park - Papercut

OD guitar

♩ = 160,060068

7

11

E	0 0	4 0	0 0 0 0 0	0 0	4 0
B	2 2 1	2 2 1	4 4 4 4 4	2 2 1	4 0
A	2 2	2 2	4 4 4 4 4	2 2	4 0
D	4 4 4	4 4 4	4 4 4 4 4	4 4 4	4 0
G	4 4 4	4 4 4	4 4 4 4 4	4 4 4	4 0
B	4 4 4	4 4 4	4 4 4 4 4	4 4 4	4 0
E	4 4 4	4 4 4	4 4 4 4 4	4 4 4	4 0
A	4 4 4	4 4 4	4 4 4 4 4	4 4 4	4 0

15

T	0 0 0 0 0	0 0	4 0	0 0 0 0 0	0 0	4 0
A	4 4 4 4 4	2 2 1	2 2 1	4 4 4 4 4	2 2 1	4 0
B	2 2 2 2 2	2 2	2 2	4 4 4 4 4	2 2	4 0
E	4 4 4	4 4 4	4 4 4	4 4 4 4 4	4 4 4	4 0
A	4 4 4	4 4 4	4 4 4	4 4 4 4 4	4 4 4	4 0

19

T	0 0 0					
A	4 4 4					
B	2 2 2	5 5 0	4 4 4	0 0 0 0 0	0 4 4	0 0 0 0

23

T						
A						
B	0 4 4	4 4 4	0 0 0 0 0	0 4 4	4 4 4	0 0 0 0

27

T						
A						
B	0 4 4	5 5 0	4 4 4	0 0 0 0 0	0 4 4	4 4 4

31

T						
A						
B	0 4 4	5 5 0	4 4 4	0 0 0 0 0	0 4 4	4 4 4

36

T		0 0	4 0	0 0 0 0 0	0 0	4 0	0 0 0 0 0
A		2 2 1	2 2 1	4 4 4 4 4	2 2 1	2 2 1	4 4 4 4 4
B	0 4 4	4 4 4	2 2 2 2 2	4 4 4 4 4	4 4 4	2 2 2 2 2	4 4 4 4 4

40

T		0 0	4 0	0 0 0 0 0	0 0	4 0	0 0 0
A		2 2 1	2 2 1	4 4 4 4 4	2 2 1	2 2 1	4 4 4
B	4 4 4	4 4 4	2 2 2 2 2	4 4 4 4 4	4 4 4	2 2 2	5 5 0

44

T							
A							
B	4 4 4	0 0 0 0	0 4 4	5 5 0	4 4 4	0 0 0 0	0 4 4

48

T							
A							
B	4 4 4	0 0 0 0	0 4 4	5 5 0	4 4 4	0 4 4	5 5 0

Copyright © 2001-2003 Linkin Park/ Arrangement by James Ratzlaff

V.S.

T		0	0 0 0 0 0	2	
A	2 4 4 4 4	2 2 2 2 2 4	4 4 4 4 2	4 4 4 4 4	2 4 4 4 4
B	0 2 2 2 2	0 0 0 0 0 2	2 2 2 2 2	2 2 2 2 2	0 2 2 2 2

96

T	0	0 0 0 0 0	2		0
A	2 2 2 2 2 4	4 4 4 4 2	4 4 4 4 4	2 4 4 4 4	2 2 2 2 2 4
B	0 0 0 0 0 2	2 2 2 2 2	4 4 4 4 4	2 4 4 4 4	0 0 0 0 0 2

101

T	0 0 0 0 0	2		0	0 0 0 0 0
A	4 4 4 4 2	4 4 4 4 4	2 4 4 4 4	2 2 2 2 2 4	4 4 4 4 2
B	2 2 2 2 2	4 4 4 4 4	2 4 4 4 4	0 0 0 0 0 2	2 2 2 2 2

106

T	2		0	0 0 0 0 0	2
A	4 4 4 4 4	2 4 4 4 4	2 2 2 2 2 4	4 4 4 4 2	4 4 4 4 4
B	4 4 4 4 4	2 4 4 4 4	0 0 0 0 0 2	2 2 2 2 2	4 4 4 4 4

111

T		0	0 0 0 0 0
A	2 4 4 4 4	2 2 2 2 2 4	4 4 4 4 2
B	0 2 2 2 2	0 0 0 0 0 2	2 2 2 2 2

114

T	2				2
A	4 4 4 4 4	2 4 4 4 4			
B	2 2 2 2 2	0 2 2 2 2	5 5 5 0	4 4 4	

Linkin Park - Papercut

drone bass

♩ = 160,060068



11



15



19



22



25



28



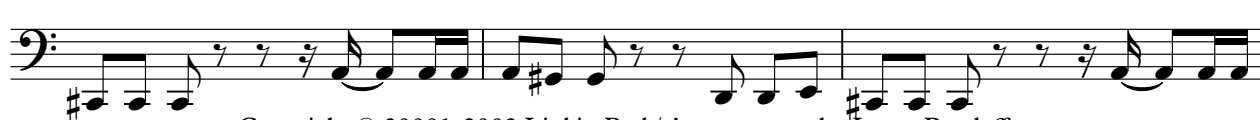
32



36



40



Copyright © 2001-2003 Linkin Park/ Arrangement by James Ratzlaff

V.S.

43



81



85



89



93



97



101



105



109



113



Melodic vocal high

Linkin Park - Papercut

♩ = 160,050068

79 4

88

4

98

4

107

6 3

Copyright © 2001-2003 Linkin Park/ Arrangement by James Ratzlaff