

# Little River Band - Help Is On Its Way

♩ = 106,001450

Drums

Bass



4

Drums

RymGt

LeadGt

Bass



6

Vocal

Drums

RymGt

LeadGt

Bass

Sequenced by Stephen R. Smith

2

9

Drums

RymGt

LeadGt

Bass

3

3



12

Vocal

Drums

RymGt

Bass



14

Vocal

Drums

RymGt

Bass

16

Vocal

Drums

RymGt

RymGt

Bass

This musical score covers measures 16 and 17. The vocal line features a melodic sequence with three triplet markings. The drums play a consistent rhythmic pattern. The first RymGt part has a complex chordal texture with many accidentals, while the second RymGt part is mostly silent. The bass line provides a steady accompaniment with a triplet marking in measure 17.



18

Vocal

Drums

RymGt

RymGt

Bass

This musical score covers measures 18 and 19. The vocal line continues with a melodic sequence. The drums maintain their rhythmic pattern. The first RymGt part features a series of chords with various accidentals, while the second RymGt part remains mostly silent. The bass line continues its accompaniment.

20

Vocal

Drums

RymGt

RymGt

LeadGt

Bass

Detailed description: This block contains the musical notation for measures 20 and 21. It features six staves: Vocal, Drums, RymGt (two staves), LeadGt, and Bass. The Vocal staff has a treble clef and contains a melodic line with a triplet of eighth notes in measure 21. The Drums staff has a double bar line at the start and shows a rhythmic pattern of eighth notes. The two RymGt staves have treble clefs and contain chordal accompaniment with some slurs. The LeadGt staff has a treble clef and is mostly empty with a few notes. The Bass staff has a bass clef and contains a steady eighth-note bass line.



22

Vocal

Drums

RymGt

RymGt

LeadGt

Bass

Detailed description: This block contains the musical notation for measures 22 and 23. It features six staves: Vocal, Drums, RymGt (two staves), LeadGt, and Bass. The Vocal staff has a treble clef and contains a melodic line with several triplets of eighth notes. The Drums staff has a double bar line at the start and shows a rhythmic pattern of eighth notes. The two RymGt staves have treble clefs and contain chordal accompaniment. The LeadGt staff has a treble clef and is mostly empty. The Bass staff has a bass clef and contains a steady eighth-note bass line with several triplets of eighth notes.

24

Vocal

Drums

RymGt

Gtmel

Gtmel

RymGt

LeadGt

Bass

This musical score covers measures 24 and 25. It features seven staves: Vocal, Drums, Rhythm Guitar (RymGt), two Guitar Melody (Gtmel) staves, Rhythm Guitar (RymGt), Lead Guitar (LeadGt), and Bass. The vocal line includes a triplet of eighth notes in measure 25. The drums play a consistent pattern of eighth notes. The rhythm guitar has a melodic line with triplets in measures 24 and 25. The bass line features a steady eighth-note pattern with triplets in measures 24 and 25.



26

Vocal

Drums

RymGt

Gtmel

Gtmel

RymGt

LeadGt

Bass

This musical score covers measures 26 and 27. It features seven staves: Vocal, Drums, Rhythm Guitar (RymGt), two Guitar Melody (Gtmel) staves, Rhythm Guitar (RymGt), Lead Guitar (LeadGt), and Bass. The vocal line continues with a melodic line. The drums play a consistent pattern of eighth notes. The rhythm guitar has a melodic line with a triplet in measure 27. The bass line features a steady eighth-note pattern with a triplet in measure 27.

28

Vocal

Drums

RymGt

Gtmel

Gtmel

Bass



30

Vocal

Drums

RymGt

Gtmel

Gtmel

Bass

33

Vocal

Drums

RymGt

Gtmel

Gtmel

RymGt

Bass

Detailed description: This system contains measures 33 and 34. The vocal line features a melodic phrase with triplet markings. The drums play a steady rhythm with some triplet patterns. The rhythm guitar (RymGt) provides a harmonic accompaniment with chords and single notes. The guitar melodic lines (Gtmel) have a more active role with eighth and sixteenth notes, including triplet runs. The bass line follows a similar rhythmic pattern to the drums. A double bar line is present at the end of measure 34.



35

Vocal

Drums

RymGt

Gtmel

Gtmel

RymGt

LeadGt

Bass

Detailed description: This system contains measures 35 and 36. The vocal line continues with a melodic phrase, featuring a triplet in measure 35. The drums maintain the rhythmic pattern. The rhythm guitar (RymGt) continues with harmonic support. The guitar melodic lines (Gtmel) are more active, with eighth and sixteenth notes. The lead guitar (LeadGt) has a more prominent role in measure 36, playing a melodic line. The bass line continues with a rhythmic pattern.

37

Vocal

Drums

RymGt

RymGt

LeadGt

Bass



39

Vocal

Drums

RymGt

RymGt

LeadGt

Bass



41

Vocal

Drums

RymGt

RymGt

LeadGt

Bass

Detailed description: This block contains the musical score for measures 41 and 42. It features six staves: Vocal, Drums, RymGt (two staves), LeadGt, and Bass. The vocal line has a melodic phrase with some rests. The drums play a consistent rhythmic pattern. The RymGt parts feature sustained chords and some melodic movement. The LeadGt part has sparse notes. The Bass part has a steady eighth-note line with triplets in the first two measures.



43

Vocal

Drums

RymGt

RymGt

Bass

Scifi

Piano

Detailed description: This block contains the musical score for measures 43, 44, and 45. It features seven staves: Vocal, Drums, RymGt (two staves), Bass, Scifi, and Piano. The vocal line is mostly silent with a few notes at the beginning. The drums play a rhythmic pattern. The RymGt parts have sustained chords. The Bass part continues with eighth notes. The Scifi and Piano parts have a melodic line with a triplet in measure 45.

46

Vocal

Scifi

Piano



48

Vocal

Scifi

Piano



50

Vocal

Scifi

Piano

53

Vocal

Drums

RymGt

RymGt

LeadGt

Bass

Scifi

Piano



56

Drums

RymGt

RymGt

LeadGt

Bass

58

Drums

RymGt

RymGt

LeadGt

Bass



60

Drums

RymGt

RymGt

LeadGt

Bass

62

Vocal

Drums

RymGt

Gtmel

RymGt

LeadGt

Bass

Detailed description: This system contains measures 62 and 63. The Vocal line is silent. The Drums line features a complex rhythmic pattern with snare and bass drum hits. The RymGt (Rhythm Guitar) line consists of sustained chords. The Gtmel (Guitar Melody) line is silent. The second RymGt line has a rhythmic pattern with triplets. The LeadGt line has a melodic line with triplets. The Bass line has a rhythmic pattern with triplets.



64

Vocal

Drums

RymGt

Gtmel

Gtmel

RymGt

LeadGt

Bass

Detailed description: This system contains measures 64 and 65. The Vocal line has a melodic phrase. The Drums line has a rhythmic pattern. The RymGt line has sustained chords. The Gtmel lines have melodic phrases. The second RymGt line has sustained chords. The LeadGt line has a melodic phrase. The Bass line has a rhythmic pattern with triplets.

66

Vocal

Drums

RymGt

Gtmel

Gtmel

Bass

Detailed description: This musical score block covers measures 66 and 67. It features six staves: Vocal, Drums, RymGt (Rhythm Guitar), Gtmel (Guitar Melody), another Gtmel, and Bass. The key signature has two sharps (F# and C#). Measure 66 shows a vocal line with eighth notes and triplets, a drum line with a steady eighth-note pattern, a RymGt line with chords, and two Gtmel lines with eighth-note runs and triplets. Measure 67 continues these patterns with similar rhythmic and melodic motifs.



68

Vocal

Drums

RymGt

Gtmel

Gtmel

RymGt

Bass

Detailed description: This musical score block covers measures 68 and 69. It features six staves: Vocal, Drums, RymGt, Gtmel, another Gtmel, and Bass. The key signature remains two sharps. Measure 68 shows a vocal line with eighth notes and triplets, a drum line with eighth notes and triplets, a RymGt line with chords, and two Gtmel lines with eighth-note runs and triplets. Measure 69 continues these patterns, with the RymGt staff showing a rest for the first half of the measure and the Bass staff featuring a triplet in the second half.

70

Vocal

Drums

RymGt

Gtmel

Gtmel

Bass



72

Vocal

Drums

RymGt

Gtmel

Gtmel

RymGt

LeadGt

Bass

74

Vocal

Drums

RymGt

RymGt

LeadGt

Bass

Detailed description: This block contains the musical score for measures 74 and 75. It features six staves: Vocal, Drums, Rhythm Guitar (RymGt), Rhythm Guitar (RymGt), Lead Guitar (LeadGt), and Bass. The Vocal staff has a treble clef and a triplet of eighth notes in the first measure. The Drums staff has a double bar line and a 7/8 time signature. The two RymGt staves have treble clefs and play chords. The LeadGt staff has a treble clef and contains some rests and notes. The Bass staff has a bass clef and a 7/8 time signature, featuring a triplet of eighth notes in the first measure.



76

Vocal

Drums

RymGt

RymGt

LeadGt

Bass

Detailed description: This block contains the musical score for measures 76 and 77. It features six staves: Vocal, Drums, Rhythm Guitar (RymGt), Rhythm Guitar (RymGt), Lead Guitar (LeadGt), and Bass. The Vocal staff has a treble clef and a triplet of eighth notes in the first measure. The Drums staff has a double bar line and a 7/8 time signature. The two RymGt staves have treble clefs and play chords. The LeadGt staff has a treble clef and contains some rests and notes. The Bass staff has a bass clef and a 7/8 time signature, featuring a triplet of eighth notes in the first measure.



78

Vocal

Drums

RymGt

RymGt

LeadGt

Bass



80

Vocal

Drums

RymGt

RymGt

LeadGt

Bass

82

Vocal

Drums

RymGt

RymGt

LeadGt

Bass

Detailed description: This musical score block covers measures 82 and 83. It features six staves: Vocal, Drums, RymGt (two staves), LeadGt, and Bass. The time signature is 7/8. The vocal line consists of eighth-note chords. The drums play a complex pattern with many rests. The rhythm guitars play a steady eighth-note accompaniment. The lead guitar has a few notes in measure 83. The bass line is a walking eighth-note bass.



84

Vocal

Drums

RymGt

RymGt

LeadGt

Bass

Detailed description: This musical score block covers measures 84 and 85. It features six staves: Vocal, Drums, RymGt (two staves), LeadGt, and Bass. The time signature is 7/8. The vocal line continues with eighth-note chords. The drums maintain their complex pattern. The rhythm guitars play a steady eighth-note accompaniment. The lead guitar has a few notes in measure 85. The bass line is a walking eighth-note bass with triplets in measure 85.

86

Vocal

Drums

RymGt

Gtmel

RymGt

LeadGt

Bass

Detailed description: This system contains measures 86 and 87. The Vocal line features a melodic phrase with eighth and sixteenth notes. The Drums part shows a consistent rhythmic pattern with snare and bass drum hits. The Rhythm Guitar (RymGt) part has a triplet of eighth notes in the first measure of measure 86. The Gtrmel (Guitar Melody) part is silent. The Lead Guitar (LeadGt) part is also silent. The Bass line features a complex triplet pattern of eighth notes.



88

Vocal

Drums

RymGt

Gtmel

Gtmel

RymGt

LeadGt

Bass

Detailed description: This system contains measures 88, 89, and 90. The Vocal line has a melodic phrase in measure 88 followed by rests. The Drums part continues with a steady rhythm. The Rhythm Guitar (RymGt) part has a triplet of eighth notes in measure 88. The Gtrmel (Guitar Melody) part has a melodic line with eighth notes and a triplet in measure 90. The Lead Guitar (LeadGt) part has a melodic line with a triplet in measure 90. The Bass line features a complex rhythmic pattern with eighth and sixteenth notes.

91

Drums

RymGt

Gtmel

Gtmel

LeadGt

Bass

Detailed description: This system contains measures 91 and 92. The Drums part features a complex rhythmic pattern with many sixteenth notes. The RymGt part consists of chords and arpeggios. The two Gtmel parts have melodic lines with triplets. The LeadGt part has a melodic line with triplets and a long note in measure 92. The Bass part has a simple bass line with triplets.



93

Drums

RymGt

Gtmel

Gtmel

LeadGt

Bass

Ahhs

Detailed description: This system contains measures 93 and 94. The Drums part continues with a similar rhythmic pattern. The RymGt part has chords. The Gtmel parts have melodic lines with triplets. The LeadGt part has a melodic line with a sextuplet in measure 93 and a triplet in measure 94. The Bass part has a bass line with triplets. The Ahhs part has a vocal line with sustained notes.

95

Vocal

Drums

RymGt

Gtmel

Gtmel

LeadGt

Bass

Ahhs

Detailed description: This system contains measures 95 and 96. The Vocal line is silent in measure 95 and begins in measure 96 with a melodic phrase. The Drums line features a complex pattern with a triplet in measure 96. The RymGt line consists of a rhythmic accompaniment with chords. The two Gtmel lines play a melodic line with various accidentals. The LeadGt line has a melodic line with a triplet in measure 95. The Bass line provides a steady bass line with eighth notes. The Ahhs line has a sustained chord in measure 95.



97

Drums

RymGt

Gtmel

Gtmel

LeadGt

Bass

Ahhs

Detailed description: This system contains measures 97 and 98. The Drums line continues with a complex pattern and a triplet in measure 97. The RymGt line continues with its rhythmic accompaniment. The two Gtmel lines continue with their melodic lines. The LeadGt line has a melodic line with a triplet in measure 97. The Bass line continues with its bass line. The Ahhs line has a sustained chord in measure 97 and a melodic phrase in measure 98.

99

Vocal

Drums

RymGt

Gtmel

Gtmel

LeadGt

Bass

Ahhs

Detailed description: This musical score covers measures 99 and 100. The Vocal line is silent. The Drums line shows a steady rhythm with 'x' marks for cymbals. The RymGt line features a complex chordal texture with many accidentals. The two Gtmel lines have melodic lines with triplets. The LeadGt line has a melodic line with triplets. The Bass line has a rhythmic pattern with triplets. The Ahhs line has a melodic line with triplets.



101

Drums

RymGt

Gtmel

Gtmel

LeadGt

Bass

Ahhs

Detailed description: This musical score covers measures 101 and 102. The Drums line continues with a steady rhythm. The RymGt line has a complex chordal texture. The two Gtmel lines have melodic lines with triplets. The LeadGt line has a melodic line with triplets. The Bass line has a rhythmic pattern with triplets. The Ahhs line has a melodic line with triplets.

102

Drums

RymGt

Gtmel

Gtmel

LeadGt

Bass

Ahhs

This section of the score covers measures 102 and 103. It features a drum part with a steady rhythm and some triplet patterns. The Rhythm Guitar (RymGt) and Ahhs parts play chords, with the Ahhs part having a triplet in measure 103. The two Guitar Melody (Gtmel) parts and the Lead Guitar (LeadGt) part play a complex melodic line with many triplets and slurs. The Bass part provides a simple, rhythmic accompaniment.



103

Vocal

Drums

RymGt

Gtmel

Gtmel

LeadGt

Bass

Ahhs

This section of the score covers measures 103 and 104. It begins with a vocal line in measure 103. The drum part continues with a consistent rhythm. The Rhythm Guitar (RymGt) part plays a series of chords. The two Guitar Melody (Gtmel) parts and the Lead Guitar (LeadGt) part continue with their melodic lines, including a triplet in the second Gtmel part. The Bass part maintains its rhythmic accompaniment. The Ahhs part has a triplet in measure 104.

105

Drums

RymGt

Gtmel

Gtmel

LeadGt

Bass

Ahhs

Detailed description: This system contains measures 105 through 109. The Drums part features a consistent pattern of eighth notes on the snare and bass drum. The RymGt part consists of sustained chords with some melodic movement. The two Gtmel parts play a melodic line with a triplet in measure 105. The LeadGt part provides a harmonic accompaniment with various chords and intervals. The Bass part follows a rhythmic pattern of eighth notes. The Ahhs part is a sustained chord that changes in measure 109.



106

Drums

RymGt

Gtmel

Gtmel

LeadGt

Bass

Ahhs

Detailed description: This system contains measures 106 through 110. The Drums part continues with the same eighth-note pattern. The RymGt part has sustained chords with some changes in measure 110. The Gtmel parts continue their melodic line, with a flat in measure 110. The LeadGt part provides harmonic support with various chords. The Bass part continues its eighth-note pattern. The Ahhs part features a melodic line that changes in measure 110.



107

Vocal

Drums

RymGt

Gtmel

Gtmel

LeadGt

Bass

Ahhs



108

Vocal

Drums

RymGt

Gtmel

Gtmel

LeadGt

Bass

# Little River Band - Help Is On Its Way

Vocal

♩ = 106,001450

6 5

13

16

19

22

25

28

31

34

37

Sequenced by Stephen R. Smith

V.S.

40

44

50

53

65

67

70

72

75

79

82

85

89

100

105

# Little River Band - Help Is On Its Way

## Drums

♩ = 106,001450

4

7

11

14

17

21

24

27

30

Sequenced by Stephen R. Smith

V.S.

34

3

3

36

38

40

43

11

57

3

60

63

67

3

70

Drums

73

Musical notation for measure 73, featuring a drum staff with a complex rhythmic pattern including a triplet.

76

Musical notation for measure 76, featuring a drum staff with a complex rhythmic pattern.

79

Musical notation for measure 79, featuring a drum staff with a complex rhythmic pattern including a triplet.

82

Musical notation for measure 82, featuring a drum staff with a complex rhythmic pattern.

84

Musical notation for measure 84, featuring a drum staff with a complex rhythmic pattern.

86

Musical notation for measure 86, featuring a drum staff with a complex rhythmic pattern.

89

Musical notation for measure 89, featuring a drum staff with a complex rhythmic pattern including a triplet.

92

Musical notation for measure 92, featuring a drum staff with a complex rhythmic pattern.

95

Musical notation for measure 95, featuring a drum staff with a complex rhythmic pattern including triplets.

98

Musical notation for measure 98, featuring a drum staff with a complex rhythmic pattern.

V.S.

Drums

102

3

105

107

3



♩ = 106,001450

3

7

11

14

17

21

25

28

31

36

Sequenced by Stephen R. Smith

V.S.



92



Musical staff for measure 92, featuring a treble clef, a key signature of two sharps (F# and C#), and a 3/4 time signature. The staff contains a sequence of chords and eighth notes, with some notes beamed together.

95



Musical staff for measure 95, continuing the sequence of chords and eighth notes from the previous measure.

98



Musical staff for measure 98, featuring a treble clef, a key signature of two sharps, and a 3/4 time signature. The staff contains a sequence of chords and eighth notes, with some notes beamed together.

102



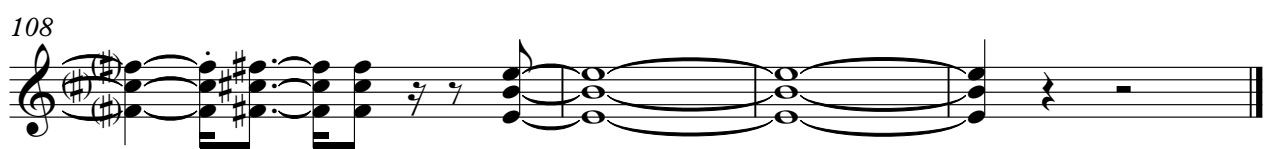
Musical staff for measure 102, featuring a treble clef, a key signature of two sharps, and a 3/4 time signature. The staff contains a sequence of chords and eighth notes, with a triplet of eighth notes indicated by a bracket and the number '3' above it.

105



Musical staff for measure 105, featuring a treble clef, a key signature of two sharps, and a 3/4 time signature. The staff contains a sequence of chords and eighth notes, with some notes beamed together.

108



Musical staff for measure 108, featuring a treble clef, a key signature of two sharps, and a 3/4 time signature. The staff contains a sequence of chords and eighth notes, with some notes beamed together.

# Little River Band - Help Is On Its Way

Gtmel

♩ = 106,001450

24 2

29

32

35 27 2

66 3

69 3

71

73 13 2

Sequenced by Stephen R. Smith



Little River Band - Help Is On Its Way

Gtmel

♩ = 106,001450

24 2

29

32

35 29

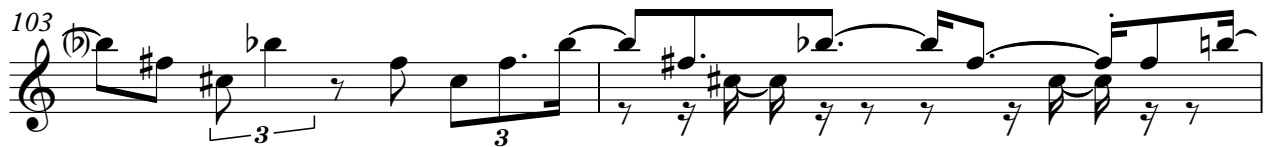
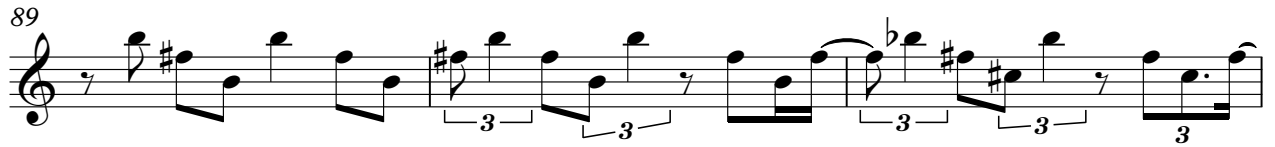
66

69

71

73 15

Sequenced by Stephen R. Smith



♩ = 106,001450

16 2

21

24

27 3 6

37

40 11

55 3 3

59

62 3 3

64 3 4

Detailed description: This is a guitar tab for the song 'Help Is On Its Way' by the Little River Band. The score is written in 4/4 time with a tempo of 106,001450. It consists of ten staves of music. The first staff starts with a 16-measure rest followed by a 2-measure rest, then begins with eighth-note chords. The second staff continues with eighth-note chords. The third staff has eighth-note chords. The fourth staff starts with a triplet eighth-note chord, followed by a 6-measure rest, and then eighth-note chords. The fifth staff continues with eighth-note chords. The sixth staff has eighth-note chords and ends with an 11-measure rest. The seventh staff features a mix of eighth-note chords and triplets. The eighth staff continues with eighth-note chords and triplets. The ninth staff has eighth-note chords and triplets. The tenth staff begins with eighth-note chords, followed by a 3-measure rest and a 4-measure rest.

Sequenced by Stephen R. Smith



73



78



82



85



# Little River Band - Help Is On Its Way

LeadGt

♩ = 106,001450

3

7

11

8

24

9

36

41

12

56

59

62

64

7

Sequenced by Stephen R. Smith

Musical score for guitar lead, measures 73-107. The score is written on a single staff in treble clef. It features various rhythmic patterns, including eighth and sixteenth notes, and rests. Measure numbers 73, 78, 83, 90, 93, 96, 99, 102, 105, and 107 are indicated at the start of their respective lines. The score includes several triplets (marked with '3') and a double bar line with a '2' above it in measure 86. The key signature changes from one sharp (F#) to two sharps (F# and C#) between measures 90 and 93. The piece concludes with a final double bar line and a '3' above it in measure 107.

# Little River Band - Help Is On Its Way

Bass

♩ = 106,001450

4

7

10

13

15

17

19

22

24

Sequenced by Stephen R. Smith

V.S.

27



30



34



37



39



41



44



58



60



62



64



67



70



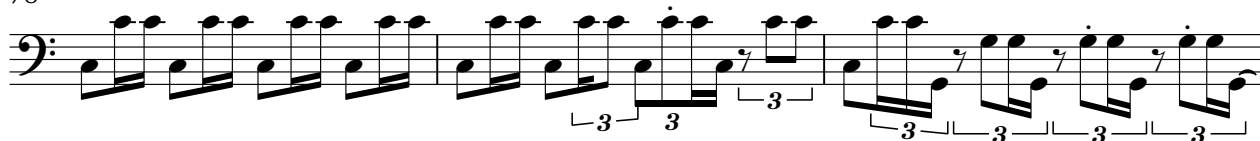
73



75



78



81



83



85



87



V.S.

90

Musical staff for measure 90, bass clef. The staff contains a sequence of eighth and sixteenth notes with various accidentals (sharps and naturals). A triplet of eighth notes is indicated at the end of the staff.

93

Musical staff for measure 93, bass clef. The staff contains a sequence of eighth and sixteenth notes with various accidentals. Three triplet markings are present over groups of eighth notes.

96

Musical staff for measure 96, bass clef. The staff contains a sequence of eighth and sixteenth notes with various accidentals.

99

Musical staff for measure 99, bass clef. The staff contains a sequence of eighth and sixteenth notes with various accidentals.

102

Musical staff for measure 102, bass clef. The staff contains a sequence of eighth and sixteenth notes with various accidentals.

105

Musical staff for measure 105, bass clef. The staff contains a sequence of eighth and sixteenth notes with various accidentals.

107

Musical staff for measure 107, bass clef. The staff contains a sequence of eighth and sixteenth notes with various accidentals.

108

Musical staff for measure 108, bass clef. The staff contains a sequence of eighth and sixteenth notes with various accidentals. A triplet marking is present at the beginning, and a double bar line with a '2' above it indicates the end of the measure.

Ahhs

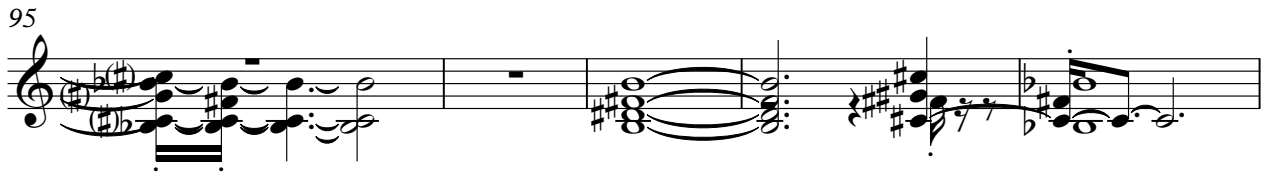
# Little River Band - Help Is On Its Way

♩ = 106,001450

92



95



100



105

4



Sequenced by Stephen R. Smith



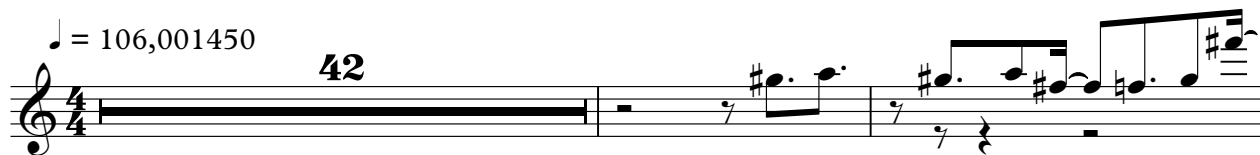


Piano

Little River Band - Help Is On Its Way

♩ = 106,001450

42



45



47



49



51



54

56



Sequenced by Stephen R. Smith