

Louise Attaque - Viens Je T`emmene Au Vent

♩ = 139,000500 ♩ = 139,001511
J'T'EMMENE AU VENT

Melodie

Drums

Guitare

Basse

♩ = 139,000500 ♩ = 139,001511

Violon

Violon

Violon

Melodie

Violon

Melodie

Violon

17

Melodie

Guitare

Violon

18

Melodie

Guitare

Violon

19

Melodie

Guitare

Violon

20

Melodie

Guitare

Basse

Violon

21

Melodie

Drums

Guitare

Basse

Violon

23

Melodie

Drums

Guitare

Basse

Violon

This musical score for measure 23 consists of five staves. The Melodie staff (bass clef) begins with a whole rest followed by a half note G2. The Drums staff (percussion clef) shows a complex rhythmic pattern with eighth notes and rests. The Guitare staff (treble clef) features a series of chords and melodic lines with slurs. The Basse staff (bass clef) plays a steady eighth-note bass line. The Violon staff (treble clef) plays a rhythmic accompaniment of eighth-note chords.

24

Melodie

Drums

Guitare

Basse

Violon

This musical score for measure 24 consists of five staves. The Melodie staff (bass clef) has a whole rest followed by a half note G#2. The Drums staff (percussion clef) continues with a rhythmic pattern similar to measure 23. The Guitare staff (treble clef) shows chords and melodic lines with slurs. The Basse staff (bass clef) continues with an eighth-note bass line. The Violon staff (treble clef) continues with eighth-note chords.

25

Melodie

Drums

Guitare

Basse

Violon

26

Melodie

Drums

Guitare

Basse

Violon

27

Melodie

Drums

Guitare

Basse

Violon

28

Melodie

Drums

Guitare

Basse

Violon

29

Melodie

Drums

Guitare

Basse

Violon

30

Melodie

Drums

Guitare

Basse

Violon

32

Melodie

Drums

Guitare

Basse

Violon

33

Melodie

Drums

Guitare

Basse

Violon

34

Melodie

Drums

Guitare

Basse

Violon

35

Melodie

Drums

Guitare

Basse

Violon

36

Melodie

Drums

Guitare

Basse

Violon

37

Melodie

Drums

Guitare

Basse

Violon

39



Drums

Guitare

Basse

Violon

40

Drums

Guitare

Basse

Violon

41

Drums

Guitare

Basse

Violon

42

Drums

Guitare

Basse

Violon

43

Drums

Guitare

Basse

Violon

44

Drums

Guitare

Basse

Violon

45

Drums

Guitare

Basse

Violon

Detailed description: This system covers measures 45 to 47. The drum part features a consistent snare and tom pattern. The guitar part consists of chords and melodic lines, with a double bar line at the end of measure 47. The bass part provides a steady accompaniment. The violin part begins with a long, sustained note in measure 45, followed by a melodic line.

46

Drums

Guitare

Basse

Violon

Detailed description: This system covers measures 48 to 50. The drum part continues with snare and tom patterns. The guitar part includes chords and melodic lines, with a triplet in measure 49. The bass part provides a steady accompaniment. The violin part features a triplet in measure 48 and continues with a melodic line.

48

Drums

Guitare

Basse

Violon

Detailed description: This system covers measures 51 to 53. The drum part continues with snare and tom patterns. The guitar part includes chords and melodic lines. The bass part provides a steady accompaniment. The violin part continues with a melodic line.

49

Drums

Guitare

Basse

Violon

50

Drums

Guitare

Basse

Violon

51

Drums

Guitare

Basse

Violon

52

Drums

Guitare

Basse

Violon

53

Drums

Guitare

Basse

Violon

54

Melodie

Drums

Guitare

Basse

Violon

56

Melodie

Drums

Basse

58

Melodie

Drums

Basse

60

Melodie

Drums

Basse

62

Melodie

Drums

Guitare

Basse

64

Melodie

Drums

Guitare

Basse

66

Melodie

Drums

Guitare

Basse

68

Melodie

Drums

Guitare

Basse

70

Melodie

Drums

Guitare

Basse

71

Melodie

Drums

Guitare

Basse

Violon

72

Melodie

Drums

Guitare

Basse

Violon

73

Melodie

Drums

Guitare

Basse

Violon

74

Melodie

Drums

Guitare

Basse

Violon

75

Melodie

Drums

Guitare

Basse

Violon

76

Melodie

Drums

Guitare

Basse

Violon

77

Melodie

Drums

Guitare

Basse

Violon

78

Melodie

Drums

Guitare

Basse

Violon

Melodie

Drums

Guitare

Basse

Violon

Melodie

Drums

Guitare

Basse

Violon

81

Melodie

Drums

Guitare

Basse

Violon

82

Melodie

Drums

Guitare

Basse

Violon

83

Melodie

Drums

Guitare

Basse

Violon

84

Melodie

Drums

Guitare

Basse

Violon

85

Melodie

Drums

Guitare

Basse

Violon

86

Melodie

Drums

Guitare

Basse

Violon

Violon

87

Melodie

Drums

Guitare

Basse

Violon

Violon

88

Melodie

Drums

Guitare

Basse

Violon

Violon

89

Melodie

Drums

Guitare

Basse

Violon

Violon

90

Melodie

Drums

Guitare

Basse

Violon

Violon

91

Melodie

Drums

Guitare

Basse

Violon

Violon

92

Melodie

Drums

Guitare

Basse

Violon

Violon

6

93

Melodie

Drums

Guitare

Basse

Violon

Violon

94

Melodie

Drums

Guitare

Basse

Violon

Violon

Melodie

Drums

Guitare

Basse

Violon

Violon

Melodie

Drums

Guitare

Basse

Violon

Violon

97

Melodie

Drums

Guitare

Basse

Violon

Violon

98

Melodie

Drums

Guitare

Basse

Violon

Violon

99

Melodie

Drums

Guitare

Basse

Violon

Violon

3

100

Melodie

Drums

Guitare

Basse

Violon

Violon

6

101

♩ = 125,130341

Melodie

Drums

Guitare

Basse

Violon

Violon

103

Melodie

Drums

Guitare

Basse

Violon

Violon

Louise Attaque - Viens Je T`emmene Au Vent

Melodie

♩ = 139,000600 ♩ = 139,001511
J'EMMENE AU VENT

The image displays a musical score for the piece 'Louise Attaque - Viens Je T`emmene Au Vent'. The score is written in bass clef with a 4/4 time signature. It consists of ten staves of music, each starting with a measure number: 4, 9, 13, 16, 20, 23, 27, 30, 33, and 36. The music features various rhythmic patterns, including eighth and sixteenth notes, and rests. There are several triplet markings (indicated by a '3' over a bracket) and a 4-measure rest at the beginning of the first staff. The key signature changes from one sharp (F#) to two sharps (F# and C#) during the piece. The score concludes with a 15-measure rest at the end of the final staff.

54

Musical notation for measure 54, bass clef, G major. It features a triplet of eighth notes (F#, G, A) followed by a quarter note (B), a quarter rest, and a quarter note (C#). The second measure contains a quarter note (D), a quarter rest, a quarter note (E), and a quarter note (F#).

58

Musical notation for measure 58, bass clef, G major. It starts with a quarter note (F#), a quarter note (G), and a quarter note (A). The second measure has a quarter note (B), a quarter note (C#), and a quarter note (D). The third measure contains a quarter note (E), a quarter note (F#), and a quarter note (G).

61

Musical notation for measure 61, bass clef, G major. It begins with a quarter note (F#), a quarter note (G), and a quarter note (A). The second measure has a quarter note (B), a quarter note (C#), and a quarter note (D). The third measure contains a quarter note (E), a quarter note (F#), and a quarter note (G).

65

Musical notation for measure 65, bass clef, G major. It starts with a quarter note (F#), a quarter note (G), and a quarter note (A). The second measure has a quarter note (B), a quarter note (C#), and a quarter note (D). The third measure contains a quarter note (E), a quarter note (F#), and a quarter note (G).

69

Musical notation for measure 69, bass clef, G major. It begins with a quarter note (F#), a quarter note (G), and a quarter note (A). The second measure has a quarter note (B), a quarter note (C#), and a quarter note (D). The third measure contains a quarter note (E), a quarter note (F#), and a quarter note (G).

73

Musical notation for measure 73, bass clef, G major. It starts with a quarter note (F#), a quarter note (G), and a quarter note (A). The second measure has a quarter note (B), a quarter note (C#), and a quarter note (D). The third measure contains a quarter note (E), a quarter note (F#), and a quarter note (G).

76

Musical notation for measure 76, bass clef, G major. It begins with a quarter note (F#), a quarter note (G), and a quarter note (A). The second measure has a quarter note (B), a quarter note (C#), and a quarter note (D). The third measure contains a quarter note (E), a quarter note (F#), and a quarter note (G).

80

Musical notation for measure 80, bass clef, G major. It starts with a quarter note (F#), a quarter note (G), and a quarter note (A). The second measure has a quarter note (B), a quarter note (C#), and a quarter note (D). The third measure contains a quarter note (E), a quarter note (F#), and a quarter note (G).

84

Musical notation for measure 84, bass clef, G major. It begins with a quarter note (F#), a quarter note (G), and a quarter note (A). The second measure has a quarter note (B), a quarter note (C#), and a quarter note (D). The third measure contains a quarter note (E), a quarter note (F#), and a quarter note (G).

88

Musical notation for measure 88, bass clef, G major. It starts with a quarter note (F#), a quarter note (G), and a quarter note (A). The second measure has a quarter note (B), a quarter note (C#), and a quarter note (D). The third measure contains a quarter note (E), a quarter note (F#), and a quarter note (G).

92



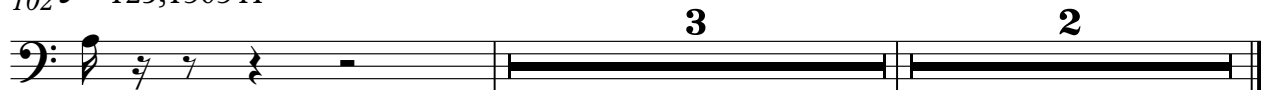
96



100



102 ♩ = 125,130341



Louise Attaque - Viens Je T`emmene Au Vent

Drums

♩ = 139,000 139,001511

11 6

21

24

26

28

30

32

34

36

38

V.S.

40

Musical notation for a drum set at measure 40. The notation is on a single staff with a double bar line on the left. It shows a continuous eighth-note pattern. The right hand (RH) plays a sequence of eighth notes on the snare and tom-toms, while the left hand (LH) plays a sequence of eighth notes on the bass drum. Some notes are marked with an 'x' to indicate a cymbal hit.

42

Musical notation for a drum set at measure 42. The notation is on a single staff with a double bar line on the left. It shows a continuous eighth-note pattern. The right hand (RH) plays a sequence of eighth notes on the snare and tom-toms, while the left hand (LH) plays a sequence of eighth notes on the bass drum. Some notes are marked with an 'x' to indicate a cymbal hit. A slur is placed over the RH notes in the second half of the measure, with a downward arrow pointing to a cymbal hit.

44

Musical notation for a drum set at measure 44. The notation is on a single staff with a double bar line on the left. It shows a continuous eighth-note pattern. The right hand (RH) plays a sequence of eighth notes on the snare and tom-toms, while the left hand (LH) plays a sequence of eighth notes on the bass drum. Some notes are marked with an 'x' to indicate a cymbal hit. A slur is placed over the RH notes in the second half of the measure, with a downward arrow pointing to a cymbal hit.

46

Musical notation for a drum set at measure 46. The notation is on a single staff with a double bar line on the left. It shows a continuous eighth-note pattern. The right hand (RH) plays a sequence of eighth notes on the snare and tom-toms, while the left hand (LH) plays a sequence of eighth notes on the bass drum. Some notes are marked with an 'x' to indicate a cymbal hit.

48

Musical notation for a drum set at measure 48. The notation is on a single staff with a double bar line on the left. It shows a continuous eighth-note pattern. The right hand (RH) plays a sequence of eighth notes on the snare and tom-toms, while the left hand (LH) plays a sequence of eighth notes on the bass drum. Some notes are marked with an 'x' to indicate a cymbal hit.

50

Musical notation for a drum set at measure 50. The notation is on a single staff with a double bar line on the left. It shows a continuous eighth-note pattern. The right hand (RH) plays a sequence of eighth notes on the snare and tom-toms, while the left hand (LH) plays a sequence of eighth notes on the bass drum. Some notes are marked with an 'x' to indicate a cymbal hit. A slur is placed over the RH notes in the second half of the measure, with a downward arrow pointing to a cymbal hit.

52

Musical notation for a drum set at measure 52. The notation is on a single staff with a double bar line on the left. It shows a continuous eighth-note pattern. The right hand (RH) plays a sequence of eighth notes on the snare and tom-toms, while the left hand (LH) plays a sequence of eighth notes on the bass drum. Some notes are marked with an 'x' to indicate a cymbal hit. A slur is placed over the RH notes in the second half of the measure, with a downward arrow pointing to a cymbal hit.

54

Musical notation for a drum set at measure 54. The notation is on a single staff with a double bar line on the left. It shows a continuous eighth-note pattern. The right hand (RH) plays a sequence of eighth notes on the snare and tom-toms, while the left hand (LH) plays a sequence of eighth notes on the bass drum. Some notes are marked with an 'x' to indicate a cymbal hit.

56

Musical notation for a drum set at measure 56. The notation is on a single staff with a double bar line on the left. It shows a continuous eighth-note pattern. The right hand (RH) plays a sequence of eighth notes on the snare and tom-toms, while the left hand (LH) plays a sequence of eighth notes on the bass drum. Some notes are marked with an 'x' to indicate a cymbal hit.

58

Musical notation for a drum set at measure 58. The notation is on a single staff with a double bar line on the left. It shows a continuous eighth-note pattern. The right hand (RH) plays a sequence of eighth notes on the snare and tom-toms, while the left hand (LH) plays a sequence of eighth notes on the bass drum. Some notes are marked with an 'x' to indicate a cymbal hit.

60



62



64



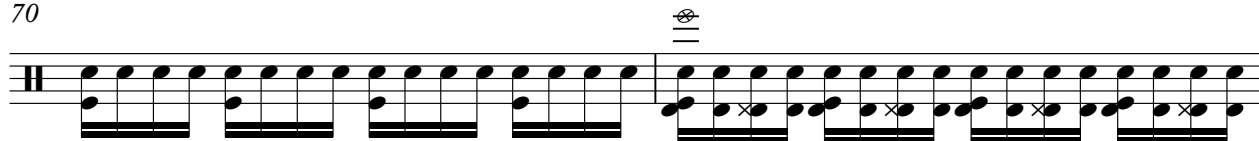
66



68



70



72



74



76



78



V.S.

80



82



84



86



88



90



92



94



96



98



Drums

100

Drum notation for measures 100 and 101. Measure 100 features a snare drum (S) on the first beat, followed by a hi-hat (HH) on the second beat, and a cymbal (C) on the third beat. The rest of the measure is filled with a steady eighth-note pattern on the snare drum. Measure 101 continues this eighth-note pattern on the snare drum. Above the staff, there are symbols for a snare drum, a hi-hat, and a cymbal.

102 ♩ = 125,130341

Drum notation for measure 102. The measure is divided into four beats. The first beat has a snare drum (S) on the first half and a cymbal (C) on the second half. The second beat has a snare drum (S) on the first half and a cymbal (C) on the second half. The third and fourth beats are marked with a large '2', indicating a double bass drum pattern. The notation uses a double bar line to separate the first two beats from the last two.

Louise Attaque - Viens Je T`emmene Au Vent

Guitare

♩ = 139,000600 ♩ = 139,001511

12

15

17

18

19

20

21

23

25

26

V.S.

This image displays a page of guitar sheet music, numbered 2, with the instrument name 'Guitare' centered at the top. The page contains ten staves of music, each labeled with a measure number: 27, 28, 29, 31, 33, 34, 35, 36, 37, and 39. The music is written in a complex, multi-measure format, featuring dense chordal textures and intricate melodic lines. The key signature is G major (one sharp), and the time signature is 3/4. The notation includes various rhythmic values such as eighth and sixteenth notes, as well as rests. Some measures contain triplets, indicated by a '3' over a bracket. The music is presented in a standard staff format with a treble clef and a key signature of one sharp. The overall style is that of a classical or contemporary guitar piece, characterized by its dense harmonic structure and technical demands.

Musical score for guitar, measures 41-52. The score is written in treble clef with a key signature of one flat (B-flat major or D minor). The music consists of a series of chords and melodic lines, often grouped by slurs. Measure 41 starts with a B-flat major chord. Measure 42 features a D minor chord. Measure 43 has a B-flat major chord. Measure 44 has a D minor chord. Measure 45 has a B-flat major chord. Measure 47 has a D minor chord. Measure 49 has a B-flat major chord. Measure 50 has a D minor chord. Measure 51 has a B-flat major chord. Measure 52 has a D minor chord. The score includes various musical notations such as slurs, ties, and dynamic markings.

53

8

63

65

67

69

71

73

74

75

76

Musical score for guitar, measures 77-90. The score is written in treble clef with a key signature of three sharps (F#, C#, G#). The time signature is 4/4. The music consists of complex chordal textures and melodic lines. Measure 77 starts with a complex chordal texture. Measure 79 features a triplet of eighth notes. Measure 81 has a key signature change to two sharps (F#, C#). Measure 82 has a key signature change to one sharp (F#). Measure 83 has a key signature change to one flat (C#). Measure 84 has a key signature change to two flats (C, F). Measure 85 has a key signature change to one flat (C). Measure 87 features a triplet of eighth notes. Measure 89 has a key signature change to one flat (C). Measure 90 has a key signature change to one sharp (F#).

V.S.

91

92

93

95

97

98

99

100

101

103

Louise Attaque - Viens Je T`emmene Au Vent

Basse

♩ = 120,000600 ♩ = 139,001511

12 5

21

25

28

32

35

39

43

47

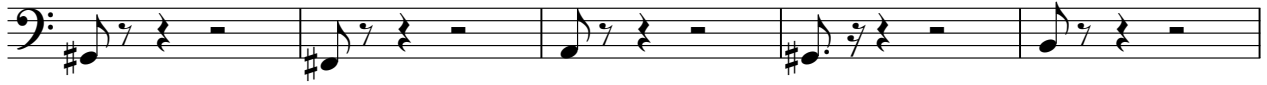
51

V.S.

55



60



65



70



74



78



82



86



90



94



98



101

♩ = 125,130341



Violon

Louise Attaque - Viens Je T`emmene Au Vent

♩ = 120,000 500 139,001511

5

7

9

11

13

16

18

20

23

V.S.

25

27

29

32

34

36

39

43

47

51

71

73

75

77

79

81

83

85

87

89

4

Violon

91



93



95



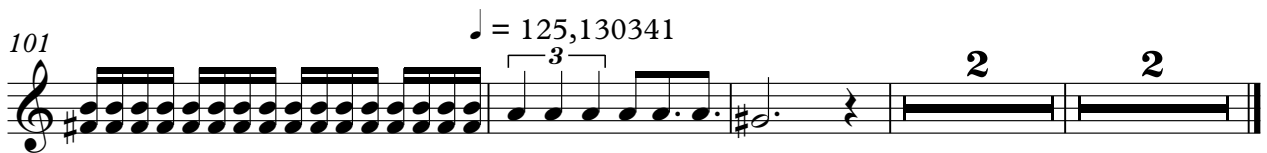
97



99



101



Violon

Louise Attaque - Viens Je T`emmene Au Vent

♩ = 130,00000009,001511

84



88



92



96



100

♩ = 125,130341

