

Luf2 - Boss Battle

♩ = 175,000076

Track 7 & 8

Track 3

Strings support

Track 2

Track 4 Intro & Track 1 Strings

Track 5 Intro

Track 6



5.4"
5.1.00
Loop start

5

Track 1

Track 7 & 8

Track 4

Track 5

Guitars support

Track 3

Strings support

Track 2

Track 4 Intro & Track 1 Strings

Track 5 Intro

Track 6

Track 1

Track 7 & 8

Track 4

Track 5

Guitars support

Track 3

Strings support

Track 2

Track 6

Detailed description: This block contains the musical notation for measures 8, 9, and 10. Track 1 (Bass) starts with a measure rest, then plays a sequence of eighth notes: G2, F2, E2, D2, C2, B1, A1, G1. Track 7 & 8 (Percussion) play a steady eighth-note pattern. Track 4 (Trumpet) plays a melodic line with eighth notes and slurs. Track 5 (Trumpet) plays a similar melodic line. Guitars support (Electric guitar) play a complex rhythmic pattern with eighth notes and slurs. Track 3 (Bass) plays a steady eighth-note pattern. Strings support (Violin) plays a melodic line with slurs. Track 2 (Cello) and Track 6 (Double Bass) play a steady eighth-note pattern.



Track 1

Track 7 & 8

Track 4

Track 5

Guitars support

Track 3

Strings support

Track 2

Track 6

Detailed description: This block contains the musical notation for measures 11, 12, and 13. Track 1 (Bass) starts with a measure rest, then plays a sequence of eighth notes: G2, F2, E2, D2, C2, B1, A1, G1. Track 7 & 8 (Percussion) play a steady eighth-note pattern. Track 4 (Trumpet) plays a melodic line with eighth notes and slurs. Track 5 (Trumpet) plays a similar melodic line. Guitars support (Electric guitar) play a complex rhythmic pattern with eighth notes and slurs. Track 3 (Bass) plays a steady eighth-note pattern. Strings support (Violin) plays a melodic line with slurs. Track 2 (Cello) and Track 6 (Double Bass) play a steady eighth-note pattern.

14 3

Track 1

Track 7 & 8

Track 4

Track 5

Guitars support

Track 3

Strings support

Track 2

Track 6



17

Track 1

Track 7 & 8

Track 4

Track 5

Guitars support

Track 3

Strings support

Track 2

Track 6

20

Track 1 part 2

Track 1

Track 7 & 8

Track 4

Track 5

Guitars support

Track 3

Strings support

Track 2

Track 6

Detailed description: This block contains the musical score for measures 20, 21, and 22. It features eight tracks. Track 1 part 2 (treble clef) has a melodic line starting with a quarter rest, followed by a quarter note G4, a half note A4, and a quarter note B4. Track 1 (bass clef) has a quarter note G2, a quarter rest, and a quarter note G2. Track 7 & 8 (soprano clef) has a complex rhythmic pattern with many sixteenth notes and rests. Track 4 (treble clef) has a rhythmic pattern of eighth notes with slurs. Track 5 (treble clef) has a rhythmic pattern of eighth notes with slurs. Guitars support (treble clef) has a rhythmic pattern of eighth notes with slurs. Track 3 (bass clef) has a rhythmic pattern of eighth notes. Strings support (treble clef) has a melodic line with a slur over the first two measures. Track 2 (bass clef) has a rhythmic pattern of eighth notes with slurs. Track 6 (bass clef) has a rhythmic pattern of eighth notes with slurs.



23

Track 1 part 2

Track 7 & 8

Track 4

Track 5

Guitars support

Track 3

Strings support

Track 2

Track 6

Detailed description: This block contains the musical score for measures 23, 24, and 25. It features eight tracks. Track 1 part 2 (treble clef) has a melodic line with a slur over the first two measures. Track 7 & 8 (soprano clef) has a complex rhythmic pattern with many sixteenth notes and rests. Track 4 (treble clef) has a rhythmic pattern of eighth notes with slurs. Track 5 (treble clef) has a rhythmic pattern of eighth notes with slurs. Guitars support (treble clef) has a rhythmic pattern of eighth notes with slurs. Track 3 (bass clef) has a rhythmic pattern of eighth notes. Strings support (treble clef) has a melodic line with a slur over the first two measures. Track 2 (bass clef) has a rhythmic pattern of eighth notes with slurs. Track 6 (bass clef) has a rhythmic pattern of eighth notes with slurs.

26

Track 1 part 2

Track 7 & 8

Track 4

Track 5

Guitars support

Track 3

Strings support

Track 2

Track 6



29

Track 1 part 2

Track 7 & 8

Track 4

Track 5

Guitars support

Track 3

Strings support

Track 2

Track 6

32

Track 1 part 2

Track 7 & 8

Track 4

Track 5

Guitars support

Track 3

Strings support

Track 2

Track 4 Intro & Track 1 Strings

Track 6



35

Track 1 part 2

Track 7 & 8

Track 4

Track 5

Guitars support

Track 3

Strings support

Track 2

Track 4 Intro & Track 1 Strings

Track 6

38

Musical score for tracks 2 through 8, measures 38 to 40. The score is arranged in a multi-stem format. Track 7 & 8 (drums) is at the top with a double bar line and a key signature of one sharp. Tracks 4, 5, and Guitars support are in the middle, all in treble clef with a key signature of one sharp. Track 3 (bass) is in bass clef with a key signature of one sharp. Tracks 2, Track 4 Intro & Track 1 Strings, and Track 6 are at the bottom, all in bass clef with a key signature of one sharp. The notation includes various rhythmic patterns, including eighth and sixteenth notes, and rests.



41

Musical score for tracks 2 through 8, measures 41 to 43. The score continues from the previous page. Track 7 & 8 (drums) is at the top with a double bar line and a key signature of one sharp. Tracks 4, 5, and Guitars support are in the middle, all in treble clef with a key signature of one sharp. Track 3 (bass) is in bass clef with a key signature of one sharp. Tracks 2, Track 4 Intro & Track 1 Strings, and Track 6 are at the bottom, all in bass clef with a key signature of one sharp. The notation includes various rhythmic patterns, including eighth and sixteenth notes, and rests.

44

Track 7 & 8

Track 4

Track 5

Guitars support

Track 3

Strings support

Track 2

Track 4 Intro & Track 1 Strings

Track 6



47

Track 7 & 8

Track 4

Track 5

Guitars support

Track 3

Strings support

Track 2

Track 4 Intro & Track 1 Strings

Track 6

50

Track 7 & 8

Track 4

Track 5

Guitars support

Track 3

Strings support

Track 2

Track 4 Intro & Track 1 Strings

Track 6



53

Track 1

Track 7 & 8

Track 4

Track 5

Guitars support

Track 3

Strings support

Track 2

Track 5 Intro

Track 6

56

Track 1

Track 7 & 8

Track 4

Track 5

Guitars support

Track 3

Strings support

Track 2

Track 6



59

Track 1

Track 7 & 8

Track 4

Track 5

Guitars support

Track 3

Strings support

Track 2

Track 6

62 11

Track 1

Track 7 & 8

Track 4

Track 5

Guitars support

Track 3

Strings support

Track 2

Track 6



65

Track 1

Track 7 & 8

Track 4

Track 5

Guitars support

Track 3

Strings support

Track 2

Track 6

68

Track 1 part 2

Track 1

Track 7 & 8

Track 4

Track 5

Guitars support

Track 3

Strings support

Track 2

Track 6

Detailed description: This block contains the musical score for measures 68-70. It features eight staves. Track 1 part 2 (treble clef) has a melodic line with a long note in measure 69. Track 1 (bass clef) has a simple bass line. Track 7 & 8 (percussion clef) shows a complex rhythmic pattern with many notes. Track 4 (treble clef) has a rhythmic accompaniment. Track 5 (treble clef) has a rhythmic accompaniment. Guitars support (treble clef) has a rhythmic accompaniment. Track 3 (bass clef) has a rhythmic accompaniment. Strings support (treble clef) has a melodic line with long notes. Track 2 (bass clef) has a simple bass line. Track 6 (bass clef) has a simple bass line. The key signature has one sharp (F#).



71

Track 1 part 2

Track 7 & 8

Track 4

Track 5

Guitars support

Track 3

Strings support

Track 2

Track 6

Detailed description: This block contains the musical score for measures 71-73. It features eight staves. Track 1 part 2 (treble clef) has a melodic line with a long note in measure 71. Track 7 & 8 (percussion clef) shows a complex rhythmic pattern with many notes. Track 4 (treble clef) has a rhythmic accompaniment. Track 5 (treble clef) has a rhythmic accompaniment. Guitars support (treble clef) has a rhythmic accompaniment. Track 3 (bass clef) has a rhythmic accompaniment. Strings support (treble clef) has a melodic line with long notes. Track 2 (bass clef) has a simple bass line. Track 6 (bass clef) has a simple bass line. The key signature has one sharp (F#).

74

Track 1 part 2

Track 7 & 8

Track 4

Track 5

Guitars support

Track 3

Strings support

Track 2

Track 6



77

Track 1 part 2

Track 7 & 8

Track 4

Track 5

Guitars support

Track 3

Strings support

Track 2

Track 6

80

Track 1 part 2

Track 7 & 8

Track 4

Track 5

Guitars support

Track 3

Strings support

Track 2

Track 6



83

Track 1 part 2

Track 7 & 8

Track 4

Track 5

Guitars support

Track 3

Strings support

Track 2

Track 4 Intro & Track 1 Strings

Track 6

86

Track 7 & 8

Track 4

Track 5

Guitars support

Track 3

Strings support

Track 2

Track 4 Intro & Track 1 Strings

Track 6



89

Track 7 & 8

Track 4

Track 5

Guitars support

Track 3

Strings support

Track 2

Track 4 Intro & Track 1 Strings

Track 6

92

Track 7 & 8

Track 4

Track 5

Guitars support

Track 3

Strings support

Track 2

Track 4 Intro & Track 1 Strings

Track 6



95

Track 7 & 8

Track 4

Track 5

Guitars support

Track 3

Strings support

Track 2

Track 4 Intro & Track 1 Strings

Track 6

98

Track 7 & 8



Track 4



Track 5



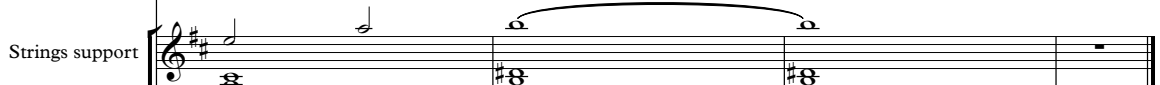
Guitars support



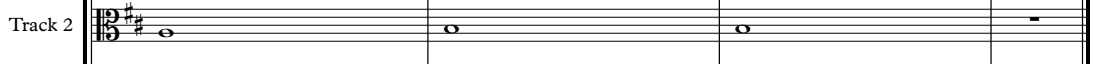
Track 3



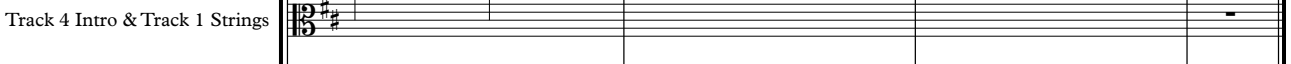
Strings support



Track 2



Track 4 Intro & Track 1 Strings



Track 6



Track 1 part 2

Luf2 - Boss Battle

♩ = 175,000076

19

24

30

36

31

72

78

82

17

Track 1

Luf2 - Boss Battle

♩ = 175,000076

4

9

13

18

32

53

57

61

65

33

Luf2 - Boss Battle

Track 7 & 8

♩ = 175,000076

4

8

12

16

20

24

28

32

35

V.S.

39

43

47

51

55

59

63

67

71

75

79

83

87

91

95

98

Track 4

Luf2 - Boss Battle

♩ = 175,000076

4

7

9

11

14

16

18

21

23

25

V.S.

27



29



31



33



35



37



39



41



43



45



47

69

71

73

75

77

79

81

83

85

87

Track 5

Luf2 - Boss Battle

$\text{♩} = 175,000076$

4

7

9

11

14

17

19

22

25

27

V.S.

29

31

33

35

37

39

41

43

45

47

49

51

53

55

57

59

62

65

67

70

V.S.

73



75



77



79



81



83



85



87



89



91



93



95



97



99



Guitars support Luf2 - Boss Battle

♩ = 175,000076

4

7

9

11

13

15

17

19

22

24

V.S.

26

46

48

50

53

55

57

59

61

63

65

V.S.

67



70



72



74



76



78



80



82



84



86



88



90



92



94



96



98



100



Track 3

Luf2 - Boss Battle

♩ = 175,000076



5



9



13



17



21



25



29



33



38



V.S.

42



46



50



54



58



62



66



70



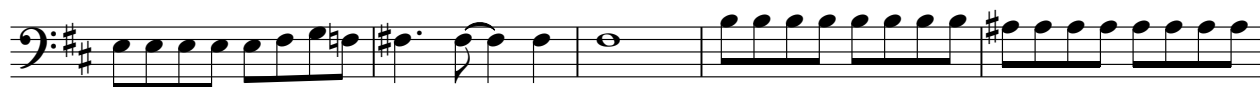
74



78



82



87



91



95



98



Luf2 - Boss Battle

Strings support

♩ = 175,000076

6

10

14

18

23

29

35

41

46

V.S.

52

56

60

64

68

73

79

85

90

95

Track 2

Luf2 - Boss Battle

♩ = 175,000076

7

11

15

19

25

31

38

46

54

V.S.

58



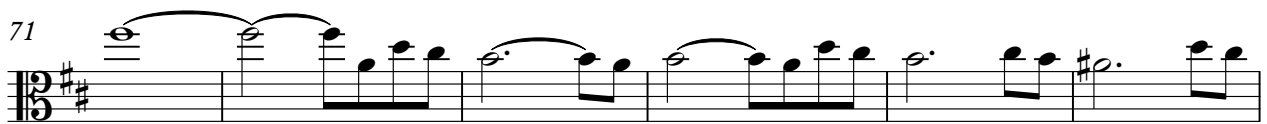
62



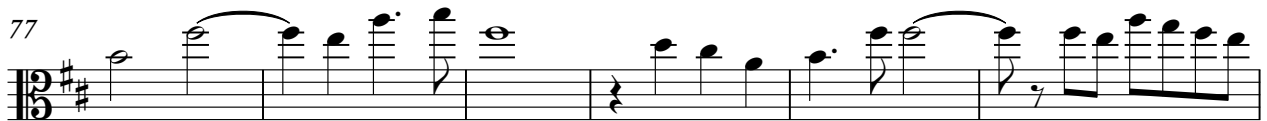
66



71



77



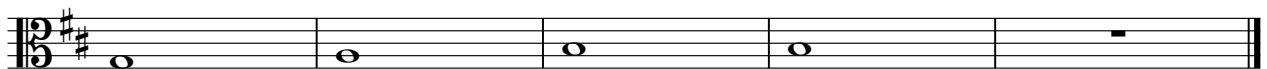
83



92



97



Luf2 - Boss Battle
Track 4 Intro & Track 1 Strings

♩ = 175,000076

29 2

37

42

48

32

85

90

95

Track 5 Intro

Luf2 - Boss Battle

♩ = 175,000076



5

48

49



Track 6

Luf2 - Boss Battle

$\text{♩} = 175,000076$

7

11

15

19

25

32

40

48

55

V.S.

59



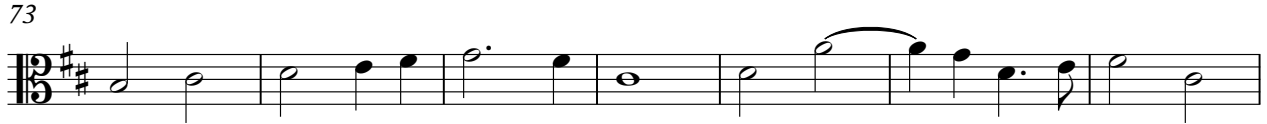
63



67



73



80



88



95

