

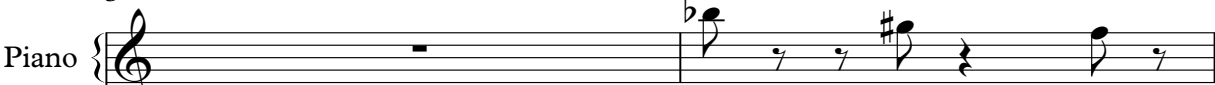
maneela - I'm Falling Dj w0n remix by cloudburst

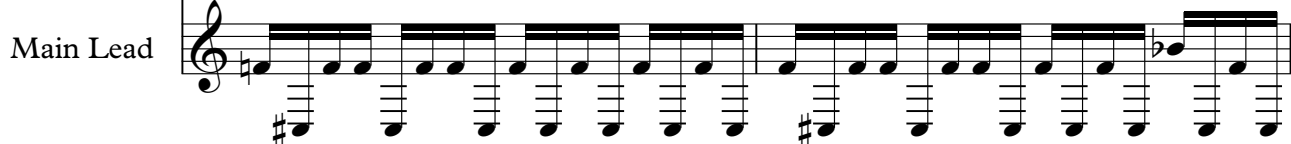
♩ = 140,000137

Piano { 

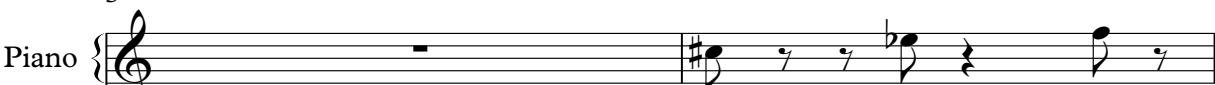
Main Lead 


3

Piano { 


Main Lead 


5

Piano { 

Main Lead 

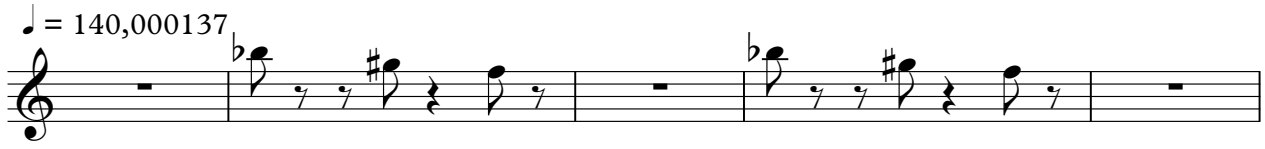
7

Piano { 

Main Lead 

Piano

maneela - I`m Falling Dj w0n remix by cloudburst



Main Lead

maneela - I`m Falling Dj w0n remix by cloudburst

♩ = 140,000137

The first line of musical notation consists of two measures. The first measure contains a treble clef, a key signature of one sharp (F#), and a series of eighth notes on the staff. Below the staff, there are two bass clefs, each with a flat sign (Bb) and a series of eighth notes. The second measure continues the eighth-note pattern in the treble clef and has a sharp sign (#) above the staff. It also features two bass clefs with eighth notes. The line ends with a double bar line.

3

The second line of musical notation consists of two measures, starting with a measure number '3' above the staff. The notation follows the same structure as the first line, with eighth notes in the treble clef and bass clefs below. The key signature changes to one flat (Bb) in the second measure, indicated by a flat sign (Bb) above the staff. The line ends with a double bar line.

5

The third line of musical notation consists of two measures, starting with a measure number '5' above the staff. The notation continues with eighth notes in the treble clef and bass clefs. The key signature changes to one sharp (F#) in the second measure, indicated by a sharp sign (#) above the staff. The line ends with a double bar line.

7

The fourth line of musical notation consists of two measures, starting with a measure number '7' above the staff. The notation continues with eighth notes in the treble clef and bass clefs. The key signature changes to one flat (Bb) in the second measure, indicated by a flat sign (Bb) above the staff. The line ends with a double bar line.