

# Margareth Menezes - Dandalunda 2

♩ = 150,000000

Track 10

5

Track 10

Track 11

Track 5

Track 3

Track 2

Track 2

7

Track 10

Track 5

Track 3

Track 2

Track 2

9

Track 10

Track 5

Track 3

Track 2

Track 2

11

Track 10

Track 3

Track 2

Track 2

13

Track 10

Track 3

Track 2

Track 2

Detailed description: This block shows the first system of a musical score starting at measure 13. It consists of four staves. Track 10 (top) is a guitar track with a treble clef and a capo on the second fret, featuring a rhythmic pattern of eighth notes with 'x' marks above them. Track 3 is a piano accompaniment in treble clef with a 7/8 time signature, playing chords and single notes. Track 2 (middle) is a piano accompaniment in treble clef with a 7/8 time signature, playing a melodic line. Track 2 (bottom) is a piano accompaniment in bass clef with a 7/8 time signature, playing a bass line.

15

Track 10

Track 11

Track 3

Track 2

Track 2

Detailed description: This block shows the second system of a musical score starting at measure 15. It consists of five staves. Track 10 (top) is a guitar track with a treble clef and a capo on the second fret, continuing the rhythmic pattern from the previous system. Track 11 is a piano accompaniment in treble clef with a 7/8 time signature, mostly silent with a few notes at the end of the system. Track 3 is a piano accompaniment in treble clef with a 7/8 time signature, playing chords and single notes. Track 2 (middle) is a piano accompaniment in treble clef with a 7/8 time signature, playing a melodic line. Track 2 (bottom) is a piano accompaniment in bass clef with a 7/8 time signature, playing a bass line.

17

Track 10

Track 11

Track 5

Track 3

Track 2

Track 2

19

Track 10

Track 3

Track 2

Track 2

21

Track 10

Track 3

Track 2

Track 2

23

Track 10: Treble clef, guitar tablature with fret numbers and rhythmic notation.

Track 11: Treble clef, mostly rests with some notes in the second measure.

Track 3: Treble clef, chordal accompaniment with rhythmic notation.

Track 2 (top): Treble clef, melodic line.

Track 2 (bottom): Bass clef, bass line.

25

Track 10: Treble clef, guitar tablature with a long slur over the second measure.

Track 5: Treble clef, melodic line.

Track 3: Treble clef, chordal accompaniment with long slurs.

Track 2 (top): Treble clef, melodic line with long slurs.

Track 2 (bottom): Bass clef, bass line with long slurs.

27

Track 10

Track 5

Track 3

Track 2

Track 2

29

Track 10

Track 3

Track 2

Track 2

31

Track 10

Track 3

Track 2

Track 2

33

Track 10

Track 3

Track 2

Track 2

35

Track 10

Track 5

Track 3

Track 2

Track 2

37

Track 10

Track 5

Track 3

Track 2

Track 2

39

Track 10

Track 3

Track 2

Track 2

41

Track 10

Track 3

Track 2

Track 2

43

Track 10

Track 11

Track 3

Track 2

Track 2



45

Track 10

Track 11

Track 5

Track 3

Track 2

Track 2

47

Track 10

Track 3

Track 2

Track 2

49

Track 10

Track 3

Track 2

Track 2

51

Track 10

Track 3

Track 2

Track 2

53

Track 10

Track 5

Track 3

Track 2

Track 2

55

Track 10

Track 5

Track 3

Track 2

Track 2

57

Track 10

Track 3

Track 2

Track 2

59

Track 10

Track 3

Track 2

Track 2

61

Track 10

Track 3

Track 2

Track 2

63

Track 10

Track 5

Track 3

Track 2

Track 2

65

Track 10

Track 5

Track 3

Track 2

Track 2

67

Track 10

Track 11

Track 3

Track 2

Track 2

69

Track 10

Track 11

Track 3

Track 2

Track 2

71

Track 10

Track 11

Track 3

Track 2

Track 2

This musical score block covers measures 71 to 72. It features five tracks: Track 10 (Guitar), Track 11 (Piano), Track 3 (Strings), and two Track 2 staves (Vocal). Track 10 shows a complex guitar line with many accidentals and slurs. Track 11 has a few piano notes. Track 3 consists of string chords and rests. The two Track 2 staves have vocal lines with notes and rests.

73

Track 10

Track 5

Track 3

Track 2

Track 2

This musical score block covers measures 73 to 74. It features five tracks: Track 10 (Guitar), Track 5 (Piano), Track 3 (Strings), and two Track 2 staves (Vocal). Track 10 continues the guitar line with more complex patterns. Track 5 has a piano line with eighth notes. Track 3 has long, sustained string notes. The two Track 2 staves have vocal lines with notes and rests.

75

Track 10

Track 5

Track 3

Track 2

Track 2

77

Track 10

Track 3

Track 2

Track 2

79

Track 10

Track 3

Track 2

Track 2

81

Track 10

Track 3

Track 2

Track 2

83

Track 10

Track 5

Track 3

Track 2

Track 2

85

Track 10

Track 5

Track 3

Track 2

Track 2



87

Track 10

Track 3

Track 2

Track 2

89

Track 10

Track 3

Track 2

Track 2

91

Track 10

Track 11

Track 3

Track 2

Track 2

93

Track 10

Track 11

Track 5

Track 3

Track 2

Track 2

95

Track 10

Track 3

Track 2

Track 2

97

Track 10

Track 3

Track 2

Track 2

99

Track 10

Track 3

Track 2

Track 2

101

Track 10

Track 5

Track 3

Track 2

Track 2

103

Track 10

Track 5

Track 3

Track 2

Track 2

105

Track 10

Track 3

Track 2

Track 2

107

Track 10

Track 3

Track 2

Track 2

109

Track 10

Track 3

Track 2

Track 2

111

Track 10

Track 5

Track 3

Track 2

Track 2

113

Track 10

Track 3

Track 2

Track 2

115

Track 10

Track 5

Track 3

Track 2

Track 2

117

Track 10

Track 3

Track 2

Track 2

119

Track 10

Track 3

120

Track 10

Track 11

Track 3

Track 2

Track 2

Margareth Menezes - Dandalunda 2

Track 10

♩ = 150,000000

5

8

11

14

17

20

23

26

29

V.S.

32

35

38

41

44

47

50

53

56

59



62

65

67

69

71

74

77

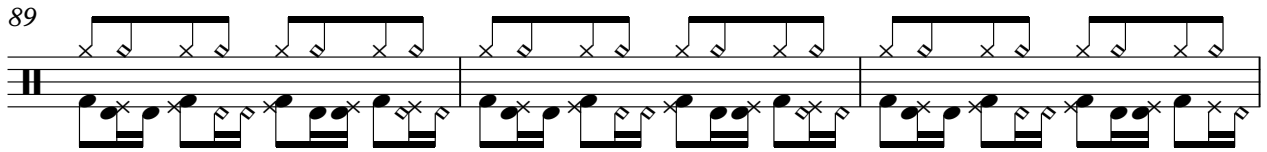
80

83

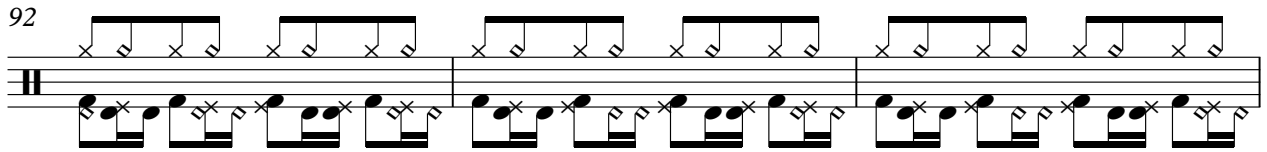
86

V.S.

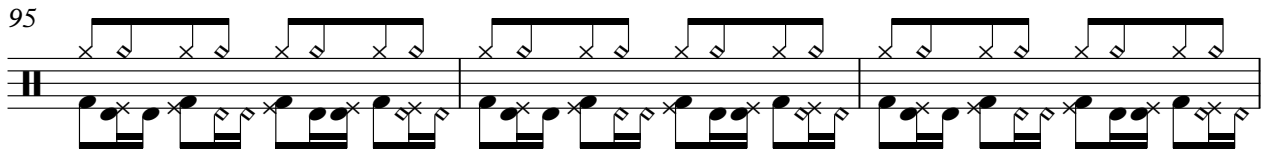
89



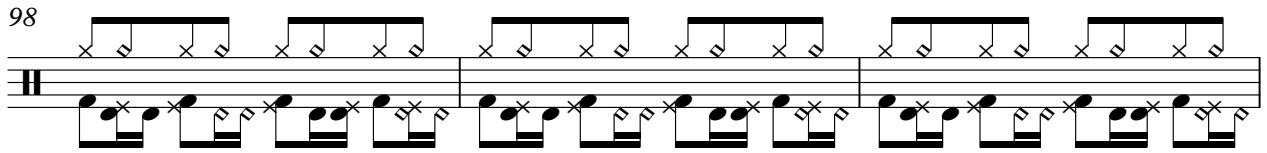
92



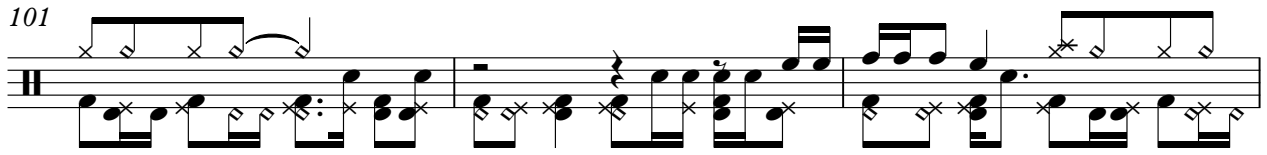
95



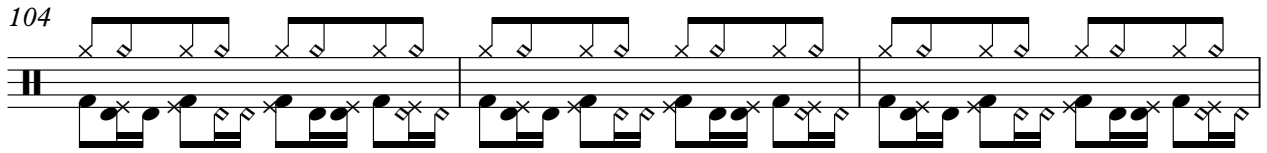
98



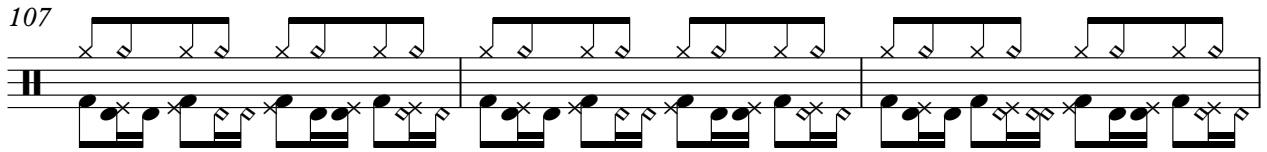
101



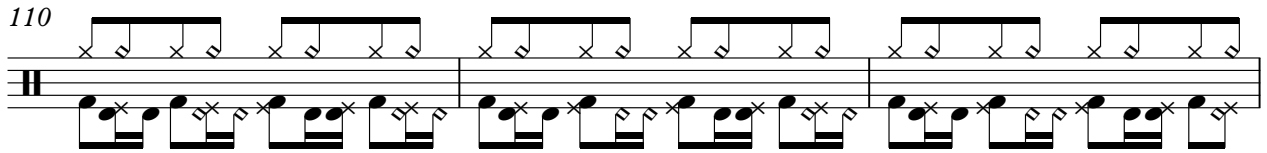
104



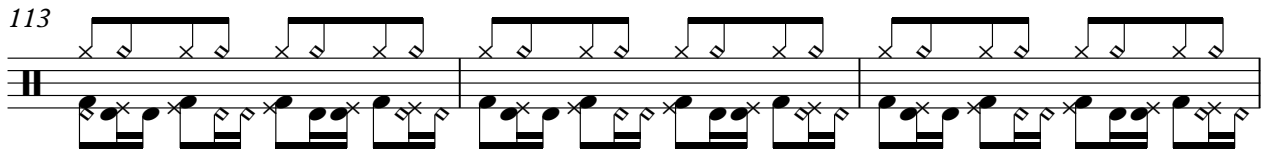
107



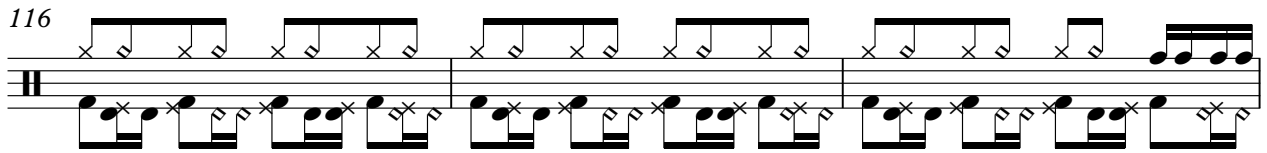
110



113



116



119

Track 11

Margareth Menezes - Dandalunda 2

♩ = 150,000000

5 9

18 6 19

45 21

70 20

93 27

Margareth Menezes - Dandalunda 2

Track 5

♩ = 150,000000

5

10

25

35

45

54

64

74

84

93

2

Track 5

101



7

Detailed description: This musical staff shows measure 101. It begins with a whole rest. The second measure contains a sixteenth-note triplet of G4, A4, and B4. The third measure contains an eighth-note triplet of G4, A4, and B4. The fourth measure contains a quarter-note triplet of G4, A4, and B4. The fifth measure contains a half-note triplet of G4, A4, and B4. The sixth measure contains a whole-note triplet of G4, A4, and B4. The seventh measure contains a whole rest. The eighth measure is a whole bar with a thick black line across it, indicating a barre, with the number 7 written above it.

111



2

Detailed description: This musical staff shows measure 111. It begins with a whole rest. The second measure contains a dotted quarter note G4. The third measure contains an eighth note G4. The fourth measure contains a quarter rest. The fifth measure contains an eighth note G4. The sixth measure contains a quarter note G4. The seventh measure contains a whole note G4. The eighth measure is a whole bar with a thick black line across it, indicating a barre, with the number 2 written above it.

115



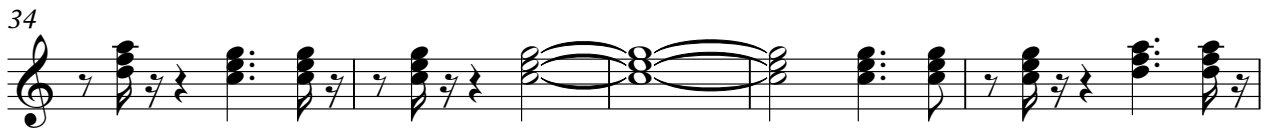
5

Detailed description: This musical staff shows measure 115. It begins with a whole rest. The second measure contains a dotted quarter note G4. The third measure contains an eighth note G4. The fourth measure contains a quarter rest. The fifth measure contains an eighth note G4. The sixth measure contains a quarter note G4. The seventh measure contains a whole note G4. The eighth measure is a whole bar with a thick black line across it, indicating a barre, with the number 5 written above it.

Margareth Menezes - Dandalunda 2

Track 3

♩ = 150,000000



V.S.



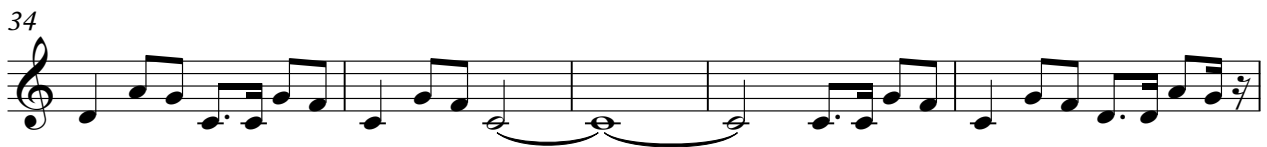




Margareth Menezes - Dandalunda 2

Track 2

♩ = 150,000000



V.S.

47



51



56



60



65



70



75



79



83



88



92



96



100



105



109



113



117



Margareth Menezes - Dandalunda 2

Track 2

♩ = 150,000000

5



9



13



17



21



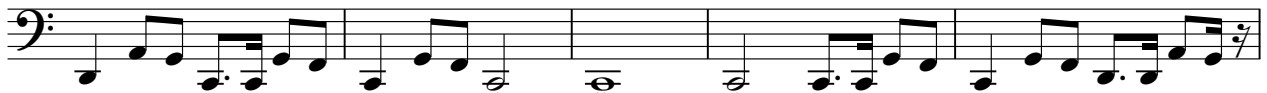
25



30



34



39



43



V.S.

47



51



56



60



65



70



75



79



83



88



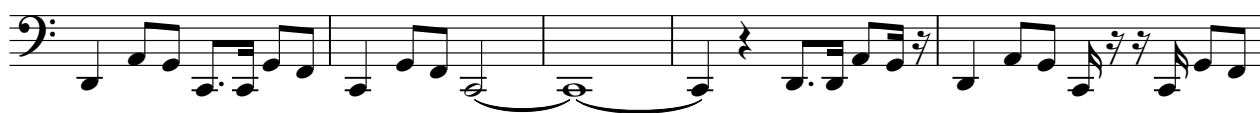
92



96



100



105



109



113



117

