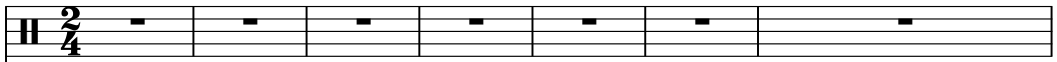
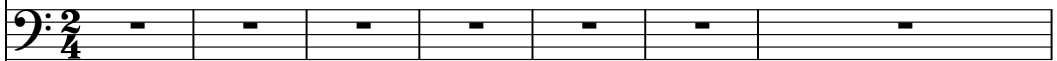




Mary Chappin Carpenter - I Feel Lucky

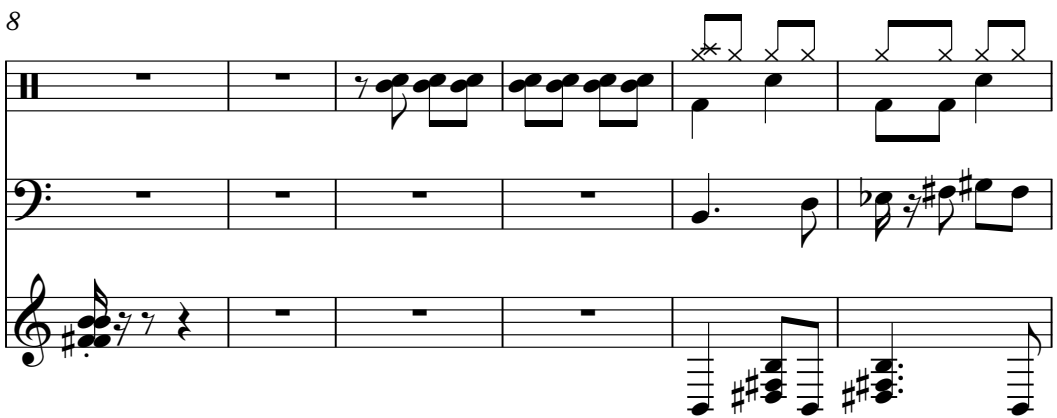
♩ = 128,000000

DRUMS 

FINGERDBAS 

ORCH.HIT 

A.PIANO 1 

8 

14 

18

DRUMS

FINGERDBAS

A.PIANO 1

22

DRUMS

FINGERDBAS

A.PIANO 1

27

DRUMS

FINGERDBAS

A.PIANO 1

31

DRUMS

FINGERDBAS

A.PIANO 1

The image displays a musical score for three instruments: Drums, Fingerbass, and A. Piano 1. The score is organized into four systems, each starting with a measure number (18, 22, 27, and 31). Each system contains three staves. The top staff is for Drums, the middle for Fingerbass, and the bottom for A. Piano 1. The Drums part features a consistent rhythmic pattern of eighth notes with 'x' marks above them, indicating a specific drum sound. The Fingerbass part is written in bass clef and consists of eighth and quarter notes with various accidentals. The A. Piano 1 part is written in treble clef and features complex chordal textures with many beamed notes and accidentals.

35

DRUMS

FINGERDBAS

A.PIANO 1

39

DRUMS

FINGERDBAS

A.PIANO 1

44

DRUMS

FINGERDBAS

A.PIANO 1

49

DRUMS

FINGERDBAS

A.PIANO 1

53

DRUMS

FINGERDBAS

A.PIANO 1

57

DRUMS

FINGERDBAS

A.PIANO 1

63

DRUMS

FINGERDBAS

A.PIANO 1

67

DRUMS

FINGERDBAS

A.PIANO 1

71

DRUMS

FINGERDBAS

A.PIANO 1

This system contains measures 71 through 74. The Drums part features a consistent pattern of eighth notes with 'x' marks above them, indicating a specific drum sound. The Fingerdbas part consists of a bass line with eighth and quarter notes, including some rests. The A.PIANO 1 part features a complex texture with many beamed notes and chords, including some triplets.

75

DRUMS

FINGERDBAS

A.PIANO 1

This system contains measures 75 through 78. The Drums part continues with the same eighth-note pattern. The Fingerdbas part has a more active bass line with eighth notes and some rests. The A.PIANO 1 part continues with complex chordal textures and beamed notes.

79

DRUMS

FINGERDBAS

A.PIANO 1

This system contains measures 79 through 82. The Drums part remains consistent. The Fingerdbas part shows a change in the bass line pattern. The A.PIANO 1 part continues with its complex, multi-note texture.

83

DRUMS

FINGERDBAS

A.PIANO 1

This system contains measures 83 through 86. The Drums part continues with the eighth-note pattern. The Fingerdbas part has a more active bass line with eighth notes and rests. The A.PIANO 1 part continues with its complex, multi-note texture.

87

DRUMS

FINGERDBAS

A.PIANO 1

93

DRUMS

FINGERDBAS

A.PIANO 1

97

DRUMS

FINGERDBAS

A.PIANO 1

101

DRUMS

FINGERDBAS

A.PIANO 1

106

DRUMS

FINGERDBAS

A.PIANO 1

112

DRUMS

FINGERDBAS

A.PIANO 1

117

DRUMS

FINGERDBAS

A.PIANO 1

122

DRUMS

FINGERDBAS

A.PIANO 1

126

DRUMS

FINGERDBAS

This system covers measures 126 to 129. The Drums part features a consistent rhythmic pattern of eighth notes with 'x' marks above them, indicating cymbal hits. The Fingerbass part is mostly silent, with a few notes in measures 127 and 128.

130

DRUMS

FINGERDBAS

This system covers measures 130 to 133. The Drums part continues with the eighth-note pattern. The Fingerbass part has a few notes in measures 131 and 132, including a sharp sign.

134

DRUMS

FINGERDBAS

This system covers measures 134 to 137. The Drums part continues with the eighth-note pattern. The Fingerbass part has a few notes in measures 135 and 136.

138

DRUMS

FINGERDBAS

ORCH.HIT

This system covers measures 138 to 141. The Drums part continues with the eighth-note pattern. The Fingerbass part has a few notes in measures 139 and 140. The Orchestral Hit part has a few notes in measures 139 and 140.

142

DRUMS

FINGERDBAS

ORCH.HIT

This system covers measures 142 to 145. The Drums part continues with the eighth-note pattern. The Fingerbass part has a few notes in measures 142 and 143. The Orchestral Hit part has a few notes in measures 142 and 143.

146

DRUMS

FINGERDBAS

A.PIANO 1

151

DRUMS

FINGERDBAS

A.PIANO 1

156

DRUMS

FINGERDBAS

A.PIANO 1

161

DRUMS

FINGERDBAS

A.PIANO 1

166

DRUMS

FINGERDBAS

A.PIANO 1

171

DRUMS

FINGERDBAS

A.PIANO 1

175

DRUMS

FINGERDBAS

A.PIANO 1

181

DRUMS

FINGERDBAS

186

DRUMS

FINGERDBAS

The image displays a musical score for three instruments: Drums, Fingerbass, and A. Piano 1. The score is organized into measures, with measure numbers 166, 171, 175, 181, and 186 clearly marked. Each measure group consists of three staves: Drums (top), Fingerbass (middle), and A. Piano 1 (bottom). The Drums staff uses a drum set notation with 'x' marks for cymbals and vertical lines for other drums. The Fingerbass staff is in bass clef, and the A. Piano 1 staff is in treble clef. The music features complex rhythmic patterns, including triplets and syncopation. There are several instances of musical notation that has been heavily obscured by blacked-out text, likely due to scanning artifacts or intentional redaction. These obscured sections appear to contain performance instructions or technical details. The overall style is that of a professional music manuscript.

DRUMS

Mary Chappin Carpenter - I Feel Lucky

♩ = 128,000000

9

16

24

32

40

49

57

65

73

81

V.S.

DRUMS

89

Musical notation for drum set at measure 89. The staff shows a sequence of notes and rests, including a double bar line and a key signature change to one flat.

97

Musical notation for drum set at measure 97. The staff shows a sequence of notes and rests, including a double bar line.

105

Musical notation for drum set at measure 105. The staff shows a sequence of notes and rests, including a double bar line and a key signature change to one flat.

113

Musical notation for drum set at measure 113. The staff shows a sequence of notes and rests, including a double bar line.

120

Musical notation for drum set at measure 120. The staff shows a sequence of notes and rests, including a double bar line.

126

Musical notation for drum set at measure 126. The staff shows a sequence of notes and rests, including a double bar line.

130

Musical notation for drum set at measure 130. The staff shows a sequence of notes and rests, including a double bar line.

134

Musical notation for drum set at measure 134. The staff shows a sequence of notes and rests, including a double bar line.

139

Musical notation for drum set at measure 139. The staff shows a sequence of notes and rests, including a double bar line.

145

Musical notation for drum set at measure 145. The staff shows a sequence of notes and rests, including a double bar line.

DRUMS

151

159

166

174

182

♩ = 128,000000

11



18



25



33



40

3



49



54

3

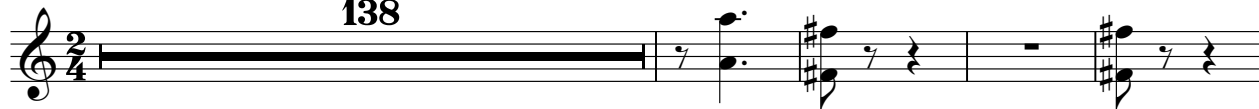


146



♩ = 128,000000

138




143

35



183

2



Mary Chappin Carpenter - I Feel Lucky

A.PIANO 1

♩ = 128,000000

6 3

14

22

30

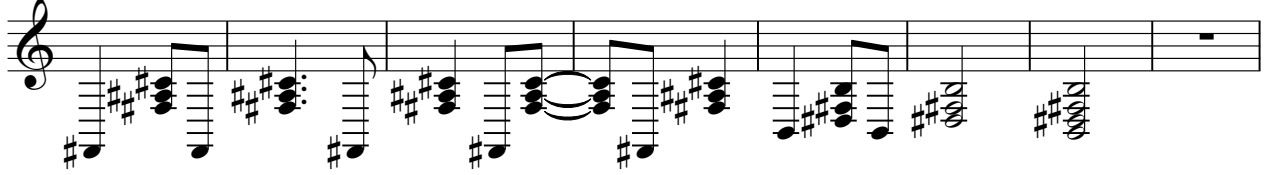
36 3 3

45 3

53 3 3

Musical score for A.PIANO 1, measures 60-148. The score is written in treble clef with a key signature of two sharps (F# and C#). The music consists of a single melodic line with various rhythmic patterns, including eighth and sixteenth notes, and rests. Measure numbers are indicated at the beginning of each line: 60, 68, 75, 82, 88, 97, 104, 114, 120, and 148. There are three triplet markings (indicated by a '3' above a bracket) at measures 88, 104, and 114. A double bar line with a repeat sign is present at measure 120, with the number '23' written below it. The notation includes various accidentals (sharps and naturals) and dynamic markings.

156



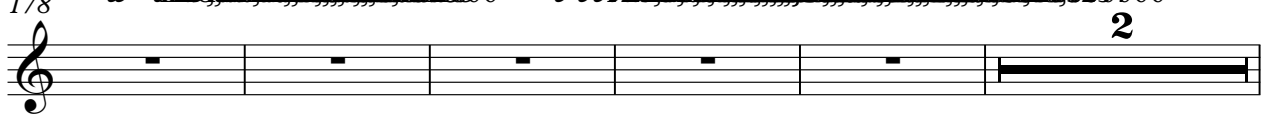
164



171



178



185

