

# Memphis Slim - Cow Cow Blues

♩ = 128,000000

Percussion

Upright Bass

Solo

Solo

Birdsong

3

U. Bass

Solo

5

Perc.

U. Bass

Solo

Solo

7

Perc.

U. Bass

Solo

Solo

9

Perc.

U. Bass

Solo

Solo

11

Perc.

U. Bass

Solo

Solo

13

Perc.

U. Bass

Solo

Solo

15

Perc.

U. Bass

Solo

Solo

17

Perc.

U. Bass

Solo

Solo

18

Perc.

U. Bass

Solo

Solo

20

Perc.

U. Bass

Solo

Solo

21

Perc.


U. Bass


Solo


Solo

22

Perc. 

U. Bass 

Solo 

Solo 

24

Perc. 

U. Bass 

Solo 

Solo 

26

Perc. 

U. Bass 

Solo 

Solo 

28

Perc.

U. Bass

Solo

Solo

30

Perc.

U. Bass

Solo

Solo

32

Perc.

U. Bass

Solo

Solo

[illegible]

35

Perc.

U. Bass

Solo

Solo

3

3

3

3

3

3

6

6

37

Perc.

U. Bass

Solo

Solo

3

3

3

3

3

6

3

38

Perc.

U. Bass

Solo

Solo

Measures 38-39. Percussion: eighth notes with accents. U. Bass: eighth notes with triplets. Solo: eighth notes with triplets and sixteenth-note runs.

40

Perc.

U. Bass

Solo

Solo

Measures 40-41. Percussion: eighth notes with accents. U. Bass: eighth notes with triplets. Solo: eighth notes with triplets and sixteenth-note runs.

42

Perc.

U. Bass

Solo

Solo

Measures 42-43. Percussion: eighth notes with accents. U. Bass: long note. Solo: eighth notes with triplets and sixteenth-note runs.



44

Perc. 

U. Bass 

Solo 

Solo 

46

Perc. 

U. Bass 

Solo 

Solo 

48

Perc. 

U. Bass 

Solo 

Solo 

50

Perc.

U. Bass

Solo

Solo

50

51

51

Perc.

U. Bass

Solo

Solo

51

52

53

Perc.

U. Bass

Solo

Solo

53

54

54 11

Perc. 

U. Bass 

Solo 

Solo 

56

Perc. 

U. Bass 

Solo 

Solo 

58

Perc. 

U. Bass 

Solo 

Solo 

59

Perc.

U. Bass

Solo

Solo

61

Perc.

U. Bass

Solo

Solo

63

Perc.

U. Bass

Solo

Solo

65

Perc.

U. Bass

Solo

Solo

66

Perc.

U. Bass

Solo

Solo

68

Perc.

U. Bass

Solo

Solo

70

Perc.

U. Bass

Solo

Solo

3 3 3 3

72

Perc.

U. Bass

Solo

Solo

3 3 3 3

6 3 3

74

Perc.

U. Bass

Solo

Solo

3 3

75

Perc. 

U. Bass 

Solo 

Solo 

76

Perc. 

U. Bass 

Solo 

Solo 

78

Perc. 

Solo 

80

Perc. 

U. Bass 

Solo 

Solo 

82

Perc.

U. Bass

Solo

Solo

3 3 3 3 3 3 3 3

84

Perc.

U. Bass

Solo

Solo

3 3 3 3

85

Perc.

U. Bass

Solo

Solo

3 3 3 3



87

Perc.

U. Bass

Solo

Solo

88

88

Perc.

U. Bass

Solo

Solo

89

89

Perc.

U. Bass

Solo

Solo

90

91

Perc.

U. Bass

Solo

Solo

92

92

Perc.

U. Bass

Solo

Solo

93

94

Perc.

U. Bass

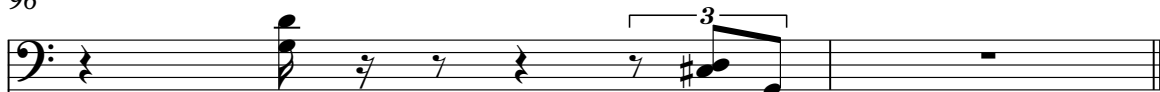
Solo

Solo

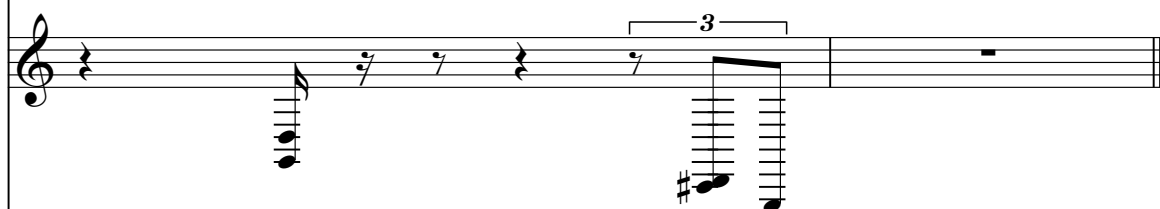
95

96

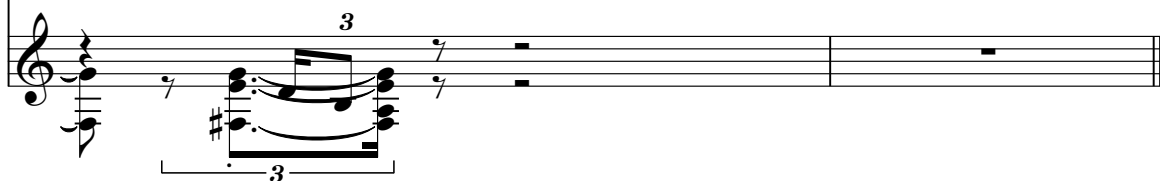
U. Bass



Solo



Solo



## Percussion

V.S.

44

48

52

56

60

64

68

72

76

80

84 Percussion 3

84 Percussion 3

85 Percussion 3

86 Percussion 3

87 Percussion 3

88 Percussion 3

88 Percussion 3

89 Percussion 3

90 Percussion 3

91 Percussion 3

92 Percussion 3

93 Percussion 3

# Memphis Slim - Cow Cow Blues

The bass line of 'The Rose Tree' is written in bass clef. It consists of 12 measures. The first measure has a treble clef and a key signature of one flat (B-flat). The melody is: G2 (quarter), A2 (quarter), Bb2 (quarter), A2 (quarter), G2 (quarter), F2 (quarter), E2 (quarter), D2 (half). The second measure has a treble clef and a key signature of one flat (B-flat). The melody is: D2 (quarter), C2 (quarter), Bb2 (quarter), A2 (quarter), G2 (quarter), F2 (quarter), E2 (quarter), D2 (half). The third measure has a treble clef and a key signature of one flat (B-flat). The melody is: D2 (quarter), C2 (quarter), Bb2 (quarter), A2 (quarter), G2 (quarter), F2 (quarter), E2 (quarter), D2 (half). The fourth measure has a treble clef and a key signature of one flat (B-flat). The melody is: D2 (quarter), C2 (quarter), Bb2 (quarter), A2 (quarter), G2 (quarter), F2 (quarter), E2 (quarter), D2 (half). The fifth measure has a treble clef and a key signature of one flat (B-flat). The melody is: D2 (quarter), C2 (quarter), Bb2 (quarter), A2 (quarter), G2 (quarter), F2 (quarter), E2 (quarter), D2 (half). The sixth measure has a treble clef and a key signature of one flat (B-flat). The melody is: D2 (quarter), C2 (quarter), Bb2 (quarter), A2 (quarter), G2 (quarter), F2 (quarter), E2 (quarter), D2 (half). The seventh measure has a treble clef and a key signature of one flat (B-flat). The melody is: D2 (quarter), C2 (quarter), Bb2 (quarter), A2 (quarter), G2 (quarter), F2 (quarter), E2 (quarter), D2 (half). The eighth measure has a treble clef and a key signature of one flat (B-flat). The melody is: D2 (quarter), C2 (quarter), Bb2 (quarter), A2 (quarter), G2 (quarter), F2 (quarter), E2 (quarter), D2 (half). The ninth measure has a treble clef and a key signature of one flat (B-flat). The melody is: D2 (quarter), C2 (quarter), Bb2 (quarter), A2 (quarter), G2 (quarter), F2 (quarter), E2 (quarter), D2 (half). The tenth measure has a treble clef and a key signature of one flat (B-flat). The melody is: D2 (quarter), C2 (quarter), Bb2 (quarter), A2 (quarter), G2 (quarter), F2 (quarter), E2 (quarter), D2 (half). The eleventh measure has a treble clef and a key signature of one flat (B-flat). The melody is: D2 (quarter), C2 (quarter), Bb2 (quarter), A2 (quarter), G2 (quarter), F2 (quarter), E2 (quarter), D2 (half). The twelfth measure has a treble clef and a key signature of one flat (B-flat). The melody is: D2 (quarter), C2 (quarter), Bb2 (quarter), A2 (quarter), G2 (quarter), F2 (quarter), E2 (quarter), D2 (half).

The bass line of 'The Rose Tree' is written in bass clef. It consists of four measures, each containing a triplet of eighth notes. The notes in the triplets are G2, A2, and B2. The first measure has a '3' below the notes. The second measure has a '3' below the notes. The third measure has a '3' below the notes. The fourth measure has a '3' below the notes.

The bass line of 'The Rose Tree' is written in bass clef. It consists of four measures, each containing a triplet of eighth notes. The notes in the triplets are G2, A2, and B2. The first measure has a quarter rest, the second has a quarter note, the third has a quarter note, and the fourth has a quarter note. The notes are beamed together, and the triplet '3' is written below each group.

Musical notation for Exercise 6, Bass Clef. The staff contains four measures of music. Each measure begins with a quarter rest followed by an eighth note. The notes are G2, A2, B2, C3, D3, E3, F3, G3, A3, B3, C4, D4, E4, F4, G4, A4, B4, C5, D5, E5, F5, G5, A5, B5, C6, D6, E6, F6, G6, A6, B6, C7, D7, E7, F7, G7, A7, B7, C8, D8, E8, F8, G8, A8, B8, C9, D9, E9, F9, G9, A9, B9, C10, D10, E10, F10, G10, A10, B10, C11, D11, E11, F11, G11, A11, B11, C12, D12, E12, F12, G12, A12, B12, C13, D13, E13, F13, G13, A13, B13, C14, D14, E14, F14, G14, A14, B14, C15, D15, E15, F15, G15, A15, B15, C16, D16, E16, F16, G16, A16, B16, C17, D17, E17, F17, G17, A17, B17, C18, D18, E18, F18, G18, A18, B18, C19, D19, E19, F19, G19, A19, B19, C20, D20, E20, F20, G20, A20, B20, C21, D21, E21, F21, G21, A21, B21, C22, D22, E22, F22, G22, A22, B22, C23, D23, E23, F23, G23, A23, B23, C24, D24, E24, F24, G24, A24, B24, C25, D25, E25, F25, G25, A25, B25, C26, D26, E26, F26, G26, A26, B26, C27, D27, E27, F27, G27, A27, B27, C28, D28, E28, F28, G28, A28, B28, C29, D29, E29, F29, G29, A29, B29, C30, D30, E30, F30, G30, A30, B30, C31, D31, E31, F31, G31, A31, B31, C32, D32, E32, F32, G32, A32, B32, C33, D33, E33, F33, G33, A33, B33, C34, D34, E34, F34, G34, A34, B34, C35, D35, E35, F35, G35, A35, B35, C36, D36, E36, F36, G36, A36, B36, C37, D37, E37, F37, G37, A37, B37, C38, D38, E38, F38, G38, A38, B38, C39, D39, E39, F39, G39, A39, B39, C40, D40, E40, F40, G40, A40, B40, C41, D41, E41, F41, G41, A41, B41, C42, D42, E42, F42, G42, A42, B42, C43, D43, E43, F43, G43, A43, B43, C44, D44, E44, F44, G44, A44, B44, C45, D45, E45, F45, G45, A45, B45, C46, D46, E46, F46, G46, A46, B46, C47, D47, E47, F47, G47, A47, B47, C48, D48, E48, F48, G48, A48, B48, C49, D49, E49, F49, G49, A49, B49, C50, D50, E50, F50, G50, A50, B50, C51, D51, E51, F51, G51, A51, B51, C52, D52, E52, F52, G52, A52, B52, C53, D53, E53, F53, G53, A53, B53, C54, D54, E54, F54, G54, A54, B54, C55, D55, E55, F55, G55, A55, B55, C56, D56, E56, F56, G56, A56, B56, C57, D57, E57, F57, G57, A57, B57, C58, D58, E58, F58, G58, A58, B58, C59, D59, E59, F59, G59, A59, B59, C60, D60, E60, F60, G60, A60, B60, C61, D61, E61, F61, G61, A61, B61, C62, D62, E62, F62, G62, A62, B62, C63, D63, E63, F63, G63, A63, B63, C64, D64, E64, F64, G64, A64, B64, C65, D65, E65, F65, G65, A65, B65, C66, D66, E66, F66, G66, A66, B66, C67, D67, E67, F67, G67, A67, B67, C68, D68, E68, F68, G68, A68, B68, C69, D69, E69, F69, G69, A69, B69, C70, D70, E70, F70, G70, A70, B70, C71, D71, E71, F71, G71, A71, B71, C72, D72, E72, F72, G72, A72, B72, C73, D73, E73, F73, G73, A73, B73, C74, D74, E74, F74, G74, A74, B74, C75, D75, E75, F75, G75, A75, B75, C76, D76, E76, F76, G76, A76, B76, C77, D77, E77, F77, G77, A77, B77, C78, D78, E78, F78, G78, A78, B78, C79, D79, E79, F79, G79, A79, B79, C80, D80, E80, F80, G80, A80, B80, C81, D81, E81, F81, G81, A81, B81, C82, D82, E82, F82, G82, A82, B82, C83, D83, E83, F83, G83, A83, B83, C84, D84, E84, F84, G84, A84, B84, C85, D85, E85, F85, G85, A85, B85, C86, D86, E86, F86, G86, A86, B86, C87, D87, E87, F87, G87, A87, B87, C88, D88, E88, F88, G88, A88, B88, C89, D89, E89, F89, G89, A89, B89, C90, D90, E90, F90, G90, A90, B90, C91, D91, E91, F91, G91, A91, B91, C92, D92, E92, F92, G92, A92, B92, C93, D93, E93, F93, G93, A93, B93, C94, D94, E94, F94, G94, A94, B94, C95, D95, E95, F95, G95, A95, B95, C96, D96, E96, F96, G96, A96, B96, C97, D97, E97, F97, G97, A97, B97, C98, D98, E98, F98, G98, A98, B98, C99, D99, E99, F99, G99, A99, B99, C100, D100, E100, F100, G100, A100, B100, C101, D101, E101, F101, G101, A101, B101, C102, D102, E102, F102, G102, A102, B102, C103, D103, E103, F103, G103, A103, B103, C104, D104, E104, F104, G104, A104, B104, C105, D105, E105, F105, G105, A105, B105, C106, D106, E106, F106, G106, A106, B106, C107, D107, E107, F107, G107, A107, B107, C108, D108, E108, F108, G108, A108, B108, C109, D109, E109, F109, G109, A109, B109, C110, D110, E110, F110, G110, A110, B110, C111, D111, E111, F111, G111, A111, B111, C112, D112, E112, F112, G112, A112, B112, C113, D113, E113, F113, G113, A113, B113, C114, D114, E114, F114, G114, A114, B114, C115, D115, E115, F115, G115, A115, B115, C116, D116, E116, F116, G116, A116, B116, C117, D117, E117, F117, G117, A117, B117, C118, D118, E118, F118, G118, A118, B118, C119, D119, E119, F119, G119, A119, B119, C120, D120, E120, F120, G120, A120, B120, C121, D121, E121, F121, G121, A121, B121, C122, D122, E122, F122, G122, A122, B122, C123, D123, E123, F123, G123, A123, B123, C124, D124, E124, F124, G124, A124, B124, C125, D125, E125, F125, G125, A125, B125, C126, D126, E126, F126, G126, A126, B126, C127, D127, E127, F127, G127, A127, B127, C128, D128, E128, F128, G128, A128, B128, C129, D129, E129, F129, G129, A129, B129, C130, D130, E130, F130, G130, A130, B130, C131, D131, E131, F131, G131, A131, B131, C132, D132, E132, F132, G132, A132, B132, C133, D133, E133, F133, G133, A133, B133, C134, D134, E134, F134, G134, A134, B134, C135, D135, E135, F135, G135, A135, B135, C136, D136, E136, F136, G136, A136, B136, C137, D137, E137, F137, G137, A137, B137, C138, D138, E138, F138, G138, A138, B138,

[illegible]

The bass line of 'The Rose Tree' is written in bass clef. It begins with a quarter note G2, followed by a quarter rest, then a quarter note F2, and another quarter rest. This is followed by a triplet of eighth notes: E2, D2, and C2. The pattern of a quarter note with a rest followed by a triplet of eighth notes (G2-F2-E2, F2-E2-D2, E2-D2-C2) is repeated. The melody then moves to a higher register with a quarter note G3, a quarter rest, a quarter note F3, and a quarter rest, followed by a triplet of eighth notes: E3, D3, and C3. The piece concludes with a final triplet of eighth notes: B2, A2, and G2.

[illegible]

The bass line of 'The Rose Tree' is written in bass clef. It consists of four measures, each containing a triplet of eighth notes. The notes in the triplets are G2, A2, and B2. The first measure has a final G2, the second has a final A2, the third has a final B2, and the fourth has a final G2. The triplets are marked with a '3' below them.

The bass line of 'The Rose Tree' is written in bass clef. It consists of four measures, each containing a triplet of eighth notes. The notes in the triplets are G2, A2, and B2. The first measure has a '3' below the notes, and the other three measures also have a '3' below the notes. The notes are beamed together, and there are slurs over each triplet.

V.S.

22



24



26



28



30



32



34



36



38



40







V.S.

65



67



69



71



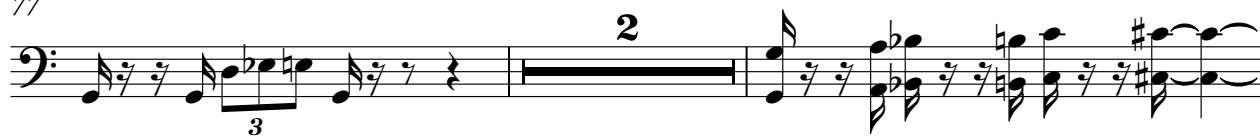
73



75



77



81



84



86



88



90



93



95



## Solo

## Memphis Slim - Cow Cow Blues

♩ = 128,000000

4

6

8

10

12

14

16

18

20

V.S.

22 3 3 3 3

24 3 3 3 3

26 3 3 3 3

28 3 3 3 3

30 3 3 3 3

32 3 3 3 3

34 3 3 3 3

36 3 3 3 3

38 3 3 3 3

40 3 3 3



64 3 3 3 3

66 3 3 3 3

68 3 3 3 3

70 3 3 3 3

72 3 3 3 3

74 3 3 3 3

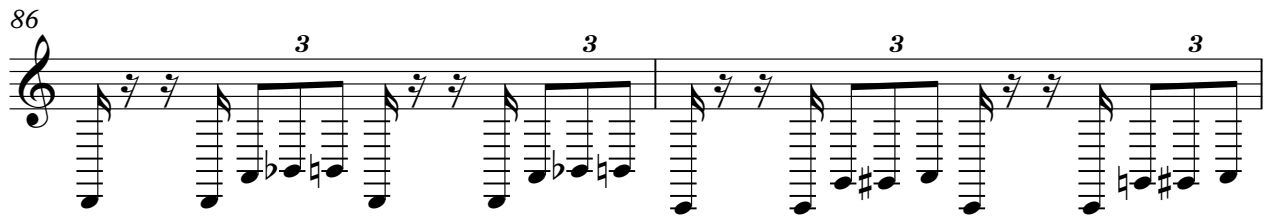
76 3 3 3 2

80 3

82 3 3 3 3

84 3 3 3 3

Detailed description: This musical score is for a guitar solo, spanning measures 64 to 92. It is written in a single system with 12 staves. The notation is in treble clef. The key signature has one flat (B-flat). The time signature is 4/4. The piece features a complex rhythmic pattern of eighth and sixteenth notes, often beamed together. Triplet markings (the number 3) are placed above groups of notes in measures 64, 66, 68, 70, 72, 74, 76, 80, 82, 84, and 86. In measure 76, there is a '2' marking above a pair of notes. Measure 80 contains a long horizontal line, likely indicating a sustained note or a specific technique. Measure 82 features a triplet of eighth notes followed by a triplet of sixteenth notes. Measure 84 continues the triplet pattern. The piece concludes with a final measure (92) containing a triplet of eighth notes.





## Solo

## Memphis Slim - Cow Cow Blues

♩ = 128,000000

4

8

11

14

16

19

21

23

25

27

V.S.



52

54

57

59

61

63

65

67

70

73

V.S.

75

77

79

81

84

86

88

90

92

94

96

3

3

The image shows a musical score for a guitar solo, measure 96. The notation is on a single staff with a treble clef. The key signature has one sharp (F#). The measure begins with a quarter rest, followed by a triplet of eighth notes (F#, A, C#) beamed together. This is followed by a quarter rest, then a quarter note (F#), and another quarter rest. The measure ends with a double bar line. Above the staff, the word 'Solo' is written, and the number '5' is in the top right corner. The measure number '96' is written above the first staff line. A bracket below the staff indicates the triplet of eighth notes, with the number '3' written below the bracket.

Birdsong

Memphis Slim - Cow Cow Blues

