

Metroid - escape

♩ = 75,000000

guitar

guitar

Electric Bass

guitar

guitar

Electric Bass

guitar

guitar

Electric Bass

guitar

guitar

Electric Bass

TablEdited by Carman Soto

8

guitar

guitar

Electric Bass

3 6 6 3

10

guitar

guitar

Electric Bass

3 3

12

guitar

guitar

Electric Bass

3 6 6 3

13

guitar

guitar

Electric Bass

6 6 3

15

guitar

guitar

Electric Bass

This system contains measures 15 and 16. Measure 15 features a guitar part with a dotted quarter note on the high E string and a quarter note on the high G string. The second guitar part has a triplet of eighth notes on the high E string, followed by a quarter note on the high G string, and then a sixteenth-note run on the high E string. The electric bass part has a quarter note on the low E string, a quarter note on the low G string, and a quarter note on the low B string with a flat. Measure 16 continues with a dotted quarter note on the high E string and a quarter note on the high G string. The second guitar part has a sixteenth-note run on the high E string, followed by a quarter note on the high G string, and then another sixteenth-note run on the high E string. The electric bass part has a quarter note on the low E string, a quarter note on the low G string, and a quarter note on the low B string with a flat.

16

guitar

guitar

Electric Bass

This system contains measures 17 and 18. Measure 17 features a guitar part with a dotted quarter note on the high E string and a quarter note on the high G string. The second guitar part has a sixteenth-note run on the high E string, followed by a quarter note on the high G string, and then another sixteenth-note run on the high E string. The electric bass part has a quarter note on the low E string, a quarter note on the low G string, and a quarter note on the low B string with a flat. Measure 18 continues with a dotted quarter note on the high E string and a quarter note on the high G string. The second guitar part has a sixteenth-note run on the high E string, followed by a quarter note on the high G string, and then another sixteenth-note run on the high E string. The electric bass part has a quarter note on the low E string, a quarter note on the low G string, and a quarter note on the low B string with a flat.

17

guitar

guitar

Electric Bass

This system contains measures 19 and 20. Measure 19 features a guitar part with a dotted quarter note on the high E string and a quarter note on the high G string. The second guitar part has a sixteenth-note run on the high E string, followed by a quarter note on the high G string, and then another sixteenth-note run on the high E string. The electric bass part has a quarter note on the low E string, a quarter note on the low G string, and a quarter note on the low B string with a flat. Measure 20 continues with a dotted quarter note on the high E string and a quarter note on the high G string. The second guitar part has a sixteenth-note run on the high E string, followed by a quarter note on the high G string, and then another sixteenth-note run on the high E string. The electric bass part has a quarter note on the low E string, a quarter note on the low G string, and a quarter note on the low B string with a flat.

19

guitar

guitar

Electric Bass

This system contains measures 21 and 22. Measure 21 features a guitar part with a dotted quarter note on the high E string and a quarter note on the high G string. The second guitar part has a triplet of eighth notes on the high E string, followed by a quarter note on the high G string, and then a sixteenth-note run on the high E string. The electric bass part has a quarter note on the low E string, a quarter note on the low G string, and a quarter note on the low B string with a flat. Measure 22 continues with a dotted quarter note on the high E string and a quarter note on the high G string. The second guitar part has a sixteenth-note run on the high E string, followed by a quarter note on the high G string, and then another sixteenth-note run on the high E string. The electric bass part has a quarter note on the low E string, a quarter note on the low G string, and a quarter note on the low B string with a flat.

20 \flat e

guitar

guitar

Electric Bass

21 \flat e e \flat e e

guitar

guitar

Electric Bass

23 \flat e e \flat e e

guitar

guitar

Electric Bass

25 \flat e e \flat e e

guitar

guitar

Electric Bass

27

guitar

guitar

Electric Bass

28

guitar

guitar

Electric Bass

30

guitar

guitar

Electric Bass

32

guitar

guitar

Electric Bass

33

guitar

guitar

Electric Bass

35

guitar

guitar

Electric Bass

36

guitar

guitar

Electric Bass

37

guitar

guitar

Electric Bass

39

guitar

guitar

Electric Bass

40

guitar

guitar

Electric Bass

guitar

Metroid - escape

♩ = 75,000000

3

3 3 3 3

3 3 3

3 3 3 3

3

3 3 3 3

3 3 3

3

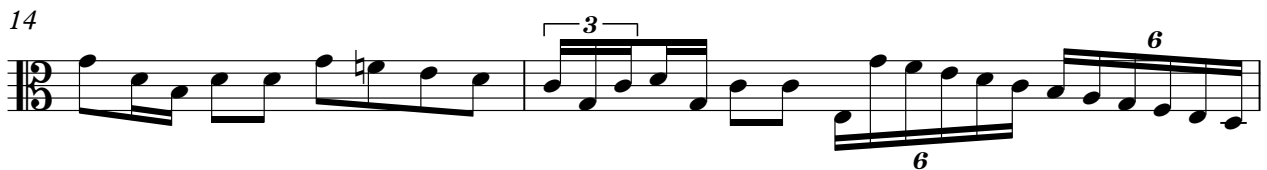
3

TablEdited by Carman Soto

guitar

Metroid - escape

♩ = 75,000000



TablEdited by Carman Soto

V.S.

2

guitar

35

Musical notation for guitar, measures 35-36. Measure 35 starts with a triplet of eighth notes. Measure 36 contains five sixteenth-note runs, each marked with a '6'.

37

Musical notation for guitar, measures 37-38. Measure 37 contains two sixteenth-note runs, each marked with a '6'. Measure 38 contains four eighth notes.

39

Musical notation for guitar, measures 39-40. Measure 39 starts with a triplet of eighth notes. Measure 40 contains five sixteenth-note runs, each marked with a '6'.

Metroid - escape

Electric Bass

♩ = 75,000000

The image displays a bass guitar tablature for the piece 'Metroid - escape'. It consists of ten staves of music, each starting with a measure number (3, 5, 7, 9, 11, 13, 17, 21, 23). The music is written in 4/4 time and features a complex, fast-paced rhythmic pattern. The notation includes various note values, rests, and articulation marks. Brackets with the number '3' are placed under groups of notes, indicating triplets. In measures 7, 11, and 13, brackets with the number '6' are used to denote sixteenth-note runs. The piece concludes with a double bar line at the end of the tenth staff.

TablEdited by Carman Soto

V.S.

2

Electric Bass

25

Musical notation for measures 25 and 26. The notation is in bass clef. Measure 25 contains a triplet of eighth notes, followed by a sequence of eighth notes with triplet markings over groups of three notes. Measure 26 continues this pattern with triplet markings over groups of three notes.

27

Musical notation for measures 27 and 28. Measure 27 features a triplet of eighth notes, followed by eighth notes with triplet markings. Measure 28 contains eighth notes with triplet markings, followed by sixteenth notes with sextuplet markings (labeled '6') and a final triplet of eighth notes.

29

Musical notation for measures 29 and 30. Measure 29 contains eighth notes with triplet markings. Measure 30 continues with eighth notes and triplet markings.

31

Musical notation for measures 31 and 32. Measure 31 features eighth notes with triplet markings. Measure 32 contains eighth notes with triplet markings, followed by sixteenth notes with sextuplet markings (labeled '6') and a final triplet of eighth notes.

33

Musical notation for measures 33 through 36. Measure 33 has eighth notes with triplet markings. Measure 34 continues with eighth notes and triplet markings. Measure 35 features a key signature change to one flat (B-flat) and eighth notes. Measure 36 has eighth notes with a sharp sign (F#) and triplet markings.

37

Musical notation for measures 37 through 40. Measure 37 has eighth notes with triplet markings. Measure 38 continues with eighth notes and triplet markings. Measure 39 features a key signature change to one sharp (F#) and eighth notes. Measure 40 has eighth notes with a sharp sign (F#) and triplet markings.