

Mike M - Cat Stevens

♩ = 109,999908

Vocal

E1

A

D

G

B

E2

Bass

Piano Lead



6

Vocal

E1

A

D

G

B

E2

Bass

Piano Lead

11

Vocal

E1

A

D

G

B

E2

Bass

Piano Lead



16

Vocal

E1

A

D

G

B

E2

Bass

Piano Lead

21

Vocal

E1

A

D

G

B

E2

Bass

Piano Lead



26

Vocal

E1

A

D

G

B

E2

Bass

Piano Lead

31

Vocal

E1

A

D

G

B

E2

Bass

Piano Lead



36

Vocal

E1

A

D

G

B

E2

Bass

Piano Lead

41

Vocal

E1

A

D

G

B

E2

Bass

Piano Lead



46

Vocal

E1

A

D

G

B

E2

Bass

Piano Lead

51

Vocal

E1

A

D

G

B

E2

Bass

Piano Lead



56

Vocal

E1

A

D

G

B

E2

Bass

Piano Lead

61

Vocal

E1

A

D

G

B

E2

Bass

Piano Lead



68

Vocal

E1

A

D

G

B

E2

Bass

Piano Lead

73

Vocal

E1

A

D

G

B

E2

Bass

Piano Lead



77

Vocal

E1

A

D

G

B

E2

Bass

Piano Lead



Mike M - Cat Stevens

Vocal

♩ = 109,999908

4

9

14

19

24

29

34

39

44

49

V.S.

54



59



64



69



74



77



♩ = 109,999908

8

17

26

34

41

47

53

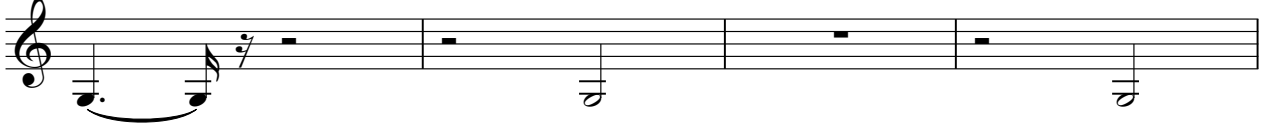
59

66

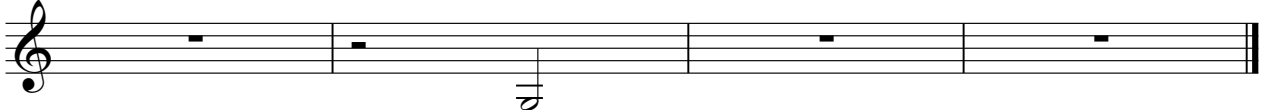
2

E1

73



77

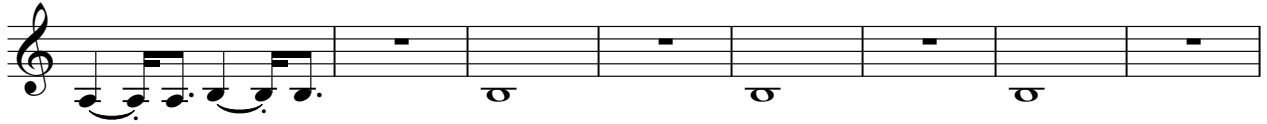




54



59



67



73



77





47



51



55



59



68



73



77









Mike M - Cat Stevens

B

♩ = 109,999908



V.S.

46



51



56



62



69



73



77



♩ = 109,999908

6

11

16

21

26

31

36

41

46



Mike M - Cat Stevens

Bass

♩ = 109,999908

6

12

18

24

30

36

42

48

53

Detailed description: This is a bass guitar sheet music score for the song 'Mike M' by Cat Stevens. The music is written in 4/4 time with a tempo of 109,999908. The score consists of ten staves of music, each starting with a measure number (6, 12, 18, 24, 30, 36, 42, 48, 53). The notation includes various bass clefs, notes, rests, and chord symbols. The music features a mix of eighth and sixteenth notes, often beamed together, and some chords. The overall style is a classic rock bass line.

V.S.

2

Bass

59

66

72

77



Piano Lead

Mike M - Cat Stevens

♩ = 109,999908

6

11

16

21

26

31

36

41

45

V.S.

50



55



60



65



70



75



78

