

Mike M - ROXETTE 2

♩ = 133,000244

Alto sax

Hi-hats

Drum fills

Marimba

Driven guitar

Ac. bass

Lead (female)

Rhodes

Celesta

Back-up (chor. piano)

Chords (syn strings)

Lead (male)

♩ = 133,000244

Echoes

6

Hi-hats  
Drums  
Marimba  
Ac. bass  
Lead (female)  
Chords (syn strings)

Detailed description: This block contains the musical notation for measures 6 and 7. It features six staves: Hi-hats, Drums, Marimba, Ac. bass, Lead (female), and Chords (syn strings). The Hi-hats part shows a consistent pattern of eighth notes with 'x' marks above them. The Drums part has a steady eighth-note rhythm. The Marimba part consists of eighth-note patterns with rests. The Ac. bass part has a sparse eighth-note line. The Lead (female) part has a melodic line with some rests. The Chords (syn strings) part features sustained chords with some movement.



8

Hi-hats  
Drums  
Marimba  
Ac. bass  
Lead (female)  
Celesta  
Chords (syn strings)

Detailed description: This block contains the musical notation for measures 8, 9, and 10. It features seven staves: Hi-hats, Drums, Marimba, Ac. bass, Lead (female), Celesta, and Chords (syn strings). The Hi-hats and Drums parts continue their patterns from the previous block. The Marimba part has a similar eighth-note pattern. The Ac. bass part has a sparse eighth-note line. The Lead (female) part has a melodic line with rests. The Celesta part has a few notes in measure 9. The Chords (syn strings) part features sustained chords with some movement.

11

Hi-hats  
Drums  
Marimba  
Ac. bass  
Lead (female)  
Chords (syn strings)

This system contains measures 11 and 12. It features six staves: Hi-hats, Drums, Marimba, Ac. bass, Lead (female), and Chords (syn strings). The Hi-hats and Drums parts are consistent with the previous system. The Marimba part has a rhythmic pattern of eighth notes. The Ac. bass part has a similar rhythmic pattern. The Lead (female) part has a melodic line with some rests. The Chords (syn strings) part has a complex chordal structure with many notes.

13

Hi-hats  
Drums  
Ac. bass  
Lead (female)  
Celesta  
Chords (syn strings)

This system contains measures 13 and 14. It features six staves: Hi-hats, Drums, Ac. bass, Lead (female), Celesta, and Chords (syn strings). The Hi-hats and Drums parts are consistent with the previous system. The Ac. bass part has a similar rhythmic pattern. The Lead (female) part has a melodic line with some rests. The Celesta part has a rhythmic pattern of eighth notes. The Chords (syn strings) part has a complex chordal structure with many notes.

16

Hi-hats  
Drums  
Ac. bass  
Lead (female)  
Chords (syn strings)

This system contains measures 16 and 17. It features five staves: Hi-hats, Drums, Ac. bass, Lead (female), and Chords (syn strings). The Hi-hats and Drums parts are consistent with the previous system. The Ac. bass part has a similar rhythmic pattern. The Lead (female) part has a melodic line with some rests. The Chords (syn strings) part has a complex chordal structure with many notes.

19

Hi-hats

Drums

Ac. bass

Lead (female)

Chords (syn strings)



22

Alto sax

Hi-hats

Drums

Ac. bass

Lead (female)

Chords (syn strings)

25

Hi-hats

Drums

Drum fills

Crash

Ac. bass

Lead (female)

Back-up (chor. piano)

Chords (syn strings)

Lead (male)



28

Hi-hats

Drums

Ac. bass

Back-up (chor. piano)

Chords (syn strings)

Lead (male)

31

Hi-hats

Drums

Drum fills

Crash

Marimba

Ac. bass

Lead (female)

Back-up (chor. piano)

Chords (syn strings)

Lead (male)

Detailed description: This musical score page contains nine staves for measures 31, 32, and 33. The percussion section includes Hi-hats with a consistent 'x' pattern, Drums with a steady eighth-note rhythm, Drum fills with occasional eighth-note patterns, and a Crash cymbal that sounds in measure 33. The melodic section includes Marimba, Acoustic Bass, Lead (female), Back-up (chor. piano), Chords (syn strings), and Lead (male). The Back-up and Lead (female) parts are mostly silent, while the Lead (male) part has a rhythmic melody. The Chords part features sustained chords with some movement in measure 33.

34

Hi-hats

Drums

Marimba

Ac. bass

Lead (female)

Celesta

Chords (syn strings)



37

Hi-hats

Drums

Marimba

Ac. bass

Lead (female)

Chords (syn strings)

39

Hi-hats

Drums

Crash

Marimba

Ac. bass

Lead (female)

Celesta

Chords (syn strings)

Detailed description: This musical score block covers measures 39, 40, and 41. The Hi-hats part features a consistent rhythmic pattern of eighth notes with 'x' marks above them. The Drums part has a steady bass drum pattern. The Crash part is mostly silent, with a single crash symbol in measure 41. The Marimba part has a melodic line in measure 39. The Ac. bass part provides a rhythmic accompaniment. The Lead (female) part has a vocal line with a melodic phrase. The Celesta part has a melodic line in measure 40. The Chords (syn strings) part features a complex chordal texture with a triplet in measure 39.



42

Hi-hats

Drums

Ac. bass

Lead (female)

Chords (syn strings)

Detailed description: This musical score block covers measures 42, 43, and 44. The Hi-hats part continues with the same rhythmic pattern. The Drums part maintains the bass drum pattern. The Ac. bass part has a melodic line. The Lead (female) part has a vocal line with a melodic phrase. The Chords (syn strings) part features a complex chordal texture with a triplet in measure 42.



45

Hi-hats

Drums

Ac. bass

Lead (female)

Chords (syn strings)



49

Alto sax

Hi-hats

Drums

Ac. bass

Lead (female)

Chords (syn strings)

52

Hi-hats

Drums

Drum fills

Crash

Ac. bass

Lead (female)

Back-up (chor. piano)

Chords (syn strings)

Lead (male)



55

Hi-hats

Drums

Ac. bass

Back-up (chor. piano)

Chords (syn strings)

Lead (male)

58

Hi-hats

Drums

Drum fills

Ac. bass

Back-up (chor. piano)

Chords (syn strings)

Lead (male)



61

Hi-hats

Drums

Crash

Ac. bass

Back-up (chor. piano)

Chords (syn strings)

Lead (male)

64

Hi-hats  
Drums  
Ac. bass  
Back-up (chor. piano)  
Chords (syn strings)  
Lead (male)

Detailed description: This block contains the musical score for measures 64, 65, and 66. It features six staves. The Hi-hats staff shows a consistent pattern of eighth notes with 'x' marks above them. The Drums staff has a steady eighth-note rhythm. The Ac. bass staff uses a bass clef and features a mix of eighth and quarter notes. The Back-up (chor. piano) staff is in treble clef with a simple eighth-note melody. The Chords (syn strings) staff shows three chords: a G major triad, a G#m triad, and a G major triad. The Lead (male) staff is in treble clef and contains a complex eighth-note melody with various accidentals.



67

Hi-hats  
Drums  
Crash  
Driven guitar  
Ac. bass  
Chords (syn strings)  
Lead (male)

Detailed description: This block contains the musical score for measures 67, 68, and 69. It features seven staves. The Hi-hats and Drums staves continue with their respective patterns. A Crash cymbal is used in measure 68. The Driven guitar staff is in treble clef and plays a series of chords, primarily G major and G#m. The Ac. bass staff continues with its eighth-note pattern. The Chords (syn strings) staff shows three chords: a G major triad, a G#m triad, and a G major triad. The Lead (male) staff is in treble clef and has a melody that ends in measure 67, with rests in measures 68 and 69.

71

Alto sax

Hi-hats

Drums

Drum fills

Driven guitar

Ac. bass

Rhodes

Chords (syn strings)

Detailed description: This is a multi-staff musical score for a jazz ensemble. The score is divided into two systems. The first system includes Alto sax, Hi-hats, Drums, and Drum fills. The second system includes Driven guitar, Ac. bass, Rhodes, and Chords (syn strings). The Alto sax part begins at measure 71 with a melodic line in G major. The Hi-hats play a steady eighth-note pattern. The Drums play a simple backbeat. The Drum fills part has rests in the first two measures and a short melodic phrase in the third. The Driven guitar part features a rhythmic pattern of eighth notes with a driving feel. The Ac. bass part provides a steady bass line. The Rhodes part has a few notes in the first measure. The Chords (syn strings) part shows a progression of chords, including a sustained chord in the second measure.

74

Hi-hats  
Drums  
Drum fills  
Crash  
Driven guitar  
Ac. bass  
Rhodes  
Chords (syn strings)  
Lead (male)  
Echoes

Detailed description: This musical score block covers measures 74 to 76. It features a drum kit with Hi-hats, Drums, Drum fills, and a Crash cymbal. The Hi-hats play a consistent eighth-note pattern. The Drums play a steady quarter-note bass drum pattern. Drum fills occur at the start of measure 74 and the end of measure 76. The Crash cymbal is used in measure 76. The Driven guitar part consists of eighth-note patterns. The Acoustic bass (Ac. bass) provides a rhythmic accompaniment with quarter and eighth notes. The Rhodes piano part has sparse notes in measures 75 and 76. The Chords (syn strings) part shows chord progressions with some grace notes. The Lead (male) part has a melodic line starting in measure 75. The Echoes part has a few notes in measures 75 and 76.



77

Hi-hats  
Drums  
Ac. bass  
Back-up (chor. piano)  
Chords (syn strings)  
Lead (male)

Detailed description: This musical score block covers measures 77 to 79. It features a drum kit with Hi-hats, Drums, and Acoustic bass (Ac. bass). The Hi-hats continue with their eighth-note pattern. The Drums play a steady quarter-note bass drum pattern. The Ac. bass part continues with a rhythmic accompaniment. The Back-up (chor. piano) part has a melodic line. The Chords (syn strings) part shows a long chord with grace notes. The Lead (male) part has a melodic line.

80

Hi-hats  
Drums  
Ac. bass  
Back-up (chor. piano)  
Chords (syn strings)  
Lead (male)

Detailed description: This musical score block covers measures 80, 81, and 82. It features six staves. The Hi-hats staff shows a consistent rhythmic pattern of eighth notes with 'x' marks above them. The Drums staff has a similar eighth-note pattern. The Ac. bass staff is in bass clef with a steady eighth-note line. The Back-up (chor. piano) staff is in treble clef and mostly contains rests. The Chords (syn strings) staff shows a sequence of chords with some grace notes. The Lead (male) staff is in treble clef and contains a melodic line with grace notes and slurs.



83

Hi-hats  
Drums  
Crash  
Ac. bass  
Chords (syn strings)  
Lead (male)

Detailed description: This musical score block covers measures 83, 84, and 85. It features six staves. The Hi-hats staff continues the eighth-note pattern. The Drums staff continues the eighth-note pattern. The Crash staff has a single crash symbol in measure 85. The Ac. bass staff continues its eighth-note line. The Chords (syn strings) staff shows sustained chords with grace notes. The Lead (male) staff continues its melodic line with grace notes and slurs.

86

Hi-hats

Drums

Ac. bass

Lead (female)

Chords (syn strings)

Lead (male)



90

Hi-hats

Drums

Crash

Ac. bass

Back-up (chor. piano)

Chords (syn strings)

Lead (male)



93

Hi-hats  
Drums  
Ac. bass  
Lead (female)  
Chords (syn strings)  
Lead (male)

Detailed description: This musical score block covers measures 93, 94, and 95. It features six staves. The Hi-hats staff shows a consistent pattern of eighth notes with 'x' marks above them. The Drums staff has a steady eighth-note bass drum pattern. The Ac. bass staff uses a mix of eighth and quarter notes. The Lead (female) staff has a melodic line starting in measure 94. The Chords (syn strings) staff features sustained chords with a sharp sign. The Lead (male) staff has a few notes in measure 93 and then rests.



96

Hi-hats  
Drums  
Ac. bass  
Back-up (chor. piano)  
Chords (syn strings)  
Lead (male)

Detailed description: This musical score block covers measures 96, 97, and 98. It features six staves. The Hi-hats staff has a pattern of eighth notes with 'x' marks, ending in measure 97. The Drums staff has a steady eighth-note bass drum pattern. The Ac. bass staff uses a mix of eighth and quarter notes. The Back-up (chor. piano) staff has a melodic line. The Chords (syn strings) staff features sustained chords with a sharp sign. The Lead (male) staff has a melodic line starting in measure 97.

Alto sax

Mike M - ROXETTE 2

♩ = 133,000244

22 26

51

20 27

# Mike M - ROXETTE 2

## Hi-hats

♩ = 133,000244

5

9

13

17

21

25

29

33

37

41

V.S.

Hi-hats

45

49

53

57

61

65

69

73

77

81

Hi-hats

85

Musical notation for hi-hats starting at measure 85. The notation consists of a single staff with a double bar line at the beginning. The rhythm is a steady eighth-note pattern. Each eighth note has an 'x' mark above it, indicating a hi-hat hit. The notes are grouped into four measures, with a double bar line at the end of the fourth measure.

89

Musical notation for hi-hats starting at measure 89. The notation consists of a single staff with a double bar line at the beginning. The rhythm is a steady eighth-note pattern. Each eighth note has an 'x' mark above it, indicating a hi-hat hit. The notes are grouped into four measures, with a double bar line at the end of the fourth measure.

93

Musical notation for hi-hats starting at measure 93. The notation consists of a single staff with a double bar line at the beginning. The rhythm is a steady eighth-note pattern. Each eighth note has an 'x' mark above it, indicating a hi-hat hit. The notes are grouped into four measures, with a double bar line at the end of the fourth measure.

96

Musical notation for hi-hats starting at measure 96. The notation consists of a single staff with a double bar line at the beginning. The rhythm is a steady eighth-note pattern. Each eighth note has an 'x' mark above it, indicating a hi-hat hit. The notes are grouped into four measures, with a double bar line at the end of the fourth measure. A large number '2' is placed above the final measure, indicating a double bar line.

Mike M - ROXETTE 2

Drums

♩ = 133,000244

5



10



15



20



25



30



35



40



45



50



V.S.

55



60



65



70



75



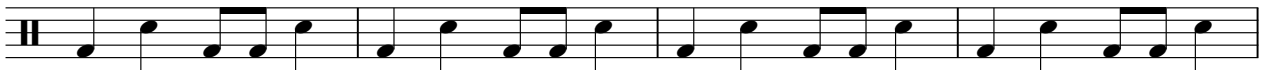
80



85



90



94



2

Drum fills

Mike M - ROXETTE 2

♩ = 133,000244

**4** **19**

Drum fill notation for measures 1-4. Measure 1 contains a 4-measure fill. Measure 2 contains a quarter rest followed by a quarter note triplet. Measure 3 contains a 19-measure fill. Measure 4 contains a quarter rest followed by a quarter note triplet.

**26** **6** **19**

Drum fill notation for measures 26-29. Measure 26 contains a 6-measure fill. Measure 27 contains a quarter rest followed by a quarter note triplet. Measure 28 contains a 19-measure fill. Measure 29 contains a quarter rest followed by a quarter note triplet.

**53** **7** **12**

Drum fill notation for measures 53-55. Measure 53 contains a 7-measure fill. Measure 54 contains a quarter rest followed by a quarter note triplet. Measure 55 contains a 12-measure fill.

**73** **25**

Drum fill notation for measures 73-75. Measure 73 contains a quarter rest followed by a quarter note triplet. Measure 74 contains a quarter rest followed by a quarter note triplet. Measure 75 contains a 25-measure fill.



Crash

Mike M - ROXETTE 2

♩ = 133,000244

25 6 7

A guitar tab for three measures. Measure 1 has a thick black bar at fret 25. Measure 2 has a thick black bar at fret 6. Measure 3 has a thick black bar at fret 7. Above each measure is a circled 'X' symbol.

42 11 7 6

A guitar tab for three measures. Measure 4 has a thick black bar at fret 11. Measure 5 has a thick black bar at fret 7. Measure 6 has a thick black bar at fret 6. Above each measure is a circled 'X' symbol.

69 7 8

A guitar tab for two measures. Measure 7 has a thick black bar at fret 7. Measure 8 has a thick black bar at fret 8. Above each measure is a circled 'X' symbol.

85 5 8

A guitar tab for two measures. Measure 9 has a thick black bar at fret 5. Measure 10 has a thick black bar at fret 8. Above each measure is a circled 'X' symbol.

Marimba

Mike M - ROXETTE 2

♩ = 133,000244

5



8



11

20



33

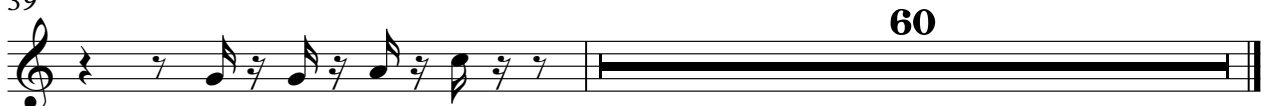


36



39

60



Driven guitar

Mike M - ROXETTE 2

♩ = 133,000244

**67**



71



74

**24**



# Mike M - ROXETTE 2

Ac. bass

♩ = 133,000244



V.S.

55



60



65



70



75



80



85



90



95



Mike M - ROXETTE 2

Lead (female)

♩ = 133,000244

Musical notation for the first staff, measures 1-5. The piece is in 4/4 time. Measure 1 is a whole rest. Measures 2-5 contain a melodic line starting with a quarter note, followed by eighth and sixteenth notes, and ending with a quarter note.

6

Musical notation for the second staff, measures 6-9. Measure 6 starts with a quarter rest followed by eighth notes. Measures 7-9 continue the melodic line with various note values and rests.

10

Musical notation for the third staff, measures 10-13. Measure 10 begins with a quarter rest and eighth notes. Measures 11-13 continue the melodic line.

14

Musical notation for the fourth staff, measures 14-17. Measure 14 starts with a quarter rest and eighth notes. Measures 15-17 continue the melodic line.

18

Musical notation for the fifth staff, measures 18-21. Measure 18 starts with a quarter rest and eighth notes. Measures 19-21 continue the melodic line.

22

Musical notation for the sixth staff, measures 22-24. Measure 22 starts with a quarter rest and eighth notes. Measure 23 continues the melodic line. Measure 24 is a whole rest with a '7' above it, indicating a seven-measure rest.

33

37

41

45

49

53

**34**

90

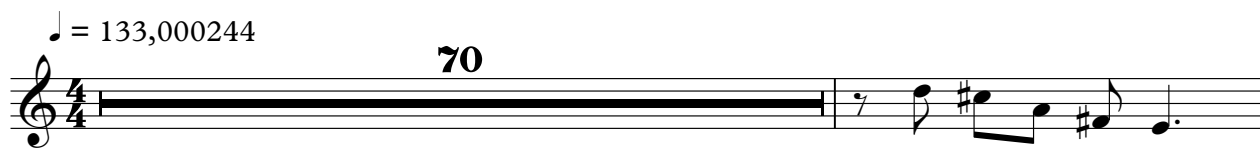
**3** **4**

Rhodes

Mike M - ROXETTE 2

♩ = 133,000244

**70**



72

**3**

**24**





Celesta

Mike M - ROXETTE 2

♩ = 133,000244

8 3

14

22 3

40

59

Back-up (chor. piano)

Mike M - ROXETTE 2

♩ = 133,000244

6 **21**

31 **22**

56 **3**

63 **10**

77

82 **8** **5** **3**

Detailed description: The image shows a musical score for guitar back-up in 4/4 time. The tempo is marked as ♩ = 133,000244. The score is divided into seven systems, each starting with a measure number. The first system (measures 1-5) contains a series of eighth and quarter notes. The second system (measures 6-10) features a 5-measure rest (labeled '21') followed by eighth notes. The third system (measures 11-15) has a 5-measure rest (labeled '22') in the middle. The fourth system (measures 16-20) includes a 3-measure rest (labeled '3'). The fifth system (measures 21-25) contains a 10-measure rest (labeled '10'). The sixth system (measures 26-30) consists of eighth notes. The seventh system (measures 31-35) features three rests of 8, 5, and 3 measures respectively.

# Mike M - ROXETTE 2

## Chords (syn strings)

♩ = 133,000244

8

13

19

24

29

35

40

45

50

V.S.

Chords (syn strings)

55

Musical staff for measure 55, featuring a treble clef and a key signature of one sharp (F#). The staff contains a series of chords and melodic lines, including a prominent eighth-note pattern in the upper register.

61

Musical staff for measure 61, featuring a treble clef and a key signature of one sharp (F#). The staff contains a series of chords and melodic lines, including a prominent eighth-note pattern in the upper register.

69

Musical staff for measure 69, featuring a treble clef and a key signature of one sharp (F#). The staff contains a series of chords and melodic lines, including a prominent eighth-note pattern in the upper register.

76

Musical staff for measure 76, featuring a treble clef and a key signature of one sharp (F#). The staff contains a series of chords and melodic lines, including a prominent eighth-note pattern in the upper register.

82

Musical staff for measure 82, featuring a treble clef and a key signature of one sharp (F#). The staff contains a series of chords and melodic lines, including a prominent eighth-note pattern in the upper register.

90

Musical staff for measure 90, featuring a treble clef and a key signature of one sharp (F#). The staff contains a series of chords and melodic lines, including a prominent eighth-note pattern in the upper register.

95

Musical staff for measure 95, featuring a treble clef and a key signature of one sharp (F#). The staff contains a series of chords and melodic lines, including a prominent eighth-note pattern in the upper register.

Mike M - ROXETTE 2

Lead (male)

♩ = 133,000244

24

28

32 18

53

57

61

65

67 6

75



79



83



87



93



Echoes

Mike M - ROXETTE 2

