

Mike Oldfield - Innocent 1

♩ = 150,000000

PAN FLUTE

DRUMS

SYN STRING

4

DRUMS

ACOU BASS

7

DRUMS

ACOU BASS

MELODY

9

DRUMS

ACOU BASS

MELODY



11

DRUMS

ACOU BASS

MELODY



13

ACOU BASS

MELODY



15

ACOU BASS

MELODY

SYN STRING

17

ACOU BASS

MELODY

SYN STRING



20

PAN FLUTE

ACOU BASS

MELODY

SYN STRING



23

ACOU BASS

MELODY

SYN STRING

26

ACOUBASS

MELODY

SYN STRING

ACOUBASS

MELODY

SYN STRING



29

PAN FLUTE

ACOUBASS

MELODY

SYN STRING

PAN FLUTE

ACOUBASS

MELODY

SYN STRING



31

OVERDRIVE

ACOUBASS

SYN STRING

OVERDRIVE

ACOUBASS

SYN STRING

34

OVERDRIVE

ACOU BASS

MELODY

SYN STRING



36

ACOU BASS

MELODY

SYN STRING



38

ACOU BASS

MELODY

SYN STRING

40

ACOUBASS

MELODY

SYN STRING



42

ACOUBASS

MELODY

SYN STRING



44

ACOUBASS

MELODY

SYN STRING

47

PAN FLUTE

ACOU BASS

MELODY

SYN STRING



50

PAN FLUTE

ACOU BASS

MELODY

SYN STRING



52

ACOU BASS

MELODY

SYN STRING

54

ACOU BASS

MELODY

SYN STRING



57

PAN FLUTE

ACOU BASS

MELODY

SYN STRING



59

OVERDRIVE

ACOU BASS

SYN STRING

62

OVERDRIVE

ACOU BASS

MELODY

SYN STRING



64

MELODY



66

ACOU BASS

MELODY

SYN STRING



68

ACOU BASS

MELODY

SYN STRING

70

ACOU BASS

MELODY

SYN STRING

Two musical systems for measures 70 and 71. The first system includes ACOU BASS (bass clef), MELODY (treble clef), and SYN STRING (treble clef). The second system continues the MELODY and SYN STRING parts.



72

ACOU BASS

MELODY

SYN STRING

Two musical systems for measures 72 and 73. The first system includes ACOU BASS (bass clef), MELODY (treble clef), and SYN STRING (treble clef). The second system continues the MELODY and SYN STRING parts.



75

PAN FLUTE

ACOU BASS

MELODY

SYN STRING

Three musical systems for measures 75, 76, and 77. The first system includes PAN FLUTE (treble clef), ACOU BASS (bass clef), MELODY (treble clef), and SYN STRING (treble clef). The second system continues the ACOU BASS, MELODY, and SYN STRING parts. The third system continues the ACOU BASS, MELODY, and SYN STRING parts.

78

PAN FLUTE

ACOU BASS

MELODY

SYN STRING



81

ACOU BASS

MELODY

SYN STRING



84

PAN FLUTE

ACOU BASS

MELODY

SYN STRING

86

PAN FLUTE

OVERDRIVE

ACOU BASS

MELODY

SYN STRING



89

OVERDRIVE

ACOU BASS

SYN STRING

91

ACOU BASS

MELODY

SYN BRASS

SYN STRING

ATMOSPHERE



93

ACOU BASS

MELODY

SYN BRASS

SYN STRING

ATMOSPHERE

95

ACOUBASS

MELODY

SYNBASS

SYNSTRING

ATMOSPHERE



97

PANFLUTE

OVERDRIVE

ACOUBASS

MELODY

SYNBASS

SYNSTRING

99

OVERDRIVE

ACOU BASS

MELODY

SYN BRASS

SYN STRING

ATMOSPHERE

Detailed description: This block contains the musical notation for measures 99 and 100. The score is arranged in six staves. The OVERDRIVE staff is mostly empty with a few notes. The ACOU BASS staff shows a rhythmic pattern of eighth notes. The MELODY staff features a sequence of notes with some rests. The SYN BRASS staff contains a series of chords with a consistent rhythmic pattern. The SYN STRING staff has a long, sustained chord. The ATMOSPHERE staff has sparse notes and rests.



101

ACOU BASS

MELODY

SYN BRASS

SYN STRING

ATMOSPHERE

Detailed description: This block contains the musical notation for measures 101 and 102. The score is arranged in five staves. The ACOU BASS staff shows a rhythmic pattern of eighth notes. The MELODY staff features a sequence of notes with some rests. The SYN BRASS staff contains a series of chords with a consistent rhythmic pattern. The SYN STRING staff has a long, sustained chord. The ATMOSPHERE staff has sparse notes and rests.

103

ACOUBASS

MELODY

SYNBASS

SYNSTRING

ATMOSPHERE



105

PANFLUTE

OVERDRIVE

ACOUBASS

MELODY

SYNBASS

SYNSTRING

107

OVERDRIVE

ACOU BASS

MELODY

SYN BRASS

SYN STRING

ATMOSPHERE



109

ACOU BASS

MELODY

SYN BRASS

SYN STRING

ATMOSPHERE

111

ACOUBASS

MELODY

SYNBASS

SYNSTRING

ATMOSPHERE



113

PANFLUTE

OVERDRIVE

ACOUBASS

MELODY

SYNBASS

SYNSTRING

115

OVERDRIVE

ACOU BASS

MELODY

SYN BRASS

SYN STRING

ATMOSPHERE

Detailed description: This block contains the musical notation for measures 115 and 116. The score is arranged in six staves. The OVERDRIVE staff has a whole rest in both measures. The ACOU BASS staff features a rhythmic pattern of eighth and quarter notes. The MELODY staff has a melodic line with eighth notes and rests. The SYN BRASS staff consists of chords with eighth-note rhythms. The SYN STRING staff has a sustained chord with a fermata. The ATMOSPHERE staff has a few scattered notes and rests.



117

ACOU BASS

MELODY

SYN BRASS

SYN STRING

ATMOSPHERE

Detailed description: This block contains the musical notation for measures 117 and 118. The score is arranged in five staves. The ACOU BASS staff continues with a rhythmic pattern. The MELODY staff has a melodic line with eighth notes and rests. The SYN BRASS staff consists of chords with eighth-note rhythms. The SYN STRING staff has a sustained chord with a fermata. The ATMOSPHERE staff has a few scattered notes and rests.

119

ACOUBASS

MELODY

SYNBASS

SYNSTRING

ATMOSPHERE



121

PANFLUTE

OVERDRIVE

ACOUBASS

MELODY

SYNBASS

SYNSTRING

123

PAN FLUTE

Musical staff for PAN FLUTE. It begins with a treble clef and a key signature of one flat. The first measure contains a quarter note G4, followed by a quarter rest. The second measure contains a quarter rest. The third and fourth measures each contain a whole rest.

OVERDRIVE

Musical staff for OVERDRIVE. It begins with a treble clef and a key signature of one flat. The first measure contains a half note G4 with a slur over it. The second measure contains a quarter note G4, followed by a quarter rest. The third and fourth measures each contain a whole rest.

ACOU BASS

Musical staff for ACOU BASS. It begins with a bass clef and a key signature of one flat. The first measure contains a quarter note G2, followed by a quarter rest. The second measure contains a quarter rest. The third and fourth measures each contain a whole rest.

MELODY

Musical staff for MELODY. It begins with a treble clef and a key signature of one flat. The first measure contains a quarter note G4, followed by a quarter rest. The second measure contains a quarter rest. The third and fourth measures each contain a whole rest.

SYN BRASS

Musical staff for SYN BRASS. It begins with a treble clef and a key signature of one flat. The first measure contains a quarter note G4, followed by a quarter rest. The second measure contains a quarter rest. The third and fourth measures each contain a whole rest.

SYN STRING

Musical staff for SYN STRING. It begins with a treble clef and a key signature of one flat. The first measure contains a quarter note G4, followed by a quarter rest. The second measure contains a quarter rest. The third and fourth measures each contain a whole rest.

ATMOSPHERE

Musical staff for ATMOSPHERE. It begins with a treble clef and a key signature of one flat. The first measure contains a quarter note G4, followed by a quarter rest. The second measure contains a quarter rest. The third and fourth measures each contain a whole rest.

PAN FLUTE

Mike Oldfield - Innocent 1

♩ = 150,000,000

19 6

29 18

51 6 18

77 6

87 10 6

106 6

115 6

DRUMS

Mike Oldfield - Innocent 1

$\text{♩} = 150,000,000$
2

Musical notation for the first system of the drum part, showing a 4/4 time signature and a tempo marking of 150,000,000. The notation includes a series of eighth notes with 'x' marks above them, indicating cymbal hits, and a bass drum pattern of quarter notes.

6

Musical notation for the second system of the drum part, starting at measure 6. It continues the pattern of eighth notes with cymbal hits and a bass drum pattern of quarter notes.

10 **114**

Musical notation for the third system of the drum part, starting at measure 10 and ending at measure 114. It shows the continuation of the drum pattern, ending with a double bar line.

OVERDRIVE

Mike Oldfield - Innocent 1

♩ = 150,000000

30

33

36

23

62

23

88

7

98

6

6

114

6

122

Mike Oldfield - Innocent 1

ACOU BASS

♩ = 150,000000

4



8



11



14



17



20



23



26



30



35



V.S.

38



41



44



48



52



56



61



67



70



73



77



81



85



90



93



97



101



105



109



113



V.S.

117



121



Mike Oldfield - Innocent 1

MELODY

♩ = 150,000000

6

10

13

17

22

27

4

35



38



41



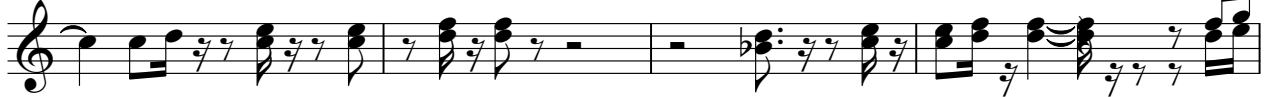
45



50



54



58



65

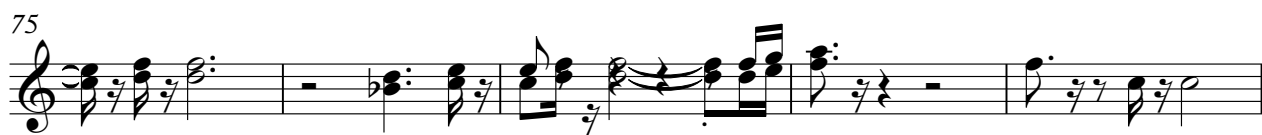


68

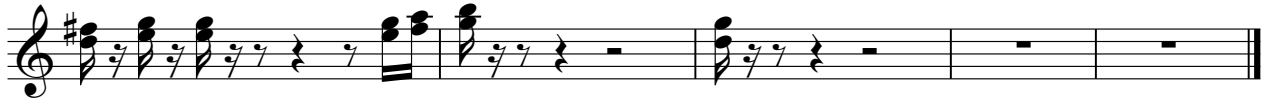


71





121



Mike Oldfield - Innocent 1

SYN BRASS

♩ = 150,000000
90

93

96

99

102

105

108

111

114

117

V.S.

SYN BRASS

120



122



SYN STRING

Mike Oldfield - Innocent 1

$\text{♩} = 150,000,000$

13

20

29

36

42

50

57

2 **4**

67



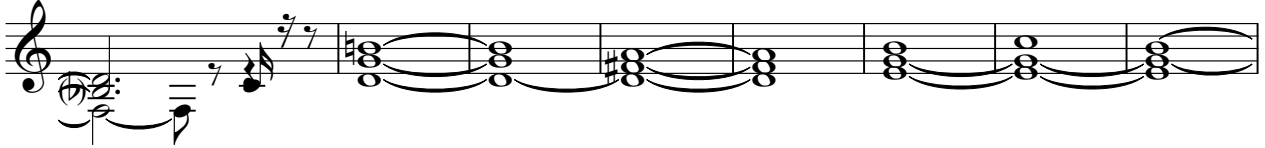
75



83



90



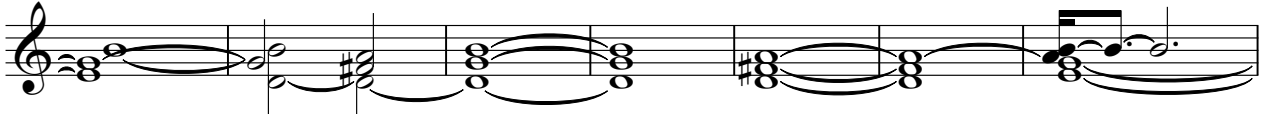
98



106



113



120



ATMOSPHERE

Mike Oldfield - Innocent 1

$\text{♩} = 150,000,000$

90



95

3



103

3



111

3



118

3

