

minibosses - w&w - tree

$\text{♩} = 700000690$

Percussion

Jazz Guitar

Electric Bass

4

Perc.

J. Gtr.

E. Bass

7

Perc.

J. Gtr.

E. Bass

10

Perc.

J. Gtr.

E. Bass

TablEdited by
TablEdited by

2

12

Perc.

The percussion staff features a series of rhythmic patterns. Above the staff, there are four groups of four 'x' marks, each with a horizontal line above it, indicating specific rhythmic accents or patterns. The staff itself contains rhythmic notation including eighth and sixteenth notes, rests, and a final bar with a whole rest.

J. Gtr.

The jazz guitar staff is written in treble clef. It contains a melodic line with eighth and sixteenth notes, including a sharp sign (#) and a flat sign (b). The line concludes with a whole rest in the final bar.

E. Bass

The electric bass staff is written in bass clef. It contains a melodic line with eighth and sixteenth notes, including a flat sign (b). The line concludes with a whole rest in the final bar.

Percussion

minibosses - w&w - tree

♩ = 100000690

1 2 3 4

5

5 6 7 8

9

9 10 11 12

12

13 14

TablEdited by
TablEdited by

♩ = 100000690

4

7

11

TablEdited by
TablEdited by

Electric Bass

minibosses - w&w - tree

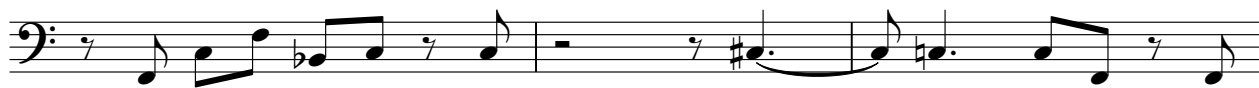
♩ = 100000690



5



9



12



TablEdited by
TablEdited by