

♩ = 96,999954

Percussion

Taiko Drums

Jazz Guitar

Kora

Electric Bass

Orchestra Hit

♩ = 96,999954

The image displays a musical score for six instruments: Percussion, Taiko Drums, Jazz Guitar, Kora, Electric Bass, and Orchestra Hit. The score is written in 4/4 time and has a tempo of 96,999954. The Percussion part features a complex rhythmic pattern with many notes and rests. The Taiko Drums part has a simpler, more rhythmic pattern. The Jazz Guitar part has a melodic line with many notes and rests. The Kora part has a melodic line with many notes and rests. The Electric Bass part has a melodic line with many notes and rests. The Orchestra Hit part has a melodic line with many notes and rests. The score is written in a standard musical notation style with a treble clef for the guitar, kora, and orchestra hit, and a bass clef for the taiko drums and electric bass. The percussion part is written in a simplified notation style with many notes and rests.

3

Perc. Taiko J. Gtr. Kora E. Bass Orch. Hit

This musical score block covers measures 3 and 4. It features six staves: Percussion (Perc.), Taiko, Japanese Guitar (J. Gtr.), Kora, Electric Bass (E. Bass), and Orchestral Hit (Orch. Hit). The Percussion staff shows a complex rhythmic pattern with 'x' marks above the notes. The Taiko staff has a sparse, rhythmic accompaniment. The J. Gtr. staff contains melodic lines with various chordal textures. The Kora staff provides harmonic support with sustained chords. The E. Bass staff has a simple bass line. The Orch. Hit staff features melodic phrases with some sustained notes.

4

Perc. Taiko J. Gtr. Kora E. Bass Orch. Hit

This musical score block covers measures 5 through 8. It continues with the same six staves: Percussion (Perc.), Taiko, Japanese Guitar (J. Gtr.), Kora, Electric Bass (E. Bass), and Orchestral Hit (Orch. Hit). The Percussion staff maintains its rhythmic pattern. The Taiko staff continues its sparse accompaniment. The J. Gtr. staff has melodic lines with some sustained notes. The Kora staff provides harmonic support with sustained chords. The E. Bass staff has a simple bass line. The Orch. Hit staff features melodic phrases with some sustained notes.

12.5"  
6.1,00  
Quan...

5

Perc.

J. Gtr.

Kora

E. Bass

Orch. Hit

22.5"  
10.1,00  
tro

32.5"  
14.1,00  
Quan..

10

Perc.

52.5"  
22.1,00  
lou...

18

Perc.

1'12.5"  
30.1,00  
Danzo...

26

Perc.

34

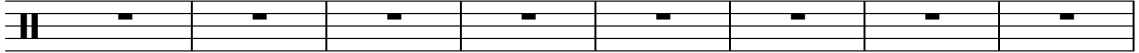
Perc.

42

Perc.

50

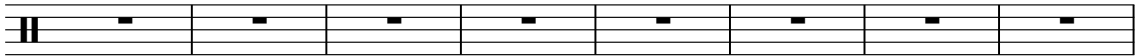
Perc.



2'32.5"  
62.1,00  
Samba

58

Perc.



2'52.5"  
70.1,00  
Samba

66

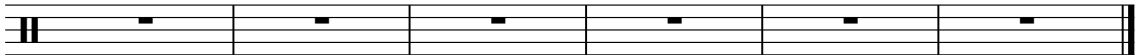
Perc.



3'12.5"  
78.1,00  
intro...

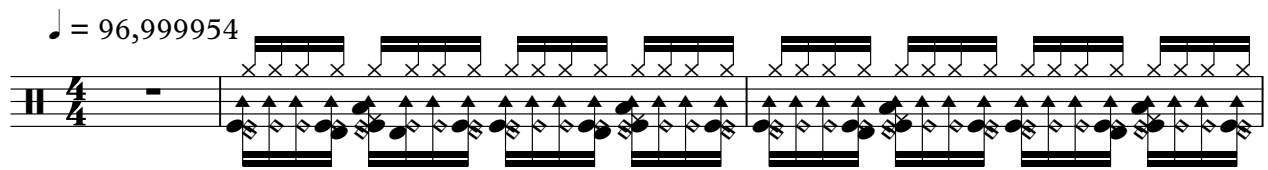
73

Perc.



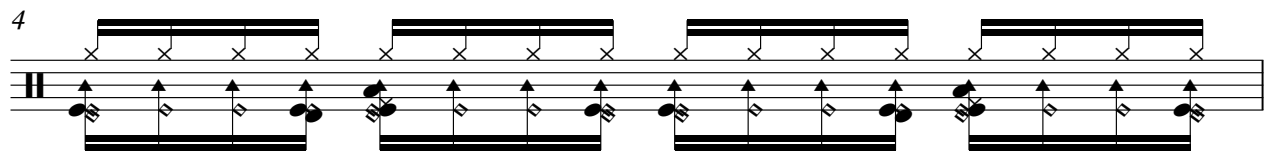
# Percussion

♩ = 96,999954



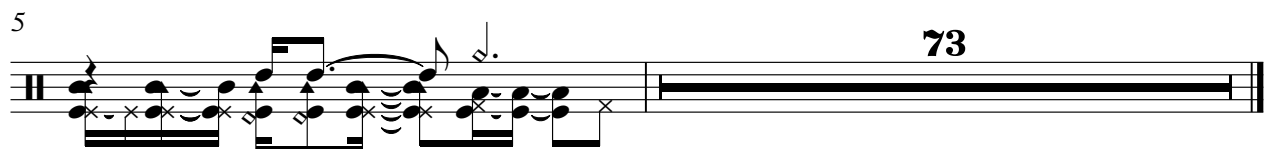
Musical notation for percussion in 4/4 time, measures 1-4. The notation consists of two staves. The top staff has a series of 'x' marks above the staff, indicating a rhythmic pattern. The bottom staff has a series of eighth notes with stems pointing up, indicating a rhythmic pattern.

4



Musical notation for percussion in 4/4 time, measures 5-8. The notation consists of two staves. The top staff has a series of 'x' marks above the staff, indicating a rhythmic pattern. The bottom staff has a series of eighth notes with stems pointing up, indicating a rhythmic pattern.

5



Musical notation for percussion in 4/4 time, measures 9-12. The notation consists of two staves. The top staff has a series of 'x' marks above the staff, indicating a rhythmic pattern. The bottom staff has a series of eighth notes with stems pointing up, indicating a rhythmic pattern. The number 73 is written above the staff.

# Taiko Drums

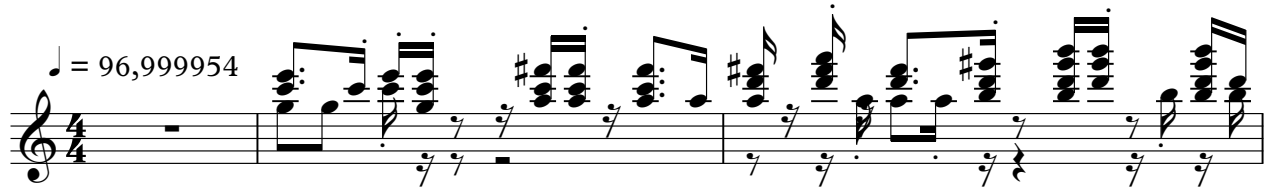
♪ = 96,999954

A musical staff in bass clef with a 4/4 time signature. The first measure contains a whole rest. The second, third, and fourth measures each contain a quarter rest followed by a quarter note chord consisting of two notes: a lower octave C (C2) and a higher octave C (C4).

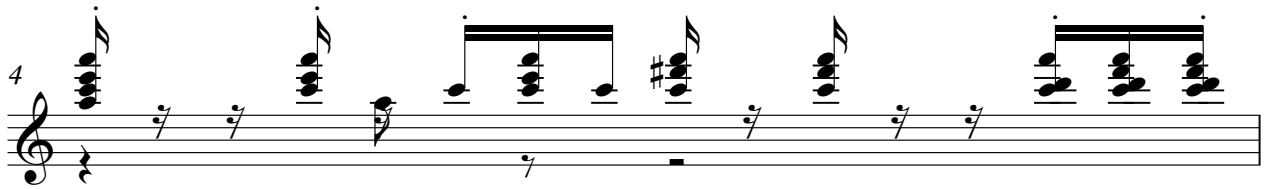
A musical staff in bass clef with a 4/4 time signature. The first measure contains a quarter rest followed by a quarter note chord (C2 and C4). The second measure contains a quarter rest followed by a quarter note chord (C2 and C4). The staff then continues with a thick black bar representing a long rest for 70 measures, ending with a double bar line. The number '74' is printed above the staff at the end of the bar.

# Jazz Guitar

♩ = 96,999954

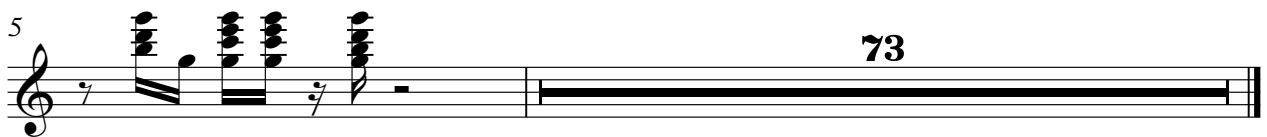


4



5

73



# Kora

♪ = 96,999954

The first staff of music is written in 4/4 time. It begins with a whole rest. The first measure contains a half note G4 (treble clef) with a sharp sign, and a half note D5. The second measure contains a quarter note G4 with a sharp sign, a quarter note D5, and a quarter note G4 with a sharp sign. The third measure contains a quarter note G4 with a sharp sign, a quarter note D5, and a quarter note G4 with a sharp sign. The fourth measure contains a quarter note G4 with a sharp sign, a quarter note D5, and a quarter note G4 with a sharp sign. The fifth measure contains a quarter note G4 with a sharp sign, a quarter note D5, and a quarter note G4 with a sharp sign. The sixth measure contains a quarter note G4 with a sharp sign, a quarter note D5, and a quarter note G4 with a sharp sign. The seventh measure contains a quarter note G4 with a sharp sign, a quarter note D5, and a quarter note G4 with a sharp sign. The eighth measure contains a quarter note G4 with a sharp sign, a quarter note D5, and a quarter note G4 with a sharp sign.

4

73

The second staff of music is written in 4/4 time. It begins with a quarter note G4 with a sharp sign, a quarter note D5, and a quarter note G4 with a sharp sign. The second measure contains a quarter note G4 with a sharp sign, a quarter note D5, and a quarter note G4 with a sharp sign. The third measure contains a quarter note G4 with a sharp sign, a quarter note D5, and a quarter note G4 with a sharp sign. The fourth measure contains a quarter note G4 with a sharp sign, a quarter note D5, and a quarter note G4 with a sharp sign. The fifth measure contains a quarter note G4 with a sharp sign, a quarter note D5, and a quarter note G4 with a sharp sign. The sixth measure contains a quarter note G4 with a sharp sign, a quarter note D5, and a quarter note G4 with a sharp sign. The seventh measure contains a quarter note G4 with a sharp sign, a quarter note D5, and a quarter note G4 with a sharp sign. The eighth measure contains a quarter note G4 with a sharp sign, a quarter note D5, and a quarter note G4 with a sharp sign. The ninth measure contains a quarter note G4 with a sharp sign, a quarter note D5, and a quarter note G4 with a sharp sign. The tenth measure contains a quarter note G4 with a sharp sign, a quarter note D5, and a quarter note G4 with a sharp sign. The eleventh measure contains a quarter note G4 with a sharp sign, a quarter note D5, and a quarter note G4 with a sharp sign. The twelfth measure contains a quarter note G4 with a sharp sign, a quarter note D5, and a quarter note G4 with a sharp sign. The thirteenth measure contains a quarter note G4 with a sharp sign, a quarter note D5, and a quarter note G4 with a sharp sign. The fourteenth measure contains a quarter note G4 with a sharp sign, a quarter note D5, and a quarter note G4 with a sharp sign. The fifteenth measure contains a quarter note G4 with a sharp sign, a quarter note D5, and a quarter note G4 with a sharp sign. The sixteenth measure contains a quarter note G4 with a sharp sign, a quarter note D5, and a quarter note G4 with a sharp sign. The seventeenth measure contains a quarter note G4 with a sharp sign, a quarter note D5, and a quarter note G4 with a sharp sign. The eighteenth measure contains a quarter note G4 with a sharp sign, a quarter note D5, and a quarter note G4 with a sharp sign. The nineteenth measure contains a quarter note G4 with a sharp sign, a quarter note D5, and a quarter note G4 with a sharp sign. The twentieth measure contains a quarter note G4 with a sharp sign, a quarter note D5, and a quarter note G4 with a sharp sign. The staff concludes with a double bar line.

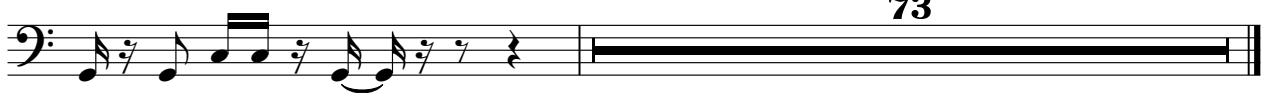


# Electric Bass

♩ = 96,999954



5



73

Orchestra Hit

♩ = 96,999954



<sup>4</sup>

