

Madonna - Material Girl

0.0"	1.0"
1.1,00	1.3,46
Madonna: Material Girl	

♩ = 137,000061

DRUMS

Cymbals

Perc

Bass

This system contains the first four staves of the musical score. The top staff is for DRUMS, the second for Cymbals, the third for Percussion, and the bottom for Bass. The time signature is 4/4. The drum part features a consistent eighth-note pattern. The cymbals part has a series of 'x' marks indicating hits. The percussion part has a few notes, including a half note. The bass part has a steady eighth-note line.



5

DRUMS

Cymbals

Perc

Guitar

Bass

Sweep

This system contains the next six staves of the musical score, starting at measure 5. The top three staves (DRUMS, Cymbals, Perc) continue the patterns from the first system. The Guitar staff shows a complex chordal structure with many beamed notes. The Bass staff continues its eighth-note line. The Sweep staff has a few notes with long horizontal lines underneath, indicating sustained or swept sounds.

8

DRUMS
Cymbals
Synth
Guitar
Bass
Clavi
Strings
Sweep

Detailed description: This block contains the musical notation for measures 8, 9, and 10. The score is arranged in a grand staff with eight staves. The top two staves are for DRUMS and Cymbals. The next three staves are for Synth, Guitar, and Bass. The bottom three staves are for Clavi, Strings, and Sweep. Measure 8 shows the start of the drum and cymbal patterns. Measure 9 features the synth and clavi parts. Measure 10 continues the instrumental textures.



11

DRUMS
Cymbals
Bells
Synth
Guitar
Bass
Clavi
Strings
Sweep

Detailed description: This block contains the musical notation for measures 11, 12, and 13. The score is arranged in a grand staff with nine staves. The top two staves are for DRUMS and Cymbals. The next three staves are for Bells, Synth, and Guitar. The bottom four staves are for Bass, Clavi, Strings, and Sweep. Measure 11 introduces the Bells part. Measure 12 continues the instrumental textures. Measure 13 concludes the section with sustained notes in the Sweep and Clavi parts.

14

DRUMS
Cymbals
Synth
Guitar
Bass
Clavi
Strings
Sweep

Detailed description: This block contains the musical notation for measures 14, 15, and 16. The score is arranged in a grand staff with eight staves. The top two staves are for DRUMS and Cymbals. The next four staves are for Synth, Guitar, Bass, and Clavi. The bottom two staves are for Strings and Sweep. Measure 14 shows a rhythmic pattern in the drums and cymbals, with the synth and strings playing a melodic line. The guitar plays a complex chordal pattern. Measure 15 continues the pattern, with a triplet of eighth notes in the synth and strings. Measure 16 features a triplet of eighth notes in the synth and strings, and a sweep-picked chord in the guitar.



17

DRUMS
Cymbals
Bells
Synth
Guitar
Bass
Clavi
Strings

Detailed description: This block contains the musical notation for measures 17, 18, and 19. The score is arranged in a grand staff with eight staves. The top two staves are for DRUMS and Cymbals. The next four staves are for Bells, Synth, Guitar, and Bass. The bottom two staves are for Clavi and Strings. Measure 17 shows a rhythmic pattern in the drums and cymbals, with the bells playing a simple melody. The synth and strings are silent. The guitar plays a complex chordal pattern. Measure 18 continues the pattern, with the bells playing a simple melody. The synth and strings are silent. The guitar plays a complex chordal pattern. Measure 19 features a rhythmic pattern in the drums and cymbals, with the bells playing a simple melody. The synth and strings are silent. The guitar plays a complex chordal pattern.

20

DRUMS

Cymbals

Guitar

Bass



23

DRUMS

Cymbals

Bells

Guitar

Bass



26

DRUMS

Cymbals

Guitar

Bass

29

DRUMS

Cymbals

Guitar

Bass



32

DRUMS

Cymbals

Perc

Synth

Guitar

Bass

Clavi

Strings

36

DRUMS

Cymbals

Perc

Synth

Bass

Clavi

Strings

This musical score page, numbered 6 and starting at measure 36, features seven staves. The top three staves are for percussion: DRUMS (a continuous eighth-note pattern), Cymbals (marked with 'x' for hits), and Perc (a pattern of eighth notes with rests). The middle three staves are for melodic instruments: Synth (treble clef, eighth-note patterns), Bass (bass clef, eighth-note patterns), and Clavi (grand staff, with the right hand playing eighth notes and the left hand playing chords). The bottom staff is for Strings (treble clef, eighth-note patterns). The score is divided into four measures by vertical bar lines.

40

DRUMS

Cymbals

Perc

Bells

Synth

Guitar

Bass

Clavi

Strings

Sweep

Detailed description: This is a multi-stem musical score for a rock or pop band. The score is divided into ten staves, each representing a different instrument. The top three staves are for percussion: Drums (with a snare and tom pattern), Cymbals (with a hi-hat pattern), and Perc (with a single note). The Bells staff is mostly silent. The Synth staff features a melodic line with some chromatic movement. The Guitar staff shows a complex chordal texture with many accidentals. The Bass staff has a steady eighth-note pattern. The Clavi and Strings staves have similar melodic lines. The Sweep staff features a melodic line with long, sustained notes.

43

DRUMS

Cymbals

Bells

Synth

Guitar

Bass

Clavi

Strings

Sweep



46

DRUMS

Cymbals

Guitar

Bass

49

DRUMS

Cymbals

Guitar

Bass



52

DRUMS

Cymbals

Bells

Guitar

Bass



55

DRUMS

Cymbals

Guitar

Bass

58

DRUMS
Cymbals
Perc
Synth
Guitar
Bass
Clavi
Strings

Detailed description: This block contains the musical score for measures 58 through 61. It features seven staves: DRUMS, Cymbals, Perc, Synth, Guitar, Bass, Clavi, and Strings. The DRUMS staff shows a complex rhythmic pattern with eighth and sixteenth notes. Cymbals are marked with 'x' symbols. Percussion has some notes with accents. Synth, Guitar, Bass, Clavi, and Strings all have melodic lines with various note values and rests.



62

DRUMS
Cymbals
Perc
Synth
Bass
Clavi
Strings

Detailed description: This block contains the musical score for measures 62 through 65. It features seven staves: DRUMS, Cymbals, Perc, Synth, Bass, Clavi, and Strings. The DRUMS staff continues with a rhythmic pattern. Cymbals and Percussion have specific markings. Synth, Bass, Clavi, and Strings have melodic lines with various note values and rests.

66

DRUMS

Cymbals

Perc

Synth

Guitar

Bass

Clavi

Strings

Sweep

Detailed description: This is a multi-stem musical score for a 4-measure section starting at measure 66. The score includes parts for Drums, Cymbals, Percussion, Synth, Guitar, Bass, Clavi (Clavichord), Strings, and Sweep. The Drums part features a complex rhythmic pattern with eighth and sixteenth notes. Cymbals are marked with 'x' symbols. Percussion has a few dotted notes. Synth, Clavi, and Strings play a melodic line with eighth and sixteenth notes. The Guitar part has a few chords with a flat sign. The Bass part has a steady eighth-note rhythm. The Sweep part has a few notes with a flat sign.

70

DRUMS
Cymbals
Perc
Synth
Bass
Clavi
Strings

Detailed description: This section of the score covers measures 70 through 73. It features a complex arrangement of instruments. The drums part includes a steady pattern of eighth notes on the snare and cymbals. The percussion part has a simple eighth-note accompaniment. The synth and bass parts play a melodic line with eighth notes and rests. The clavichord part provides a harmonic accompaniment with eighth notes. The strings part plays a melodic line with eighth notes and rests.

74

DRUMS
Cymbals
Perc
Synth
Guitar
Bass
Clavi
Strings
Sweep

Detailed description: This section of the score covers measures 74 through 77. It features a complex arrangement of instruments. The drums part continues with a steady pattern of eighth notes on the snare and cymbals. The percussion part has a simple eighth-note accompaniment. The synth and bass parts play a melodic line with eighth notes and rests. The guitar part plays a melodic line with eighth notes and rests. The clavichord part provides a harmonic accompaniment with eighth notes. The strings part plays a melodic line with eighth notes and rests. The sweep part plays a melodic line with eighth notes and rests.

77

DRUMS

Cymbals

Bells

Synth

Guitar

Bass

Clavi

Strings

Sweep



80

DRUMS

Cymbals

Synth

Guitar

Bass

Clavi

Strings

Sweep

83

DRUMS

Cymbals

Bells

Synth

Guitar

Bass

Clavi

Strings

Sweep

Detailed description: This block contains the musical notation for measures 83 through 85. The score is arranged in a grand staff with nine staves. The top two staves are for DRUMS and Cymbals. The next three staves are for Bells, Synth, and Guitar. The bottom four staves are for Bass, Clavi, Strings, and Sweep. The key signature has one flat (B-flat). The time signature is 4/4. The DRUMS part features a consistent pattern of quarter notes. The Cymbals part has a series of 'x' marks indicating cymbal hits. The Bells, Synth, Clavi, and Strings parts are mostly silent, with some initial notes in the first measure. The Guitar part plays a complex chordal pattern with various accidentals. The Bass part plays a steady eighth-note line. The Sweep part has a few notes in the first measure, including a long note with a fermata.



86

DRUMS

Cymbals

Bells

Guitar

Bass

Sweep

Detailed description: This block contains the musical notation for measures 86 through 88. The score is arranged in a grand staff with six staves. The top two staves are for DRUMS and Cymbals. The next three staves are for Bells, Guitar, and Bass. The bottom staff is for Sweep. The key signature has one flat (B-flat). The time signature is 4/4. The DRUMS part continues with a consistent pattern of quarter notes. The Cymbals part has a series of 'x' marks indicating cymbal hits. The Bells part is mostly silent, with some notes in the second measure. The Guitar part continues with a complex chordal pattern. The Bass part continues with a steady eighth-note line. The Sweep part has a few notes in the first measure, including a long note with a fermata.

89

DRUMS

Cymbals

Bells

Guitar

Bass

Strings

92

DRUMS

Cymbals

Guitar

Bass

Strings

95

DRUMS

Cymbals

Guitar

Bass

Strings

98

DRUMS

Cymbals

Perc

Synth

Guitar

Bass

Clavi

Strings



102

DRUMS

Cymbals

Perc

Synth

Bass

Clavi

Strings

106

DRUMS

Cymbals

Perc

Synth

Guitar

Bass

Clavi

Strings

Detailed description: This musical score page contains measures 106 through 109. The score is arranged in a vertical stack of staves. The top three staves are for percussion: DRUMS (snare and kick), Cymbals, and Perc (hi-hat). The next three staves are for melodic instruments: Synth (treble clef), Guitar (treble clef), and Bass (bass clef). The bottom three staves are for keyboard and strings: Clavi (grand staff) and Strings (treble clef). The music is in 4/4 time. The drum part features a consistent snare and kick pattern. The synth and strings play a melodic line with eighth and sixteenth notes. The guitar part consists of a few chords in the first measure, followed by rests. The bass line provides a steady accompaniment.

110

DRUMS
Cymbals
Perc
Synth
Bass
Clavi
Strings

Detailed description: This section of the score covers measures 110 to 113. The drums part features a consistent pattern of eighth notes. Cymbals are used for accents, with a star symbol indicating a specific effect. The percussion part has a simple melodic line. The synth part plays a rhythmic pattern of eighth notes. The bass part has a steady eighth-note accompaniment. The clavichord part has a melodic line in the right hand and a bass line in the left hand. The strings part provides harmonic support with a melodic line.

114

DRUMS
Cymbals
Perc
Synth
Guitar
Bass
Clavi
Strings
Sweep

Detailed description: This section of the score covers measures 114 to 117. The drums part continues with the same eighth-note pattern. Cymbals are used for accents. The percussion part has a simple melodic line. The synth part plays a rhythmic pattern of eighth notes. The guitar part features a complex rhythmic pattern with many sixteenth notes and rests. The bass part has a steady eighth-note accompaniment. The clavichord part has a melodic line in the right hand and a bass line in the left hand. The strings part provides harmonic support with a melodic line. The sweep part has a melodic line with a sweep effect.

117

DRUMS

Cymbals

Bells

Synth

Guitar

Bass

Clavi

Strings

Sweep



122

DRUMS

Cymbals

Perc

Guitar

Bass

Sweep

125

DRUMS
Cymbals
Perc
Bells
Guitar
Bass
Sweep

Detailed description: This musical score covers measures 125 to 127. The DRUMS part features a consistent eighth-note pattern. Cymbals are used for accents, with a star symbol indicating a specific effect. Percussion includes a half-note chord in measures 125 and 127. Bells play a simple eighth-note pattern. The GUITAR part consists of a complex, rhythmic chordal texture. The BASS line provides a steady eighth-note accompaniment. The SWEEP part features a melodic line with a long, sustained note in measure 126.



128

DRUMS
Cymbals
Perc
Bells
Guitar
Bass
Strings
Sweep

Detailed description: This musical score covers measures 128 to 130. The DRUMS part continues with the eighth-note pattern. Cymbals have a different rhythmic pattern, including a star symbol. Percussion features a half-note chord in measure 129. Bells play a simple eighth-note pattern. The GUITAR part maintains its complex chordal texture. The BASS line continues with eighth notes. The STRINGS part enters in measure 129 with a complex chordal texture. The SWEEP part continues with its melodic line, including a long, sustained note in measure 129.

131

DRUMS

Cymbals

Perc

Bells

Guitar

Bass

Strings

Sweep



134

DRUMS

Cymbals

Perc

Guitar

Bass

Strings

Sweep

137

DRUMS

Cymbals

Perc

Bells

Guitar

Bass

Strings

Sweep



140

DRUMS

Cymbals

Perc

Bells

Guitar

Bass

Strings

Sweep

143

The image displays a musical score for a multi-instrument ensemble. The score is organized into seven horizontal staves, each labeled with an instrument name on the left. The instruments are: DRUMS, Cymbals, Perc, Bells, Guitar, Bass, and Strings. The DRUMS staff uses a drum set icon and contains a rhythmic pattern of eighth and quarter notes with a final half-note. The Cymbals staff uses a cymbal icon and contains a series of 'x' marks representing cymbal hits. The Perc staff uses a hand drum icon and contains a few notes with a fermata. The Bells staff uses a bell icon and contains a few notes. The Guitar staff uses a guitar icon and contains a complex rhythmic pattern with many sixteenth notes and chords. The Bass staff uses a bass clef and contains a simple melodic line. The Strings staff uses a string clef and contains a complex rhythmic pattern with many sixteenth notes and chords. The score is divided into three measures by vertical bar lines.

DRUMS

Madonna - Material Girl

♩ = 137,000061



5



9



13



17



21



25



29



33



37



V.S.

41



45



49



53



57



61



65



69



73



77



81



85



89



93



97



101



105



109



113



116



120



124



128



132



136



140



143



Cymbals

Madonna - Material Girl

♩ = 137,000061

6

12

17

22

27

32

37

42

47

V.S.

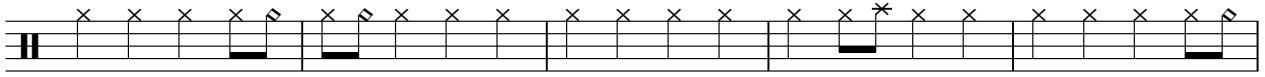
2

Cymbals

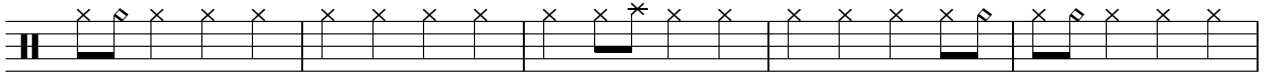
52



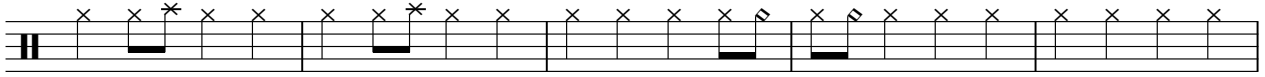
57



62



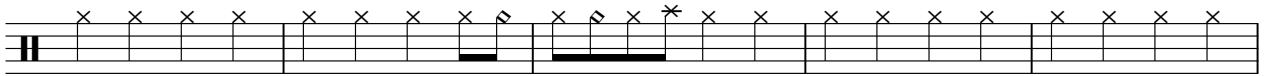
67



72



77



82



87



92



97



102



107



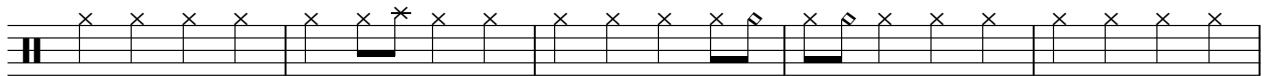
112



117



124



129



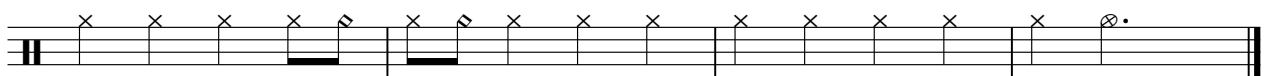
134



139



142



♩ = 137,000061

4/4

2

27

34

39

19

62

68

74

23

101

106

111

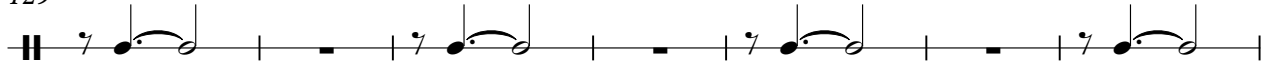
8

123

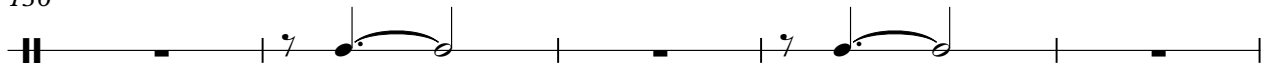
2

Perc

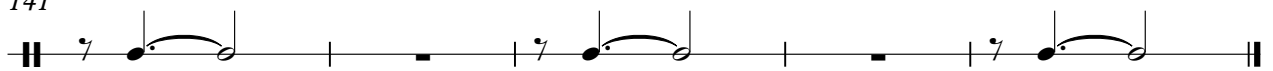
129



136



141



Bells

Madonna - Material Girl

♩ = 137,000061

12 3 7

25

16

45

7 26

80

3 3 3

91

29 3

126

3 3 3

137

3 3

Madonna - Material Girl

Synth

♩ = 137,000061

8

12

16

15

34

38

42

3

15

60

64

68

72

V.S.

76

80

84

15

102

106

110

114

117

3 **28**

Madonna - Material Girl

Guitar

♩ = 137,000061

4

7

10

13

16

19

22

25

28

31

6

40

43

46

49

52

55

58

67

76

79

82



85



88



91



94



97



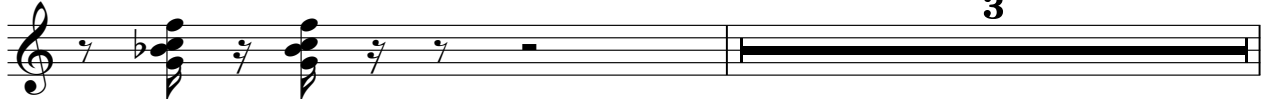
106



115



117



121



124



127



130



133



136



139



142



144



Madonna - Material Girl

Bass

♩ = 137,000061



V.S.

41



45



49



53



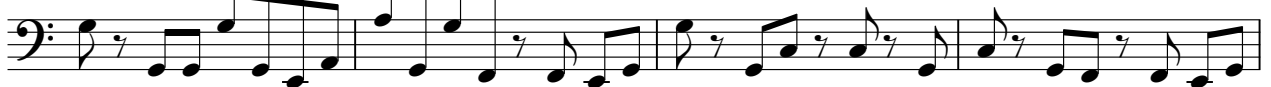
57



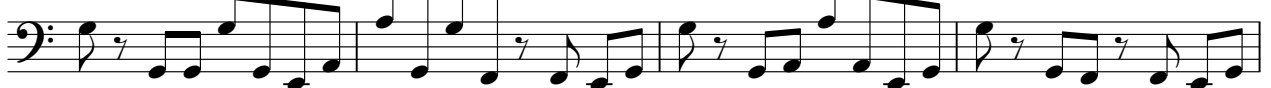
61



65



69



73



77



81



85



89



93



97



101



105



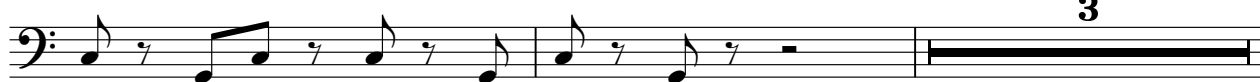
109



113



116



3

121



125



129



133



137



141



143



Madonna - Material Girl

Clavi

♩ = 137,000061

8

12

15

15

35

39

42

3

15

15

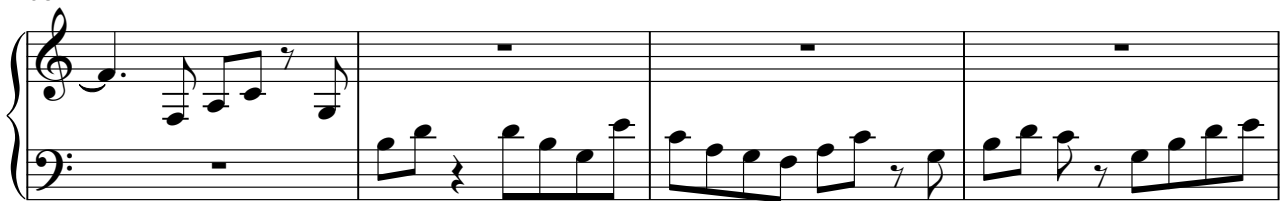
60



64



68



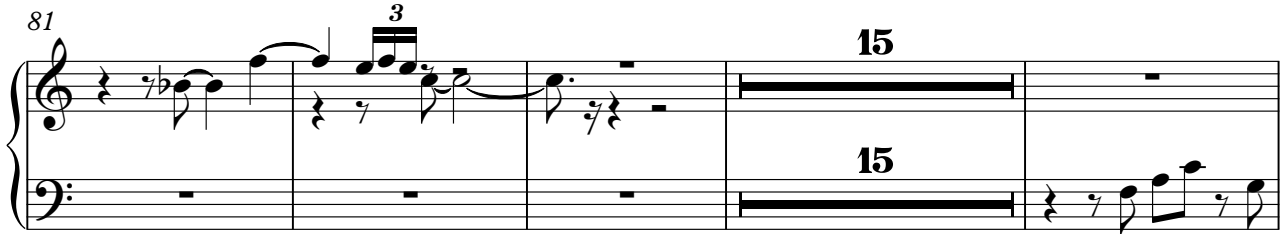
72



76



81



100



104



108

112

116

Madonna - Material Girl

Strings

♩ = 137,000061

8

12

15

17

35

39

43

61

65

69

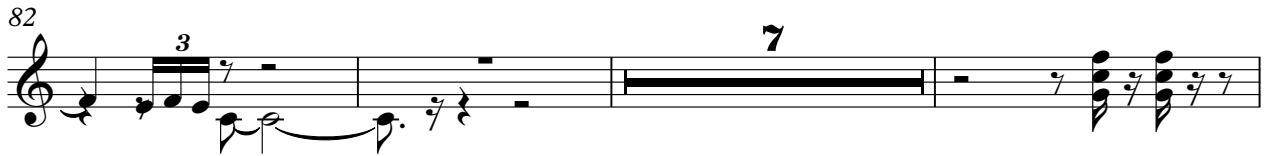
73

V.S.

77



82



92



95



98



101



105



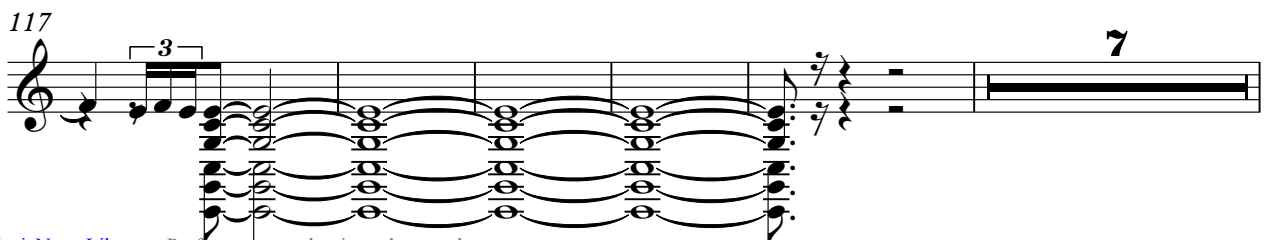
109



113



117



129



132



135



138



141



143



Madonna - Material Girl

Sweep

♩ = 137,000061

4

9

14 23

41 23

68 6

78

83 2

89 25

118 2

125 2 2

2

Sweep

133



138

