

Next Episode - Dr Dre poly

♩ = 98,000145

Musical score for the first system of 'Next Episode' by Dr Dre. The score is in 4/4 time and features the following instruments:

- Baroque Trumpet:** Treble clef, playing sustained chords.
- Trombone:** Bass clef, playing sustained chords.
- Percussion:** Snare drum, playing a rhythmic pattern with 'x' marks indicating hits.
- Jazz Guitar:** Treble clef, playing a sustained chord.
- Synth Bass:** Bass clef, playing a melodic line.
- Seashore:** Snare drum, playing a melodic line.

The score includes a tempo marking of ♩ = 98,000145 and a software version 'PsmPlayer V3.30'.

Musical score for the second system of 'Next Episode' by Dr Dre. The score is in 4/4 time and features the following instruments:

- Bar. Tpt.:** Treble clef, playing sustained chords.
- Tbn.:** Bass clef, playing sustained chords.
- Perc.:** Snare drum, playing a rhythmic pattern with 'x' marks indicating hits.
- S. Bass:** Bass clef, playing a melodic line.
- Seash.:** Snare drum, playing a melodic line.

The score includes a measure number '4' at the beginning of the first staff.

7

Bar. Tpt.
Tbn.
Perc.
S. Bass
Seash.

Detailed description: This system covers measures 7 and 8. The Baritone Trumpet and Trombone parts play block chords in the left hand and single notes in the right hand. The Percussion part features a snare drum pattern with eighth notes and a cymbal. The Sub Bass part has a melodic line with a long note in measure 8. The Seashell part plays a rhythmic eighth-note pattern.

9

Perc.
J. Gtr.
S. Bass

Detailed description: This system covers measures 9 and 10. The Percussion part has a complex snare and cymbal pattern. The Jazz Guitar part plays a complex chordal accompaniment with many accidentals. The Sub Bass part has a simple melodic line with rests.

11

Perc.
J. Gtr.
S. Bass

Detailed description: This system covers measures 11 and 12. The Percussion part continues with a complex snare and cymbal pattern. The Jazz Guitar part plays a complex chordal accompaniment. The Sub Bass part has a simple melodic line with rests.

13

Perc. J. Gtr. S. Bass

This system contains measures 13 and 14. The Percussion part features a complex rhythmic pattern with accents and slurs. The J. Gtr. part has a melodic line with various accidentals and a consistent strumming pattern. The S. Bass part provides a steady bass line with occasional melodic accents.

15

Bar. Tpt. Tbn. Perc. J. Gtr. S. Bass Seash.

This system contains measures 15 and 16. The Bar. Tpt. and Tbn. parts are mostly silent, indicated by horizontal lines. The Perc. part continues with its rhythmic pattern. The J. Gtr. part has a melodic line with a slur in measure 16. The S. Bass part has a bass line with some melodic movement. The Seash. part is silent.

17

Perc. J. Gtr. S. Bass

This system contains measures 17 and 18. The Perc. part continues with its rhythmic pattern. The J. Gtr. part has a melodic line with various accidentals and a consistent strumming pattern. The S. Bass part provides a steady bass line with occasional melodic accents.

19

Perc. J. Gtr. S. Bass

This system contains three staves. The Percussion staff (top) features a complex rhythmic pattern with 'x' marks above the staff. The J. Gtr. staff (middle) has a treble clef and contains a melodic line with various accidentals. The S. Bass staff (bottom) has a bass clef and contains a bass line with notes and rests.

21

Perc. J. Gtr. S. Bass

This system continues the musical score with three staves. The Percussion staff (top) has a rhythmic pattern with 'x' marks. The J. Gtr. staff (middle) continues the melodic line. The S. Bass staff (bottom) continues the bass line.

23

Bar. Tpt. Tbn. Perc. J. Gtr. S. Bass Seash.

This system contains six staves. The Bar. Tpt. and Tbn. staves (top two) are empty. The Perc. staff (third from top) has a rhythmic pattern with 'x' marks. The J. Gtr. staff (fourth from top) has a treble clef and contains a melodic line. The S. Bass staff (fifth from top) has a bass clef and contains a bass line. The Seash. staff (bottom) is empty.

25

Perc. J. Gtr. S. Bass

This system contains measures 25 through 28. The Percussion part features a consistent rhythmic pattern of eighth notes with 'x' marks above them, indicating muted notes. The J. Gtr. part consists of a series of chords, each marked with a slash and a tilde (~), indicating muted notes. The S. Bass part features a melodic line with eighth notes and rests, including a key signature change from one flat to one sharp.

27

Perc. J. Gtr. S. Bass

This system contains measures 27 through 30. The Percussion part continues with the same eighth-note rhythmic pattern. The J. Gtr. part continues with muted chords. The S. Bass part continues with the melodic line, showing further chromatic movement and a key signature change to two sharps.

29

Perc. J. Gtr. S. Bass

This system contains measures 29 through 32. The Percussion part maintains the eighth-note rhythmic pattern. The J. Gtr. part continues with muted chords. The S. Bass part continues with the melodic line, ending with a key signature change to two sharps.

31

Bar. Tpt.

Tbn.

Perc.

J. Gtr.

S. Bass

Seash.

33

Bar. Tpt.

Tbn.

Perc.

S. Bass

Seash.

36

Bar. Tpt.

Tbn.

Perc.

S. Bass

Seash.

39

Bar. Tpt.

Tbn.

Perc.

S. Bass

Seash.

41

Perc.

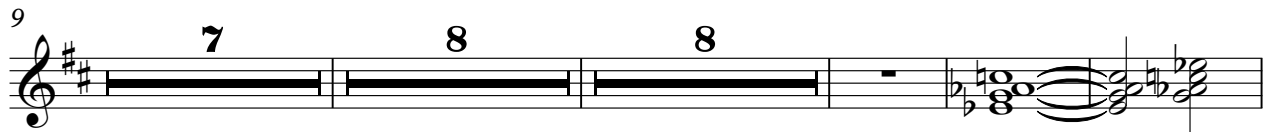
J. Gtr.

S. Bass

Baroque Trumpet

Next Episode - Dr Dre poly

♩ = 98,000145



Trombone

Next Episode - Dr Dre poly

♩ = 98,000145

1 2 3 4 5

9

7 8 8

10

34

11 12 13

38

2

14 15 16

Next Episode - Dr Dre poly

Percussion

♩ = 98,000145
PsmPlayer V3.30

6

11

15

18

22

25

29

32

37

V.S.

2

Percussion

40

Musical notation for Percussion, measure 40. The staff shows a sequence of notes with 'x' marks above them, indicating a specific rhythmic pattern. The notation includes a treble clef, a key signature of one flat, and a common time signature. The notes are quarter notes, and the 'x' marks are placed above the notes, suggesting a specific rhythmic pattern or articulation. The measure is divided into four beats, with the first beat containing a quarter note with an 'x' mark, and the subsequent three beats each containing a quarter note with an 'x' mark. The notes are G4, A4, B4, and C5, respectively.

♩ = 98,000145
8

2

Jazz Guitar

30

32

41

Next Episode - Dr Dre poly

Synth Bass

♩ = 98,000145



Seashore

Next Episode - Dr Dre poly

♩ = 98,000145

2

7

7

7

8

24

8

3

7

37

7

2