

Nilson e Banda - Remix Sertanejo Abertura de Show

♩ = 100,000000 ♩ = 100,000000

Percussion

Enviada por Nilson

Jazz Guitar

5-string Electric Bass

Solo

Solo

Se Desconhecer o Show, Remaneje para Nilson@cbnet.psi.br



Perc.

J. Gtr.

Kora

E. Bass

Solo

Solo

4

Sequencer desconhecido  
Sequencer desconhecido

6

Bar. Tpt.

Perc.

J. Gtr.

Kora

E. Bass

Solo

Solo



8

Bar. Tpt.

Perc.

J. Gtr.

E. Bass

10  $\text{♩} = 125,000000$

Bar. Tpt. Perc. J. Gtr. E. Bass Band.



12  $\text{♩} = 125,000000$

Perc. J. Gtr. E. Bass Band. Band.

14

Perc.

J. Gtr.

E. Bass

Band.

Band.



15

Perc.

J. Gtr.

E. Bass

Band.

Band.

16

Perc.

J. Gtr.

E. Bass

Band.

Band.



18

Perc.

J. Gtr.

E. Bass

Band.

Band.

6

Tempo: ♩ = 156,000153

20

Perc.

J. Gtr.

E. Bass

Band.

Band.



22

Perc.

J. Gtr.

E. Bass

Band.

Band.

24

Perc. J. Gtr. E. Bass Band. Band.

This musical system covers measures 24 and 25. It features five staves: Percussion (Perc.), J. Gtr. (Jazz Guitar), E. Bass (Electric Bass), and two Band staves. The Percussion part consists of a steady eighth-note pattern. The J. Gtr. part features a series of chords, with a long note in measure 25. The E. Bass part has a simple line of notes. The Band part is split into two staves, with the upper staff playing chords and the lower staff playing a bass line. A double bar line is present at the end of measure 25.



26

Perc. J. Gtr. E. Bass Band. Band.

This musical system covers measures 26 and 27. It features five staves: Percussion (Perc.), J. Gtr. (Jazz Guitar), E. Bass (Electric Bass), and two Band staves. The Percussion part continues with the same eighth-note pattern. The J. Gtr. part has chords, with a sharp sign indicating a key change or modulation. The E. Bass part has a line of notes. The Band part is split into two staves, with the upper staff playing chords and the lower staff playing a bass line.

28  $\text{♩} = 136,000153$

Perc.

J. Gtr.

E. Bass

Band.

Band.

Band.

$\text{♩} = 136,000153$



30  $\text{♩} = 136,000153$

Perc.

J. Gtr.

E. Bass

Band.

$\text{♩} = 136,000153$



32

Perc. J. Gtr. E. Bass Band.

Detailed description: This system contains measures 32 and 33. The Percussion part features a steady eighth-note pattern. The J. Gtr. part consists of a series of chords with rhythmic flags. The E. Bass part has a melodic line with some rests. The Band part features a melodic line with a triplet of eighth notes in measure 33.



34

Perc. J. Gtr. E. Bass Band.

Detailed description: This system contains measures 34 and 35. The Percussion part continues with eighth notes. The J. Gtr. part has a more complex rhythmic pattern with chords. The E. Bass part has a melodic line with a flat sign in measure 35. The Band part features a melodic line with multiple triplet markings in measure 35.

36

Perc. 

J. Gtr. 

E. Bass 

Band. 



37

Perc. 

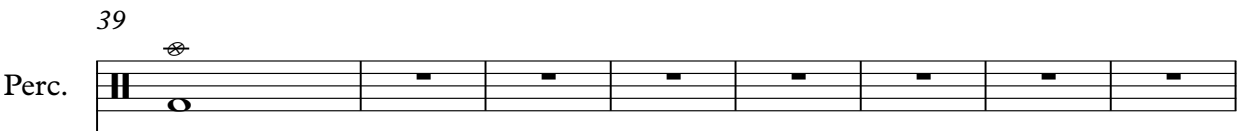
J. Gtr. 

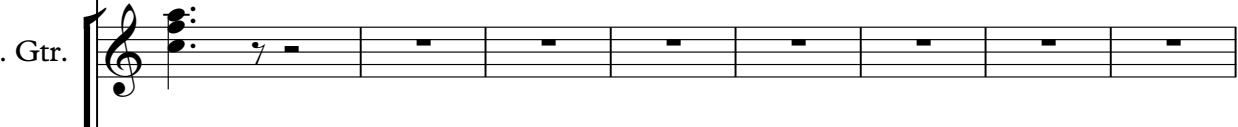
E. Bass 

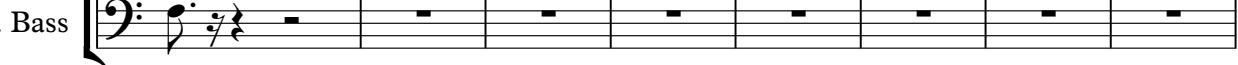
Band. 



39

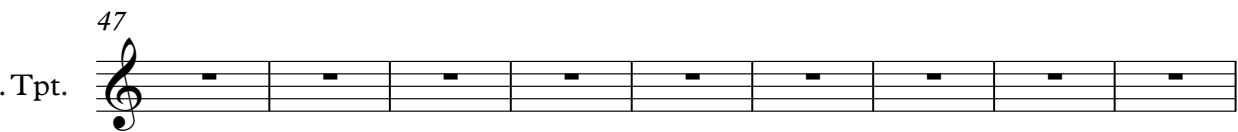
Perc. 


J. Gtr. 

E. Bass 




47

Bar. Tpt. 

56  
Bar. Tpt. 



65  
Bar. Tpt. 



74  
Bar. Tpt. 



83  $\text{♩} = 125,000000$   
Bar. Tpt. 



92  
Bar. Tpt. 




101  
Bar. Tpt. 




110  
Bar. Tpt. 




119  $\text{♩} = 136,000153$   
Bar. Tpt. 



128  
Bar. Tpt. 



137  
Bar. Tpt. 




146  
Bar. Tpt. 

155  
Bar. Tpt. 



164  
Bar. Tpt. 



173  
Bar. Tpt. 




182  
Bar. Tpt. 




191  
Bar. Tpt. 



200  
Bar. Tpt. 




209  $\text{♩} = 156,000153$   
Bar. Tpt. 




218  
Bar. Tpt. 




227  
Bar. Tpt. 




236  
Bar. Tpt. 



245  
Bar. Tpt. 

254  
Bar. Tpt. 




263  
Bar. Tpt. 




272  
Bar. Tpt. 




281  
Bar. Tpt. 




290  
Bar. Tpt. 



299  
Bar. Tpt. 



308  
Bar. Tpt. 



314  
Bar. Tpt. 

♩ = 136,000153

Baroque Trumpet

Nilson e Banda - Remix Sertanejo Abertura de Show

♪ = 100,000000 ♪ = 100,000000

5

6

9

♪ = 125,000000 ♪ = 125,000000 ♪ = 156,000153

8

21

♪ = 156,000153 ♪ = 136,000153 ♪ = 136,000153 ♪ = 125,000000

8 2 56 38

125

♪ = 136,000153 ♪ = 156,000153 ♪ = 136,000153

89 104

Sequencer desconhecido  
Sequencer desconhecido

# Nilson e Banda - Remix Sertanejo Abertura de Show

## Percussion

♩ = 100,000000 = 100,000000

6

10

♩ = 125,000000

♩ = 125,000000

13

15

17

♩ = 156,000153

♩ = 156,000153

20

23

27

♩ = 136,000153

30

♩ = 136,000153

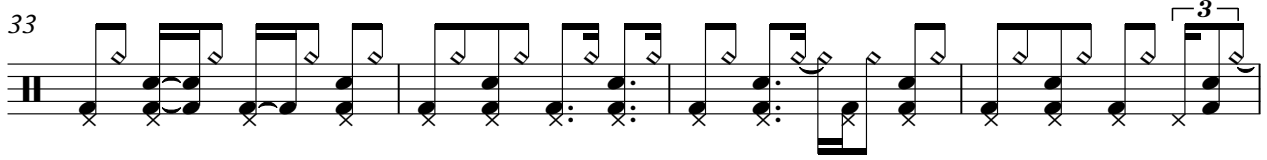
Sequencer desconhecido  
Sequencer desconhecido

V.S.

2

Percussion

33



A musical staff with a treble clef and a key signature of one flat. The staff contains a sequence of notes and rests, with 'x' marks below the notes indicating percussive hits. The notes are mostly eighth and sixteenth notes. A triplet of eighth notes is marked with a '3' at the end of the staff.

37



A musical staff with a treble clef and a key signature of one flat. The staff contains notes and rests. There are two triplet markings with the number '3' below them. A section of the staff is marked with a large '47' above it, indicating a measure rest.

87 ♪ = 125,000000

♪ = 136,000153

38

89

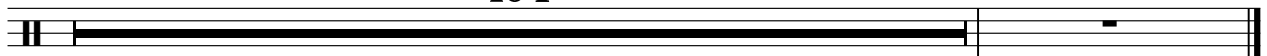


A musical staff with a treble clef and a key signature of one flat. The staff contains two long horizontal lines representing measure rests. The first rest is marked with '38' above it and the second with '89' above it.

214 ♪ = 156,000153

♪ = 136,000153

104



A musical staff with a treble clef and a key signature of one flat. The staff contains two long horizontal lines representing measure rests. The first rest is marked with '104' above it.



♩ = 100,000000 ♩ = 100,000000

Enviada por Nilson

Sequencer desconhecido Sequencer desconhecido Sequencer desconhecido  
Email: [Sequencerdesconhecido@cbnet.psi.br](mailto:Sequencerdesconhecido@cbnet.psi.br)

6

11 ♩ = 125,000000 ♩ = 125,000000

15

18 ♩ = 156,000153

21 ♩ = 156,000153

25 ♩ = 136,000153

30 ♩ = 136,000153

34

37

Sequencer desconhecido  
Sequencer desconhecido

V.S.

2

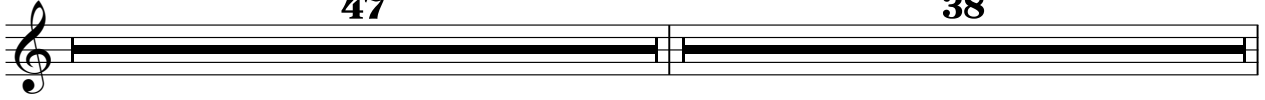
Jazz Guitar

♩ = 125,000000

40

**47**

**38**



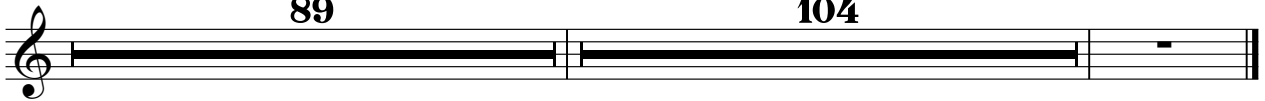
125 ♩ = 136,000153

**89**

♩ = 156,000153

**104**

♩ = 136,000153



♪ = 100,000000 ♪ = 100,000000

2

6

3

♪ = 125,000000

12

♪ = 125,000000 ♪ = 156,000153 ♪ = 136,000153 ♪ = 136,000153

8

8

2

56

87

♪ = 125,000000

38

♪ = 136,000153

89

214

♪ = 156,000153

104

♪ = 136,000153

Sequencer desconhecido  
Sequencer desconhecido

5-string Electric Bass

Nilson e Banda - Remix Sertanejo Abertura de Show

♩ = 100,000000 ♩ = 100,000000

6

11 ♩ = 125,000000

♩ = 125,000000

14

17

20 ♩ = 156,000153

♩ = 156,000153

24

28

♩ = 136,000153

♩ = 136,000153

32

36

Sequencer desconhecido  
Sequencer desconhecido

V.S.

2

5-string Electric Bass

40

♩ = 125,000000

**47**

**38**



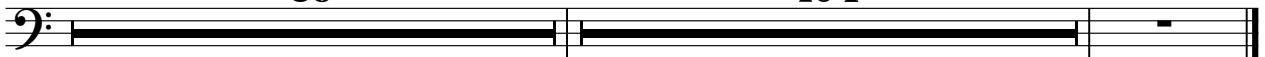
125 ♩ = 136,000153

♩ = 156,000153

♩ = 136,000153

**89**

**104**



Nilson e Banda - Remix Sertanejo Abertura de Show

Bandoneon

♩ = 100,000000 ♩ = 100,000000 ♩ = 125,000000 ♩ = 125,000000

9

13

15

17

19

♩ = 156,000153 ♩ = 156,000153 ♩ = 136,000153

8 2

31

♩ = 136,000153 ♩ = 125,000000

56 38

125

♩ = 136,000153 ♩ = 156,000153 ♩ = 136,000153

89 104

104

Sequencer desconhecido  
Sequencer desconhecido

Bandoneon

Nilson e Banda - Remix Sertanejo Abertura de Show

♪ = 100,000000    ♪ = 100,000000    ♪ = 125,000000    ♪ = 125,000000

9

13

16

♪ = 156,000153

21

♪ = 156,000153    ♪ = 136,000153    ♪ = 136,000153    ♪ = 125,000000

8    2    56    38

125

♪ = 136,000153    ♪ = 156,000153    ♪ = 136,000153

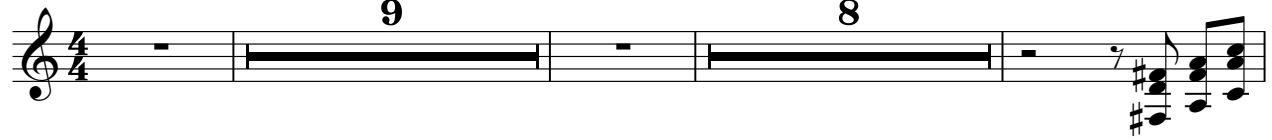
89    104

Sequencer desconhecido  
Sequencer desconhecido

Bandoneon

Nilson e Banda - Remix Sertanejo Abertura de Show

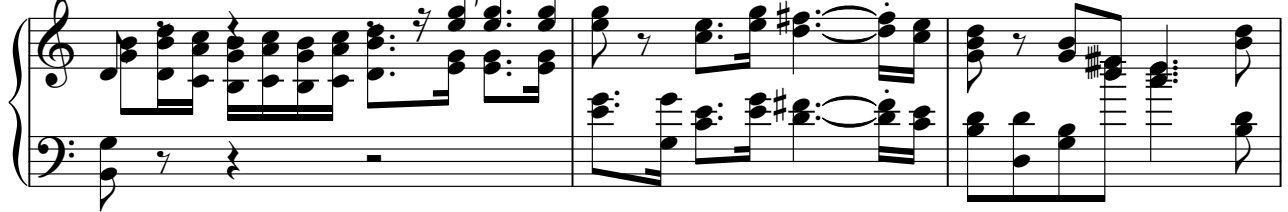
♪ = 100,000000   ♪ = 100,000000   ♪ = 125,000000   ♪ = 125,000000   ♪ = 156,000153



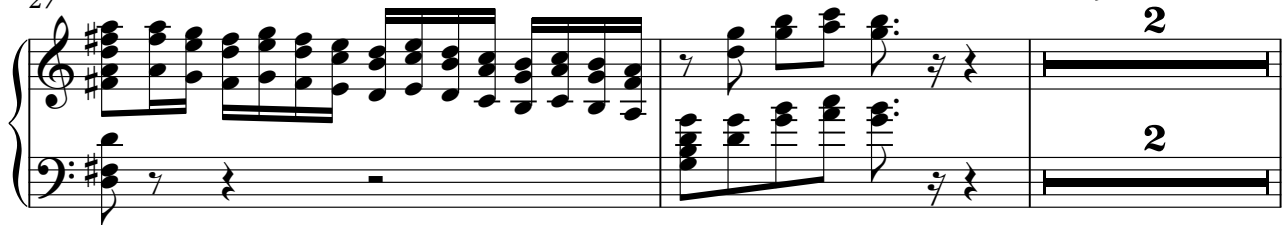
21 ♪ = 156,000153




24



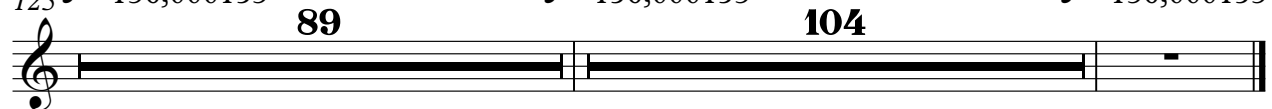
27 ♪ = 136,000153



31 ♪ = 136,000153   ♪ = 125,000000



125 ♪ = 136,000153   ♪ = 156,000153   ♪ = 136,000153



Sequencer desconhecido  
Sequencer desconhecido



# Nilson e Banda - Remix Sertanejo Abertura de Show

Bandoneon

♩ = 100,000000   ♩ = 100,000000   ♩ = 125,000000   ♩ = 125,000000   ♩ = 156,000153

9 8

This system consists of a single treble clef staff in 4/4 time. It contains two measures of rests. The first measure is a whole rest labeled '9', and the second measure is a whole rest labeled '8'.

♩ = 156,000153

21

This system is a bass clef staff starting at measure 21. It contains six measures of music. Each measure begins with a quarter rest, followed by a quarter note chord. The chords are: G2-B2-D3 (measure 21), G2-B2-D3 (measure 22), G2-B2-D3 (measure 23), G2-B2-D3 (measure 24), G2-B2-D3 (measure 25), and G2-B2-D3 (measure 26).

24

This system is a bass clef staff starting at measure 24. It contains six measures of music. Each measure begins with a quarter rest, followed by a quarter note chord. The chords are: G2-B2-D3 (measure 24), G2-B2-D3 (measure 25), G2-B2-D3 (measure 26), G2-B2-D3 (measure 27), G2-B2-D3 (measure 28), and G2-B2-D3 (measure 29).

♩ = 136,000153

27

2

This system is a bass clef staff starting at measure 27. It contains six measures of music. Each measure begins with a quarter rest, followed by a quarter note chord. The chords are: G2-B2-D3 (measure 27), G2-B2-D3 (measure 28), G2-B2-D3 (measure 29), G2-B2-D3 (measure 30), G2-B2-D3 (measure 31), and a whole rest labeled '2' (measure 32).

♩ = 136,000153   ♩ = 125,000000

31

56 38

This system is a treble clef staff starting at measure 31. It contains two measures of rests. The first measure is a whole rest labeled '56', and the second measure is a whole rest labeled '38'.

♩ = 136,000153   ♩ = 156,000153   ♩ = 136,000153

125

89 104

This system is a treble clef staff starting at measure 125. It contains three measures of rests. The first measure is a whole rest labeled '89', the second measure is a whole rest labeled '104', and the third measure is a whole rest.

Sequencer desconhecido  
Sequencer desconhecido

Nilson e Banda - Remix Sertanejo Abertura de Show

Bandoneon

$\text{♩} = 100,0000000000,000000$       $\text{♩} = 125,0000000000,000000$       $\text{♩} = 156,000153$       $\text{♩} = 156,000153$

29  $\text{♩} = 136,000153$       $\text{♩} = 136,000153$

32

35

36

39  $\text{♩} = 125,000000$

48     38

125  $\text{♩} = 136,000153$       $\text{♩} = 156,000153$       $\text{♩} = 136,000153$

89     104

Sequencer desconhecido  
Sequencer desconhecido

Nilson e Banda - Remix Sertanejo Abertura de Show

Solo

♩ = 100,000000 ♩ = 100,000000

6 ♩ = 125,000000 ♩ = 125,000000 ♩ = 156,000153

21 ♩ = 156,000153 ♩ = 136,000153 ♩ = 136,000153 ♩ = 125,000000

125 ♩ = 136,000153 ♩ = 156,000153 ♩ = 136,000153

Sequencer desconhecido  
Sequencer desconhecido

Solo

Nilson e Banda - Remix Sertanejo Abertura de Show

$\text{♩} = 100,000000 = 100,000000$

7  $\text{♩} = 125,000000 = 125,000000$   $\text{♩} = 156,000153 = 156,000153$   $\text{♩} = 136,000153$

4 8 8 2

31  $\text{♩} = 136,000153$   $\text{♩} = 125,000000$

56 38

125  $\text{♩} = 136,000153$   $\text{♩} = 156,000153$   $\text{♩} = 136,000153$

89 104

Sequencer desconhecido  
Sequencer desconhecido