

# Nirvana - Smells Like Teen Spirit 1

♩ = 120,000000

HARPSICHRD

This system shows the piano accompaniment for the first four measures of the song. The music is written for a grand piano with two staves: a treble clef staff and a bass clef staff. The key signature is one flat (Bb), and the time signature is 4/4. The first two measures are in 4/4, and the last two measures change to 3/4. The piano part consists of chords and a rhythmic pattern in the bass line.

4

DRUMS

DRUMS: A single staff with a drum head icon at the beginning, showing a rhythmic pattern of quarter and eighth notes.

DISTORTION

DISTORTION: A three-line staff labeled 'T', 'A', and 'B'. It contains a few notes in the B string, specifically in the 3rd, 4th, and 5th frets.

HARPSICHRD

HARPSICHRD: Piano accompaniment for measures 4 through 7. It continues the chordal and bass line from the first system.

6

DRUMS

DRUMS: A single staff with a drum head icon at the beginning, showing a rhythmic pattern of quarter and eighth notes.

DISTORTION

T					3	3			1	1	1		1	1	2	2
A	3	3	3		3	3	3	3	3	1	1		1	1	1	1
B	3	3	3		3	3	3	3	3	1	1		1	1	4	4
	1	1	1		1	1	1	1	1				4	4	4	4

OVERDRIVE

T					3	3			1	1	1		1	1	2	2
A	3	3	3		3	3	3	3	3	1	1		1	1	1	1
B	3	3	3		3	3	3	3	3	1	1		1	1	4	4
	1	1	1		1	1	1	1	1				4	4	4	4

FINGERDBAS

FINGERDBAS: A bass line with notes and fret numbers (1, 2, 3, 4) written below the staff. The notes are in the Bb major scale, including the key signature change.

8

DRUMS

DISTORTION

OVERDRIVE

FINGERDBAS

8

DRUMS

DISTORTION

OVERDRIVE

FINGERDBAS

10

DRUMS

DISTORTION

OVERDRIVE

FINGERDBAS

10

DRUMS

DISTORTION

OVERDRIVE

FINGERDBAS

12

DRUMS

DISTORTION

OVERDRIVE

FINGERDBAS

HARPSICHRD

12

DRUMS

DISTORTION

OVERDRIVE

FINGERDBAS

HARPSICHRD

15

DRUMS

FINGERDBAS

HARPSICHRD

Detailed description: This system contains three staves. The top staff is labeled 'DRUMS' and features a drum set icon followed by a rhythmic pattern of eighth notes. The middle staff is labeled 'FINGERDBAS' and is in bass clef, showing a melodic line with various accidentals. The bottom staff is labeled 'HARPSICHRD' and is in treble clef, showing a sparse melodic line with rests.

18

DRUMS

FINGERDBAS

CHOIR AAHS

HARPSICHRD

Detailed description: This system contains four staves. The top staff is 'DRUMS' with a rhythmic pattern. The second staff is 'FINGERDBAS' in bass clef with a melodic line. The third staff is 'CHOIR AAHS' in treble clef, featuring vocal notes with lyrics. The bottom staff is 'HARPSICHRD' in treble clef with a sparse melodic line.

21

DRUMS

FINGERDBAS

CHOIR AAHS

HARPSICHRD

Detailed description: This system contains four staves. The top staff is 'DRUMS' with a rhythmic pattern. The second staff is 'FINGERDBAS' in bass clef with a melodic line. The third staff is 'CHOIR AAHS' in treble clef, featuring vocal notes with lyrics. The bottom staff is 'HARPSICHRD' in treble clef with a sparse melodic line.

DRUMS

FINGERDBAS

CHOIR AAHS

HARPSICHRD

DRUMS

DISTORTION

OVERDRIVE

FINGERDBAS

CHOIR AAHS

28

DRUMS

DISTORTION

OVERDRIVE

FINGERDBAS

CHOIR AAHS

Detailed description: This block contains musical notation for measures 28 and 29. It features five staves: DRUMS (drum notation), DISTORTION (guitar tablature with fret numbers 1, 3, 3, 1), OVERDRIVE (guitar tablature with fret number 1), FINGERDBAS (bass line in bass clef), and CHOIR AAHS (vocal line in treble clef with lyrics 'AAHS').

30

DRUMS

DISTORTION

OVERDRIVE

FINGERDBAS

CHOIR AAHS

Detailed description: This block contains musical notation for measures 30 and 31. It features five staves: DRUMS (drum notation), DISTORTION (guitar tablature with fret numbers 1, 3, 3, 1), OVERDRIVE (guitar tablature with fret number 1), FINGERDBAS (bass line in bass clef), and CHOIR AAHS (vocal line in treble clef with lyrics 'AAHS').

32

DRUMS

DISTORTION

OVERDRIVE

FINGERDBAS

CHOIR AAHS

Detailed description: This block contains the musical notation for measures 32 and 33. The Drums staff shows a consistent rhythmic pattern of eighth notes. The Distortion and Overdrive staves include guitar tablature with fret numbers (1, 3) and string numbers (A, B). The Fingerdbas staff is in bass clef, and the Choir Aahs staff is in treble clef, both featuring melodic lines with various accidentals.

34

DRUMS

DISTORTION

OVERDRIVE

FINGERDBAS

CHOIR AAHS

Detailed description: This block contains the musical notation for measures 34 and 35. The Drums staff continues with eighth notes. The Distortion and Overdrive staves feature more complex guitar tablature, including fret numbers 1, 2, 3, and 4. The Fingerdbas and Choir Aahs staves continue their respective melodic parts.

36

DRUMS

DISTORTION

T												2	2	
A	3	3	3	3	3	3	3	3	1	1	1	1	1	1
B	3	3	3	3	3	3	1	1	3	4	4	4	4	4
	1	1	1	1	1	1	1	1	1	4	4	4	4	4

OVERDRIVE

T												2	2	
A	3	3	3	3	3	3	3	3	3	1	1	1	1	1
B	3	3	3	3	3	3	3	1	1	3	4	4	4	4
	1	1	1	1	1	1	1	1	1	1	4	4	4	4

FINGERDBAS

CHOIR AAHS

38

DRUMS

DISTORTION

T												2	2	
A	3	3	3	3	3	3	3	3	3	1	1	1	1	1
B	3	3	3	3	3	3	1	1	3	4	4	4	4	4
	1	1	1	1	1	1	1	1	1	4	4	4	4	4

OVERDRIVE

T												2	2	
A	3	3	3	3	3	3	3	3	3	1	1	1	1	1
B	3	3	3	3	3	3	3	1	1	3	4	4	4	4
	1	1	1	1	1	1	1	1	1	1	4	4	4	4

FINGERDBAS

CHOIR AAHS

40

DRUMS

DISTORTION

OVERDRIVE

FINGERDBAS

CHOIR AAHS

43

DRUMS

DISTORTION

OVERDRIVE

FINGERDBAS

CHOIR AAHS



46

DRUMS

FINGERDBAS

HARPSICHRD

Detailed description: This system contains three staves. The top staff is for Drums, showing a steady eighth-note pattern. The middle staff is for Fingerbas (bass guitar), featuring a complex eighth-note line with various accidentals. The bottom staff is for Harpsichrd, with a sparse melody consisting of a few notes and rests.

49

DRUMS

FINGERDBAS

CHOIR AAHS

HARPSICHRD

Detailed description: This system contains four staves. The top staff is for Drums. The second staff is for Fingerbas. The third staff is for Choir AAHS, showing vocal notes with some rests. The bottom staff is for Harpsichrd.

52

DRUMS

FINGERDBAS

CHOIR AAHS

HARPSICHRD

Detailed description: This system contains four staves. The top staff is for Drums. The second staff is for Fingerbas. The third staff is for Choir AAHS, with more vocal notation. The bottom staff is for Harpsichrd.

55

DRUMS

FINGERDBAS

CHOIR AAHS

HARPSICHRD

58

DRUMS

DISTORTION

OVERDRIVE

FINGERDBAS

CHOIR AAHS

60

DRUMS



DISTORTION

TAB

3 3  
3 3  
1 1

OVERDRIVE

TAB

1 1 1 1 1 1

FINGERDBAS



CHOIR AAHS



62

DRUMS



DISTORTION

TAB

3 3  
3 3  
1 1

OVERDRIVE

TAB

1 1 1 1 1 1

FINGERDBAS



CHOIR AAHS



64

DRUMS

DISTORTION

OVERDRIVE

FINGERDBAS

CHOIR AAHS

Detailed description: This block contains the musical notation for measures 64 and 65. It features five staves: Drums, Distortion, Overdrive, Fingerdbas, and Choir Aahs. The Drums staff shows a consistent rhythmic pattern of eighth notes. The Distortion and Overdrive staves contain guitar tablature with fret numbers (1, 3) and string numbers (A, B). The Fingerdbas staff is in bass clef, showing a melodic line with various intervals and accidentals. The Choir Aahs staff is in treble clef, featuring a vocal line with slurs and accents.

66

DRUMS

DISTORTION

OVERDRIVE

FINGERDBAS

CHOIR AAHS

Detailed description: This block contains the musical notation for measures 66 and 67. It features five staves: Drums, Distortion, Overdrive, Fingerdbas, and Choir Aahs. The Drums staff continues with the same rhythmic pattern. The Distortion and Overdrive staves have more complex guitar tablature, including fret numbers 1, 2, 3, 4 and string numbers A, B. The Fingerdbas staff continues its melodic line. The Choir Aahs staff shows a vocal line with slurs and accents, similar to the previous section.

68

DRUMS

DISTORTION

OVERDRIVE

FINGERDBAS

CHOIR AAHS

70

DRUMS

DISTORTION

OVERDRIVE

FINGERDBAS

CHOIR AAHS

72

DRUMS

DISTORTION

T											2	2	2			
A	3	3 3	3 3	3 3	3 3	3	1	1 1	1 1	1 1	1	1	1	3	2 3	4 4 4
B	3	3 3	3 3	3 3	1 1	3	4	4 4	4 4	4 4	4	4	4	3	2 3	4 4 4
	1	1 1	1 1	1 1	1	1	4	4 4	4 4 4	4 4 4	1	0	1	1	2 2	2

OVERDRIVE

T												2	2	2			
A	3	3 3	3 3	3 3	3 3	3	1	1 1	1 1 1	1 1 1	1	1	1	3	2 3	4 4 4	
B	3	3 3	3 3	3 3	1 1	3	4	4 4	4 4 4	4 4 4	4	4	4	3	2 3	4 4 4	
	1	1 1	1 1 1	1 1 1	1	1	4	4 4	4 4 4	4 4 4	1	0	1	1	2 2	2	

FINGERDBAS

CHOIR AAHS

75

DRUMS

DISTORTION

T																	
A	3	2 3	3 3	3	1	3	2 3	4 4 4	4	3	2 3	3 3	3	1			
B	3	2 3	3 1	4	4	3	2 3	4 4 4	4	3	2 3	3 1	4				
	1	0 1	1	4	4	1	0 1	2 2	2	1	0 1	1	4				

OVERDRIVE

T																	
A	3	2 3	3 3	3	1	3	2 3	4 4 4	4	3	2 3	3 3	3	1			
B	3	2 3	3 1	4	4	3	2 3	4 4 4	4	3	2 3	3 1	4				
	1	0 1	1	4	4	1	0 1	2 2	2	1	0 1	1	4				

FINGERDBAS

CHOIR AAHS

78

DRUMS

DISTORTION

OVERDRIVE

FINGERDBAS

Detailed description of measures 78-79:  
 - **DRUMS:** A standard rock drum pattern with a steady bass drum and snare.   
 - **DISTORTION:** Tab for strings T, A, and B. Measure 78 has triplets of 3s on T and A, and 1s on B. Measure 79 has 1s on T and A, and 4s on B.   
 - **OVERDRIVE:** Tab for strings T, A, and B. Measure 78 has 1s on T and A, and 4s on B. Measure 79 has 1s on T and A, and 4s on B.   
 - **FINGERDBAS:** Bass line in bass clef, key signature of one sharp (F#). It features a rhythmic pattern of eighth and sixteenth notes.

80

DRUMS

DISTORTION

OVERDRIVE

FINGERDBAS

Detailed description of measures 80-81:  
 - **DRUMS:** Continues the rock drum pattern.   
 - **DISTORTION:** Tab for strings T, A, and B. Measure 80 has triplets of 3s on T and A, and 1s on B. Measure 81 has 1s on T and A, and 4s on B.   
 - **OVERDRIVE:** Tab for strings T, A, and B. Measure 80 has 1s on T and A, and 3s on B. Measure 81 has 3s on T and A, and 1s on B.   
 - **FINGERDBAS:** Bass line in bass clef, key signature of one sharp (F#). It continues the rhythmic pattern from the previous measures.

82

DRUMS

DISTORTION

OVERDRIVE

FINGERDBAS

Detailed description of measures 82-83:  
 - **DRUMS:** Continues the rock drum pattern.   
 - **DISTORTION:** Tab for strings T, A, and B. Measure 82 has triplets of 3s on T and A, and 1s on B. Measure 83 has 1s on T and A, and 4s on B.   
 - **OVERDRIVE:** Tab for strings T, A, and B. Measure 82 has 0s on T and A, and 1s on B. Measure 83 has 1s on T and A, and 4s on B.   
 - **FINGERDBAS:** Bass line in bass clef, key signature of one sharp (F#). It continues the rhythmic pattern from the previous measures.

84

DRUMS

DISTORTION

T																			
A	3	3	3		3	3	3	3	3		1	1	1		1	1	2	2	1
B	3	3	3		3	3	1	1	3		4	4	4		4	4	4	4	4
	1	1	1		1	1			1										

OVERDRIVE

T	1	2	1	1		3													
A																			
B																			

FINGERDBAS

86

DRUMS

DISTORTION

T																			
A	3	3	3		3	3	3	3	3		1	1	1		1	1	2	2	1
B	3	3	3		3	3	1	1	3		4	4	4		4	4	4	4	4
	1	1	1		1	1			1										

OVERDRIVE

T	0	1	0	0		1	0												
A																			
B																			

FINGERDBAS

88

DRUMS

DISTORTION

T																			
A	3		3	3		3	3	3	3	3		1	1	1		1	1	2	2
B	3		3	3		3	3	1	1	3		4	4	4		4	4	4	4
	1		1	1		1	1			1									

OVERDRIVE

T	0		1	0	0		1	0											
A	3																		
B																			

FINGERDBAS



90

DRUMS

DISTORTION

OVERDRIVE

FINGERDBAS

92

DRUMS

DISTORTION

OVERDRIVE

FINGERDBAS

94

DRUMS

DISTORTION

OVERDRIVE

FINGERDBAS

HARPSICHRD

DRUMS



DISTORTION

T  
A 3  
B 3  
1



FINGERDBAS



CHOIR AAHS



HARPSICHRD



DRUMS



FINGERDBAS



CHOIR AAHS



HARPSICHRD



103

DRUMS

FINGERDBAS

CHOIR AAHS

HARPSICHRD

106

DRUMS

DISTORTION


OVERDRIVE

FINGERDBAS

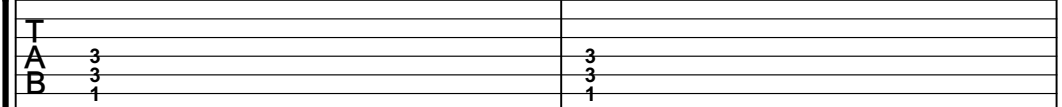
CHOIR AAHS

108

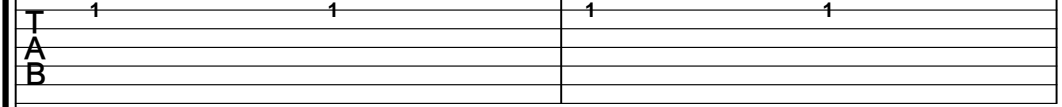
DRUMS




DISTORTION




OVERDRIVE



FINGERDBAS



CHOIR AAHS



Detailed description: This block contains musical notation for measures 108-110. It features five staves: DRUMS (drum set notation), DISTORTION (guitar tabs with fret numbers 1, 3, 3, 1), OVERDRIVE (guitar tabs with fret number 1), FINGERDBAS (bass guitar notation), and CHOIR AAHS (vocal notation with rests and notes). The notation is arranged in a vertical stack, with a brace on the left side grouping the guitar and bass staves.

110

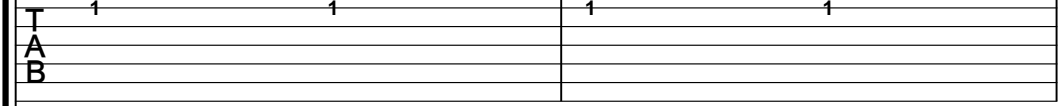
DRUMS




DISTORTION




OVERDRIVE



FINGERDBAS



CHOIR AAHS



Detailed description: This block contains musical notation for measures 110-112. It features five staves: DRUMS (drum set notation), DISTORTION (guitar tabs with fret numbers 1, 3, 3, 1), OVERDRIVE (guitar tabs with fret number 1), FINGERDBAS (bass guitar notation), and CHOIR AAHS (vocal notation with rests and notes). The notation is arranged in a vertical stack, with a brace on the left side grouping the guitar and bass staves.

112

DRUMS

DISTORTION

T		
A	3	3
B	3	3

OVERDRIVE

T	1	1	1	1	1	1
A						
B						

FINGERDBAS

CHOIR AAHS

114

DRUMS

DISTORTION

T										2	2	
A	3	3	3	3	3	3	3	3	1	1	1	1
B	3	3	3	3	3	1	1	3	4	4	4	4

OVERDRIVE

T											2	2	
A	3	3	3	3	3	3	3	3	1	1	1	1	1
B	3	3	3	3	3	1	1	3	4	4	4	4	4

FINGERDBAS

CHOIR AAHS

116

DRUMS

DISTORTION

OVERDRIVE

FINGERDBAS

CHOIR AAHS

118

DRUMS

DISTORTION

OVERDRIVE

FINGERDBAS

CHOIR AAHS

120

DRUMS

DISTORTION

OVERDRIVE

FINGERDBAS

CHOIR AAHS

122 ♩ = 120,000000

♩ = 121,001892

DRUMS

DISTORTION

OVERDRIVE

FINGERDBAS

CHOIR AAHS

124

♩ = 122,000816

DRUMS

DISTORTION

OVERDRIVE

FINGERDBAS

CHOIR AAHS

126

♩ = 123,001228

♩ = 124,000252

DRUMS

DISTORTION

OVERDRIVE

FINGERDBAS

CHOIR AAHS



DRUMS

Drum notation staff showing a sequence of drum hits in the first few measures.

DISTORTION

T	1	1 1	1 1	2 2	1				
A	1	1 1	1 1	1 1	1	3	3		
B	4	4 4	4 4	4 4	4	3	3		
					1	1	1		

OVERDRIVE

T	1	1 1	1 1	2 2	1				
A	1	1 1	1 1	1 1	1	3	3		
B	4	4 4	4 4	4 4	4	3	3		
					1	1	1		

FINGERDBAS

Bass line notation staff showing a sequence of notes in the first few measures.

CHOIR AAHS

Choir 'AAHS' notation staff showing a sequence of notes in the first few measures.

# Nirvana - Smells Like Teen Spirit 1

## DRUMS

♩ = 120,000000

3

7

11

15

20

25

29

33

36

40

V.S.

44



49



54



58



62



65



68



72



76



80



DRUMS

84



88



92



96



101



106



110



113



116



120



♩ = 120,000000

♩ = 121,001892

V.S.

4

DRUMS

124

♩ = 122,000816

♩ = 123,001228

Musical notation for drums, measures 124-127. The notation is on a single staff with a double bar line at the beginning. It consists of a series of eighth notes and sixteenth notes, with some notes beamed together. The notes are placed on the first and second lines of the staff.

128

♩ = 124,000252

Musical notation for drums, measure 128. The notation is on a single staff with a double bar line at the beginning. It consists of a series of eighth notes and sixteenth notes, with some notes beamed together. The notes are placed on the first and second lines of the staff. The measure ends with a double bar line and a fermata symbol.

3



DISTORTION

T							
A	3	3	3	3	3	3	3
B	1	1	1	1	1	1	1

66

T				2 2				2 2	
A	3 3 3	3 3 3 3	3 3	1 1 1	1 1 1 1 1	3 3 3	3 3 3 3	1 1 1	1 1 1 1 1
B	1 1 1	1 1	1	4 4 4	4 4 4 4	1 1 1	1 1 1 1 1	4 4 4	4 4 4 4

70

T				2 2				2 2 2	
A	3 3 3	3 3 3 3	3 3	1 1 1	1 1 1 1 1	3 3 3	3 3 3 3	1 1 1	1 1 1 1 1
B	1 1 1	1 1	1	4 4 4	4 4 4 4	1 1 1	1 1 1 1 1	4 4 4	4 4 4 4

74

T																			
A	3	2 3	4 4 4	3	2 3 3 1	3	2 3 4 4 4	3	2 3 3 1	3	3 3	3 3 3 3	3	3 3	3 3 3 3	3 3 3 3	3 3 3 3	3 3 3 3	3 3 3 3
B	1	0 1 2 2	1	0 1 4	1	0 1 2 2	1	0 1 4	1	0 1 4	1	1 1 1	1	1 1 1	1 1 1 1 1	1 1 1 1 1	1 1 1 1 1	1 1 1 1 1	1 1 1 1 1

79

T				2 2				2 2					2 2						
A	1 1 1	1 1 1	1 1 1 1 1	1 1 1 1 1	3 3 3	3 3 3 3 3	3 3 3 3 3	1 1 1	1 1 1	1 1 1 1 1	1 1 1	3 3 3	3 3 3 3 3	3 3 3 3 3	3 3 3 3 3	3 3 3 3 3	3 3 3 3 3	3 3 3 3 3	3 3 3 3 3
B	4 4 4	4 4	4 4	4 4	1 1 1	1 1 1 1 1	1 1 1 1 1	4 4 4	4 4	4 4 4 4	4 4	1 1 1	1 1 1 1 1	1 1 1 1 1	1 1 1 1 1	1 1 1 1 1	1 1 1 1 1	1 1 1 1 1	1 1 1 1 1

83

T				2 2				2 2					2 2						
A	1 1 1	1 1 1	1 1 1 1 1	1 1 1 1 1	3 3 3	3 3 3 3 3	3 3 3 3 3	1 1 1	1 1 1	1 1 1 1 1	1 1 1	3 3 3	3 3 3 3 3	3 3 3 3 3	3 3 3 3 3	3 3 3 3 3	3 3 3 3 3	3 3 3 3 3	3 3 3 3 3
B	4 4 4	4 4	4 4	4 4	1 1 1	1 1 1 1 1	1 1 1 1 1	4 4 4	4 4	4 4 4 4	4 4	1 1 1	1 1 1 1 1	1 1 1 1 1	1 1 1 1 1	1 1 1 1 1	1 1 1 1 1	1 1 1 1 1	1 1 1 1 1

87

T				2 2				2 2					2 2						
A	1 1 1	1 1 1	1 1 1 1 1	1 1 1 1 1	3 3 3	3 3 3 3 3	3 3 3 3 3	1 1 1	1 1 1	1 1 1 1 1	1 1 1	3 3 3	3 3 3 3 3	3 3 3 3 3	3 3 3 3 3	3 3 3 3 3	3 3 3 3 3	3 3 3 3 3	3 3 3 3 3
B	4 4 4	4 4	4 4	4 4	1 1 1	1 1 1 1 1	1 1 1 1 1	4 4 4	4 4	4 4 4 4	4 4	1 1 1	1 1 1 1 1	1 1 1 1 1	1 1 1 1 1	1 1 1 1 1	1 1 1 1 1	1 1 1 1 1	1 1 1 1 1

91

T				2 2				2 2					2 2						
A	1 1 1	1 1 1	1 1 1 1 1	1 1 1 1 1	3 3 3	3 3 3 3 3	3 3 3 3 3	1 1 1	1 1 1	1 1 1 1 1	1 1 1	3 3 3	3 3 3 3 3	3 3 3 3 3	3 3 3 3 3	3 3 3 3 3	3 3 3 3 3	3 3 3 3 3	3 3 3 3 3
B	4 4 4	4 4	4 4	4 4	1 1 1	1 1 1 1 1	1 1 1 1 1	4 4 4	4 4	4 4 4 4	4 4	1 1 1	1 1 1 1 1	1 1 1 1 1	1 1 1 1 1	1 1 1 1 1	1 1 1 1 1	1 1 1 1 1	1 1 1 1 1

96

8

T																				
A	3	3						3	3	3	3	3	3	3	3	3	3	3	3	3
B	1	1						1	1	1	1	1	1	1	1	1	1	1	1	1

111

T																				
A	3	3	3	3 3 3	3 3 3 3 3	3 3 3 3 3	3 3 3 3 3	1 1 1	1 1 1	1 1 1 1 1	1 1 1	1 1 1	1 1 1 1 1	1 1 1	1 1 1	1 1 1	1 1 1	1 1 1	1 1 1	
B	1	1	1	1 1 1	1 1 1 1 1	1 1 1 1 1	1 1 1 1 1	4 4 4	4 4 4	4 4 4 4 4	4 4 4	4 4 4	4 4 4 4 4	4 4 4	4 4 4	4 4 4	4 4 4	4 4 4	4 4 4	

					2 2					2 2			
T				3 3	3 3	1 1 1	1 1 1	1 1 1	3 3	3 3	1 1 1	1 1 1	1 1 1
A	3 3 3	3 3 3	3 3 3	3 3 3	3 3 3	1 1 1	1 1 1	1 1 1	3 3 3	3 3 3	3 3 3	3 3 3	1 1 1
B	1 1 1	1 1 1	1 1 1	1 1 1	1 1 1	4 4 4	4 4 4	4 4 4	1 1 1	1 1 1	1 1 1	4 4 4	4 4 4

120

♩ = 120,000000

♩ = 121,001892

						2 2 2					2 2	
T						1 1 1	1 1 1	1 1 1	3 3	3 3	1 1 1	1 1 1
A	3 3 3	3 3 3	3 3 3	3 3 3	3 3 3	1 1 1	1 1 1	1 1 1	3 3 3	3 3 3	3 3 3	1 1 1
B	1 1 1	1 1 1	1 1 1	1 1 1	1 1 1	4 4 4	4 4 4	4 4 4	3 3 3	3 3 3	3 3 3	4 4 4

124

♩ = 122,000816


♩ = 123,001228

						2 2					2 2	
T						1 1 1	1 1 1	1 1 1	3 3	3 3	1 1 1	1 1 1
A	3 3 3	3 3 3	3 3 3	3 3 3	3 3 3	1 1 1	1 1 1	1 1 1	3 3 3	3 3 3	3 3 3	1 1 1
B	1 1 1	1 1 1	1 1 1	1 1 1	1 1 1	4 4 4	4 4 4	4 4 4	1 1 1	1 1 1	1 1 1	4 4 4

128

♩ = 124,000252 

2

						2 2					
T						1 1 1	1 1 1	1 1 1			
A	3 3 3	3 3 3	3 3 3	3 3 3	3 3 3	1 1 1	1 1 1	4 4 4	3	3	
B	1 1 1	1 1 1	1 1 1	1 1 1	1 1 1	4 4 4	4 4 4	4 4 4	1	1	





OVERDRIVE

T	1	1	1	1	1	1	1	1	1	1	1	1	1	1	1	1	1	1
A																		
B																		

64

T	1	1	1	1	1	1							2	2				
A							3	3	3	3	3	3	3	3	3	3	3	3
B							3	3	3	3	3	3	1	1	3	1	1	3
							1	1	1	1	1	1	4	4	4	4	4	4

68

T							2	2					2	2				
A	3	3	3	3	3	3	3	3	3	1	1	1	1	1	1	1	1	1
B	3	3	3	3	3	3	3	3	3	1	1	3	3	3	3	3	3	3
	1	1	1	1	1	1	4	4	4	4	4	4	1	1	1	1	1	1

72

T							2	2	2											
A	3	3	3	3	3	3	3	3	3	1	1	1	3	2	3	4	4	4		
B	3	3	3	3	3	3	3	3	3	1	1	3	3	2	3	4	4	4		
	1	1	1	1	1	1	4	4	4	4	4	4	1	0	1	2	2	1	0	1

76

T							1	4	4	1			1	1	1	4	1	2	1	1	3
A	3	2	3	4	4	4	3	2	3	3	1										
B	3	2	3	4	4	4	3	2	3	1	1										
	1	0	1	2	2		1	0	1	4											

81

T	3		1	1					0	1	4	4	1				1	1	1	4	1	2	1	1	3
A																									
B																									

85

T	3		1	1					0	1	0	0	1	0			0	1	0	0	1	0	0	0	1	0	0	1	0
A																													
B																													

89

T	0	1	0	0	1	0	0	3	1	0	0	1	0	0	1	0	0	1	0	0	0	1	0	0	1	0	
A																											
B																											

93

T	0	1	0	0	1	0	0	0									1	1	1	1
A								3				3	-----							
B								1				1	-----							

10

107

T	1	1	1	1	1	1	1	1	1	1	1	1	1	1	1	1	1	1
A																		
B																		

T	1	1	1					2	2											
A					3	3	3	3	3	3	3	3	3	3	3	3	3	3	3	3
B				3	1	1	1	1	1	1	1	1	1	1	1	1	1	1	1	1

5  
?

117

T								2	2											
A	1	1	1	1	1	1	1	1	1	1	1	1	1	1	1	1	1	1	1	1
B	4	4	4	4	4	4	4	4	4	4	4	4	4	4	4	4	4	4	4	4

121

♩ = 120,000000

♩ = 121,001892

T	1	1	1	1	1	1	1	2	2	2										
A	1	1	1	1	1	1	1	3	3	3	3	3	3	3	3	3	3	3	3	3
B	4	4	4	4	4	4	4	3	3	3	3	3	3	3	3	3	3	3	3	3

125

♩ = 122,000816

♩ = 123,001228

T	1	1	1	1	1	1	1	2	2											
A	1	1	1	1	1	1	1	3	3	3	3	3	3	3	3	3	3	3	3	3
B	4	4	4	4	4	4	4	3	3	3	3	3	3	3	3	3	3	3	3	3

128

♩ = 124,000252 

2

T								2	2											
A	3	3	3	3	3	3	3	3	3	3	3	3	3	3	3	3	3	3	3	3
B	1	1	1	1	1	1	1	4	4	4	4	4	4	4	4	4	4	4	4	4

♩ = 120,000000

4

8

12

16

20

24

28

32

36

40

V.S.

44



48



52



56



60



64



68



72



76



80



84



88



92



96



100



104



108



112



116



120

♩ = 120,000000

♩ = 121,001892



V.S.

4

# FINGERDBAS

124

♩ = 122,000816

♩ = 123,001228



128

♩ = 124,000252



3

CHOIR AAHS

Nirvana - Smells Like Teen Spirit 1

♩ = 120,000000

**16**

21

25

28

32

36

40

43

**5**



50

54

58

61

65

69

73

**21**

98

102

106

109

Musical staff for measure 109, featuring a treble clef and a key signature of one sharp (F#). The staff contains a sequence of eighth notes with a rhythmic pattern of eighth rest followed by an eighth note.

113

Musical staff for measure 113, featuring a treble clef and a key signature of one sharp (F#). The staff contains a sequence of eighth notes with a rhythmic pattern of eighth rest followed by an eighth note.

117

Musical staff for measure 117, featuring a treble clef and a key signature of one sharp (F#). The staff contains a sequence of eighth notes with a rhythmic pattern of eighth rest followed by an eighth note.

121

♩ = 120,000000

♩ = 121,001892

Musical staff for measure 121, featuring a treble clef and a key signature of one sharp (F#). The staff contains a sequence of eighth notes with a rhythmic pattern of eighth rest followed by an eighth note.

125

♩ = 122,000816

♩ = 123,001228

♩ = 124,000252

Musical staff for measure 125, featuring a treble clef and a key signature of one sharp (F#). The staff contains a sequence of eighth notes with a rhythmic pattern of eighth rest followed by an eighth note.

129

Musical staff for measure 129, featuring a treble clef and a key signature of one sharp (F#). The staff contains a sequence of eighth notes with a rhythmic pattern of eighth rest followed by an eighth note. A double bar line is present at the end of the staff, with a '2' above it, indicating a second ending.

HARPSICHRD

Nirvana - Smells Like Teen Spirit 1

♩ = 120,000000

The first system of the harpsichord score is in 4/4 time. The right hand (treble clef) has a whole rest in the first measure, followed by quarter notes G4, A4, B4, and C5 in the next three measures. The left hand (bass clef) features a complex accompaniment of eighth notes and chords, primarily in the lower register.

The second system begins at measure 5. The right hand has a whole rest in the first measure, followed by quarter notes G4, A4, B4, and C5 in the next three measures. The left hand has an 8-measure rest in the first measure, followed by quarter notes G4, A4, B4, and C5 in the next three measures.

The third system begins at measure 17. The right hand has a whole rest in the first measure, followed by quarter notes G4, A4, B4, and C5 in the next three measures. The left hand has a whole rest in the first measure, followed by quarter notes G4, A4, B4, and C5 in the next three measures.

The fourth system begins at measure 23. The right hand has a whole rest in the first measure, followed by quarter notes G4, A4, B4, and C5 in the next three measures. The left hand has a 20-measure rest in the first measure, followed by quarter notes G4, A4, B4, and C5 in the next three measures.

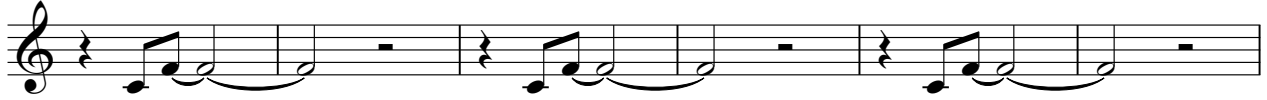
The fifth system begins at measure 47. The right hand has a whole rest in the first measure, followed by quarter notes G4, A4, B4, and C5 in the next three measures. The left hand has a whole rest in the first measure, followed by quarter notes G4, A4, B4, and C5 in the next three measures.

The sixth system begins at measure 53. The right hand has a whole rest in the first measure, followed by quarter notes G4, A4, B4, and C5 in the next three measures. The left hand has a whole rest in the first measure, followed by quarter notes G4, A4, B4, and C5 in the next three measures.

The seventh system begins at measure 56. The right hand has a whole rest in the first measure, followed by quarter notes G4, A4, B4, and C5 in the next three measures. The left hand has a 36-measure rest in the first measure, followed by quarter notes G4, A4, B4, and C5 in the next three measures.

HARPSICHRD

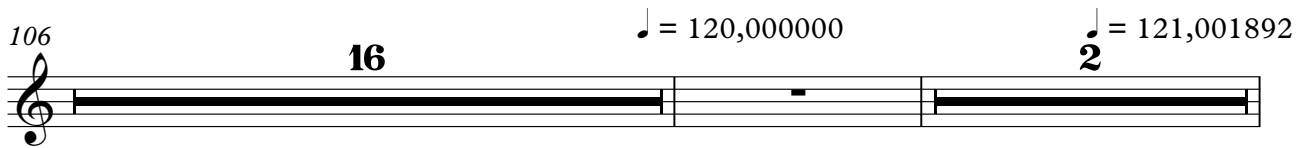
94



100



106



125

