

# Nirvana muddy banks - polly

♩ = 160,000000

fret

steel

4

drums

fret

over

steel

7

drums

fret

over

steel

10

drums

fret

over

steel

finger

13

drums

fret

over

over

finger

15 3

drums

fret

over

over

finger

18

drums

fret

over

over

finger

20

drums

fret

over

over

finger

23

drums

fret

over

over

finger

26

drums

fret

over

over

finger

29

drums

fret

over

over

finger

32

drums

fret

over

over

finger

35

drums

fret

over

over

finger

38

drums

fret

over

over

finger

41

drums

fret

over

over

finger

43

drums

fret

over

over

finger

46

drums

fret

over

over

finger



48

drums

fret

over

over

finger

51

drums

fret

over

over

finger

54

drums

fret

over

over

finger

57

drums

over

finger

60

drums

fret

over

over

finger

63  11

drums 

fret 

over 

over 

finger 

66 

drums 

fret 

over 

over 

finger 

69

drums

fret

over

over

finger

71

drums

fret

over

over

finger

74

drums

fret

over

over

finger

76

drums

fret

over

over

finger

79

drums

fret

over

over

finger

82

drums

fret

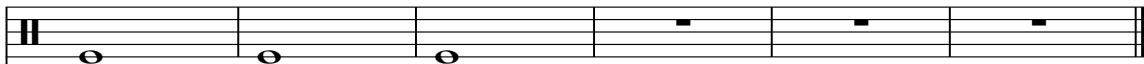
over

over


finger

85

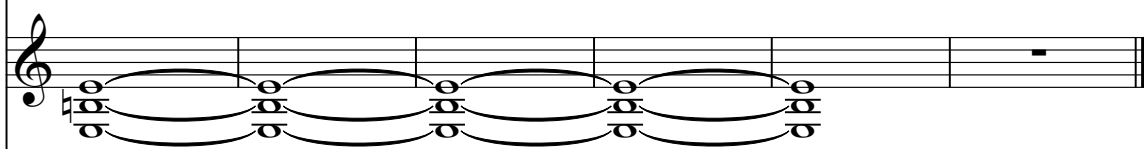
drums




fret



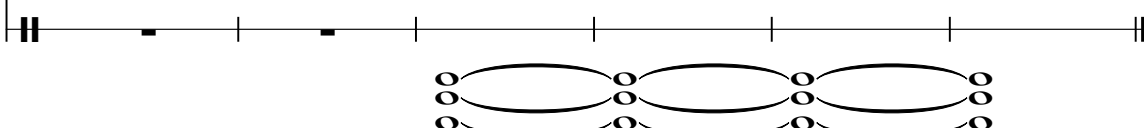
over



finger



applause



# Nirvana muddy banks - polly

drums

♩ = 160,000000  
4

8

12

15

18

21

24

27

31

35

The image displays a drum score for the song 'Muddy Banks of the Polly' by Nirvana. It is written in 4/4 time with a tempo of 160,000000. The score is organized into systems, each consisting of a drum staff and a bass line staff. The drum staff uses 'x' marks to denote hits on the snare, toms, and cymbals, with asterisks indicating cymbal crashes. The bass line staff shows the corresponding bass notes. Measure numbers 8, 12, 15, 18, 21, 24, 27, 31, and 35 are clearly marked at the beginning of their respective systems. The notation includes various rhythmic patterns, including eighth and sixteenth notes, and rests.

V.S.



drums

This musical score for drums consists of ten systems, each with a measure number on the left and a staff with rhythmic notation. The notation includes various note values (quarter, eighth, sixteenth notes), rests, and dynamic markings such as asterisks (\*). Above the staff, there are symbols for drum parts: 'x' for cymbals, 'o' for snare, and 'd' for bass drum. Some notes are beamed together, and there are occasional slurs. The systems are numbered 39, 42, 45, 48, 51, 54, 57, 61, 65, and 68.

71 drums 3

74

77

80

83

85

Nirvana muddy banks - polly

fret

♩ = 160,000000

5

9

13

17

21

25

29

33

37

V.S.

41

45

49

53

57

64

68

72

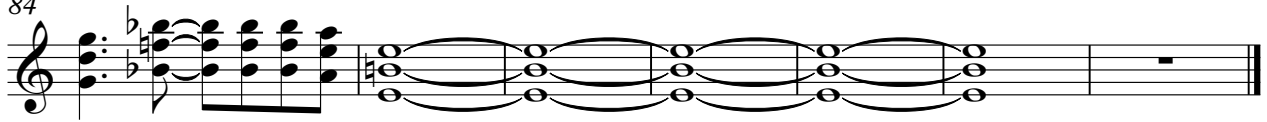
76

80

fret

3

84



# Nirvana muddy banks - polly

over

♩ = 160,000000

12

16

20

24

28

32

36

40

44

48

V.S.

52

56

63

67

71

75

79

83

86

# Nirvana muddy banks - polly

over

♩ = 160,000000

4

8

12

16

20

24

27

4



33

37

41

45

49

53

57

63

67

71

75

over

3

79

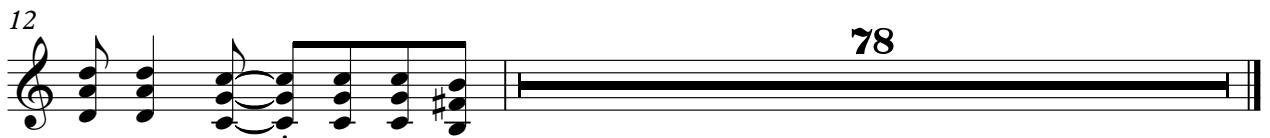
83

6

steel

# Nirvana muddy banks - polly

♩ = 160,000000



# Nirvana muddy banks - polly

finger

♩ = 160,000000

**11**



15



19



23



27



31



35



39



43



47



V.S.

51



55



59



63



67



71



75



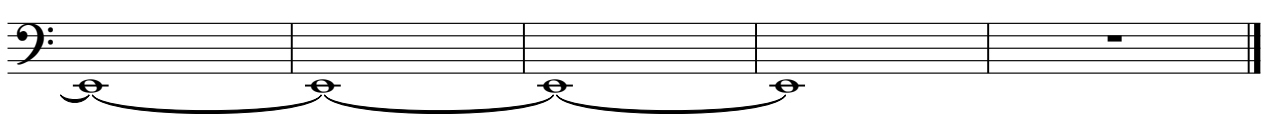
79



83



86



applause

# Nirvana muddy banks - polly

♩ = 160,000000

**86**

The notation shows a 4/4 time signature and a tempo of 160,000,000. A thick black line is labeled '86'. This is followed by a thin line with four vertical tick marks. Below this line are three pairs of oval shapes, each containing two small circles, representing a three-part harmony.