

11

David Grohl -Drums-

Kurdt Kobain -Guitar Mute-

Kurdt Kobain -Vocals-

13

David Grohl -Drums-

Kurdt Kobain -Guitar Mute-

Kurdt Kobain -Vocals-

15

David Grohl -Drums-

Kurdt Kobain -Guitar Mute-

Kurdt Kobain -Vocals-

17

David Grohl -Drums-

Kurdt Kobain -Guitar Mute-

Kurdt Kobain -Vocals-

19

David Grohl -Drums-

Kurdt Kobain -Guitar Mute-

Kurdt Kobain -Vocals-

21

David Grohl -Drums-

Kurdt Kobain -Dist Guitar-

Kurdt Kobain -Vocals-

Chris Novoselic -Bass-

23

David Grohl -Drums-
Kurt Cobain -Dist Guitar-
Kurt Cobain -Vocals-
Chris Novoselic -Bass-

This musical score covers measures 23 and 24. Measure 23 features a drum pattern with a snare on the second and fourth beats, and a bass drum on the first, third, and fifth. The guitar plays a distorted power chord on the first beat, followed by a sequence of chords and eighth notes. The vocal line begins with a quarter rest, followed by a melodic phrase. The bass line consists of a steady eighth-note pattern.

25

David Grohl -Drums-
Kurt Cobain -Dist Guitar-
Kurt Cobain -Vocals-
Chris Novoselic -Bass-

This musical score covers measures 25 and 26. Measure 25 continues the drum pattern from the previous section. The guitar plays a distorted power chord on the first beat, followed by a sequence of chords and eighth notes. The vocal line continues the melodic phrase from the previous section. The bass line continues the eighth-note pattern.

27    

David Grohl -Drums-

Kurdt Kobain -Dist Guitar-

Kurdt Kobain -Vocals-

Chris Novoselic -Bass-

29     

David Grohl -Drums-

Kurdt Kobain -Guitar Mute-

Kurdt Kobain -Dist Guitar-

Kurdt Kobain -Vocals-

Chris Novoselic -Bass-

31   

David Grohl -Drums-

Kurdt Kobain -Guitar Mute-

Chris Novoselic -Bass-

33

David Grohl -Drums-

Kurdt Kobain -Guitar Mute-

Kurdt Kobain -Vocals-

Chris Novoselic -Bass-

35

David Grohl -Drums-

Kurdt Kobain -Guitar Mute-

Kurdt Kobain -Vocals-

Chris Novoselic -Bass-

37

David Grohl -Drums-

Kurdt Kobain -Guitar Mute-

Kurdt Kobain -Vocals-

Chris Novoselic -Bass-

39

David Grohl -Drums-

Kurdt Kobain -Guitar Mute-

Kurdt Kobain -Vocals-

Chris Novoselic -Bass-

41

David Grohl -Drums-

Kurdt Kobain -Guitar Mute-

Kurdt Kobain -Vocals-

Chris Novoselic -Bass-

43

David Grohl -Drums-

Kurdt Kobain -Guitar Mute-

Kurdt Kobain -Vocals-

Chris Novoselic -Bass-

45

David Grohl -Drums-

Kurdt Kobain -Guitar Mute-

Kurdt Kobain -Vocals-

Chris Novoselic -Bass-

47

David Grohl -Drums-

Kurdt Kobain -Guitar Mute-

Kurdt Kobain -Vocals-

Chris Novoselic -Bass-

49

David Grohl -Drums-

Kurdt Kobain -Dist Guitar-

Kurdt Kobain -Vocals-

Chris Novoselic -Bass-

50

David Grohl -Drums-

Kurdt Kobain -Dist Guitar-

Kurdt Kobain -Vocals-

Chris Novoselic -Bass-

52

David Grohl -Drums-

Kurdt Kobain -Dist Guitar-

Kurdt Kobain -Vocals-

Chris Novoselic -Bass-

54

David Grohl -Drums-

Kurdt Kobain -Dist Guitar-

Kurdt Kobain -Vocals-

Chris Novoselic -Bass-

56

David Grohl -Drums-

Kurdt Kobain -Dist Guitar-

Kurdt Kobain -Vocals-

Chris Novoselic -Bass-

♩ = 130,000137

11

58

David Grohl -Drums-

Kurdt Kobain -Dist Guitar-

Kurdt Kobain -Vocals-

Chris Novoselic -Bass-

♩ = 130,000137

60

David Grohl -Drums-

Kurdt Kobain -Dist Guitar-

Kurdt Kobain -Vocals-

Chris Novoselic -Bass-

62

David Grohl -Drums-
Kurt Cobain -Dist Guitar-
Kurt Cobain -Vocals-
Chris Novoselic -Bass-

This musical score block covers measures 62 and 63. It features four staves: Drums, Distorted Guitar, Vocals, and Bass. Measure 62 includes drum notation with asterisks above the staff, guitar chords, vocal notes, and bass notes. Measure 63 continues the instrumental and vocal parts.

64

David Grohl -Drums-
Kurt Cobain -Dist Guitar-
Kurt Cobain -Vocals-
Chris Novoselic -Bass-

This musical score block covers measures 64 and 65. It features four staves: Drums, Distorted Guitar, Vocals, and Bass. Measure 64 includes drum notation with asterisks above the staff, guitar chords, vocal notes, and bass notes. Measure 65 continues the instrumental and vocal parts.

66 13

David Grohl -Drums-

Kurdt Kobain -Dist Guitar-

Kurdt Kobain -Vocals-

Chris Novoselic -Bass-

68

David Grohl -Drums-

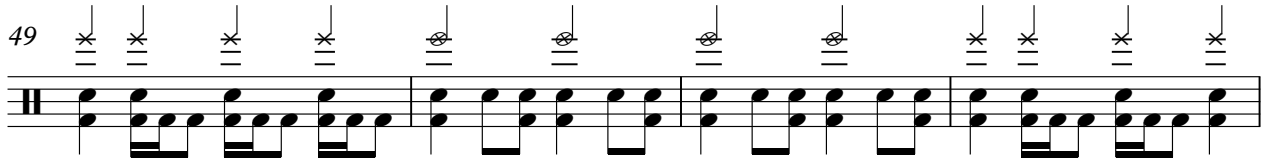
Kurdt Kobain -Dist Guitar-

Chris Novoselic -Bass-

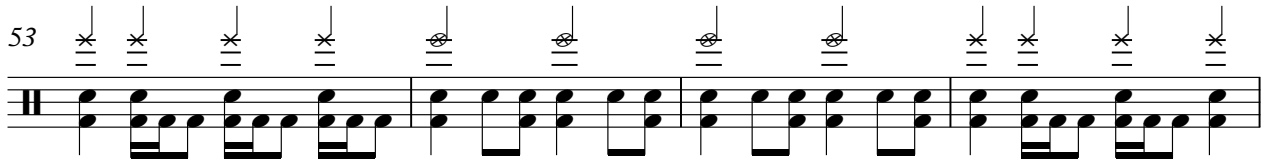
45



49

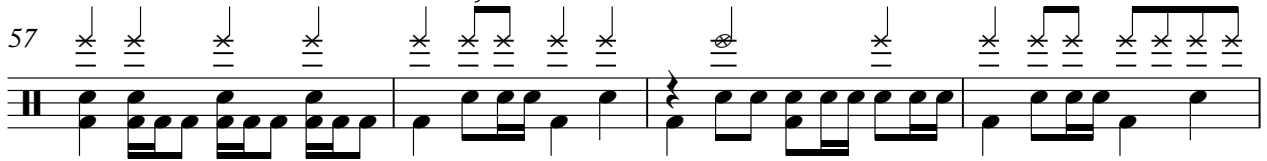


53

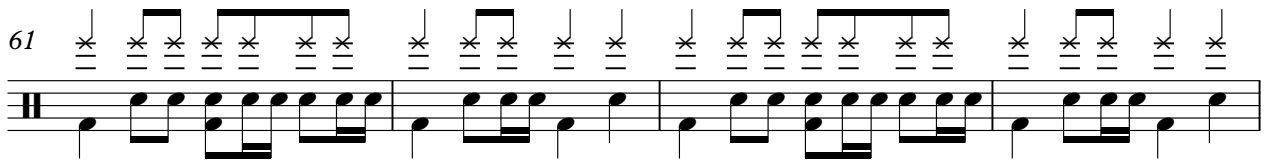


$\text{♩} = 130,000137$

57



61



65



Kurdt Kobain -Guitar Mute- Nirvana nevermind - lithium cheap

♩ = 130,000 137 = 120,000000

6

10

14

18

30

34

38

42

46

V.S.

2

Kurdt Kobain -Guitar Mute-

49

♩ = 130,000137

A musical staff with a treble clef. The staff contains two thick black horizontal bars representing guitar frets. The first bar is labeled with the number '9' above it, and the second bar is labeled with the number '11' above it. The staff ends with a double bar line.

2

Kurdt Kobain -Vocals-

53



58 ♩ = 130,000137



63



2

52

Musical notation for bass line starting at measure 52. The notation is on a single bass clef staff. It begins with a whole rest, followed by a series of eighth notes and quarter notes, including some beamed eighth notes. There are two fermatas over the first two measures. The key signature has one sharp (F#).

56

♩ = 130,000137

Musical notation for bass line starting at measure 56. The notation is on a single bass clef staff. It begins with a whole rest, followed by eighth notes and quarter notes. There are two fermatas over the first two measures. The key signature has one sharp (F#).

60

Musical notation for bass line starting at measure 60. The notation is on a single bass clef staff. It consists of eighth notes and quarter notes, with some beamed eighth notes. There are two fermatas over the first two measures. The key signature has one sharp (F#).

64

Musical notation for bass line starting at measure 64. The notation is on a single bass clef staff. It consists of quarter notes and eighth notes, with some beamed eighth notes. There are two fermatas over the first two measures. The key signature has one sharp (F#).

66

Musical notation for bass line starting at measure 66. The notation is on a single bass clef staff. It consists of quarter notes and eighth notes, with some beamed eighth notes. The key signature has one sharp (F#).