

# Obispo Pascal - Personne 2

$\text{♩} = 74,000076$

Piano 1

Acoubass

$\text{♩} = 74,000076$

Piano 21

4

Piano 1

Acoubass

El organ

Piano 21

6

Piano 1

Acoubass

El organ

Piano 21

8

Piano 1

Acoubass

El organ

Piano 21

10

Piano 1

Acoubass

El organ

Piano 21

12

Piano 1

Acoubass

El organ

Piano 21

14

Piano 1

Acoubass

El organ

Piano 21

16

Piano 1

Acoubass

El organ

Piano 21

19

Piano 1

Acoubass

El organ

Piano 21

22

Piano 1

Acoubass

El organ

Piano 21

Detailed description: This system covers measures 22, 23, and 24. Piano 1 (top staff) plays chords: G4-B4-D5 (measures 22-23), F4-A4-C5 (measure 23), E4-G4-B4 (measure 24), and G4-B4-D5 (measures 24-25). Acoubass (second staff) plays a rhythmic line with eighth notes and quarter notes, including a flat sign in measure 24. El organ (third staff) plays a melodic line with eighth notes and quarter notes, including rests in measures 23 and 24. Piano 21 (bottom staff) plays a rhythmic line with eighth notes and quarter notes.

25

Piano 1

Acoubass

El organ

Piano 21

Detailed description: This system covers measures 25 and 26. Piano 1 (top staff) plays chords: G4-B4-D5 (measures 25-26), F4-A4-C5 (measure 26), and G4-B4-D5 (measures 27-28). Acoubass (second staff) plays a rhythmic line with eighth notes and quarter notes, including a flat sign in measure 26. El organ (third staff) plays a melodic line with eighth notes and quarter notes, including rests in measures 25 and 26. Piano 21 (bottom staff) plays a rhythmic line with eighth notes and quarter notes.

27

Piano 1

Acoubass

El organ

Piano 21

Detailed description: This system covers measures 27 and 28. Piano 1 (top staff) plays chords: G4-B4-D5 (measures 27-28), F4-A4-C5 (measure 28), and G4-B4-D5 (measures 29-30). Acoubass (second staff) plays a rhythmic line with eighth notes and quarter notes. El organ (third staff) plays a melodic line with eighth notes and quarter notes, including rests in measures 27 and 28. Piano 21 (bottom staff) plays a rhythmic line with eighth notes and quarter notes.

29

Piano 1

Acoubass

El organ

Piano 21

31

Piano 1

Acoubass

El organ

Piano 21

33

Piano 1

Acoubass

El organ

Piano 21

35

Piano 1

Acoubass

El organ

Piano 21

37

Piano 1

Acoubass

El organ

Piano 21

39

Piano 1

Acoubass

El organ

Piano 21

41

Piano 1

Acoubass

El organ

Piano 21

44

Piano 1

Acoubass

El organ

Piano 21

46

Piano 1

Acoubass

El organ

Piano 21

49

Piano 1

Acoubass

El organ

Piano 21

52

Piano 1

Acoubass

Piano 21

55

Piano 1

Acoubass

El organ

Piano 21

The image displays a musical score for measures 49 through 55. The score is organized into three systems, each containing four staves. The instruments are Piano 1, Acoubass, El organ, and Piano 21. Measure 49 shows Piano 1 with a treble clef and a key signature of one sharp (F#), playing chords in the right hand and a rhythmic pattern in the left hand. Acoubass plays a bass line with eighth notes. El organ plays a melodic line with eighth notes. Piano 21 plays a rhythmic pattern with eighth notes. Measure 52 shows Piano 1 with a treble clef and a key signature of one sharp, playing chords. Acoubass plays a bass line with eighth notes. Piano 21 plays a rhythmic pattern with eighth notes. Measure 55 shows Piano 1 with a treble clef and a key signature of one sharp, playing chords. Acoubass plays a bass line with eighth notes. El organ plays a melodic line with eighth notes. Piano 21 plays a rhythmic pattern with eighth notes. The time signature changes from 2/4 to 4/4 at measure 52 and back to 2/4 at measure 55.



58

Piano 1

Acoubass

El organ

Piano 21

60

Piano 1

Acoubass

El organ

Piano 21

62

Piano 1

Acoubass

El organ

Piano 21

Detailed description: This system contains measures 62 through 65. Piano 1 (top staff) plays a series of chords: two G major chords, two F major chords, and two E minor chords. Acoubass (second staff) plays a rhythmic pattern of eighth and quarter notes, including a descending line in measure 65. El organ (third staff) plays a melodic line with eighth and quarter notes, including a descending line in measure 65. Piano 21 (bottom staff) plays a rhythmic pattern of eighth and quarter notes.

64

Piano 1

Acoubass

El organ

Piano 21

Detailed description: This system contains measures 64 through 67. Piano 1 (top staff) plays a series of chords: two G major chords, two F major chords, and two E minor chords. Acoubass (second staff) plays a rhythmic pattern of eighth and quarter notes, including a descending line in measure 67. El organ (third staff) plays a melodic line with eighth and quarter notes, including a descending line in measure 67. Piano 21 (bottom staff) plays a rhythmic pattern of eighth and quarter notes.

66

Piano 1

Acoubass

El organ

Piano 21

Detailed description: This system contains measures 66 through 69. Piano 1 (top staff) plays a series of chords: two G major chords, two F major chords, and two E minor chords. Acoubass (second staff) plays a rhythmic pattern of eighth and quarter notes, including a descending line in measure 69. El organ (third staff) plays a melodic line with eighth and quarter notes, including a descending line in measure 69. Piano 21 (bottom staff) plays a rhythmic pattern of eighth and quarter notes.

68

Piano 1

Acoubass

El organ

Piano 21

70

Piano 1

Acoubass

El organ

Piano 21

72

Piano 1

Acoubass

El organ

Piano 21

74

Piano 1

Acoubass

El organ

Piano 21



76

Piano 1

Acoubass

El organ

Piano 21



78

Piano 1

Acoubass

El organ

Piano 21





Piano 1

Obispo Pascal - Personne 2

♩ = 74,000076

5

10

15

20

26

31

36

41

V.S.

47

52

57

60

65

71

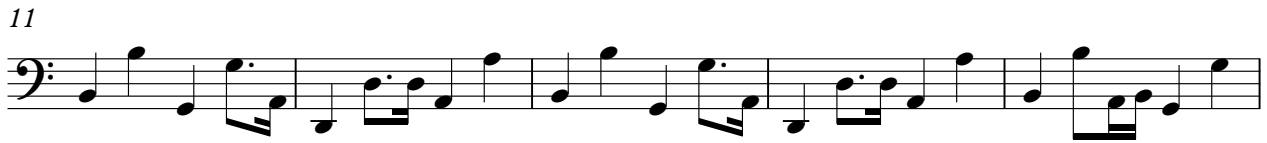
76

79

Obispo Pascal - Personne 2

Acoubass

♩ = 74,000076



V.S.



44



47



51



56



61



64



67



70



73



77



80



♩ = 74,000076

4

7

11

14

18

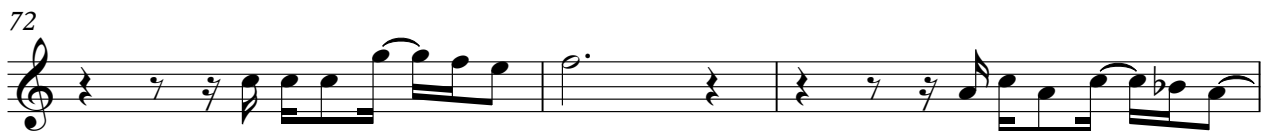
22

26

29

33

36



♩ = 74,000076

5

8

11

14

17

21

25

29

32

V.S.



73



77



80

