

Onbekende Nederlandse Songs Diversen - Roos Zonder I

♩ = 92,000549

DRUMS

VIBRAPHONE

JAZZ GTR

STEEL GTR

ACOU BASS

A.PIANO 1

6

DRUMS

JAZZ GTR

STEEL GTR

ACOU BASS

A.PIANO 1

9

DRUMS

JAZZ GTR

STEEL GTR

ACOU BASS

A.PIANO 1

Detailed description: This system covers measures 9, 10, and 11. The DRUMS part features a consistent pattern of eighth notes with 'x' marks above them, indicating cymbal hits. The JAZZ GTR part has sparse chords, including a triad in measure 9 and a dyad in measure 11. The STEEL GTR part plays a rhythmic pattern of eighth notes with chords. The ACOU BASS part has a simple eighth-note line. The A.PIANO 1 part features a long, sustained chord in measure 9 and another in measure 11.

12

DRUMS

JAZZ GTR

STEEL GTR

ACOU BASS

A.PIANO 1

Detailed description: This system covers measures 12, 13, and 14. The DRUMS part continues with the same eighth-note pattern. The JAZZ GTR part has a more active line with chords and a melodic fragment in measure 14. The STEEL GTR part maintains its rhythmic eighth-note pattern. The ACOU BASS part has a more complex eighth-note line with some rests. The A.PIANO 1 part has a long, sustained chord in measure 12 and another in measure 14.

15

DRUMS

JAZZ GTR

STEEL GTR

ACOU BASS

A.PIANO 1

18

DRUMS

JAZZ GTR

STEEL GTR

ACOU BASS

A.PIANO 1

21

DRUMS

JAZZ GTR

STEEL GTR

ACOU BASS

A.PIANO 1

24

DRUMS

JAZZ GTR

STEEL GTR

ACOU BASS

A.PIANO 1

27

DRUMS

JAZZ GTR

STEEL GTR

ACOU BASS

A.PIANO 1

30

DRUMS

JAZZ GTR

STEEL GTR

ACOU BASS

A.PIANO 1

33

DRUMS

JAZZ GTR

STEEL GTR

ACOU BASS

A.PIANO 1

36

DRUMS

JAZZ GTR

STEEL GTR

ACOU BASS

A.PIANO 1

39

DRUMS

JAZZ GTR

STEEL GTR

ACOU BASS

A.PIANO 1

42

DRUMS

JAZZ GTR

STEEL GTR

ACOU BASS

A.PIANO 1

45

DRUMS

JAZZ GTR

STEEL GTR

ACOU BASS

A.PIANO 1

48

DRUMS

JAZZ GTR

STEEL GTR

ACOU BASS

A.PIANO 1

51

DRUMS

JAZZ GTR

STEEL GTR

ACOU BASS

A.PIANO 1

Detailed description: This system contains measures 51, 52, and 53. The DRUMS part features a consistent pattern of eighth notes with 'x' marks above them, indicating cymbal hits. The JAZZ GTR part has sparse chords, including a triad in measure 51 and a dyad in measure 52. The STEEL GTR part plays a series of chords with a rhythmic pattern of eighth notes and rests. The ACOU BASS part has a melodic line with eighth notes and rests. The A.PIANO 1 part features sustained chords with long horizontal lines indicating they are held across measures.

54

DRUMS

JAZZ GTR

STEEL GTR

ACOU BASS

A.PIANO 1

Detailed description: This system contains measures 54, 55, and 56. The DRUMS part continues with the same eighth-note pattern. The JAZZ GTR part has a triad in measure 54 and a dyad in measure 55, both with long horizontal lines indicating they are sustained. The STEEL GTR part continues with its chordal pattern. The ACOU BASS part has a simple melodic line. The A.PIANO 1 part has sustained chords with long horizontal lines.

57

DRUMS

JAZZ GTR

STEEL GTR

ACOU BASS

A.PIANO 1

60

DRUMS

JAZZ GTR

STEEL GTR

ACOU BASS

A.PIANO 1

63

DRUMS

JAZZ GTR

STEEL GTR

ACOU BASS

A.PIANO 1

66

DRUMS

JAZZ GTR

STEEL GTR

ACOU BASS

A.PIANO 1

69

DRUMS

JAZZ GTR

STEEL GTR

ACOU BASS

A.PIANO 1

72

DRUMS

VIBRAPHONE

JAZZ GTR

STEEL GTR

ACOU BASS

A.PIANO 1

75

DRUMS

VIBRAPHONE

JAZZ GTR

STEEL GTR

ACOU BASS

A.PIANO 1

78

DRUMS

VIBRAPHONE

JAZZ GTR

STEEL GTR

ACOU BASS

A.PIANO 1

81

DRUMS

JAZZ GTR

STEEL GTR

ACOU BASS

A.PIANO 1

84

DRUMS

JAZZ GTR

STEEL GTR

ACOU BASS

A.PIANO 1

87

DRUMS

JAZZ GTR

STEEL GTR

ACOU BASS

A.PIANO 1

90

DRUMS

JAZZ GTR

STEEL GTR

ACOU BASS

A.PIANO 1

DRUMS

Onbekende Nederlandse Songs Diversen - Roos Zonder I

♩ = 92,000549

3

8

13

18

23

28

33

38

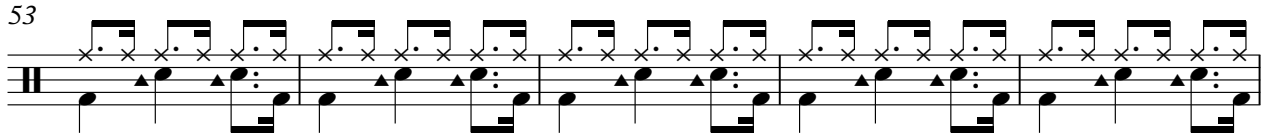
43

48

V.S.

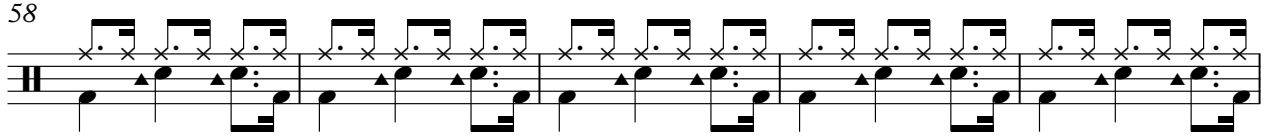
DRUMS

53



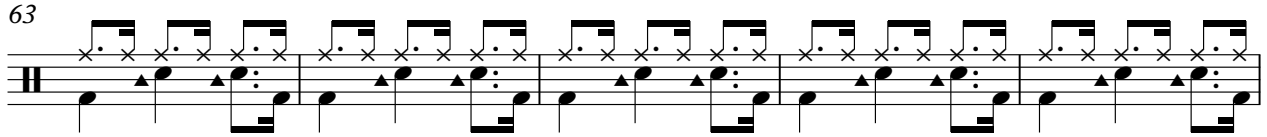
Musical notation for drum part 53-57. It consists of five measures of music on a single staff. The notation includes various drum symbols: 'x' for cymbals, '▲' for snare, and '●' for bass drum. The rhythm is a consistent pattern of eighth notes.

58



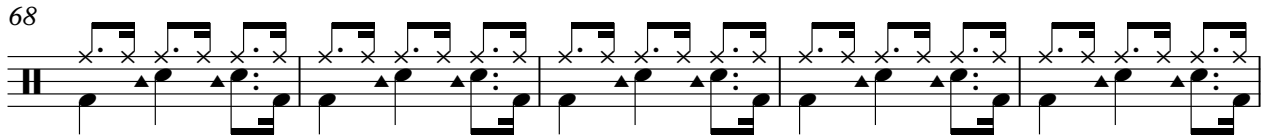
Musical notation for drum part 58-62. It consists of five measures of music on a single staff, continuing the drum pattern from the previous section.

63



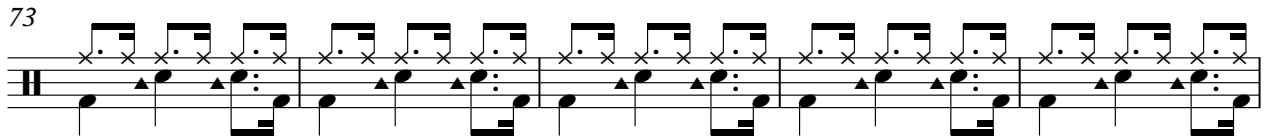
Musical notation for drum part 63-67. It consists of five measures of music on a single staff, continuing the drum pattern.

68



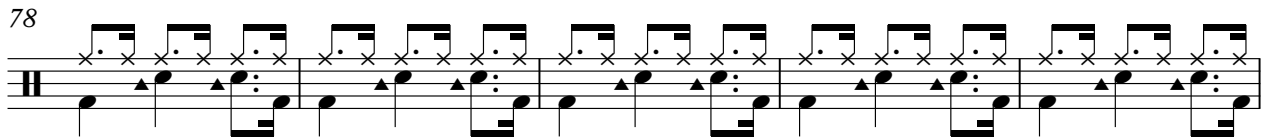
Musical notation for drum part 68-72. It consists of five measures of music on a single staff, continuing the drum pattern.

73



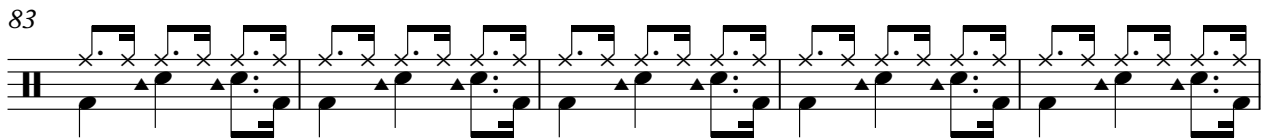
Musical notation for drum part 73-77. It consists of five measures of music on a single staff, continuing the drum pattern.

78



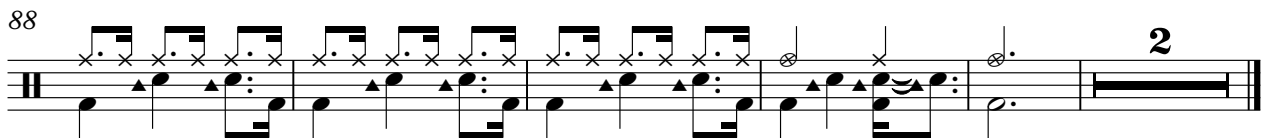
Musical notation for drum part 78-82. It consists of five measures of music on a single staff, continuing the drum pattern.

83



Musical notation for drum part 83-87. It consists of five measures of music on a single staff, continuing the drum pattern.

88



Musical notation for drum part 88-92. It consists of five measures of music on a single staff. The final measure contains a double bar line and the number '2', indicating a double bar line.

♩ = 92,000549

3

8

16

25

30

37

44

52

59

66

Detailed description: This is a guitar score for a jazz piece. It begins with a tempo marking of 92,000549 and a 3/4 time signature. The first staff contains a 3-measure rest, followed by a melodic line with eighth-note patterns and some chromaticism. The subsequent staves (8, 16, 25, 30, 37, 44, 52, 59, 66) are primarily harmonic, featuring various chords and chord voicings, some with ties and slurs. The notation includes standard musical symbols such as stems, beams, and accidentals.

2

71

JAZZ GTR

78

86

♩ = 92,000549

3

9

15

21

27

33

39

45

51

57

Detailed description: This is a guitar tab for a piece of music. It consists of ten staves of music in 3/4 time. The tempo is marked as ♩ = 92,000549. The first staff starts with a whole rest followed by a triplet of eighth notes. The subsequent staves contain various chords and rhythmic patterns, including eighth and sixteenth notes. The key signature changes from one flat to one sharp and back to one flat. The piece ends with a double bar line on the final staff.

63



69



75



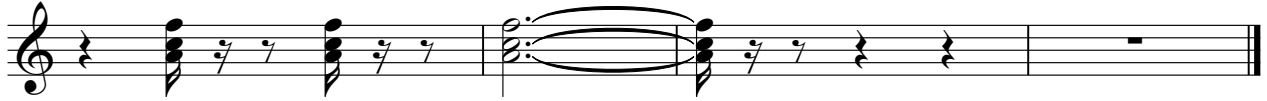
81



87



91



♩ = 92,000549

3

9

14

19

25

30

35

41

46

51

V.S.

57



62



67



73



78



83



88



♩ = 92,000549

3

12

22

32

42

52

62

72

82

88

2