

Onbekende Rock `n Roll SongsDiversen - Simon Say`s

♩ = 170,000565

ALTO SAX

DRUMS

PRG.CHANGE

ACOUBASS

A.PIANO

3

DRUMS

PRG.CHANGE

ACOUBASS

A.PIANO

4

DRUMS

PRG.CHANGE

TAB

ACOUBASS

A.PIANO

5

DRUMS

PRG.CHANGE

TAB

ACOUBASS

A.PIANO

6

DRUMS

PRG.CHANGE

TAB

ACOUBASS

A.PIANO

7

DRUMS

PRG.CHANGE

T
A
B

ACOUBASS

A.PIANO

Detailed description: This system covers measures 7 and 8. The drum part features a consistent pattern of eighth notes on the snare and bass drum. The guitar part (TAB) shows fret numbers 21, 19, and 17. The acoustic bass part has a simple line of notes. The acoustic piano part consists of a steady eighth-note accompaniment.

8

DRUMS

PRG.CHANGE

T
A
B

ACOUBASS

A.PIANO

Detailed description: This system covers measures 9 and 10. The drum part continues with the same eighth-note pattern. The guitar part (TAB) shows fret numbers 21, 19, 14, and 17. The acoustic bass part has a simple line of notes. The acoustic piano part continues with the eighth-note accompaniment.

10

ALTO SAX

DRUMS

PRG.CHANGE

T
A
B

ACOUBASS

A.PIANO

Detailed description: This system covers measures 11 and 12. The alto sax part enters in measure 11 with a melodic line. The drum part continues with the eighth-note pattern. The guitar part (TAB) shows fret numbers 17, 9, 10, and 7. The acoustic bass part has a simple line of notes. The acoustic piano part continues with the eighth-note accompaniment.

12

ALTO SAX

DRUMS

PRG.CHANGE

ACOUBASS

A.PIANO

7 7 7 9 7 5 5

14

ALTO SAX

DRUMS

PRG.CHANGE

ACOUBASS

A.PIANO

9 9 9 10 9 7 7

16

ALTO SAX

DRUMS

PRG.CHANGE

ACOUBASS

A.PIANO

18

ALTO SAX

DRUMS

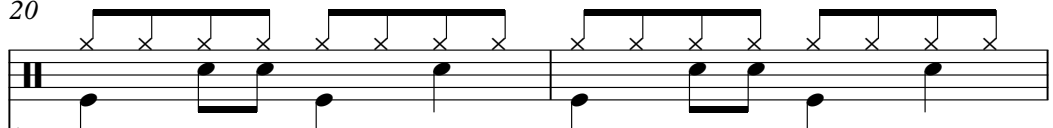
PRG.CHANGE

ACOUBASS

A.PIANO

20

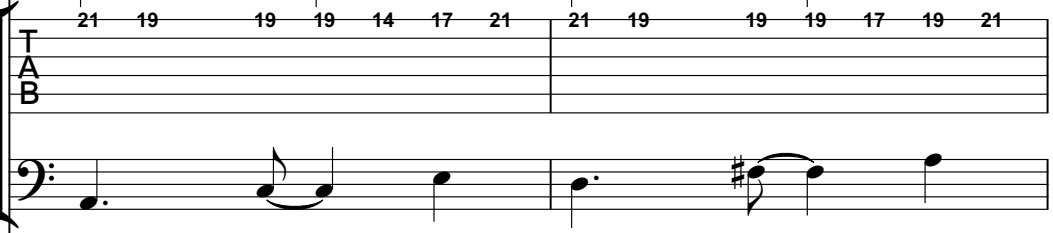
DRUMS




PRG.CHANGE

TAB

ACOUBASS



A.PIANO



Detailed description: This system covers measures 20 and 21. The drums part features a consistent pattern of eighth notes on the snare and bass drum. The guitar TAB part shows fret numbers 21, 19, 19, 19, 14, 17, 21 for measure 20, and 21, 19, 19, 19, 17, 19, 21 for measure 21. The acoustic bass part has a melodic line with a sharp sign in measure 21. The acoustic piano part consists of a steady eighth-note chordal accompaniment.

22

DRUMS



PRG.CHANGE

TAB

ACOUBASS



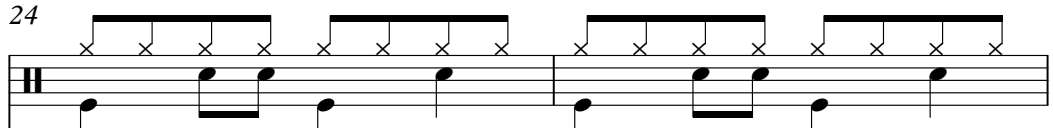
A.PIANO



Detailed description: This system covers measures 22 and 23. The drums part continues with the same eighth-note pattern. The guitar TAB part shows fret numbers 12, 12, 21, 21, 19, 19, 17, 17, 19, 21 for measure 22, and 12, 21, 21, 19, 19, 17, 17, 19, 21 for measure 23. The acoustic bass part has a melodic line with a sharp sign in measure 23. The acoustic piano part continues with the eighth-note accompaniment.

24

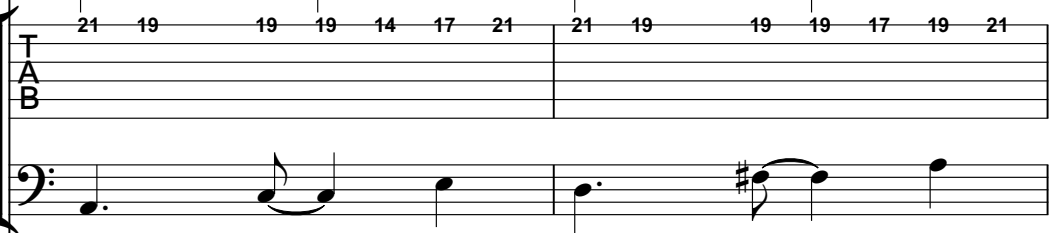
DRUMS




PRG.CHANGE

TAB

ACOUBASS



A.PIANO



Detailed description: This system covers measures 24 and 25. The drums part continues with the same eighth-note pattern. The guitar TAB part shows fret numbers 21, 19, 19, 19, 14, 17, 21 for measure 24, and 21, 19, 19, 19, 17, 19, 21 for measure 25. The acoustic bass part has a melodic line with a sharp sign in measure 25. The acoustic piano part continues with the eighth-note accompaniment.

26

ALTO SAX

DRUMS

PRG.CHANGE
T
A
B

ACOU BASS

A.PIANO

28

DRUMS

PRG.CHANGE
T
A
B

ACOU BASS

A.PIANO

29

ALTO SAX

DRUMS

PRG.CHANGE
T
A
B

ACOU BASS

A.PIANO

30

DRUMS

PRG.CHANGE
T
A
B

ACOU BASS

A.PIANO

31

ALTO SAX

DRUMS

PRG.CHANGE

ACOUBASS

A.PIANO

32

DRUMS

PRG.CHANGE

ACOUBASS

A.PIANO

34

ALTO SAX

DRUMS

PRG.CHANGE

ACOUBASS

A.PIANO

35

DRUMS

PRG.CHANGE

ACOUBASS

A.PIANO

36

ALTO SAX

DRUMS

PRG.CHANGE

ACOUBASS

A.PIANO

37

DRUMS

PRG.CHANGE

ACOUBASS

A.PIANO

38

ALTO SAX

DRUMS

PRG.CHANGE
T
A
B

ACOU BASS

A.PIANO

39

ALTO SAX

DRUMS

PRG.CHANGE
T
A
B

ACOU BASS

A.PIANO

41

ALTO SAX

DRUMS

PRG.CHANGE

ACOUBASS

A.PIANO

43

DRUMS

PRG.CHANGE

ACOUBASS

A.PIANO

45

DRUMS

PRG.CHANGE

ACOUBASS

A.PIANO

47

DRUMS

PRG.CHANGE

TAB

ACOUBASS

A.PIANO

49

ALTO SAX

DRUMS

PRG.CHANGE

TAB

ACOUBASS

A.PIANO

51

DRUMS

PRG.CHANGE

TAB

ACOUBASS

A.PIANO

52

ALTO SAX

DRUMS

PRG.CHANGE

ACOUBASS

A.PIANO

53

DRUMS

PRG.CHANGE

ACOUBASS

A.PIANO

54

ALTO SAX

DRUMS

PRG.CHANGE

ACOUBASS

A.PIANO

55

DRUMS

PRG.CHANGE

ACOUBASS

A.PIANO

56

ALTO SAX

DRUMS

PRG.CHANGE

ACOUBASS

A.PIANO

17 21 21 21 22 21 19 19

58

DRUMS

PRG.CHANGE

ACOUBASS

A.PIANO

19 19 19 21 19 17

59

ALTO SAX

DRUMS

PRG.CHANGE
T
A
B

ACOU BASS

A.PIANO

60

DRUMS

PRG.CHANGE
T
A
B

ACOU BASS

A.PIANO

61

ALTO SAX

DRUMS

PRG.CHANGE
T
A
B

ACOUBASS

A.PIANO

62

DRUMS

PRG.CHANGE
T
A
B

ACOUBASS

A.PIANO

63

ALTO SAX

DRUMS

PRG.CHANGE

ACOUBASS

A.PIANO

65

DRUMS

PRG.CHANGE

ACOUBASS

A.PIANO

66

DRUMS

PRG.CHANGE

ACOUBASS

A.PIANO

Detailed description of the musical score: The score is arranged in five systems, each containing five staves. The instruments are Alto Sax, Drums, PRG.CHANGE (T, A, B), Acou Bass, and A. Piano. Measure 63: Alto Sax has a melodic line with eighth notes. Drums play a complex pattern with eighth notes and rests. PRG.CHANGE shows fret numbers 12, 21, 25, 21, 19, 19, 17, 17, 19, 21. Acou Bass has a bass line with eighth notes. A. Piano has a complex chordal accompaniment with many beamed notes. Measure 65: Drums play a pattern with eighth notes and rests. PRG.CHANGE shows fret numbers 21, 19, 19, 19, 14, 17, 21. Acou Bass has a bass line with eighth notes. A. Piano has a complex chordal accompaniment. Measure 66: Drums play a pattern with eighth notes and rests. PRG.CHANGE shows fret numbers 21, 19, 19, 19, 17, 19, 21, 12, 12. Acou Bass has a bass line with eighth notes. A. Piano has a complex chordal accompaniment.

68

DRUMS

PRG.CHANGE

T
A
B

ACOUBASS

A.PIANO

21 21 19 19 17 17 19 21 21 19 19 19 14 17 21

70

DRUMS

PRG.CHANGE

T
A
B

ACOUBASS

A.PIANO

21 19 19 19 17 19 21 17 9 9 9 10 9 7

72

ALTO SAX

DRUMS

PRG.CHANGE

T
A
B

ACOUBASS

A.PIANO

7 7 7 7 9 7 5

74

ALTO SAX

DRUMS

PRG.CHANGE

ACOUBASS

A.PIANO

76

ALTO SAX

DRUMS

PRG.CHANGE

ACOUBASS

A.PIANO

78

ALTO SAX

DRUMS

PRG.CHANGE

ACOUBASS

A.PIANO

80

DRUMS

PRG.CHANGE

ACOUBASS

A.PIANO

82

DRUMS

PRG.CHANGE

ACOUBASS

A.PIANO

Detailed description of the musical score: The score is arranged in five systems. Each system contains five staves: ALTO SAX (treble clef), DRUMS (drum clef), PRG.CHANGE (guitar TAB), ACOUBASS (bass clef), and A.PIANO (treble clef).
- System 1 (measures 78-79): ALTO SAX has a melodic line with eighth notes and a half note. DRUMS has a pattern of eighth notes with 'x' marks above. PRG.CHANGE shows guitar TAB with fret numbers 5 and 12. ACOUBASS has a bass line with eighth notes. A.PIANO has a piano accompaniment with chords and eighth notes.
- System 2 (measures 80-81): DRUMS has a more complex pattern with 'x' marks and asterisks. PRG.CHANGE shows guitar TAB with fret numbers 21, 19, 17, 19, 21, 21, 19, 19, 14, 17, 21. ACOUBASS has a bass line with eighth notes. A.PIANO has a piano accompaniment with chords and eighth notes.
- System 3 (measures 82-83): DRUMS has a pattern with 'x' marks. PRG.CHANGE shows guitar TAB with fret numbers 21, 19, 19, 19, 17, 19, 21. ACOUBASS has a bass line with a half note and eighth notes. A.PIANO has a piano accompaniment with chords and eighth notes.

83

DRUMS

PRG.CHANGE

T
A
B

ACOUBASS

A.PIANO

84

DRUMS

PRG.CHANGE

T
A
B

ACOUBASS

A.PIANO

86

DRUMS

PRG.CHANGE

T
A
B

ACOUBASS

A.PIANO

88

ALTO SAX

DRUMS

PRG.CHANGE

ACOUBASS

A.PIANO

89

DRUMS

PRG.CHANGE

ACOUBASS

A.PIANO

90

ALTO SAX

DRUMS

PRG.CHANGE

ACOUBASS

A.PIANO

91

DRUMS

PRG.CHANGE

ACOUBASS

A.PIANO

92

ALTO SAX

DRUMS

PRG.CHANGE
T
A
B

ACOU BASS

A.PIANO

93

DRUMS

PRG.CHANGE
T
A
B

ACOU BASS

A.PIANO

95

ALTO SAX

DRUMS

PRG.CHANGE

ACOUBASS

A.PIANO

96

DRUMS

PRG.CHANGE

ACOUBASS

A.PIANO

97

ALTO SAX

DRUMS

PRG.CHANGE

ACOUBASS

A.PIANO

99

ALTO SAX

DRUMS

PRG.CHANGE

ACOUBASS

A.PIANO

100

ALTO SAX

DRUMS

PRG.CHANGE

ACOUBASS

A.PIANO

102

ALTO SAX

DRUMS

PRG.CHANGE

ACOUBASS

A.PIANO

104

DRUMS

PRG.CHANGE

T
A
B

ACOUBASS

A.PIANO

Detailed description: This system covers measures 104 and 105. The drums part features a consistent pattern of eighth notes on the snare and bass drum. The guitar part shows a sequence of chords with fret numbers 9, 7, 5, 7, 7, 7, 5 in the first measure and 7, 5, 0, 0, 7, 5, 7, 5 in the second. The acoustic bass and piano parts provide harmonic support with eighth-note chords and a melodic line.

106

DRUMS

PRG.CHANGE

T
A
B

ACOUBASS

A.PIANO

Detailed description: This system covers measures 106 and 107. The drum pattern continues. The guitar part has fret numbers 8, 9, 5, 4, 0, 0, 2, 0 in the first measure and 5, 5, 2, 0, 5, 5, 2, 0 in the second. The acoustic bass and piano parts continue their respective parts from the previous system.

108

DRUMS

PRG.CHANGE

T
A
B

ACOUBASS

A.PIANO

Detailed description: This system covers measures 108 and 109. The drum pattern remains. The guitar part has fret numbers 9, 5, 7, 7, 7, 5, 7 in the first measure and 0, 0, 1, 1, 2, 2, 4, 4 in the second. The acoustic bass and piano parts conclude the sequence.

110

ALTO SAX

DRUMS

PRG.CHANGE

ACOUBASS

A.PIANO

5 5 21 21 21 22 21 19 19

112

ALTO SAX

DRUMS

PRG.CHANGE

ACOUBASS

A.PIANO

19 19 19 21 19 17 17

114

DRUMS

PRG.CHANGE

TAB

ACOUBASS

A.PIANO

21 21 21 22 21 19

Detailed description: This system covers measures 114 and 115. The drums part features a consistent pattern of eighth notes on the snare and bass drum. The guitar TAB part shows fret numbers 21, 21, 21, 22, 21, and 19. The acoustic bass line consists of a few notes, including a half note with a sharp sign. The piano accompaniment features a complex texture with many beamed notes and rests.

115

ALTO SAX

DRUMS

PRG.CHANGE

TAB

ACOUBASS

A.PIANO

19

Detailed description: This system covers measures 115 and 116. It introduces an Alto Saxophone part with a melodic line. The drum pattern continues. The guitar TAB part has a fret number of 19. The acoustic bass line has a half note with a sharp sign. The piano accompaniment continues with its complex texture.

116

DRUMS

PRG.CHANGE

TAB

ACOUBASS

A.PIANO

19 19 19 21 19 17

Detailed description: This system covers measures 116 and 117. The drum pattern remains. The guitar TAB part shows fret numbers 19, 19, 19, 21, 19, and 17. The acoustic bass line has a half note with a sharp sign. The piano accompaniment concludes with a final melodic phrase.

117

ALTO SAX

DRUMS

PRG.CHANGE
T
A
B

ACOU BASS

A.PIANO

119

DRUMS

PRG.CHANGE
T
A
B

ACOU BASS

A.PIANO

120

ALTO SAX

DRUMS

PRG.CHANGE

ACOUBASS

A.PIANO

121

DRUMS

PRG.CHANGE

ACOUBASS

A.PIANO

122

ALTO SAX

DRUMS

PRG.CHANGE

ACOUBASS

A.PIANO

123

DRUMS

PRG.CHANGE

ACOUBASS

A.PIANO

125

ALTO SAX

DRUMS

PRG.CHANGE

ACOUBASS

A.PIANO

126

DRUMS

PRG.CHANGE

ACOUBASS

A.PIANO

127

ALTO SAX

DRUMS

PRG.CHANGE
T
A
B

ACOU BASS

A.PIANO

128

DRUMS

PRG.CHANGE
T
A
B

ACOU BASS

A.PIANO

129

ALTO SAX

DRUMS

PRG.CHANGE

ACOUBASS

A.PIANO

130

ALTO SAX

DRUMS

PRG.CHANGE

ACOUBASS

A.PIANO

132

ALTO SAX



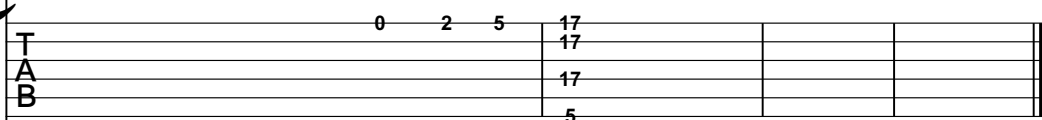
Musical notation for Alto Saxophone, featuring a treble clef and a key signature of one flat. The melody consists of eighth and quarter notes, with some notes beamed together. There are rests in the final two measures of the staff.

DRUMS



Musical notation for Drums, featuring a drum clef and a key signature of one flat. The notation shows a rhythmic pattern of eighth notes in the first four measures, followed by rests in the final two measures.

PRG.CHANGE



Guitar Tablature for PRG.CHANGE, showing fret numbers (0, 2, 5, 17) on the strings. The notation is arranged in a standard six-string format with a vertical brace on the left side.

ACOU BASS



Musical notation for Acoustic Bass, featuring a bass clef and a key signature of one flat. The notation shows a rhythmic pattern of eighth notes in the first four measures, followed by rests in the final two measures.

A.PIANO



Musical notation for A.PIANO, featuring a treble clef and a key signature of one flat. The notation shows a rhythmic pattern of eighth notes in the first four measures, followed by rests in the final two measures.

Onbekende Rock `n Roll Songs Diversen - Simon Say`s

ALTO SAX

♩ = 170,000565

8

13

18

30

36

41

53

60

72

77

8

8

8

2

3

2

8

8

8

88

2

95

101

8

113

120

127

131

2

DRUMS

Onbekende Rock `n Roll SongsDiversen - Simon Say`s

♩ = 170,000565

5

9

13

17

21

25

29

33

37

V.S.

Detailed description: This image shows a drum score for a rock and roll song. The score is written on ten staves, each representing a four-measure phrase. The first staff includes a tempo marking of 170,000565 and a 4/4 time signature. The notation uses 'x' marks to indicate hits on the snare and cymbals, and solid dots for the bass drum. The patterns are complex, featuring various rhythms and accents. The score concludes with a 'V.S.' (Verso) instruction.

DRUMS

41

Musical notation for drum set at measure 41. The staff is in 7/8 time. The notation shows a complex rhythmic pattern with various note values and rests, including a triplet of eighth notes in the first measure.

44

Musical notation for drum set at measure 44. The staff is in 7/8 time. The notation shows a complex rhythmic pattern with various note values and rests, including a triplet of eighth notes in the first measure.

48

Musical notation for drum set at measure 48. The staff is in 7/8 time. The notation shows a complex rhythmic pattern with various note values and rests, including a triplet of eighth notes in the first measure.

52

Musical notation for drum set at measure 52. The staff is in 7/8 time. The notation shows a complex rhythmic pattern with various note values and rests, including a triplet of eighth notes in the first measure.

56

Musical notation for drum set at measure 56. The staff is in 7/8 time. The notation shows a complex rhythmic pattern with various note values and rests, including a triplet of eighth notes in the first measure.

60

Musical notation for drum set at measure 60. The staff is in 7/8 time. The notation shows a complex rhythmic pattern with various note values and rests, including a triplet of eighth notes in the first measure.

64

Musical notation for drum set at measure 64. The staff is in 7/8 time. The notation shows a complex rhythmic pattern with various note values and rests, including a triplet of eighth notes in the first measure.

68

Musical notation for drum set at measure 68. The staff is in 7/8 time. The notation shows a complex rhythmic pattern with various note values and rests, including a triplet of eighth notes in the first measure.

72

Musical notation for drum set at measure 72. The staff is in 7/8 time. The notation shows a complex rhythmic pattern with various note values and rests, including a triplet of eighth notes in the first measure.

76

Musical notation for drum set at measure 76. The staff is in 7/8 time. The notation shows a complex rhythmic pattern with various note values and rests, including a triplet of eighth notes in the first measure.

DRUMS

80

Musical notation for drum set at measure 80. The top staff shows a snare drum pattern with eighth notes and a starburst. The bottom staff shows a bass drum pattern with quarter notes.

84

Musical notation for drum set at measure 84. The top staff shows a snare drum pattern with eighth notes. The bottom staff shows a bass drum pattern with quarter notes and a half note.

88

Musical notation for drum set at measure 88. The top staff shows a snare drum pattern with eighth notes and a starburst. The bottom staff shows a bass drum pattern with quarter notes.

92

Musical notation for drum set at measure 92. The top staff shows a snare drum pattern with eighth notes and a starburst. The bottom staff shows a bass drum pattern with quarter notes and a half note.

96

Musical notation for drum set at measure 96. The top staff shows a snare drum pattern with eighth notes and a starburst. The bottom staff shows a bass drum pattern with quarter notes.

100

Musical notation for drum set at measure 100. The top staff shows a snare drum pattern with eighth notes and a starburst. The bottom staff shows a bass drum pattern with quarter notes and a half note.

103

Musical notation for drum set at measure 103. The top staff shows a snare drum pattern with eighth notes and a starburst. The bottom staff shows a bass drum pattern with quarter notes.

107

Musical notation for drum set at measure 107. The top staff shows a snare drum pattern with eighth notes and a starburst. The bottom staff shows a bass drum pattern with quarter notes and a half note.

111

Musical notation for drum set at measure 111. The top staff shows a snare drum pattern with eighth notes and a starburst. The bottom staff shows a bass drum pattern with quarter notes.

115

Musical notation for drum set at measure 115. The top staff shows a snare drum pattern with eighth notes and a starburst. The bottom staff shows a bass drum pattern with quarter notes and a half note.

V.S.

DRUMS

119

Musical notation for drum set at measure 119. The notation is on a single staff with a double bar line on the left. It features a series of eighth notes with 'x' marks above them, indicating cymbal hits. The notes are grouped in pairs across four measures.

123

Musical notation for drum set at measure 123. The notation is on a single staff with a double bar line on the left. It features a series of eighth notes with 'x' marks above them, indicating cymbal hits. There is a change in the pattern at measure 124, with a '6' written below the staff. The notation continues with eighth notes and cymbal hits across four measures.

127

Musical notation for drum set at measure 127. The notation is on a single staff with a double bar line on the left. It features a series of eighth notes with 'x' marks above them, indicating cymbal hits. The notation continues with eighth notes and cymbal hits across four measures.

131

Musical notation for drum set at measure 131. The notation is on a single staff with a double bar line on the left. It features a series of eighth notes with 'x' marks above them, indicating cymbal hits. The notation continues with eighth notes and cymbal hits across four measures, ending with a double bar line and a '2' written above the staff.

PRG.CHANGE

♩ = 170,000565

5

D	12	21	21 21 19	19 17	17 19 21	21 19 19	19 14 17	21
T		25						
A								
B								

5

T	21 19 19 19 17 19 21	12	12	21 21 19 19 17 17 19 21
A				
B				

8

T	21 19 19 19 14 17 21	21 19 19 19 17 19 21	17	9 9 9 10 9 7	7
A					
B					

12

T	7 7 7 9 7 5	5	9 9 9 10 9 7	7
A				
B				

16

T	7 7 7 9 7	5	12	21 21 19 19 17 17 19 21
A				
B				

20

T	21 19 19 19 14 17 21	21 19 19 19 17 19 21	12	12	21 21 19 19 17 17 19 21
A					
B					

24

T	21 19 19 19 14 17 21	21 19 19 19 17 19 21	17	9 9 9 10 9 7	7 7
A					
B					

28

T	7 7 7 9 7 5	5	9 9 9 10 9 7	7
A				
B				

32

T	7 7 7 9 7 5	5	9 9 9 10 9 7	7	7 7 7 9 7 5
A					
B					

36

T	5	9 9 9 10 9 7	7	7 7 7 9 7	5
A					
B					

V.S.

2
41

PRG.CHANGE

	12 14 17	17 17 14 12 17 17 14 12	19 19 17 17 17 14 12
T			
A			
B			

44

	17 14 12 9 14 12 9 7 12 9 7 5 9 7 5 2	7 5 5 2 2 0	0 7 5 7 5 7	7 5 7 7 5 7
T				
A				
B				

48

	9 7 9 12 9 12 14 17	17 21 21 21 22 21 19	19	19 19 19 21 19 17
T				
A				
B				

52

	17	21 21 21 22 21 19	19	19 19 19 21 19 17
T				
A				
B				

56

	17 21 21 21 22 21 19	19	19 19 19 21 19 17	17
T				
A				
B				

60

	21 21 21 22 21 19	19	19 19 19 21 19	12
T				
A				
B				

64

	21 21 19 19 17 17 19 21	21 19 19 19 14 17 21	21 19 19 19 17 19 21
T	25		
A			
B			

67

	12 12	21 21 19 19 17 17 19 21	21 19 19 19 14 17 21	21 19 19 19 17 19 21
T				
A				
B				

71

	17 9 9 9 10 9 7 7	7 7 7 9 7 5 5
T		
A		
B		

75

	9 9 9 10 9 7 7	7 7 7 9 7 5	12
T			
A			
B			

80

21 21 19 19 17	17 19 21	21 19 19 19 14 17 21	21 19 19 19 17 19 21	12	12
T					
A					
B					

84

21 21 19 19 17 17	19 21	21 19 19 19 14 17 21	21 19 19 19 17 19 21
T			
A			
B			

87

17	9 9 9 10 9 7	7 7	7 7 7 9 7 5	5
T				
A				
B				

91

9 9 9 10 9 7	7	7 7 7 9 7 5	5 9 9 9 10 9 7
T			
A			
B			

95

7	7 7 7 9 7 5	5	9 9 9 10 9 7	7
T				
A				
B				

100

7 7 7 9 7	5	5 5 2 0 5 5 2 0	9 7 5 7 7 7 5
T			
A			
B			

105

7 0 0 0 7 5 7 5	8 9 5 4 0 0 2 0	5 5 2 0 5 5 2 0
T		
A		
B		

108

9 5 7 7 7 5 7	0 0 1 1 2 2 4 4	5 5 21 21 21 22 21 19	19
T		0	
A			
B	0 0 1 1 2 2 4 4		

112

19 19 19 21 19 17	17	21 21 21 22 21 19	19
T			
A			
B			

116

19 19 19 21 19 17	17 9 9 9 10 9 7	7	7 7 7 9 7 5
T			
A			
B			

V.S.

4
120

PRG.CHANGE

5	9 9 9 10 9 7	7	7 7 7 9 7 5
T			
A			
B			

124

5 9 9 9 10 9 7	7	7 7 7 9 7 5	5
T			
A			
B			

128

9 9 9 10 9 7	7	7 7 7 9 7
T		
A		
B		

131

5	0 2 5	17	2
T		17	
A		17	
B		5	

♩ = 170,000565



6



11



16



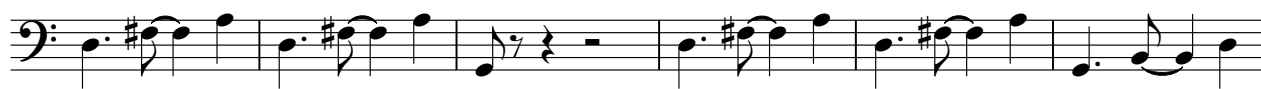
21



26



31



37



42



47



V.S.

Onbekende Rock `n Roll Songs Diversen - Simon Say`s

A.PIANO

♩ = 170,000565

4

6

8

10

13

15

17

20

22

Detailed description: The image shows a piano score for a piece in 4/4 time. The tempo is marked as ♩ = 170,000565. The score consists of ten staves of music, each starting with a measure number (4, 6, 8, 10, 13, 15, 17, 20, 22). The music is characterized by a complex, syncopated rhythmic pattern of eighth notes, often beamed in groups of four. The chords are primarily triads and dyads, with some chromatic movement. The overall feel is that of a fast, driving rock or pop instrumental.

V.S.

Musical score for A.PIANO, measures 24-43. The score is written in treble clef and consists of ten staves of music. The key signature is one sharp (F#). The tempo is marked 'A.PIANO'. The music features a complex rhythmic pattern with many sixteenth notes and rests, and a dense harmonic texture with many chords and intervals. The notation includes various accidentals, slurs, and dynamic markings.

Measures 24-43 are shown, with measure numbers 24, 26, 28, 30, 32, 34, 36, 38, 40, and 43 indicated at the beginning of their respective staves.

45



47



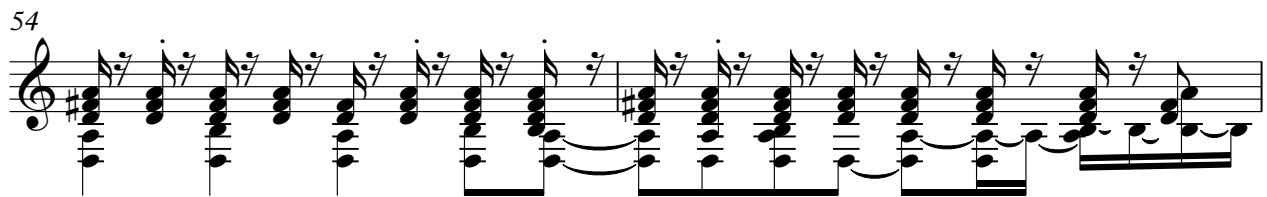
50



52



54



56



58



60



62



64



66



68



70



73



75



77



80



82



84



86



89

91

93

95

97

99

101

104

106

108

Musical score for A.PIANO, measures 111-130. The score is written in treble clef with a key signature of one sharp (F#). The music features a complex, rhythmic accompaniment with frequent sixteenth-note patterns and chords. The notation includes various articulations such as slurs, ties, and accents. The piece concludes with a final chord in measure 130.

111

113

115

117

120

122

124

126

128

130

131

3