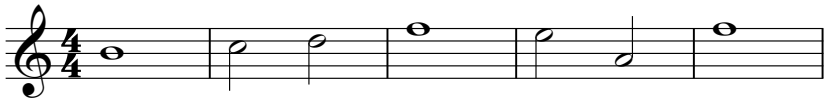


Orion - Eternity

♩ = 140,000137

Track 1



6

Track 1



Track 2



Track 3



10

Track 2



Track 3



12

Track 2



Track 3



14

Track 2

Track 3

16

Track 4

Track 2

Track 3

18

Track 4

Track 2

Track 3

20

Track 4

Track 2

Track 3

22

Track 4



Track 2



Track 3



24

Track 1



Track 4



Track 2



Track 3



26

Track 1



Track 4



Track 2



Track 3



28

Track 1

Track 4

Track 2

Track 3

The musical score for measures 28-29 consists of four tracks. Track 1 and Track 4 play a simple melody: a quarter note G4, a quarter note A4, and a whole note B4. Track 2 and Track 3 play a complex rhythmic accompaniment. Track 2 starts with a quarter rest, followed by eighth notes G4, A4, B4, and A4. Track 3 starts with an eighth rest, followed by eighth notes G4, A4, B4, and A4. The pattern repeats for the second measure.

30

Track 1

Track 4

Track 2

Track 3

The musical score for measures 30-31 consists of four tracks. Track 1 and Track 4 play a simple melody: a quarter note G4, a quarter note A4, and a whole note B4. Track 2 and Track 3 play a complex rhythmic accompaniment. Track 2 starts with a quarter rest, followed by eighth notes G4, A4, B4, and A4. Track 3 starts with an eighth rest, followed by eighth notes G4, A4, B4, and A4. The pattern repeats for the second measure.

32

Track 1

Track 13

Track 4

Track 2

Track 3

Detailed description: This block contains the musical notation for measures 32-33. Track 1 (treble clef) has a whole note chord in the first measure and a whole note chord in the second. Track 13 (bass clef) has a whole rest in the first measure and a rhythmic pattern of eighth notes with accents in the second. Track 4 (treble clef) has a whole note chord in the first measure and a whole note chord in the second. Track 2 (treble clef) has a continuous eighth-note pattern with accents. Track 3 (treble clef) has a continuous eighth-note pattern with accents.

34

Track 1

Track 13

Track 4

Track 2

Track 3

Detailed description: This block contains the musical notation for measures 34-35. Track 1 (treble clef) has a whole note chord in the first measure, a whole note chord in the second, and a whole note chord in the third. Track 13 (bass clef) has a rhythmic pattern of eighth notes with accents in the first measure, a rhythmic pattern of eighth notes with accents in the second, and a rhythmic pattern of eighth notes with accents in the third. Track 4 (treble clef) has a whole note chord in the first measure, a whole note chord in the second, and a whole note chord in the third. Track 2 (treble clef) has a continuous eighth-note pattern with accents. Track 3 (treble clef) has a continuous eighth-note pattern with accents.

36

Track 1

Track 13

Track 4

Track 2

Track 3

38

Track 1

Track 13

Track 4

Track 2

Track 3

40

Musical score for tracks 10, 1, 13, 4, 2, and 3 starting at measure 40. Track 10 (drums) shows a snare drum hit at the start of the second measure, followed by a pattern of eighth notes. Track 1 (treble clef) has a whole note chord in the first measure and a whole note chord in the second. Track 13 (bass clef) has a complex rhythmic pattern of eighth and sixteenth notes. Track 4 (treble clef) has a whole note chord in the first measure and a whole note chord in the second. Track 2 (treble clef) has a continuous eighth-note pattern. Track 3 (treble clef) has a continuous eighth-note pattern.

42

Musical score for tracks 10, 1, 13, 4, 2, and 3 starting at measure 42. Track 10 (drums) shows a snare drum hit at the start of the second measure, followed by a pattern of eighth notes. Track 1 (treble clef) has a whole note chord in the first measure and a whole note chord in the second. Track 13 (bass clef) has a complex rhythmic pattern of eighth and sixteenth notes. Track 4 (treble clef) has a whole note chord in the first measure and a whole note chord in the second. Track 2 (treble clef) has a continuous eighth-note pattern. Track 3 (treble clef) has a continuous eighth-note pattern.

44

Track 10

Track 1

Track 13

Track 4

Track 2

Track 3

Detailed description: This block shows a musical score for six tracks starting at measure 44. Track 10 is a drum track with a snare drum pattern. Track 1 is a vocal line with two notes. Track 13 is a bass line with eighth notes. Track 4 is a vocal line with two notes. Track 2 is a guitar track with eighth notes. Track 3 is a guitar track with eighth notes.

46

Track 10

Track 1

Track 13

Track 4

Track 2

Track 3

Detailed description: This block shows a musical score for six tracks starting at measure 46. Track 10 is a drum track with a snare drum pattern. Track 1 is a vocal line with two notes. Track 13 is a bass line with eighth notes. Track 4 is a vocal line with two notes. Track 2 is a guitar track with eighth notes. Track 3 is a guitar track with eighth notes.

48

Track 10

Track 1

Track 13

Track 4

Track 2

Track 3

Detailed description: This block contains the musical notation for measures 48-49. Track 10 (drums) features a snare drum on the first and third beats of each measure, with a hi-hat on the second and fourth. Track 1 (treble clef) has a whole note chord on the first beat and a whole note chord on the third. Track 13 (bass clef) has a complex rhythmic pattern of eighth and sixteenth notes. Track 4 (treble clef) has a whole note chord on the first beat and a whole note chord on the third. Track 2 (treble clef) has a continuous eighth-note pattern. Track 3 (treble clef) has a continuous eighth-note pattern.

50

Track 10

Track 1

Track 13

Track 4

Track 2

Track 3

Detailed description: This block contains the musical notation for measures 50-51. Track 10 (drums) features a snare drum on the first and third beats of each measure, with a hi-hat on the second and fourth. Track 1 (treble clef) has a whole note chord on the first beat and a whole note chord on the third. Track 13 (bass clef) has a complex rhythmic pattern of eighth and sixteenth notes. Track 4 (treble clef) has a whole note chord on the first beat and a whole note chord on the third. Track 2 (treble clef) has a continuous eighth-note pattern. Track 3 (treble clef) has a continuous eighth-note pattern.

52

Track 10

Track 1

Track 13

Track 4

Track 2

Track 3

Detailed description: This block contains the musical notation for measures 52-53. Track 10 is a drum track with a snare drum pattern. Track 1 is a vocal line with two notes. Track 13 is a bass line with eighth notes. Track 4 is a vocal line with two notes. Track 2 is a guitar line with eighth notes. Track 3 is a guitar line with eighth notes.

54

Track 10

Track 1

Track 13

Track 4

Track 2

Track 3

Detailed description: This block contains the musical notation for measures 54-55. Track 10 is a drum track with a snare drum pattern. Track 1 is a vocal line with two notes. Track 13 is a bass line with eighth notes. Track 4 is a vocal line with two notes. Track 2 is a guitar line with eighth notes. Track 3 is a guitar line with eighth notes.

56

Track 10

Track 1

Track 13

Track 4

Track 2

Track 3

58

Track 10

Track 13

Track 4

Track 2

Track 3

60

Track 10

Track 13

Track 4

Track 2

Track 3

62

Track 10

Track 13

Track 4

Track 2

Track 3

64

Track 10

Track 1

Track 13

Track 4

Track 2

Track 3

Detailed description: This block contains a musical score for measures 64-65. Track 10 (drums) features a snare drum pattern with two accents marked by 'x' symbols. Track 1 (treble clef) has a whole note chord in the first measure and a whole note chord in the second. Track 13 (bass clef) has a complex rhythmic pattern of eighth and sixteenth notes with accents. Track 4 (treble clef) has a half note chord in the first measure and a whole note chord in the second. Track 2 (treble clef) has a continuous eighth-note pattern with accents. Track 3 (treble clef) has a continuous eighth-note pattern with accents.

66

Track 10

Track 1

Track 13

Track 2

Track 3

Detailed description: This block contains a musical score for measures 66-67. Track 10 (drums) continues the snare drum pattern with two accents marked by 'x' symbols. Track 1 (treble clef) has a half note chord in the first measure and a whole note chord in the second. Track 13 (bass clef) continues the complex rhythmic pattern of eighth and sixteenth notes with accents. Track 2 (treble clef) continues the eighth-note pattern with accents. Track 3 (treble clef) continues the eighth-note pattern with accents.

68

Track 10

Track 1

Track 13

Track 2

Track 3

70

Track 1

Track 13

Track 2

Track 3

72

Track 1



Track 13



Track 2



Track 3



76

Track 1



♩ = 140,000137

40

44

48

52

56

60

64

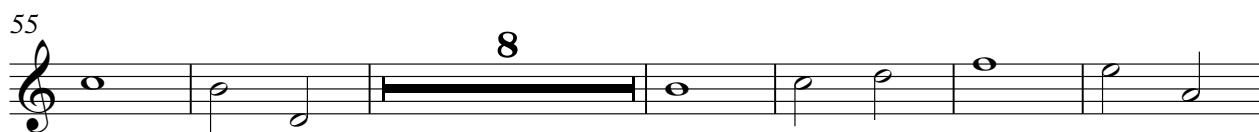
67

13

Track 1

Orion - Eternity

♩ = 140,000137



♩ = 140,000137

32



35



38



40



42



45



48



50



53



56



V.S.

58



61



64



66



69



71




Track 4

Orion - Eternity

♩ = 140,000137

16



23



31



39



47



55



61

17



Track 2

Orion - Eternity

♩ = 140,000137
8

11

13

15

17

19

21

23

25

27

V.S.



49



51



53



55



57



59



61



63



65



67



V.S.

69



71



9

Track 3

Orion - Eternity

♩ = 140,000137
8

11

13

15

17

19

21

23

25

27

V.S.

49

51

53

55

57

59

61

63

65

67

V.S.

69



71



9