

New Found Glory - My Heart Will Go On

♩ = 102,000053

TabIt MIDI - Track 1

TabIt MIDI - Track 2

TabIt MIDI - Track 3

This system contains the first three tracks of the MIDI score. Track 1 (treble clef) features sustained chords in the right hand and bass notes in the left hand. Track 2 (treble clef) contains a melodic line with various rhythmic values and accidentals. Track 3 (bass clef) provides a bass line with sustained notes and some rhythmic movement.

5

TabIt MIDI - Track 1

TabIt MIDI - Track 2

TabIt MIDI - Track 3

This system contains the second three tracks of the MIDI score, starting at measure 5. Track 1 continues with sustained chords. Track 2 continues the melodic line. Track 3 continues the bass line.

8

TabIt MIDI - Track 1

TabIt MIDI - Track 2

TabIt MIDI - Track 3

This system contains the third three tracks of the MIDI score, starting at measure 8. Track 1 continues with sustained chords. Track 2 continues the melodic line. Track 3 continues the bass line.

11

TabIt MIDI - Track 5

TabIt MIDI - Track 1

TabIt MIDI - Track 2

TabIt MIDI - Track 3

12

TabIt MIDI - Track 4

TabIt MIDI - Track 5

TabIt MIDI - Track 1

TabIt MIDI - Track 2

TabIt MIDI - Track 3

13

TabIt MIDI - Track 4

TabIt MIDI - Track 5

TabIt MIDI - Track 1

TabIt MIDI - Track 2

TabIt MIDI - Track 3

14

TabIt MIDI - Track 4

TabIt MIDI - Track 5

TabIt MIDI - Track 1

TabIt MIDI - Track 2

TabIt MIDI - Track 3

15

TabIt MIDI - Track 4

TabIt MIDI - Track 5

TabIt MIDI - Track 1

TabIt MIDI - Track 2

TabIt MIDI - Track 3

16

TabIt MIDI - Track 4

TabIt MIDI - Track 5

TabIt MIDI - Track 1

TabIt MIDI - Track 2

TabIt MIDI - Track 3

17

TabIt MIDI - Track 4

TabIt MIDI - Track 5

TabIt MIDI - Track 1

TabIt MIDI - Track 2

TabIt MIDI - Track 3

18

TabIt MIDI - Track 4

TabIt MIDI - Track 5

TabIt MIDI - Track 1

TabIt MIDI - Track 2

TabIt MIDI - Track 3

19

TabIt MIDI - Track 4

TabIt MIDI - Track 5

TabIt MIDI - Track 1

TabIt MIDI - Track 2

TabIt MIDI - Track 3

20

TabIt MIDI - Track 4

TabIt MIDI - Track 5

TabIt MIDI - Track 1

TabIt MIDI - Track 2

TabIt MIDI - Track 3

21

TabIt MIDI - Track 4

TabIt MIDI - Track 5

TabIt MIDI - Track 1

TabIt MIDI - Track 2

TabIt MIDI - Track 3

22

TabIt MIDI - Track 4

TabIt MIDI - Track 5

TabIt MIDI - Track 1

TabIt MIDI - Track 2

TabIt MIDI - Track 3

Detailed description of the musical score for measures 22-23. The score consists of five tracks. Track 4 (Melody) is in G minor, starting with a half note G4, a quarter note Bb4, and a half note D5. Track 5 (Guitar) has a fretted melody with bends. Tracks 1, 2, and 3 provide harmonic support with chords and bass lines.

23

TabIt MIDI - Track 4

TabIt MIDI - Track 5

TabIt MIDI - Track 1

TabIt MIDI - Track 2

TabIt MIDI - Track 3

Detailed description of the musical score for measures 23-24. The score consists of five tracks. Track 4 (Melody) is in G major, starting with a half note G4, a quarter note B4, and a half note D5. Track 5 (Guitar) has a fretted melody with bends. Tracks 1, 2, and 3 provide harmonic support with chords and bass lines.

24

TabIt MIDI - Track 4

TabIt MIDI - Track 5

TabIt MIDI - Track 1

TabIt MIDI - Track 2

TabIt MIDI - Track 3

25

TabIt MIDI - Track 4

TabIt MIDI - Track 5

TabIt MIDI - Track 1

TabIt MIDI - Track 2

TabIt MIDI - Track 3

26

TabIt MIDI - Track 4

TabIt MIDI - Track 5

TabIt MIDI - Track 1

TabIt MIDI - Track 2

TabIt MIDI - Track 3

27

TabIt MIDI - Track 4

TabIt MIDI - Track 5

TabIt MIDI - Track 1

TabIt MIDI - Track 2

TabIt MIDI - Track 3

28

TabIt MIDI - Track 4

TabIt MIDI - Track 5

TabIt MIDI - Track 1

TabIt MIDI - Track 2

TabIt MIDI - Track 3

30

TabIt MIDI - Track 4

TabIt MIDI - Track 5

TabIt MIDI - Track 1

TabIt MIDI - Track 2

TabIt MIDI - Track 3

31

TabIt MIDI - Track 4

TabIt MIDI - Track 5

TabIt MIDI - Track 1

TabIt MIDI - Track 2

TabIt MIDI - Track 3

This musical score block covers measures 31 and 32. It consists of five tracks: Track 4 (Melody), Track 5 (Guitar Tab), Track 1 (Piano Right Hand), Track 2 (Piano Left Hand), and Track 3 (Bass). Measure 31 shows a melodic line in Track 4 with a quarter rest, followed by a quarter note. Track 5 features a complex guitar tab with various fretting and bending techniques. Tracks 1 and 2 play chords in a major key, while Track 3 provides a bass line. Measure 32 continues the melodic and harmonic progression.

32

TabIt MIDI - Track 4

TabIt MIDI - Track 5

TabIt MIDI - Track 1

TabIt MIDI - Track 2

TabIt MIDI - Track 3

This musical score block covers measures 33 and 34. It consists of five tracks: Track 4 (Melody), Track 5 (Guitar Tab), Track 1 (Piano Right Hand), Track 2 (Piano Left Hand), and Track 3 (Bass). Measure 33 shows a melodic line in Track 4 with a quarter note, followed by a quarter rest, and then a quarter note. Track 5 features a complex guitar tab with various fretting and bending techniques. Tracks 1 and 2 play chords in a major key, while Track 3 provides a bass line. Measure 34 continues the melodic and harmonic progression.

34

TabIt MIDI - Track 4

TabIt MIDI - Track 5

TabIt MIDI - Track 1

TabIt MIDI - Track 2

TabIt MIDI - Track 3

35

TabIt MIDI - Track 5

TabIt MIDI - Track 1

TabIt MIDI - Track 2

TabIt MIDI - Track 3

36

TabIt MIDI - Track 4

TabIt MIDI - Track 5

TabIt MIDI - Track 1

TabIt MIDI - Track 2

TabIt MIDI - Track 3

38

TabIt MIDI - Track 4

TabIt MIDI - Track 5

TabIt MIDI - Track 1

TabIt MIDI - Track 2

TabIt MIDI - Track 3

39

TabIt MIDI - Track 4

TabIt MIDI - Track 5

TabIt MIDI - Track 1

TabIt MIDI - Track 2

TabIt MIDI - Track 3

40

TabIt MIDI - Track 4

TabIt MIDI - Track 5

TabIt MIDI - Track 1

TabIt MIDI - Track 2

TabIt MIDI - Track 3

42

TabIt MIDI - Track 4

TabIt MIDI - Track 5

TabIt MIDI - Track 1

TabIt MIDI - Track 2

TabIt MIDI - Track 3

43

TabIt MIDI - Track 4

TabIt MIDI - Track 5

TabIt MIDI - Track 1

TabIt MIDI - Track 2

TabIt MIDI - Track 3

45

TabIt MIDI - Track 5

TabIt MIDI - Track 1

TabIt MIDI - Track 2

TabIt MIDI - Track 3

46

TabIt MIDI - Track 4

TabIt MIDI - Track 5

TabIt MIDI - Track 1

TabIt MIDI - Track 2

TabIt MIDI - Track 3

48

TabIt MIDI - Track 4

TabIt MIDI - Track 5

TabIt MIDI - Track 1

TabIt MIDI - Track 2

TabIt MIDI - Track 3

50

TabIt MIDI - Track 4

TabIt MIDI - Track 5

TabIt MIDI - Track 1

TabIt MIDI - Track 2

TabIt MIDI - Track 3

52

TabIt MIDI - Track 4

TabIt MIDI - Track 5

TabIt MIDI - Track 1

TabIt MIDI - Track 2

TabIt MIDI - Track 3

53

TabIt MIDI - Track 4

TabIt MIDI - Track 5

TabIt MIDI - Track 1

TabIt MIDI - Track 2

TabIt MIDI - Track 3

54

TabIt MIDI - Track 4

TabIt MIDI - Track 5

TabIt MIDI - Track 1

TabIt MIDI - Track 2

TabIt MIDI - Track 3

56

TabIt MIDI - Track 4

TabIt MIDI - Track 5

TabIt MIDI - Track 1

TabIt MIDI - Track 2

TabIt MIDI - Track 3

57

TabIt MIDI - Track 4

TabIt MIDI - Track 5

TabIt MIDI - Track 1

TabIt MIDI - Track 2

TabIt MIDI - Track 3

59

TabIt MIDI - Track 4

TabIt MIDI - Track 5

TabIt MIDI - Track 1

TabIt MIDI - Track 2

TabIt MIDI - Track 3

60

TabIt MIDI - Track 4

TabIt MIDI - Track 5

TabIt MIDI - Track 1

TabIt MIDI - Track 2

TabIt MIDI - Track 3

61

TabIt MIDI - Track 4

TabIt MIDI - Track 5

TabIt MIDI - Track 1

TabIt MIDI - Track 2

TabIt MIDI - Track 3

62

TabIt MIDI - Track 4

TabIt MIDI - Track 5

TabIt MIDI - Track 1

TabIt MIDI - Track 2

TabIt MIDI - Track 3

Detailed description of the musical score for measures 62-63: The score consists of five tracks. Track 4 (treble clef) contains a single whole note G4. Track 5 (guitar) features a complex rhythmic pattern with slurs and accents, primarily using eighth and sixteenth notes. Tracks 1 and 2 (treble clef) contain chords, with Track 2 having a sharp sign above the notes. Track 3 (bass clef) has a simple bass line with a few notes.

64

TabIt MIDI - Track 4

TabIt MIDI - Track 5

TabIt MIDI - Track 1

TabIt MIDI - Track 2

TabIt MIDI - Track 3

Detailed description of the musical score for measures 64-65: The score consists of five tracks. Track 4 (treble clef) contains a single whole note G4. Track 5 (guitar) features a complex rhythmic pattern with slurs and accents, primarily using eighth and sixteenth notes. Tracks 1 and 2 (treble clef) contain chords, with Track 2 having a sharp sign above the notes. Track 3 (bass clef) has a simple bass line with a few notes.

65

TabIt MIDI - Track 4

TabIt MIDI - Track 5

TabIt MIDI - Track 1

TabIt MIDI - Track 2

TabIt MIDI - Track 3

66

TabIt MIDI - Track 4

TabIt MIDI - Track 5

TabIt MIDI - Track 1

TabIt MIDI - Track 2

TabIt MIDI - Track 3

68

TabIt MIDI - Track 4

TabIt MIDI - Track 5

TabIt MIDI - Track 1

TabIt MIDI - Track 2

TabIt MIDI - Track 3

69

TabIt MIDI - Track 5

TabIt MIDI - Track 1

TabIt MIDI - Track 2

TabIt MIDI - Track 3

70

TabIt MIDI - Track 4

TabIt MIDI - Track 5

TabIt MIDI - Track 1

TabIt MIDI - Track 2

TabIt MIDI - Track 3

74

TabIt MIDI - Track 4

TabIt MIDI - Track 5

TabIt MIDI - Track 1

TabIt MIDI - Track 2

TabIt MIDI - Track 3

76

TabIt MIDI - Track 4

TabIt MIDI - Track 5

TabIt MIDI - Track 1

TabIt MIDI - Track 2

TabIt MIDI - Track 3

77

TabIt MIDI - Track 4

TabIt MIDI - Track 5

TabIt MIDI - Track 1

TabIt MIDI - Track 2

TabIt MIDI - Track 3

79

TabIt MIDI - Track 5

TabIt MIDI - Track 1

TabIt MIDI - Track 2

TabIt MIDI - Track 3

81

TabIt MIDI - Track 5

TabIt MIDI - Track 1

TabIt MIDI - Track 2

TabIt MIDI - Track 3

82

TabIt MIDI - Track 5

TabIt MIDI - Track 1

TabIt MIDI - Track 2

TabIt MIDI - Track 3

84

TabIt MIDI - Track 5

TabIt MIDI - Track 1

TabIt MIDI - Track 2

TabIt MIDI - Track 3

85

TabIt MIDI - Track 5

TabIt MIDI - Track 1

TabIt MIDI - Track 2

TabIt MIDI - Track 3

86

TabIt MIDI - Track 5

TabIt MIDI - Track 1

TabIt MIDI - Track 2

TabIt MIDI - Track 3

88

TabIt MIDI - Track 5

TabIt MIDI - Track 1

TabIt MIDI - Track 2

TabIt MIDI - Track 3

90

TabIt MIDI - Track 5

TabIt MIDI - Track 1

TabIt MIDI - Track 2

TabIt MIDI - Track 3

92

TabIt MIDI - Track 5

TabIt MIDI - Track 1

TabIt MIDI - Track 2

TabIt MIDI - Track 3

93

TabIt MIDI - Track 5

TabIt MIDI - Track 1

TabIt MIDI - Track 2

TabIt MIDI - Track 3

94

TabIt MIDI - Track 5

TabIt MIDI - Track 1

TabIt MIDI - Track 2

TabIt MIDI - Track 3

96

TabIt MIDI - Track 5

TabIt MIDI - Track 1

TabIt MIDI - Track 2

TabIt MIDI - Track 3

97

TabIt MIDI - Track 5

TabIt MIDI - Track 1

TabIt MIDI - Track 2

TabIt MIDI - Track 3

99

TabIt MIDI - Track 5

TabIt MIDI - Track 1

TabIt MIDI - Track 2

TabIt MIDI - Track 3

100

TabIt MIDI - Track 5

TabIt MIDI - Track 1

TabIt MIDI - Track 2

TabIt MIDI - Track 3

101

TabIt MIDI - Track 5

TabIt MIDI - Track 1

TabIt MIDI - Track 2

TabIt MIDI - Track 3

102

TabIt MIDI - Track 4

TabIt MIDI - Track 5

TabIt MIDI - Track 1

TabIt MIDI - Track 2

TabIt MIDI - Track 3

104

TabIt MIDI - Track 4

TabIt MIDI - Track 5

TabIt MIDI - Track 1

TabIt MIDI - Track 2

TabIt MIDI - Track 3

105

TabIt MIDI - Track 4

TabIt MIDI - Track 5

TabIt MIDI - Track 1

TabIt MIDI - Track 2

TabIt MIDI - Track 3

106

TabIt MIDI - Track 4

TabIt MIDI - Track 5

TabIt MIDI - Track 1

TabIt MIDI - Track 2

TabIt MIDI - Track 3

108

TabIt MIDI - Track 4

TabIt MIDI - Track 5

TabIt MIDI - Track 1

TabIt MIDI - Track 2

TabIt MIDI - Track 3

110

TabIt MIDI - Track 4

TabIt MIDI - Track 5

TabIt MIDI - Track 1

TabIt MIDI - Track 2

TabIt MIDI - Track 3

112

TabIt MIDI - Track 4

TabIt MIDI - Track 5

TabIt MIDI - Track 1

TabIt MIDI - Track 2

TabIt MIDI - Track 3

114

TabIt MIDI - Track 4

TabIt MIDI - Track 5

TabIt MIDI - Track 1

TabIt MIDI - Track 2

TabIt MIDI - Track 3

116

TabIt MIDI - Track 4

TabIt MIDI - Track 5

TabIt MIDI - Track 1

TabIt MIDI - Track 2

TabIt MIDI - Track 3

118

TabIt MIDI - Track 4

TabIt MIDI - Track 5

TabIt MIDI - Track 1

TabIt MIDI - Track 2

TabIt MIDI - Track 3

121

TabIt MIDI - Track 1

TabIt MIDI - Track 2

TabIt MIDI - Track 3

123

TabIt MIDI - Track 1

TabIt MIDI - Track 2

TabIt MIDI - Track 3

♩ = 102,000053

11

16

22

29

35

42

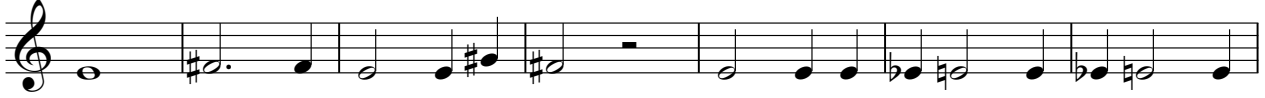
49

55

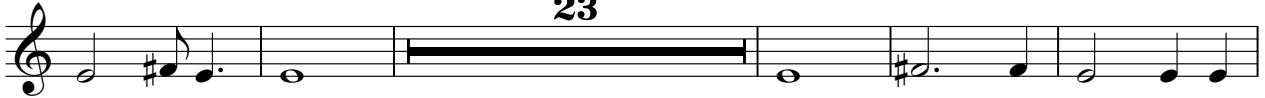
61

66

70



77



105



112



116



♩ = 102,000053

10

12

13

14

16

17

18

19

20

21

V.S.

22

24

25

26

28

30

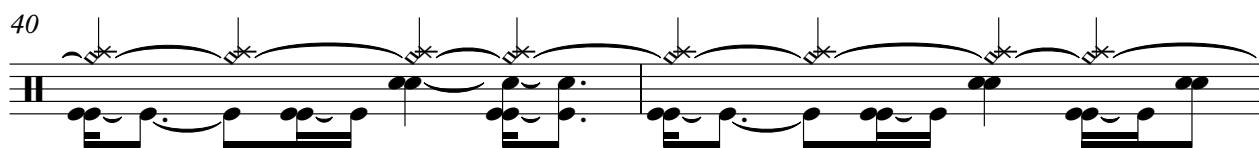
32

34

36

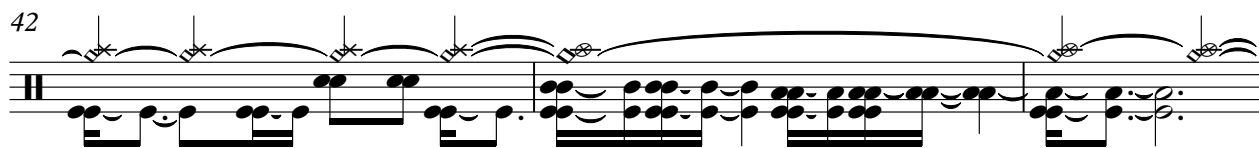
38

40



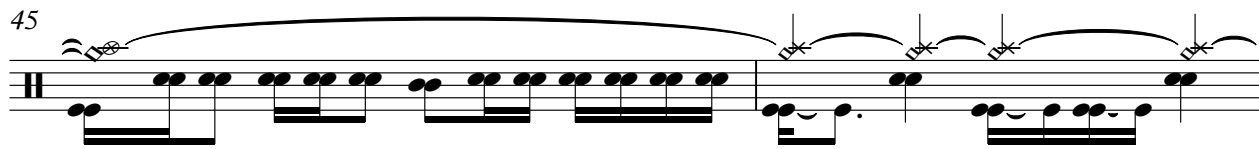
Musical notation for measure 40, featuring a guitar staff with a treble clef and a double bar line. The notation includes a series of eighth notes with slurs and accents, and a final chord.

42



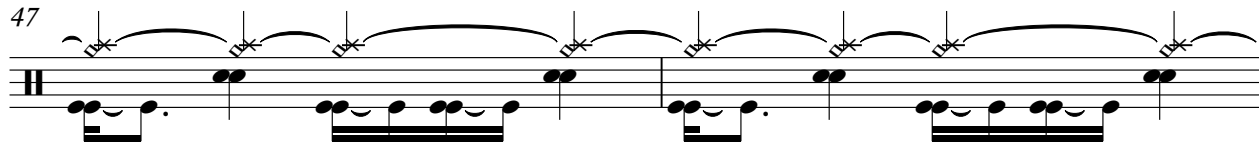
Musical notation for measure 42, featuring a guitar staff with a treble clef and a double bar line. The notation includes a series of eighth notes with slurs and accents, and a final chord.

45



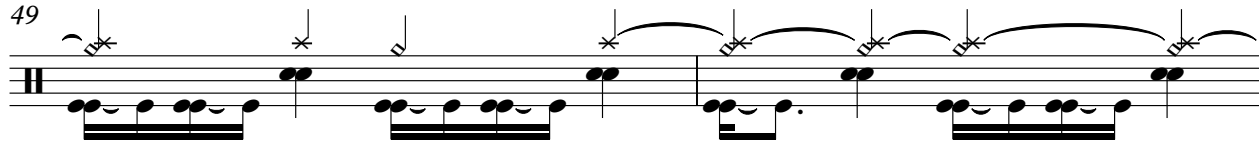
Musical notation for measure 45, featuring a guitar staff with a treble clef and a double bar line. The notation includes a series of eighth notes with slurs and accents, and a final chord.

47



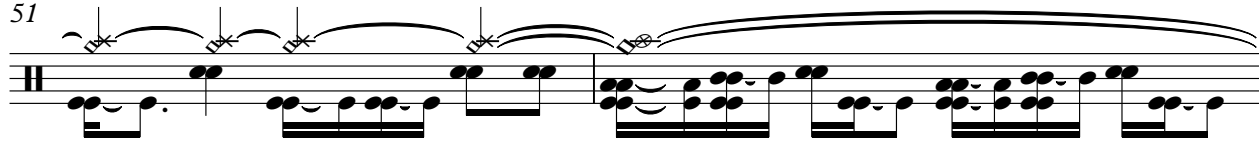
Musical notation for measure 47, featuring a guitar staff with a treble clef and a double bar line. The notation includes a series of eighth notes with slurs and accents, and a final chord.

49



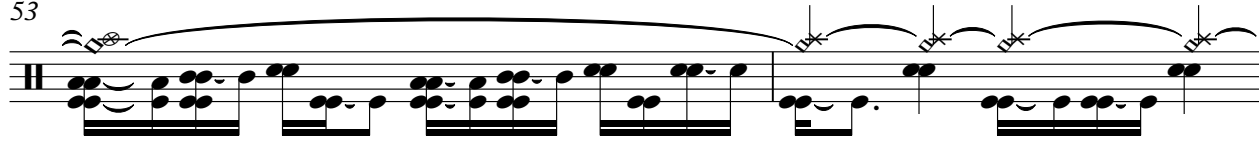
Musical notation for measure 49, featuring a guitar staff with a treble clef and a double bar line. The notation includes a series of eighth notes with slurs and accents, and a final chord.

51



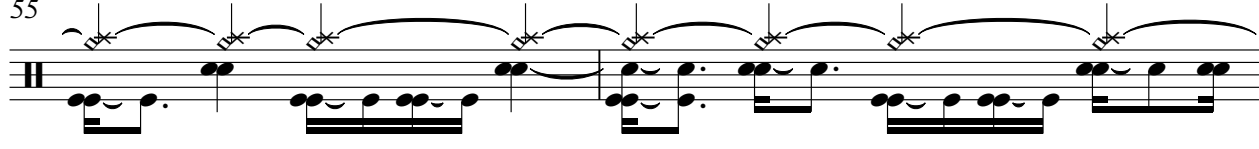
Musical notation for measure 51, featuring a guitar staff with a treble clef and a double bar line. The notation includes a series of eighth notes with slurs and accents, and a final chord.

53



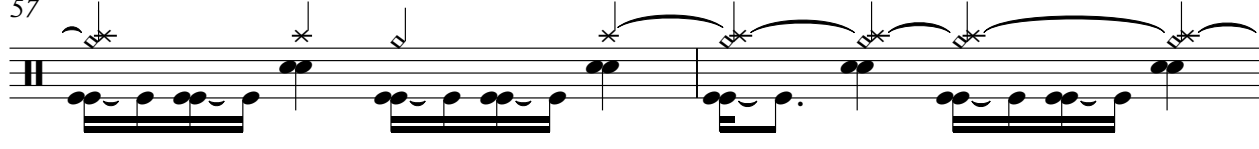
Musical notation for measure 53, featuring a guitar staff with a treble clef and a double bar line. The notation includes a series of eighth notes with slurs and accents, and a final chord.

55



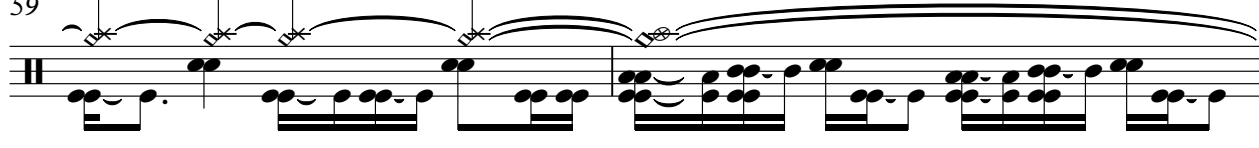
Musical notation for measure 55, featuring a guitar staff with a treble clef and a double bar line. The notation includes a series of eighth notes with slurs and accents, and a final chord.

57



Musical notation for measure 57, featuring a guitar staff with a treble clef and a double bar line. The notation includes a series of eighth notes with slurs and accents, and a final chord.

59



Musical notation for measure 59, featuring a guitar staff with a treble clef and a double bar line. The notation includes a series of eighth notes with slurs and accents, and a final chord.

V.S.

61

63

65

67

69

71

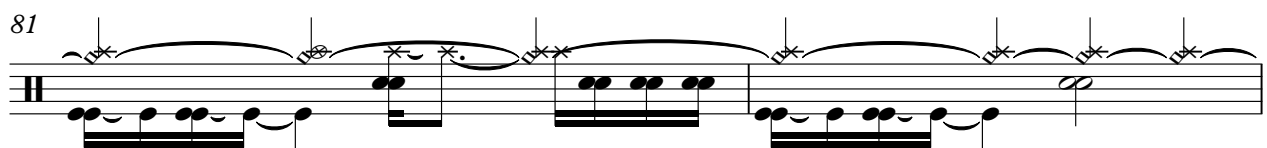
73

75

77

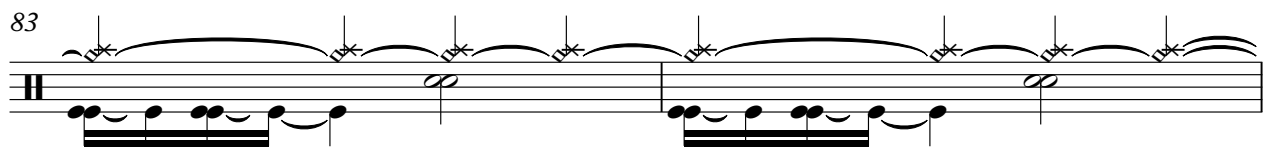
79

81



Musical notation for measure 81, featuring a guitar staff with a treble clef and a double bar line. The notation includes a series of eighth notes with slurs and accents, and a final quarter note with a fermata.

83



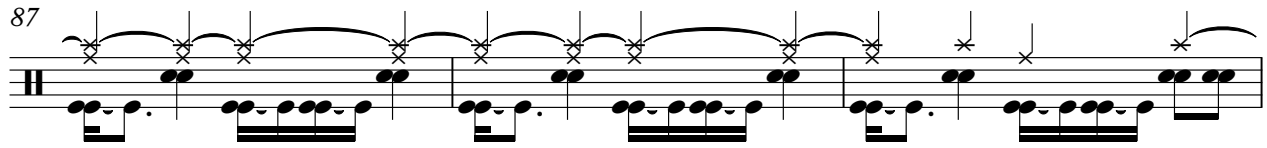
Musical notation for measure 83, featuring a guitar staff with a treble clef and a double bar line. The notation includes a series of eighth notes with slurs and accents, and a final quarter note with a fermata.

85



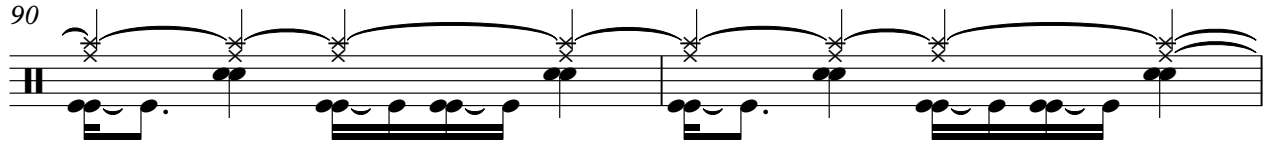
Musical notation for measure 85, featuring a guitar staff with a treble clef and a double bar line. The notation includes a series of eighth notes with slurs and accents, and a final quarter note with a fermata.

87



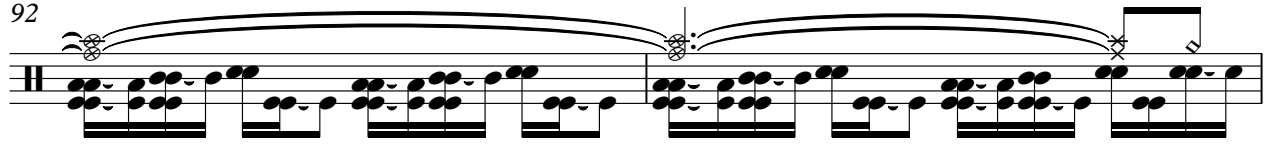
Musical notation for measure 87, featuring a guitar staff with a treble clef and a double bar line. The notation includes a series of eighth notes with slurs and accents, and a final quarter note with a fermata.

90



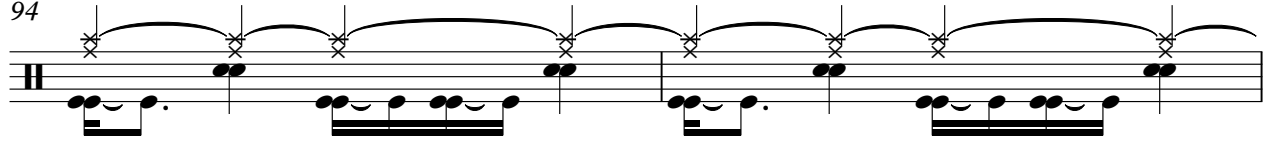
Musical notation for measure 90, featuring a guitar staff with a treble clef and a double bar line. The notation includes a series of eighth notes with slurs and accents, and a final quarter note with a fermata.

92



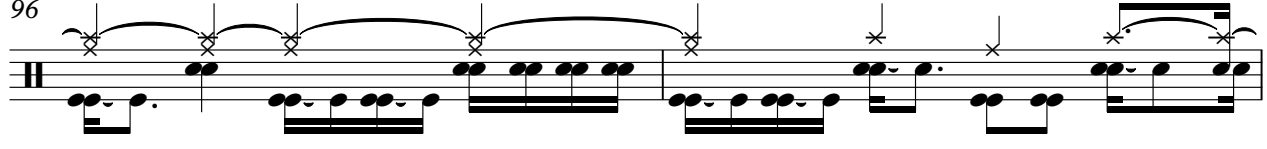
Musical notation for measure 92, featuring a guitar staff with a treble clef and a double bar line. The notation includes a series of eighth notes with slurs and accents, and a final quarter note with a fermata.

94



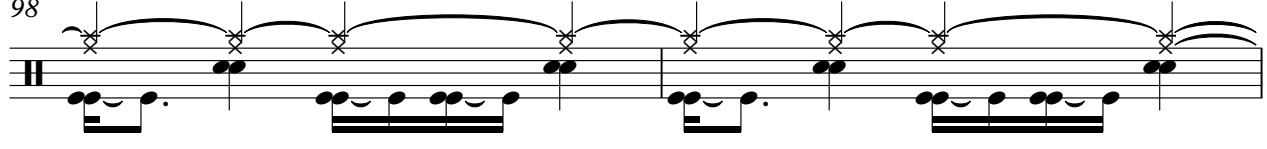
Musical notation for measure 94, featuring a guitar staff with a treble clef and a double bar line. The notation includes a series of eighth notes with slurs and accents, and a final quarter note with a fermata.

96



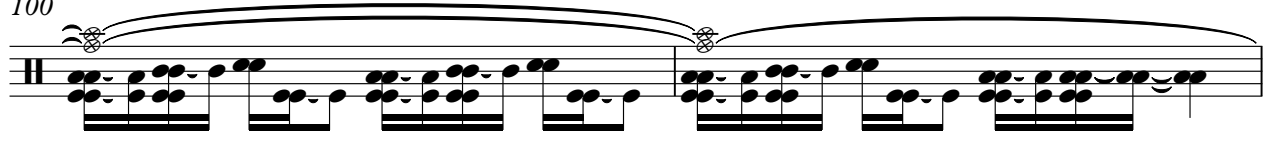
Musical notation for measure 96, featuring a guitar staff with a treble clef and a double bar line. The notation includes a series of eighth notes with slurs and accents, and a final quarter note with a fermata.

98



Musical notation for measure 98, featuring a guitar staff with a treble clef and a double bar line. The notation includes a series of eighth notes with slurs and accents, and a final quarter note with a fermata.

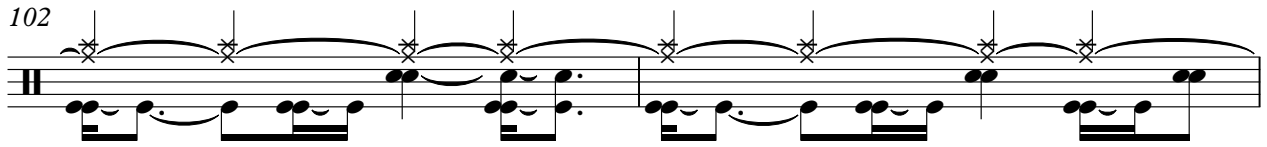
100



Musical notation for measure 100, featuring a guitar staff with a treble clef and a double bar line. The notation includes a series of eighth notes with slurs and accents, and a final quarter note with a fermata.

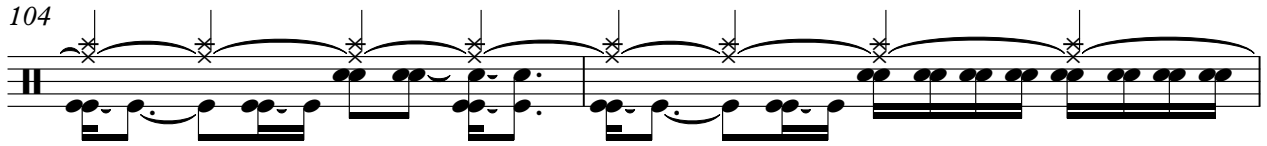
V.S.

102



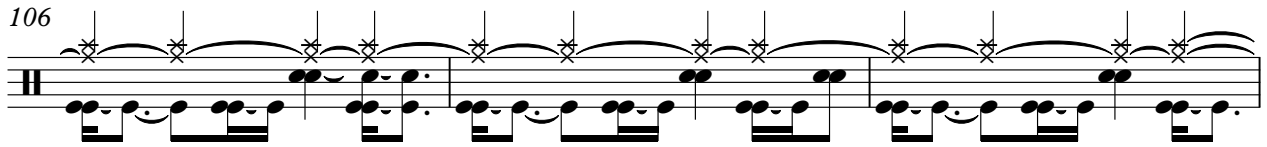
Musical notation for measure 102, featuring a guitar staff with a treble clef and a double bar line. The notation includes a series of eighth notes with beams, some marked with 'x' symbols, and a slur over the first four notes.

104



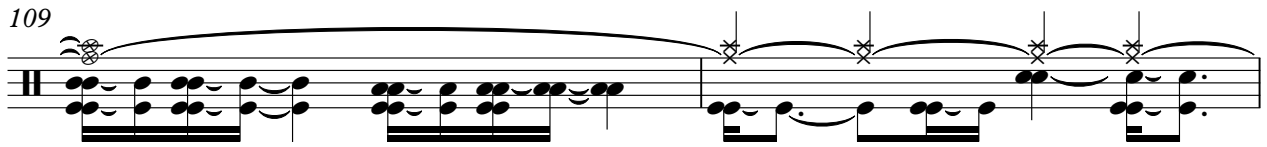
Musical notation for measure 104, featuring a guitar staff with a treble clef and a double bar line. The notation includes a series of eighth notes with beams, some marked with 'x' symbols, and a slur over the first four notes.

106



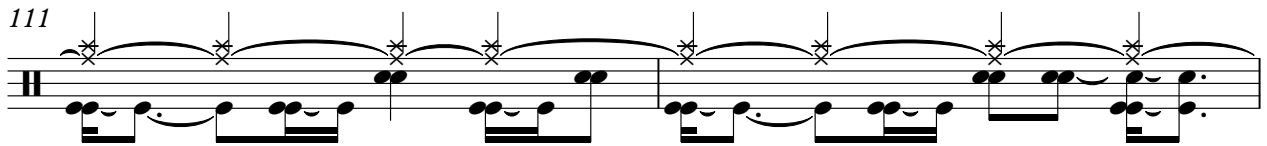
Musical notation for measure 106, featuring a guitar staff with a treble clef and a double bar line. The notation includes a series of eighth notes with beams, some marked with 'x' symbols, and a slur over the first four notes.

109



Musical notation for measure 109, featuring a guitar staff with a treble clef and a double bar line. The notation includes a series of eighth notes with beams, some marked with 'x' symbols, and a slur over the first four notes.

111



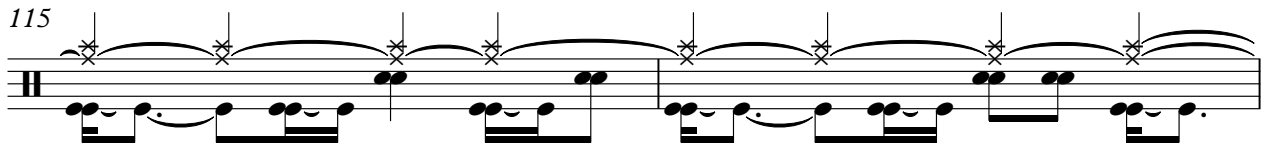
Musical notation for measure 111, featuring a guitar staff with a treble clef and a double bar line. The notation includes a series of eighth notes with beams, some marked with 'x' symbols, and a slur over the first four notes.

113



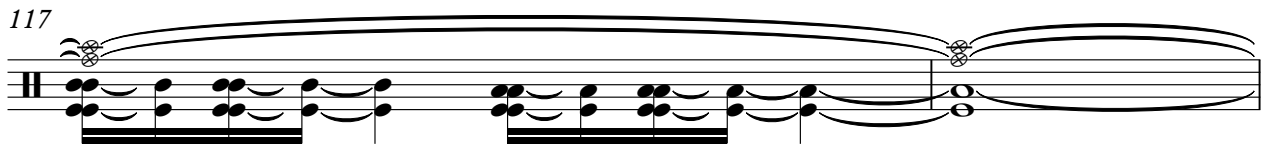
Musical notation for measure 113, featuring a guitar staff with a treble clef and a double bar line. The notation includes a series of eighth notes with beams, some marked with 'x' symbols, and a slur over the first four notes.

115



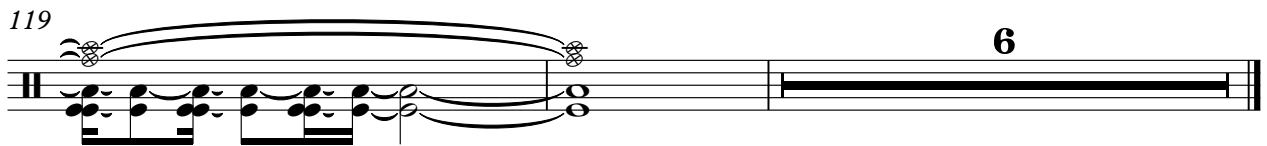
Musical notation for measure 115, featuring a guitar staff with a treble clef and a double bar line. The notation includes a series of eighth notes with beams, some marked with 'x' symbols, and a slur over the first four notes.

117



Musical notation for measure 117, featuring a guitar staff with a treble clef and a double bar line. The notation includes a series of eighth notes with beams, some marked with 'x' symbols, and a slur over the first four notes.

119



Musical notation for measure 119, featuring a guitar staff with a treble clef and a double bar line. The notation includes a series of eighth notes with beams, some marked with 'x' symbols, and a slur over the first four notes. A large number '6' is positioned to the right of the staff.

New Found Glory - My Heart Will Go On

TabIt MIDI - Track 1

♩ = 102,000053

10

15

20

25

30

35

40

46

50

V.S.

54

58

63

69

74

80

85

90

94

98

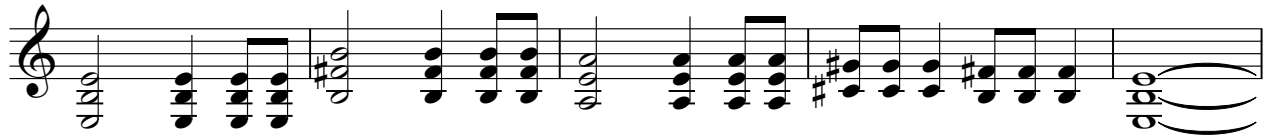
103



109



114



119



♩ = 102,000053

2

6

10

15

20

25

30

35

40

46

V.S.

50

54

58

63

69

74

80

87

93

99

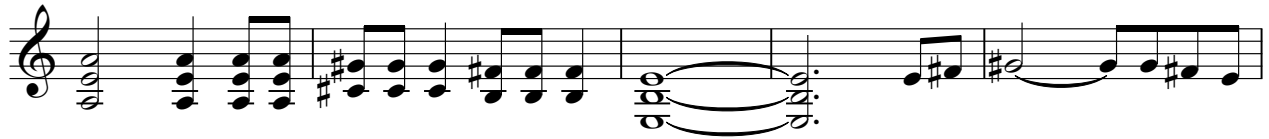
105



110



116



121



♩ = 102,000053

10

16

21

26

31

36

42

48

52

V.S.

105



110



116



121

