

♩ = 140,000137

Percussion

Flexatone

Viola

♩ = 140,000137

4

Perc.

Flex.

Vla.

7

Perc.

Flex.

Lead 1

Vla.

11

Perc. Flex. Lead 1

This system contains measures 11, 12, and 13. The Percussion staff (Perc.) features a sequence of eighth notes with 'x' marks above them, indicating muted notes. The Flexa staff (Flex.) has a rhythmic pattern of eighth notes with rests. The Lead 1 staff (Lead 1) shows a melodic line with eighth notes and rests, including some beamed eighth notes.

14

Perc. Flex. Lead 1

This system contains measures 14, 15, and 16. The Percussion staff (Perc.) continues with eighth notes and 'x' marks. The Flexa staff (Flex.) has a rhythmic pattern with eighth notes and rests. The Lead 1 staff (Lead 1) continues with a melodic line of eighth notes and rests.

17

Perc. Flex. Lead 1

This system contains measures 17, 18, and 19. The Percussion staff (Perc.) has eighth notes with 'x' marks, with a full rest in measure 18. The Flexa staff (Flex.) has a rhythmic pattern with eighth notes and rests. The Lead 1 staff (Lead 1) has a melodic line with eighth notes and rests, including a full rest in measure 18.

21

Perc. Flex. Lead 1

This system contains measures 21, 22, and 23. The Percussion part (Perc.) is in a 2/4 time signature and features a consistent rhythmic pattern of eighth notes with 'x' marks above them. The Flexa part (Flex.) is in a 3/4 time signature and consists of a sequence of eighth notes with rests. The Lead 1 part (Lead 1) is in a 3/4 time signature and features a sequence of eighth notes with rests, mirroring the Flexa part.

24

Perc. Flex. Lead 1

This system contains measures 24, 25, 26, and 27. The Percussion part (Perc.) continues with the eighth-note pattern until measure 26, where it changes to a sixteenth-note pattern with 'x' marks, and ends with a whole note in measure 27. The Flexa part (Flex.) continues with eighth notes until measure 26, where it has a whole rest, and remains silent in measure 27. The Lead 1 part (Lead 1) continues with eighth notes until measure 26, where it has a whole rest, and remains silent in measure 27. Brackets labeled '6' indicate sixteenth-note runs in both the Perc. and Flex. parts in measure 26.

28

Lead 1

This system contains measure 28. The Lead 1 part (Lead 1) is in a 3/4 time signature and features a sequence of eighth notes with rests, including a key signature change to one sharp (F#) in the second measure.

# Percussion

♩ = 140,000137

5

10

14

18

22

25

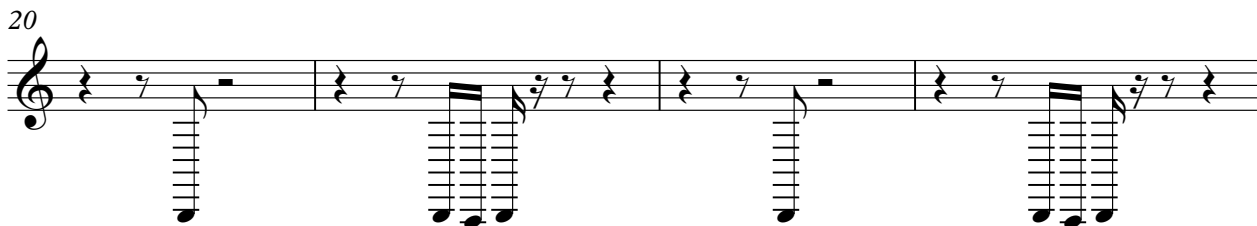
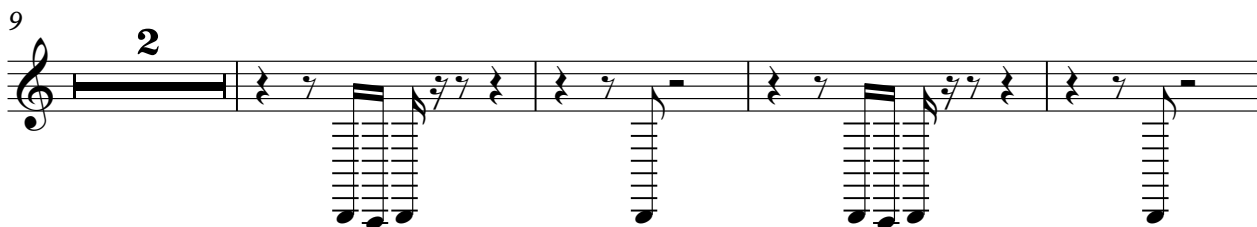
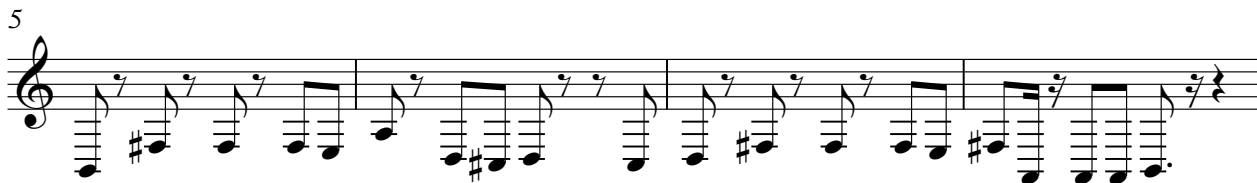
6

4

Detailed description: This image shows a musical score for a percussion instrument, likely a guitar, in 4/4 time. The score is written on a single staff with a treble clef and a key signature of one sharp (F#). The tempo is indicated as ♩ = 140,000137. The score consists of 25 measures. Measures 1-4 are marked with measure numbers 1, 5, 10, and 14. Measures 18, 22, and 25 are also marked. The notation includes various rhythmic patterns, including eighth and sixteenth notes, and rests. There are several instances of sixteenth-note runs, some of which are bracketed with the number '6'. A double bar line is present at the end of measure 25, with a '4' written below it, indicating a 4-measure rest. The score is written in a style that combines traditional musical notation with guitar-specific symbols like 'x' for mutes and asterisks for accents.

# Flexatone

♩ = 140,000137



# Lead 1 (Square)

♩ = 140,000137

9



13



17

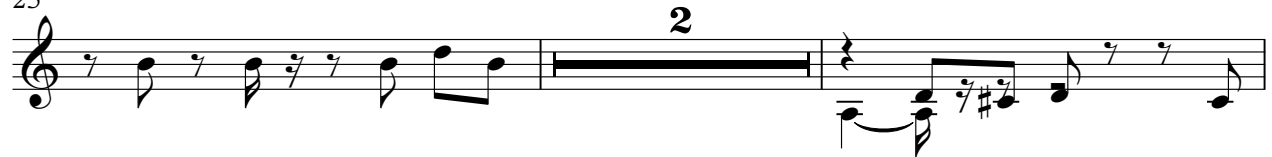


21



25

2



29



# Viola

♩ = 140,000137

