

Peggy Lee - Fever

$\text{♩} = 136,000153$

*DRUMS

$\text{♩} = 136,000153$

*9

5

*DRUMS

*9

9

*1

*DRUMS

*9

13

*1

*DRUMS

*9

16

*1

*DRUMS

*9

19

*1

*DRUMS

*9

22

*1

*DRUMS

*9

26

*1

*DRUMS

*9

30

*1

*DRUMS

*9

33

*1

*DRUMS

*9

36

*1

*DRUMS

*9

40

*1

*DRUMS

*9

44

*1

*DRUMS

*9

47

*1

*DRUMS

*9

51

*DRUMS

*9

54

*1

*DRUMS

*9

57

*1

*DRUMS

*9

60

*1

*DRUMS

*9

63

*1

*DRUMS

*9

66

*1

*DRUMS

*9

69

*1

*DRUMS

*9

73

*1

*DRUMS

*9

76

*1

*DRUMS

*9

79

*1

*DRUMS

*9

82

*1

*DRUMS

*9

86

*1

*DRUMS

*9

89

*1

*DRUMS

*9

93

*1

*DRUMS

*9

96

*1

*DRUMS

*9

99

*1

*DRUMS

*9

102

*1

*DRUMS

*9

105

*1

*DRUMS

*9

109

*1

*DRUMS

*9

111

*1

*DRUMS

*9

Peggy Lee - Fever

*1

♩ = 136,000153

9

14

17

21

26

31

35

39

44

47

5

The image displays a musical score for guitar, consisting of ten staves of notation. The score begins at measure 54 and ends at measure 94. The notation includes various rhythmic values such as eighth and sixteenth notes, often beamed together. There are several instances of triplets, indicated by a '3' over a group of notes. The key signature is one flat (B-flat), and the time signature is 8/8. The score includes various accidentals (sharps and flats) and articulation marks (accents and slurs). A measure rest of 4 measures is shown at measure 70. The notation is written on a single-line staff with a treble clef and a common time signature.

97



102



106



110



*DRUMS

Peggy Lee - Fever

♩ = 136,000153

6

12

18

24

30

36

42

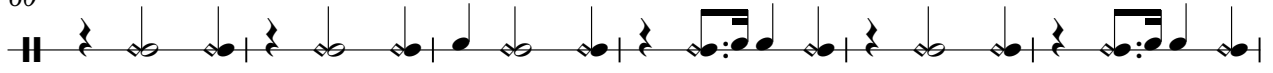
48

54

V.S.

*DRUMS

60



66



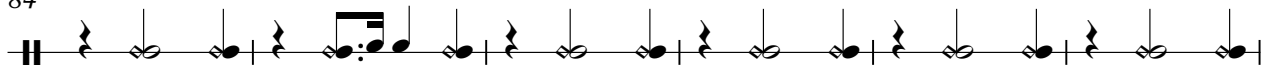
72



78



84



90



96



102



108

