

Offspring - Cool To Hate

♩ = 170,000092

gerth@usa.net

gerth@usa.net

Voc2B

Guit1

Guit2

MIDI by:

Voc2

Voc1

♩ = 170,000092

Detailed description: This block contains the first five measures of the musical score. It features two guitar staves (Guit1 and Guit2), a MIDI bass line, and two vocal staves (Voc1 and Voc2). The tempo is marked as 170,000092. The key signature has one flat (B-flat). The time signature is 4/4. The guitar parts consist of chords and single notes. The MIDI part provides a bass line. The vocal parts are currently silent.



6

gerth@usa.net

gerth@usa.net

Guit1

MIDI by:

Voc1

Detailed description: This block contains measures 6 through 9 of the musical score. It continues the instrumental and MIDI parts from the previous block. The guitar parts (Guit1 and Guit2) and the MIDI bass line are present. The vocal part (Voc1) begins in measure 6 with a melodic line. The tempo remains 170,000092.

10

gerth@usa.net

gerth@usa.net

Guit1

Guit2

MIDI by:

Voc1



14

gerth@usa.net

gerth@usa.net

Guit1

Guit2

MIDI by:

Voc1

18

gerth@usa.net

gerth@usa.net

Voc2B

Guit1

Guit2

MIDI by:

Voc2

Voc1



22

gerth@usa.net

gerth@usa.net

Voc2B

Guit1

Guit2

MIDI by:

Voc2

Voc1

26

gerth@usa.net

gerth@usa.net

Guit1

Guit2

MIDI by:

Voc1



30

gerth@usa.net

gerth@usa.net

Guit1

Guit2

MIDI by:

Voc1

34

gerth@usa.net

gerth@usa.net

Guit1

Guit2

MIDI by:

Voc1



38

gerth@usa.net

gerth@usa.net

Guit1

Guit2

MIDI by:

Voc1

42

gerth@usa.net

gerth@usa.net

Guit1

Guit2

MIDI by:

Voc1



46

gerth@usa.net

gerth@usa.net

Guit1

Guit2

MIDI by:

Voc1

50

gerth@usa.net

gerth@usa.net

Voc2B

Guit1

Guit2

MIDI by:

Voc2

Voc1



54

gerth@usa.net

gerth@usa.net

Voc2B

Guit1

Guit2

MIDI by:

Voc2

Voc1

58

gerth@usa.net

gerth@usa.net

Guit1

Guit2

MIDI by:

Voc1



62 ♩ = 143,000137

gerth@usa.net

gerth@usa.net

Guit1

Guit2

MIDI by:

♩ = 143,000137

Voc1

66

gerth@usa.net

gerth@usa.net

Guit1

Guit2

MIDI by:

Voc1



70

gerth@usa.net

gerth@usa.net

Guit1

Guit2

MIDI by:

Voc1

74

gerth@usa.net

gerth@usa.net

Guit1

Guit2

MIDI by:

Voc1



78

gerth@usa.net

gerth@usa.net

Guit1

Guit2

MIDI by:

Voc1

82 $\text{♩} = 150,000000$

gerth@usa.net

gerth@usa.net

Guit1

Guit2

MIDI by:

Voc1 $\text{♩} = 150,000000$



86 $\text{♩} = 158,000351$ $\text{♩} = 165,000168$

gerth@usa.net

gerth@usa.net

Guit1

Guit2

MIDI by:

Voc1 $\text{♩} = 158,000351$ $\text{♩} = 165,000168$

12

♩ = 173,000397

gerth@usa.net

gerth@usa.net

Guit1

Guit2

MIDI by:

Voc1

♩ = 173,000397



93

gerth@usa.net

gerth@usa.net

Guit1

Guit2

MIDI by:

Voc1

97

gerth@usa.net

gerth@usa.net

Guit1

Guit2

MIDI by:

Voc1



101

gerth@usa.net

gerth@usa.net

Voc2B

Guit1

Guit2

MIDI by:

Voc2

Voc1

105

gerth@usa.net

gerth@usa.net

Voc2B

Guit1

Guit2

MIDI by:

Voc2

Voc1



109

gerth@usa.net

gerth@usa.net

Guit1

Guit2

MIDI by:

Voc1

112

gerth@usa.net

gerth@usa.net

Guit1

Guit2

MIDI by:

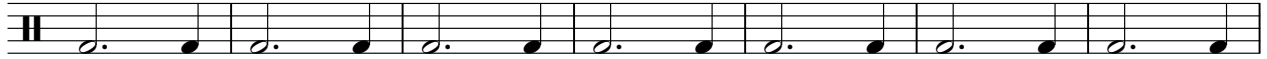
Voc1

Offspring - Cool To Hate

♩ = 170,000092



9



16



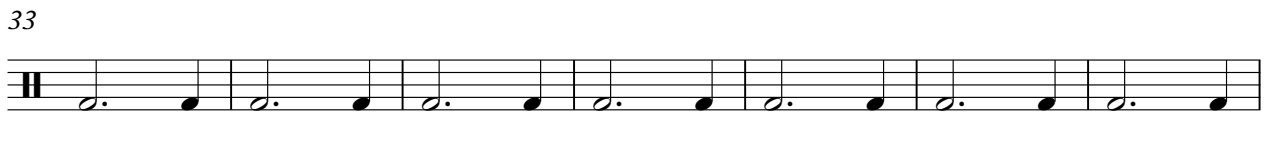
22



27



33



40



45



50

55

60

♩ = 143,000137

65

2

71

76

81

♩ = 150,000000

86

♩ = 158,000351 ♩ = 165,000168 ♩ = 173,000397

92

100

2

106

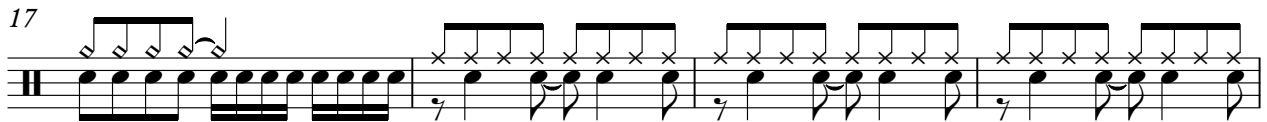
Musical notation for measure 106, featuring a treble clef, a key signature of one sharp (F#), and a 3/4 time signature. The notation includes a series of eighth notes and quarter notes, with a final measure containing a quarter rest and a fermata.

111

Musical notation for measure 111, featuring a treble clef, a key signature of one sharp (F#), and a 3/4 time signature. The notation includes a series of eighth notes and quarter notes, with a final measure containing a quarter rest and a fermata.

Offspring - Cool To Hate

♩ = 170,000092



V.S.

41



45



49



53



57



61

♩ = 143,000137



66



71



77



83

♩ = 150,000000

♩ = 158,000351

♩ = 165,000168



89 $\text{♩} = 173,000397$

93

97

101

105

109

112

♩ = 170,000092

17 2

23

26 2

54

♩ = 143,000137 ♩ = 150,000000

6 22 2

86

♩ = 158,000351 ♩ = 165,000168 ♩ = 173,000397

2 2 12

104

2 8

Offspring - Cool To Hate

Guit1

♩ = 170,000092

6

10

15

19

22

25

28

32

36

V.S.

40

44

48

52

55

58

61

♩ = 143,000137

65

69

73

77



81

♩ = 150,000000



85

♩ = 158,000351

♩ = 165,000168



89

♩ = 173,000397



95



100



104



107



110



112



Offspring - Cool To Hate

Guit2

♩ = 170,000092

9

13

17

20

23

26

29

33

37

41

V.S.

45

49

52

55

58

61

♩ = 143,000137

65

69

73

77

81 $\text{♩} = 150,000000$

85 $\text{♩} = 158,000351$ $\text{♩} = 165,000168$

89 $\text{♩} = 173,000397$

95

100

104

107

110

112

Offspring - Cool To Hate

MIDI by:

♩ = 170,000092



6



10



15



19



23



27



31



35



39



V.S.

43



48



52



56



60

♩ = 143,000137



64



68



72



76



80



84 ♩ = 150,000000

♩ = 158,000351



88 ♩ = 165,000168

♩ = 173,000397



94



99



103



107



111



♩ = 170,000092

17 2

23

26 2

54

♩ = 143,000137 ♩ = 150,000000

6 22 2

86

♩ = 158,000351 ♩ = 165,000168 ♩ = 173,000397

2 2 12

104

2 8

Offspring - Cool To Hate

Voc1

♩ = 170,000092

6

11

16

20

25

30

37

