

# Bob Dylan - Man In The Long Black Coat

♩ = 75,999969

This system contains four staves: Guitar, Melody, Bass, and Synth. The time signature is 6/8. The tempo is marked as ♩ = 75,999969. The Guitar staff shows a sequence of chords and some melodic movement. The Melody staff is mostly silent with a few notes at the end. The Bass staff has a steady eighth-note pattern. The Synth staff provides harmonic support with chords.

6

This system continues the music with four staves: Guitar, Melody, Bass, and Synth. The time signature is 6/8. The tempo is marked as ♩ = 75,999969. The Guitar staff continues with chords. The Melody staff has more active lines. The Bass staff continues with its eighth-note pattern. The Synth staff continues with chords.

10

Guitar

Melody

Bass

Synth

14

Guitar

Melody

Bass

Synth

18

Guitar

Melody

Bass

Synth

22

Guitar

Melody

Bass

Synth

26

Guitar

Melody

Bass

Synth

30

Guitar

Melody

Bass

Synth

34

Guitar

Melody

Bass

Synth

38

Guitar

Melody

Bass

Synth

42

Guitar

Melody

Bass

Synth

46

Guitar

Melody

Bass

Synth

50

Guitar

Melody

Bass

Synth

54

Guitar

Melody

Bass

Synth

58

Guitar

Melody

Bass

Synth

62

Guitar

Melody

Bass

Synth

66

Guitar

Melody

Bass

Synth

70

This musical score block covers measures 70 and 71. It features four staves: Guitar, Melody, Bass, and Synth. The Guitar staff uses a treble clef and contains block chords. The Melody staff uses a treble clef and features a rhythmic pattern of eighth notes with grace notes. The Bass staff uses a bass clef and contains a steady eighth-note bass line. The Synth staff uses a treble clef and features a sustained chord with a long note value.

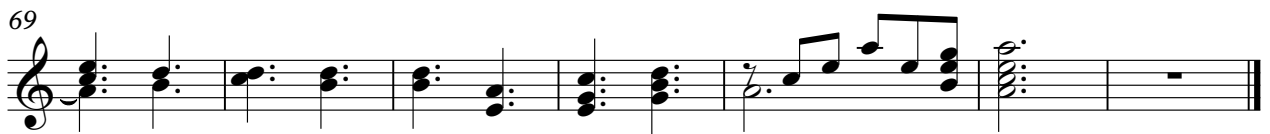
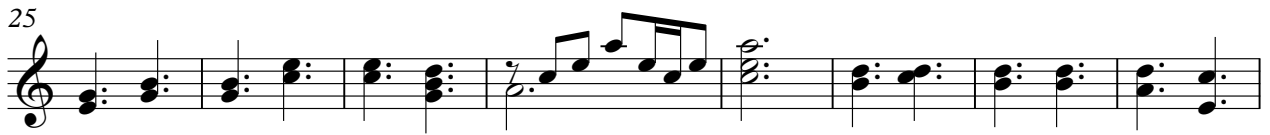
72

This musical score block covers measures 72 through 75. It features four staves: Guitar, Melody, Bass, and Synth. The Guitar staff uses a treble clef and contains block chords and a melodic line. The Melody staff uses a treble clef and features a rhythmic pattern of eighth notes with grace notes. The Bass staff uses a bass clef and contains a steady eighth-note bass line. The Synth staff uses a treble clef and features a sustained chord with a long note value.

# Bob Dylan - Man In The Long Black Coat

Guitar

♩ = 75,999969





Bob Dylan - Man In The Long Black Coat

Melody

♩ = 75,999969

4

8

13

18

24

29

35

39

43

46

3

2

Melody

50

54

59

64

69

72

Bob Dylan - Man In The Long Black Coat

Bass

♩ = 75,999969



7



12



17



22



27



32



37



42



48



V.S.

2

Bass

53



58



63



69



72



Synth

Bob Dylan - Man In The Long Black Coat

♩ = 75,999969

10

19

28

37

46

55

64

70