

Offspring - Way Down The Line

gerth@usa.net

♩ = 132,000137

Guit1

Guit2

Scrape

Reg1

Reg2

MIDI by:

Voc2

Voc1

♩ = 132,000137

gerth@usa.net

6

♩ = 75,000000 ♪ = 23,000166 ♪ = 173,000397

Guit1

Guit2

Scrape

Voc2

Voc1

♩ = 75,000000 ♪ = 23,000166 ♪ = 173,000397



gerth@usa.net

11

Guit1

Guit2

MIDI by:



gerth@usa.net

15

Guit1

Guit2

MIDI by:

Voc1

gerth@usa.net

19 3

Guit1

Guit2

MIDI by:

Voc1



gerth@usa.net

23

Guit1

Guit2

MIDI by:

Voc1

26

gerth@usa.net

gerth@usa.net

Guit1

Guit2

MIDI by:

Voc1



29

gerth@usa.net

gerth@usa.net

Guit1

Guit2

MIDI by:

Voc2

Voc1

32

gerth@usa.net

gerth@usa.net

Guit1

Guit2

MIDI by:

Voc2

Voc1



35

gerth@usa.net

gerth@usa.net

Guit1

Guit2

MIDI by:

Voc2

Voc1

38

gerth@usa.net

Guit1

Guit2

MIDI by:

Voc2

Voc1



42

gerth@usa.net

Guit1

Guit2

MIDI by:

Voc1

46

gerth@usa.net

Guit1

Guit2

MIDI by:

Voc1



50

gerth@usa.net

gerth@usa.net

Guit1

Guit2

MIDI by:

Voc1

53

gerth@usa.net

gerth@usa.net

Guit1

Guit2

MIDI by:

Voc2

Voc1



56

gerth@usa.net

gerth@usa.net

Guit1

Guit2

MIDI by:

Voc2

Voc1

59

gerth@usa.net

gerth@usa.net

Guit1

Guit2

MIDI by:

Voc2

Voc1



62

gerth@usa.net

gerth@usa.net

Guit1

Guit2

MIDI by:

Voc2

Voc1

65

gerth@usa.net

gerth@usa.net

Guit1

Guit2

MIDI by:

Voc2

Voc1



68

gerth@usa.net

gerth@usa.net

Guit1

Guit2

MIDI by:

Voc2

Voc1

71

gerth@usa.net

gerth@usa.net

Guit1

Guit2

MIDI by:

Voc1



75

gerth@usa.net

Guit1

Guit2

MIDI by:

Voc1

79

gerth@usa.net

gerth@usa.net

Guit1

Guit2

MIDI by:

Voc1



83

gerth@usa.net

gerth@usa.net

Guit1

Guit2

MIDI by:

Voc2

Voc1

86

gerth@usa.net

gerth@usa.net

Guit1

Guit2

MIDI by:

Voc2

Voc1



89

gerth@usa.net

gerth@usa.net

Guit1

Guit2

MIDI by:

Voc2

Voc1

92

gerth@usa.net

gerth@usa.net

Guit1

Guit2

MIDI by:

Voc2

Voc1



95

gerth@usa.net

gerth@usa.net

Guit1

Guit2

MIDI by:

Voc2

Voc1

98

gerth@usa.net

Guit1

Guit2

Reg1

Reg2

MIDI by:

Voc2

Voc1



102

gerth@usa.net

Reg1

Reg2



106

gerth@usa.net

Reg1

Reg2

Offspring - Way Down The Line

$\text{♩} = 132,000137$

6 $\text{♩} = 75,00000000,000397$

15

19

23

27

30

32

34

37

V.S.

41

45

49

53

56

59

62

65

68

71

75

79

83

86

89

92

95

98

102

106

Offspring - Way Down The Line

♩ = 132,000137 ♩ = 75,000137,000137,000137,000397

7 **16**

27

31

34

38 **12**

53

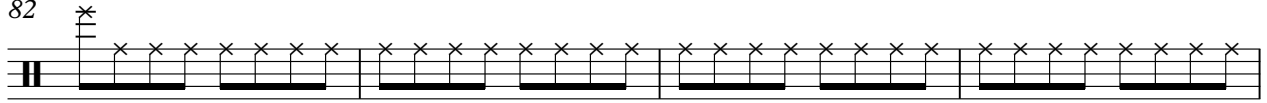
57

61

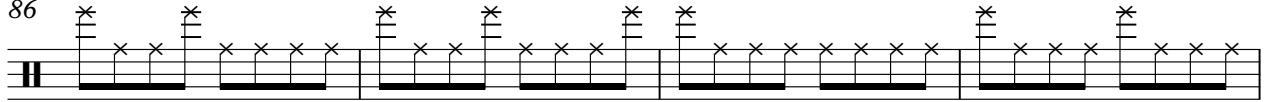
65

69 **10**

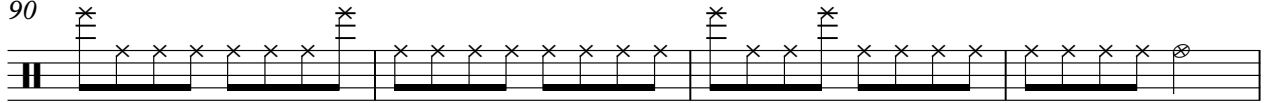
82



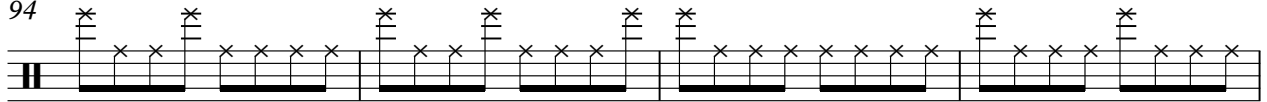
86



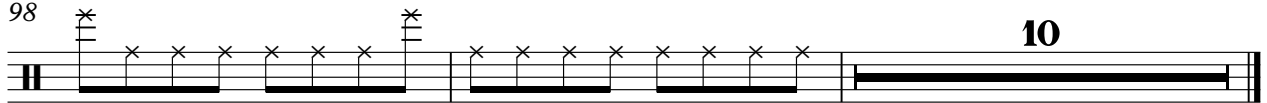
90



94



98



10

Offspring - Way Down The Line

Guit1

♩ = 132,000137 ♩ = 75,00000000000001

10

15

20

25

28

31

34

39

44

V.S.

49

52

55

59

64

68

72

77

82

86

90

Musical notation for guitar part 1, measures 90-93. The key signature is one sharp (F#) and the time signature is 3/4. The notation consists of a single staff with a treble clef. Measures 90-91 feature a sequence of eighth notes and chords. Measure 92 contains a series of chords. Measure 93 features a series of chords with a fermata over the final chord.

94

Musical notation for guitar part 1, measures 94-96. The key signature is one sharp (F#) and the time signature is 3/4. The notation consists of a single staff with a treble clef. Measure 94 features a sequence of eighth notes and chords. Measure 95 contains a series of chords. Measure 96 features a series of chords with a fermata over the final chord.

97

Musical notation for guitar part 1, measures 97-99. The key signature is one sharp (F#) and the time signature is 3/4. The notation consists of a single staff with a treble clef. Measure 97 features a sequence of eighth notes and chords. Measure 98 contains a series of chords. Measure 99 features a series of chords with a fermata over the final chord. A large number '10' is positioned above the staff in measure 99.

Offspring - Way Down The Line

Guit2

♩ = 132,000137

♩ = 75,000000139,000000167

10 ♩ = 173,000397

3

17

22

26

29

32

34

39

44

V.S.

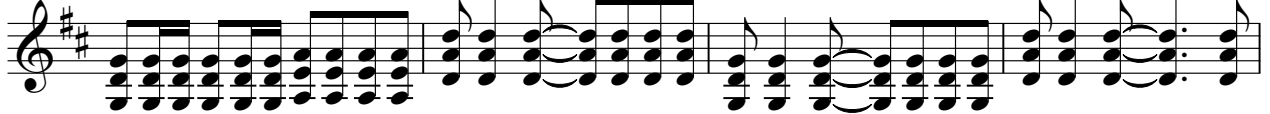
49



52



55



59



64



68



72



77



82



86



90



94



98



Scrape

Offspring - Way Down The Line

♪ = 132,000137 ♪ = 75,000000 = ♪ = 98,000000 = ♪ = 173,000397

7 **22**

32

2 **76**

Offspring - Way Down The Line

Reg1

♩ = 132,000137 ♩ = 75,0000009 = 2,30,05,556 ♩ = 173,000397

7 22

32

2 66

102

102

106

106

Offspring - Way Down The Line

Reg2

♩ = 132,000137 ♩ = 75,0000009 = 2,30,05,556 ♩ = 173,000397

7 22

32

2 66

102

106

56



60



64



68



72



77



82



86



90



94



98

10



Offspring - Way Down The Line

Voc2

♩ = 132,000137

6 $\frac{♩}{♩} = 75,000000$ $\frac{♩}{♩} = 98,000000$ $\frac{♩}{♩} = 107$

10 $\frac{♩}{♩} = 173,000397$ **21**

34

39 **16**

58

63

68 **14**

86

90

2

Voc2

94



98



Offspring - Way Down The Line

Voc1

♩ = 132,000137

6

♩ = 75,000000

8

18

23

28

32

36

3

42



95



98

