

# pimp code - r u ready

♩ = 143,000137

Drums

Melody

Bassline

♩ = 143,000137

This system contains measures 1 through 3. The drums part features a consistent pattern of quarter notes on the snare and bass lines. The melody is written in treble clef with a key signature of one flat (Bb) and a 4/4 time signature. The bassline is written in treble clef with a key signature of one sharp (F#) and a 4/4 time signature, featuring a steady eighth-note pattern.

4

Drums

Melody

Bassline

This system contains measures 4 through 6. The drums part continues with the same pattern as the first system. The melody and bassline parts continue their respective patterns, with the bassline maintaining its eighth-note sequence.

7

Drums

Melody

Bassline

This system contains measures 7 through 9. The drums part continues with the same pattern. The melody and bassline parts continue their respective patterns, with the bassline maintaining its eighth-note sequence.

2

10

Drums

Melody

Bassline

13

Drums

Melody

Bassline

16

Drums

Melody

Bassline

19

Drums

Melody

Bassline

22

Drums

Melody

Bassline

24

Drums

Melody

Bassline

Drums

pimp code - r u ready

♩ = 143,000137



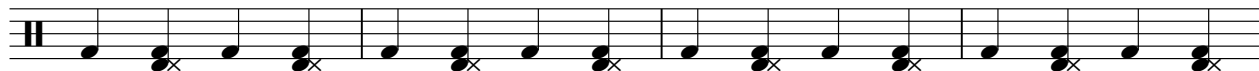
7



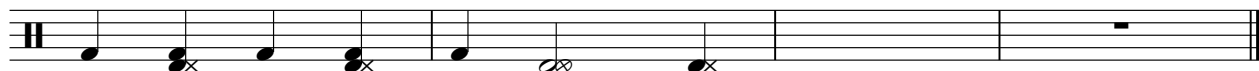
13



19



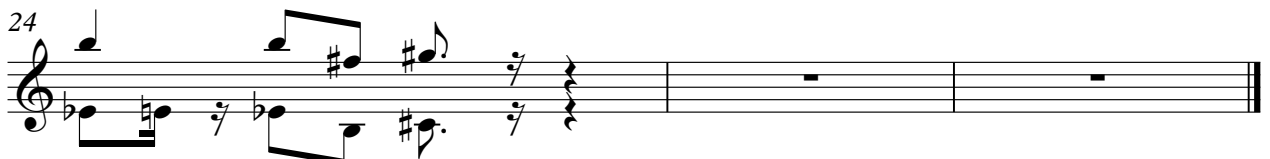
23



Melody

pimp code - r u ready

♩ = 143,000137



Bassline


pimp code - r u ready

♩ = 143,000137



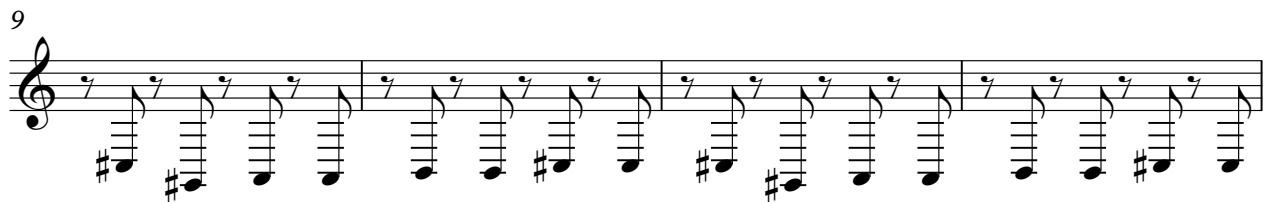
Musical staff 1, measures 1-4. The staff contains a series of eighth notes with stems pointing down, forming a rhythmic pattern. The notes are: G#4, A4, B4, C5, G#4, A4, B4, C5, G#4, A4, B4, C5, G#4, A4, B4, C5.

5



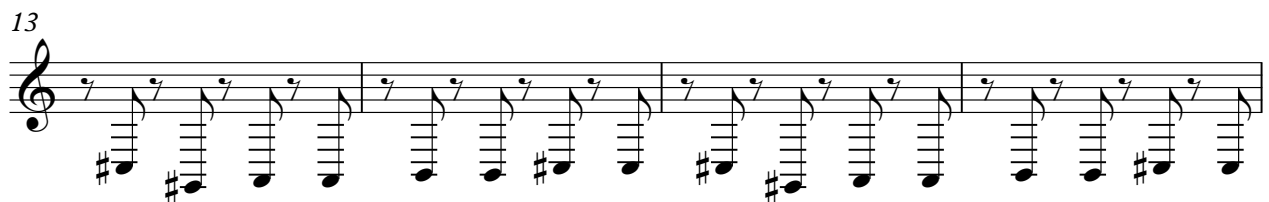
Musical staff 2, measures 5-8. The staff contains a series of eighth notes with stems pointing down, continuing the rhythmic pattern from the previous staff.

9



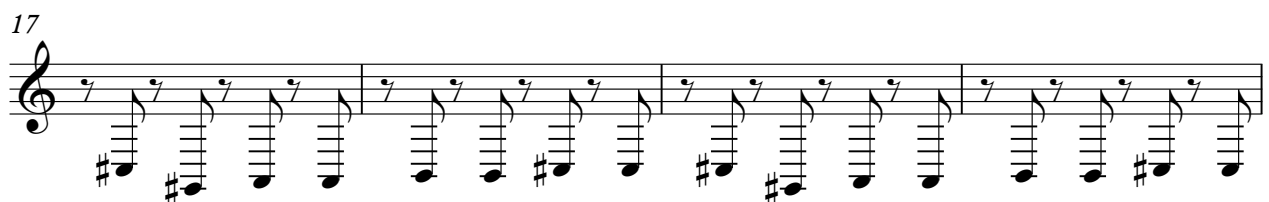
Musical staff 3, measures 9-12. The staff contains a series of eighth notes with stems pointing down, continuing the rhythmic pattern.

13



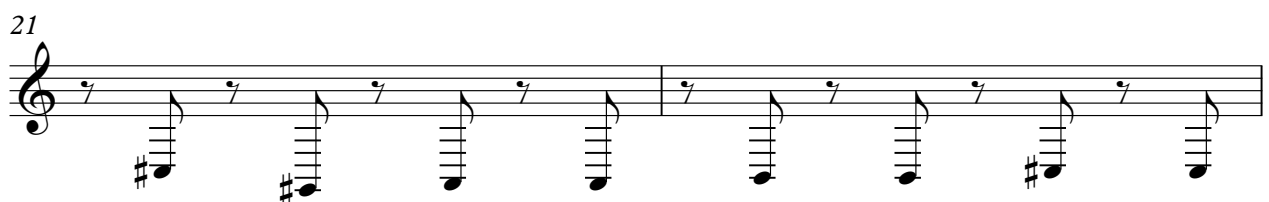
Musical staff 4, measures 13-16. The staff contains a series of eighth notes with stems pointing down, continuing the rhythmic pattern.

17



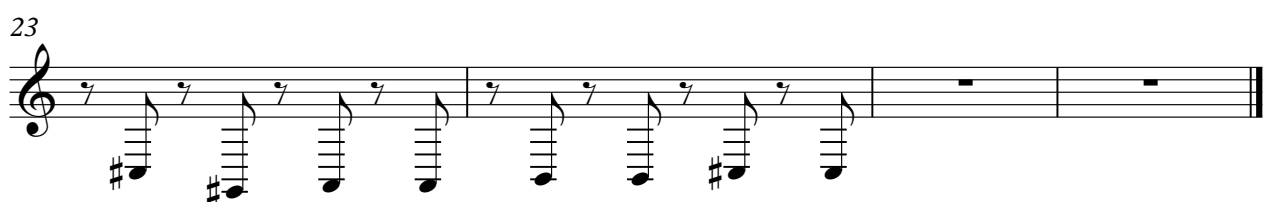
Musical staff 5, measures 17-20. The staff contains a series of eighth notes with stems pointing down, continuing the rhythmic pattern.

21



Musical staff 6, measures 21-22. The staff contains a series of eighth notes with stems pointing down, continuing the rhythmic pattern.

23



Musical staff 7, measures 23-24. The staff contains a series of eighth notes with stems pointing down, continuing the rhythmic pattern.