

Pink - Brain Damage

♩ = 236,000000

Jazz Guitar

Electric Bass

♩ = 236,000000

Tape Sampler Keyboard [Strings]

4

J. Gtr.

E. Bass

Tape Smp. Str

8

J. Gtr.

J. Gtr.

E. Bass

Tape Smp. Str

12

J. Gtr.

J. Gtr.

E. Bass

Tape Smp. Str

This musical score covers measures 12 through 15. It features four staves: two for J. Gtr. (Jazz Guitar), one for E. Bass (Electric Bass), and one for Tape Smp. Str (Tape Sample String). The key signature is two sharps (F# and C#). The first J. Gtr. staff has a melodic line with eighth and quarter notes. The second J. Gtr. staff has a simple harmonic accompaniment. The E. Bass staff has a bass line with quarter and eighth notes. The Tape Smp. Str staff has a rhythmic pattern of eighth notes.

16

J. Gtr.

J. Gtr.

E. Bass

Syn. Br.

Tape Smp. Str

This musical score covers measures 16 through 19. It features five staves: two for J. Gtr., one for E. Bass, one for Syn. Br. (Synthesizer Brass), and one for Tape Smp. Str. The key signature remains two sharps. The first J. Gtr. staff continues the melodic line. The second J. Gtr. staff continues the harmonic accompaniment. The E. Bass staff continues the bass line. The Syn. Br. staff has a rhythmic pattern of eighth notes. The Tape Smp. Str staff has a rhythmic pattern of eighth notes.

20

J. Gtr.

J. Gtr.

E. Bass

Syn. Br.

Tape Smp. Str

24

J. Gtr.

J. Gtr.

E. Bass

Tape Smp. Str

28

J. Gtr.

J. Gtr.

E. Bass

Tape Smp. Str.

32

J. Gtr.

J. Gtr.

E. Bass

Syn. Br.

Tape Smp. Str.

36

J. Gtr.

J. Gtr.

E. Bass

Syn. Br.

Tape Smp. Str.

40

J. Gtr.

J. Gtr.

E. Bass

Syn. Br.

Tape Smp. Str.

44

J. Gtr.

J. Gtr.

E. Bass

Syn. Br.

Tape Smp. Str.

48

J. Gtr.

J. Gtr.

E. Bass

Syn. Br.

Tape Smp. Str.

52

J. Gtr.

J. Gtr.

E. Bass

Syn. Br.

Tape Smp. Str.

56

J. Gtr.

J. Gtr.

E. Bass

Syn. Br.

Tape Smp. Str.

60

J. Gtr.

J. Gtr.

E. Bass

Syn. Br.

Tape Smp. Str

Detailed description: This block contains the musical notation for measures 60 through 63. It features five staves. The top two staves are for the 'J. Gtr.' (Jazz Guitar), the middle for 'E. Bass' (Electric Bass), the fourth for 'Syn. Br.' (Synthesizer), and the bottom for 'Tape Smp. Str' (Tape Sample). The key signature has two sharps (F# and C#). The 'Tape Smp. Str' staff has a consistent rhythmic pattern of eighth notes. The 'Syn. Br.' staff has rests in measures 61, 62, and 63. The 'J. Gtr.' and 'E. Bass' staves have various note values and rests.

64

J. Gtr.

J. Gtr.

E. Bass

Tape Smp. Str

Detailed description: This block contains the musical notation for measures 64 through 67. It features four staves. The top two staves are for the 'J. Gtr.' (Jazz Guitar), the middle for 'E. Bass' (Electric Bass), and the bottom for 'Tape Smp. Str' (Tape Sample). The key signature has two sharps (F# and C#). The 'Tape Smp. Str' staff has a consistent rhythmic pattern of eighth notes. The 'E. Bass' staff has various note values and rests. The 'J. Gtr.' staves have various note values and rests.

68

J. Gtr.

J. Gtr.

E. Bass

Syn. Br.

Tape Smp. Str

72

J. Gtr.

J. Gtr.

E. Bass

Syn. Br.

Tape Smp. Str

76

J. Gtr.

J. Gtr.

E. Bass

Syn. Br.

Tape Smp. Str

80

J. Gtr.

J. Gtr.

E. Bass

Syn. Br.

Tape Smp. Str

84

J. Gtr.
J. Gtr.
E. Bass
Syn. Br.
Tape Smp. Str

Detailed description: This block contains the musical notation for measures 84 through 87. It features five staves: two for J. Gtr. (Jazz Guitar), one for E. Bass (Electric Bass), one for Syn. Br. (Synthesizer), and one for Tape Smp. Str (Tape Sample). The key signature is two sharps (F# and C#). The notation includes various rhythmic patterns, including eighth and sixteenth notes, and rests. The J. Gtr. parts are more active, while the E. Bass and Tape Smp. Str provide a steady accompaniment. The Syn. Br. has a few notes in the final measure.

88

J. Gtr.
J. Gtr.
E. Bass
Syn. Br.
Tape Smp. Str

Detailed description: This block contains the musical notation for measures 88 through 91. It features the same five staves as the previous block. The key signature remains two sharps. The notation continues with similar rhythmic patterns. The J. Gtr. parts show some melodic development. The E. Bass and Tape Smp. Str continue their accompaniment. The Syn. Br. has a few notes in the final measure.

92

J. Gtr.

J. Gtr.

E. Bass

Syn. Br.

Tape Smp. Str

96

J. Gtr.

J. Gtr.

E. Bass

Syn. Br.

Tape Smp. Str

100

J. Gtr.

J. Gtr.

E. Bass

Syn. Br.

Tape Smp. Str.

103

J. Gtr.

J. Gtr.

E. Bass

Syn. Br.

Tape Smp. Str.

♩ = 256,000000
8

13

18

23

28

33

38

43

49

55



♩ = 256,000000



10



19



28



37



44



50



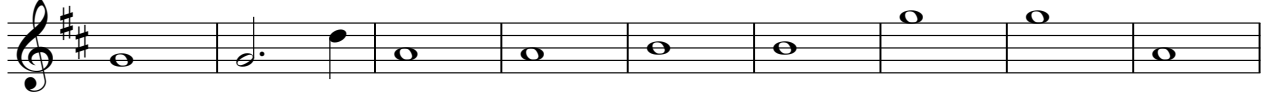
56



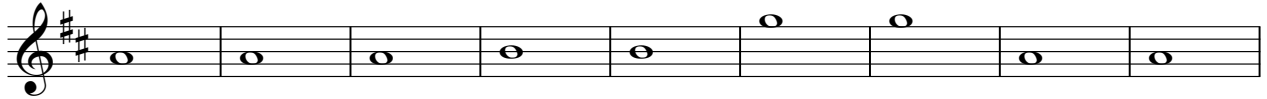
61



67



76



85



91



97



102



Pink - Brain Damage

Synth Brass

♩ = 256,000000

16

20

33

38

46

52

57

70

75

80

2

Synth Brass

87



92



98

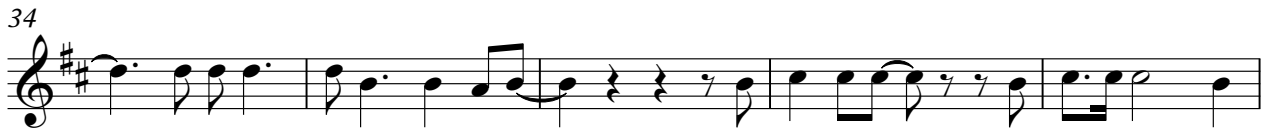


102



Tape Sampler Keyboard [Strings] Pink - Brain Damage

♩ = 256,000000



51



56



62



67



73



78



83



89



95



100

