

Pink - Wish You Were Here 2

♩ = 125,000000

Musical score for the first system of 'Wish You Were Here 2'. The score is in 4/4 time and consists of six staves: Percussion, Steel-stGt, Overdrive, FingeredBs, Strings, and Sweep Pad. The tempo is marked as ♩ = 125,000000. The Percussion, Overdrive, FingeredBs, and Strings staves are currently empty. The Steel-stGt staff contains a sequence of chords: a whole rest, followed by a series of chords in the first five measures. The Sweep Pad staff is also empty.

♩ = 125,000000

Musical score for the second system of 'Wish You Were Here 2', starting at measure 6. The Steel-stGt staff contains a sequence of chords: a whole rest, followed by a series of chords in the first five measures. The Overdrive staff is empty.

Musical score for the third system of 'Wish You Were Here 2', starting at measure 11. The Steel-stGt staff contains a sequence of chords: a whole rest, followed by a series of chords in the first five measures. The Overdrive staff is empty.

16

Percussion

Steel-stGt

Overdrive

FingeredBs

Strings

Sweep Pad

20

Percussion

Steel-stGt

FingeredBs

Strings

Sweep Pad

24

Percussion

Steel-stGt

FingeredBs

Strings

Sweep Pad

28

Percussion

Steel-stGt

FingeredBs

Strings

Sweep Pad

31

Percussion

Steel-stGt

FingeredBs

Strings

Sweep Pad

35

Percussion

Steel-stGt

Overdrive

FingeredBs

Strings

Sweep Pad

38

Percussion

Steel-stGt

Overdrive

FingeredBs

Strings

Sweep Pad

42

Percussion

Steel-stGt

Overdrive

FingeredBs

Strings

Sweep Pad

45

Percussion

Steel-stGt

Overdrive

FingeredBs

Strings

Sweep Pad

48

Percussion

Steel-stGt

Overdrive

FingeredBs

Strings

Sweep Pad

52

Percussion

Steel-stGt

Overdrive

FingeredBs

Sweep Pad

56

Percussion

Steel-stGt

Overdrive

FingeredBs

Sweep Pad

60

Percussion

Steel-stGt

Overdrive

FingeredBs

Sweep Pad

64

Percussion

Steel-stGt

Overdrive

FingeredBs

Sweep Pad

68

Percussion

Steel-stGt

Overdrive

FingeredBs

Strings

Sweep Pad

Detailed description: This system of musical notation covers measures 68 to 71. The Percussion part features a steady eighth-note pattern. The Steel-string guitar part consists of complex chordal textures with various accidentals. The Overdrive part has a melodic line with a long slur. The Fingered Bass part plays a simple eighth-note bass line. The Strings part has a melodic line with some rests. The Sweep Pad part features sustained, overlapping chordal textures.

72

Percussion

Steel-stGt

Overdrive

FingeredBs

Strings

Sweep Pad

Detailed description: This system of musical notation covers measures 72 to 75. The Percussion part continues with its eighth-note pattern. The Steel-string guitar part has similar chordal textures. The Overdrive part has a melodic line with a long slur. The Fingered Bass part plays a simple eighth-note bass line. The Strings part has a melodic line with some rests. The Sweep Pad part features sustained, overlapping chordal textures.

76

Percussion

Steel-stGt

Overdrive

FingeredBs

Strings

Sweep Pad

Detailed description: This system of music covers measures 76, 77, and 78. The Percussion part features a steady eighth-note pattern. The Steel-string guitar part consists of chords and arpeggios. The Overdrive part has sustained notes with long horizontal lines above them. The Fingered Bass part has a simple bass line. The Strings part has a melodic line with some rests. The Sweep Pad part has sustained chords with long horizontal lines.

79

Percussion

Steel-stGt

Overdrive

FingeredBs

Strings

Sweep Pad

Detailed description: This system of music covers measures 79, 80, and 81. The Percussion part continues with eighth notes. The Steel-string guitar part has more complex chordal textures. The Overdrive part has notes with long horizontal lines. The Fingered Bass part has a bass line with some rests. The Strings part has a melodic line. The Sweep Pad part has sustained chords with long horizontal lines.

82

Percussion

Steel-stGt

Overdrive

FingeredBs

Strings

Sweep Pad

Detailed description: This block contains the musical notation for measures 82 through 85. The Percussion part features a steady eighth-note pattern. The Steel-string guitar (Steel-stGt) and Overdrive parts play a melodic line with a 7/7 time signature. The Fingered Bass (FingeredBs) part provides a bass line with a 7/7 time signature. The Strings part is mostly silent with some initial movement. The Sweep Pad part features a complex, sweeping arpeggiated texture.

86

Percussion

Steel-stGt

Overdrive

FingeredBs

Sweep Pad

Detailed description: This block contains the musical notation for measures 86 through 89. The Percussion part continues with a steady eighth-note pattern. The Steel-string guitar (Steel-stGt) and Overdrive parts continue with the melodic line. The Fingered Bass (FingeredBs) part continues with the bass line. The Sweep Pad part continues with the complex, sweeping arpeggiated texture.

90

Percussion

Steel-stGt

Overdrive

FingeredBs

Sweep Pad

94

Percussion

Steel-stGt

Overdrive

FingeredBs

Sweep Pad

98

Percussion

Steel-stGt

Overdrive

FingeredBs

Sweep Pad

102

Percussion

Steel-stGt

Overdrive

FingeredBs

Strings

Sweep Pad

106

Percussion

Steel-stGt

Overdrive

FingeredBs

Strings

Sweep Pad

110

Percussion

Steel-stGt

Overdrive

FingeredBs

Strings

Sweep Pad

114

Percussion

Steel-stGt

Overdrive

FingeredBs

Strings

Sweep Pad

Detailed description: This system of musical notation covers measures 114 through 117. The Percussion part features a steady eighth-note pattern. The Steel-string guitar (Steel-stGt) and Overdrive parts play a melodic line with a sharp key signature and a 7/8 time signature, characterized by long, sweeping notes. The Fingered Basses (FingeredBs) part provides a bass line with a mix of eighth and quarter notes. The Strings part is silent, indicated by a whole rest. The Sweep Pad part features a complex, layered texture with multiple overlapping notes and a 7/8 time signature.

118

Percussion

Steel-stGt

Overdrive

FingeredBs

Strings

Sweep Pad

Detailed description: This system of musical notation covers measures 118 through 121. The Percussion part continues with its eighth-note pattern. The Steel-string guitar (Steel-stGt) and Overdrive parts continue their melodic line, with some notes being held across measures. The Fingered Basses (FingeredBs) part continues its bass line. The Strings part remains silent. The Sweep Pad part continues its complex, layered texture.

122

Percussion

Steel-stGt

Overdrive

FingeredBs

Strings

Sweep Pad

Pink - Wish You Were Here 2

Percussion

♩ = 125,000000

16

21

27

33

38

43

49

54

59

64

V.S.

69

Musical notation for measure 69, featuring a drum staff with a double bar line and a key signature of one sharp (F#). The notation includes a series of eighth notes with stems pointing down, and a bass line with quarter notes and eighth notes.

75

Musical notation for measure 75, featuring a drum staff with a double bar line and a key signature of one sharp (F#). The notation includes a series of eighth notes with stems pointing down, and a bass line with quarter notes and eighth notes.

81

Musical notation for measure 81, featuring a drum staff with a double bar line and a key signature of one sharp (F#). The notation includes a series of eighth notes with stems pointing down, and a bass line with quarter notes and eighth notes.

87

Musical notation for measure 87, featuring a drum staff with a double bar line and a key signature of one sharp (F#). The notation includes a series of eighth notes with stems pointing down, and a bass line with quarter notes and eighth notes.

92

Musical notation for measure 92, featuring a drum staff with a double bar line and a key signature of one sharp (F#). The notation includes a series of eighth notes with stems pointing down, and a bass line with quarter notes and eighth notes.

98

Musical notation for measure 98, featuring a drum staff with a double bar line and a key signature of one sharp (F#). The notation includes a series of eighth notes with stems pointing down, and a bass line with quarter notes and eighth notes.

103

Musical notation for measure 103, featuring a drum staff with a double bar line and a key signature of one sharp (F#). The notation includes a series of eighth notes with stems pointing down, and a bass line with quarter notes and eighth notes.

108

Musical notation for measure 108, featuring a drum staff with a double bar line and a key signature of one sharp (F#). The notation includes a series of eighth notes with stems pointing down, and a bass line with quarter notes and eighth notes.

114

Musical notation for measure 114, featuring a drum staff with a double bar line and a key signature of one sharp (F#). The notation includes a series of eighth notes with stems pointing down, and a bass line with quarter notes and eighth notes.

119

Musical notation for measure 119, featuring a drum staff with a double bar line and a key signature of one sharp (F#). The notation includes a series of eighth notes with stems pointing down, and a bass line with quarter notes and eighth notes.

Pink - Wish You Were Here 2

Steel-stGt

♩ = 125,000000

7

12

17

22

27

32

38

45

51

V.S.

57



63



69



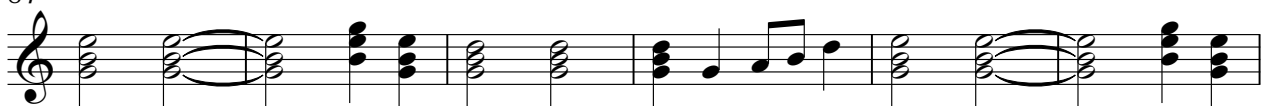
74



79



84



90



96



103



109



Pink - Wish You Were Here 2

Overdrive

♩ = 125,000000

10 4 18

36 4

44 3

51

57

63 5

74

81

87

93

V.S.

2

Overdrive

99



105



111



117



121



♩ = 125,000000

16



22



28



34



40



46



52



58



63



68



Pink - Wish You Were Here 2

Strings

♩ = 125,000000

16 2

22

27

32

37

42

46

49 17

Pink - Wish You Were Here 2

Sweep Pad

♩ = 125,000000

16

22

29

36

43

50

57

64

71

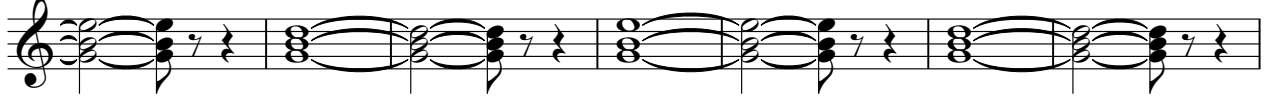
78

Detailed description: The image shows a musical score for a 'Sweep Pad' in 4/4 time. The tempo is marked as ♩ = 125,000000. The score begins at measure 16, indicated by a large '16' above the staff. The first staff shows a whole rest followed by a thick black bar representing a sweep. The subsequent staves contain a series of chords and melodic lines, with measure numbers 22, 29, 36, 43, 50, 57, 64, 71, and 78 marked at the beginning of each line. The chords are primarily triads and dyads, often with a sweep-like motion indicated by the 'Sweep Pad' title and the initial bar. The key signature is one sharp (F#).

V.S.

Sweep Pad

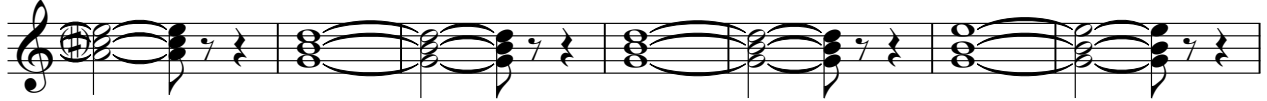
85



92



99



106



113



119

