

Polka & Marsch Muziek Medley`s Tirol - Alpenlander Sti

♩ = 137,001938

MELODY 2

FR.HORN

DRUMS

ACOU BASS

♩ = 137,001938

MELODY 1

A.PIANO

5

MELODY 2

FR.HORN

DRUMS

ACOU BASS

MELODY 1

A.PIANO

9

MELODY 2

FR.HORN

DRUMS

ACOU BASS

MELODY 1

A.PIANO

11

MELODY 2

FR.HORN

DRUMS

ACOU BASS

MELODY 1

A.PIANO

13

MELODY 2

FR.HORN

DRUMS

ACOU BASS

MELODY 1

A.PIANO

15

MELODY 2

FR.HORN

DRUMS

ACOU BASS

MELODY 1

A.PIANO

17

MELODY 2

FR.HORN

DRUMS

ACOU BASS

MELODY 1

A.PIANO

19

MELODY 2

FR.HORN

DRUMS

ACOU BASS

MELODY 1

A.PIANO

21

MELODY 2

FR.HORN

DRUMS

ACOU BASS

MELODY 1

A.PIANO

23

FR.HORN

DRUMS

ACOU BASS

MELODY 1

A.PIANO

25

FR.HORN

DRUMS

ACOU BASS

MELODY 1

A.PIANO

27

FR.HORN

DRUMS

ACOU BASS

MELODY 1

A.PIANO

29

FR.HORN

DRUMS

ACOU BASS

MELODY 1

A.PIANO

31

FR.HORN

DRUMS

ACOU BASS

MELODY 1

A.PIANO

33

FR.HORN

DRUMS

ACOU BASS

MELODY 1

A.PIANO

35

FR.HORN

DRUMS

ACOU BASS

MELODY 1

A.PIANO

37

FR.HORN

DRUMS

ACOU BASS

MELODY 1

A.PIANO

39

DRUMS

ACOU BASS

MELODY 1

A.PIANO

41

DRUMS

ACOUBASS

MELODY 1

A.PIANO

43

DRUMS

ACOUBASS

MELODY 1

A.PIANO

45

FR.HORN

DRUMS

ACOU BASS

MELODY 1

A.PIANO

47

FR.HORN

DRUMS

ACOU BASS

MELODY 1

49

FR.HORN

DRUMS

ACOU BASS

MELODY 1

A.PIANO

51

FR.HORN

DRUMS

ACOU BASS

MELODY 1

A.PIANO

53

MELODY 2

FR.HORN

DRUMS

ACOU BASS

MELODY 1

A.PIANO

55

MELODY 2

FR.HORN

DRUMS

ACOU BASS

MELODY 1

57

MELODY 2

FR.HORN

DRUMS

ACOU BASS

MELODY 1

59

MELODY 2

FR.HORN

DRUMS

ACOU BASS

MELODY 1

65

MELODY 2

FR.HORN

DRUMS

ACOU BASS

MELODY 1

67

MELODY 2

FR.HORN

DRUMS

ACOU BASS

MELODY 1

69

MELODY 2

FR.HORN

DRUMS

ACOU BASS

MELODY 1

71

MELODY 2

FR.HORN

DRUMS

ACOU BASS

MELODY 1

73

MELODY 2

DRUMS

ACOU BASS

MELODY 1

75

MELODY 2

FR.HORN

DRUMS

ACOU BASS

MELODY 1

77

MELODY 2

FR.HORN

DRUMS

ACOU BASS

MELODY 1

79

MELODY 2

DRUMS

ACOU BASS

81

MELODY 2

DRUMS

ACOU BASS

MELODY 1

83

MELODY 2

DRUMS

ACOU BASS

MELODY 1

85

MELODY 2

DRUMS

ACOU BASS

MELODY 1

87

MELODY 2

DRUMS

ACOU BASS

89

MELODY 2

DRUMS

ACOU BASS

MELODY 1

91

MELODY 2

FR.HORN

DRUMS

ACOU BASS

MELODY 1

93

MELODY 2

FR.HORN

DRUMS

ACOU BASS

MELODY 1

A.PIANO

95

FR.HORN

DRUMS

ACOU BASS

MELODY 1

A.PIANO

97

MELODY 2

FR.HORN

DRUMS

ACOU BASS

MELODY 1

A.PIANO

99

MELODY 2

DRUMS

ACOU BASS

MELODY 1

101

MELODY 2

FR.HORN

DRUMS

ACOU BASS

MELODY 1

A.PIANO

103

FR.HORN

DRUMS

ACOU BASS

MELODY 1

A.PIANO

105

MELODY 2

FR.HORN

DRUMS

ACOU BASS

MELODY 1

A.PIANO

107

MELODY 2

FR.HORN

DRUMS

ACOU BASS

MELODY 1

A.PIANO

109

MELODY 2

Musical staff for MELODY 2 in treble clef, key of B-flat major. It features a melodic line with eighth and sixteenth notes, including a chromatic run. The staff ends with a double bar line.

FR.HORN

Musical staff for FR.HORN in treble clef, key of B-flat major. It contains a series of chords and melodic fragments, primarily using eighth and sixteenth notes. The staff ends with a double bar line.

DRUMS

Musical staff for DRUMS in a standard drum notation format. It shows a rhythmic pattern with various drum symbols and a cymbal crash. The staff ends with a double bar line.

ACOU BASS

Musical staff for ACOU BASS in bass clef, key of B-flat major. It features a simple bass line with eighth and sixteenth notes. The staff ends with a double bar line.

MELODY 1

Musical staff for MELODY 1 in treble clef, key of B-flat major. It contains a melodic line with eighth and sixteenth notes, including a chromatic run. The staff ends with a double bar line.

A.PIANO

Musical staff for A.PIANO in treble clef, key of B-flat major. It features a melodic line with eighth and sixteenth notes, including a chromatic run. The staff ends with a double bar line.

MELODY 2

Polka & Marsch Muziek Medley`s Tirol - Alpenlander Sti

♩ = 137,001938

8

14

18

22

32

57

62

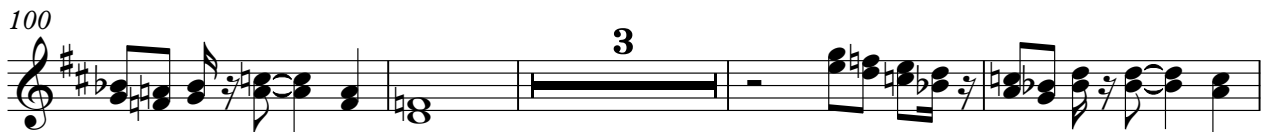
66

70

74

V.S.

MELODY 2



FR.HORN

Polka & Marsch Muziek Medley`s Tirol - Alpenlander Sti

♩ = 137,001938

6

9

12

15

18

21

24

27

30

V.S.



71



2

Musical notation for measure 71, featuring a treble clef, a key signature of one sharp (F#), and a common time signature. The notation includes a series of chords and eighth notes, with a fermata over the final two notes. A measure rest for 2 measures is indicated by a horizontal line with the number 2 above it.

76



14

Musical notation for measure 76, featuring a treble clef, a key signature of one sharp (F#), and a common time signature. The notation includes a series of chords and eighth notes, with a fermata over the final two notes. A measure rest for 14 measures is indicated by a horizontal line with the number 14 above it.

92



Musical notation for measure 92, featuring a treble clef, a key signature of one sharp (F#), and a common time signature. The notation includes a series of chords and eighth notes, with a fermata over the final two notes.

95



3

Musical notation for measure 95, featuring a treble clef, a key signature of one sharp (F#), and a common time signature. The notation includes a series of chords and eighth notes, with a fermata over the final two notes. A measure rest for 3 measures is indicated by a horizontal line with the number 3 above it.

101



Musical notation for measure 101, featuring a treble clef, a key signature of one sharp (F#), and a common time signature. The notation includes a series of chords and eighth notes, with a fermata over the final two notes.

104



2

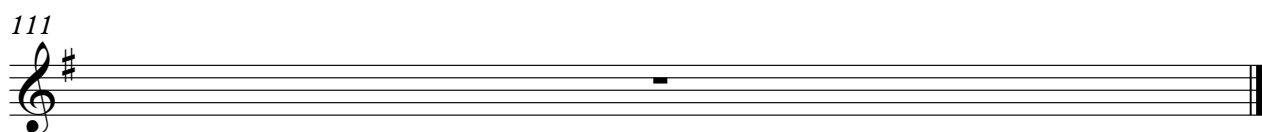
Musical notation for measure 104, featuring a treble clef, a key signature of one sharp (F#), and a common time signature. The notation includes a series of chords and eighth notes, with a fermata over the final two notes. A measure rest for 2 measures is indicated by a horizontal line with the number 2 above it.

108



Musical notation for measure 108, featuring a treble clef, a key signature of one sharp (F#), and a common time signature. The notation includes a series of chords and eighth notes, with a fermata over the final two notes.

111



Musical notation for measure 111, featuring a treble clef, a key signature of one sharp (F#), and a common time signature. The notation includes a series of chords and eighth notes, with a fermata over the final two notes.

DRUMS

Polka & Marsch Muziek Medley`s Tirol - Alpenlander Sti

♩ = 137,001938

7

11

15

19

23

27

31

35

39

V.S.

43

Drum notation for measures 43-46. Each measure contains a series of eighth notes with 'x' marks above them, indicating a specific drum sound. The notation is written on a five-line staff with a double bar line at the beginning.

47

Drum notation for measures 47-50. Each measure contains a series of eighth notes with 'x' marks above them, indicating a specific drum sound. The notation is written on a five-line staff with a double bar line at the beginning.

51

Drum notation for measures 51-54. Each measure contains a series of eighth notes with 'x' marks above them, indicating a specific drum sound. The notation is written on a five-line staff with a double bar line at the beginning.

55

Drum notation for measures 55-58. Each measure contains a series of eighth notes with 'x' marks above them, indicating a specific drum sound. The notation is written on a five-line staff with a double bar line at the beginning.

59

Drum notation for measures 59-62. Each measure contains a series of eighth notes with 'x' marks above them, indicating a specific drum sound. The notation is written on a five-line staff with a double bar line at the beginning.

63

Drum notation for measures 63-66. Each measure contains a series of eighth notes with 'x' marks above them, indicating a specific drum sound. The notation is written on a five-line staff with a double bar line at the beginning.

67

Drum notation for measures 67-70. Each measure contains a series of eighth notes with 'x' marks above them, indicating a specific drum sound. The notation is written on a five-line staff with a double bar line at the beginning.

71

Drum notation for measures 71-74. Each measure contains a series of eighth notes with 'x' marks above them, indicating a specific drum sound. The notation is written on a five-line staff with a double bar line at the beginning.

75

Drum notation for measures 75-78. Each measure contains a series of eighth notes with 'x' marks above them, indicating a specific drum sound. The notation is written on a five-line staff with a double bar line at the beginning.

79

Drum notation for measures 79-82. Each measure contains a series of eighth notes with 'x' marks above them, indicating a specific drum sound. The notation is written on a five-line staff with a double bar line at the beginning.

DRUMS

83

Musical notation for drum part 83-86. It consists of four measures on a five-line staff. The first three measures each contain four eighth notes with an 'x' above them, indicating a specific drum sound. The fourth measure contains a quarter note with an 'x' above it, followed by three eighth notes with 'x' above them.

87

Musical notation for drum part 87-90. It consists of four measures on a five-line staff. Each measure contains four eighth notes with an 'x' above them, indicating a specific drum sound.

91

Musical notation for drum part 91-94. It consists of four measures on a five-line staff. The first three measures each contain four eighth notes with an 'x' above them. The fourth measure contains a quarter note with an 'x' above it, followed by three eighth notes with 'x' above them.

95

Musical notation for drum part 95-98. It consists of four measures on a five-line staff. Each measure contains four eighth notes with an 'x' above them, indicating a specific drum sound.

99

Musical notation for drum part 99-102. It consists of four measures on a five-line staff. The first three measures each contain four eighth notes with an 'x' above them. The fourth measure contains a quarter note with an 'x' above it, followed by three eighth notes with 'x' above them.

103

Musical notation for drum part 103-106. It consists of four measures on a five-line staff. Each measure contains four eighth notes with an 'x' above them, indicating a specific drum sound.

107

Musical notation for drum part 107-110. It consists of four measures on a five-line staff. The first three measures each contain four eighth notes with an 'x' above them. The fourth measure contains a quarter note with an 'x' above it, followed by three eighth notes with 'x' above them.

111

Empty musical notation for drum part 111, consisting of a five-line staff with a double bar line at the end.

ACOU BASS

Polka & Marsch Muziek Medley`s Tirol - Alpenlander Sti

♩ = 137,001938



V.S.

33



36



39



42



45



48



51



54



57



60



63



66



69



72



75



78



81



84



87



90



V.S.

93



96



99



102



105



108



111



MELODY 1

Polka & Marsch Muziek Medley`s Tirol - Alpenlander Sti

♩ = 137,001938

7

11

15

20

25

30

V.S.

35

38

41

44

47

50

53

57

MELODY 1

61



66



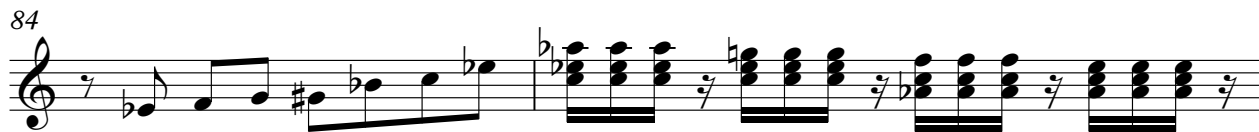
72



77



84



86



92

95

98

102

106

109

A.PIANO

Polka & Marsch Muziek Medley`s Tirol - Alpenlander Sti

♩ = 137,001938

2

9

2

16

21

25

29

33

37

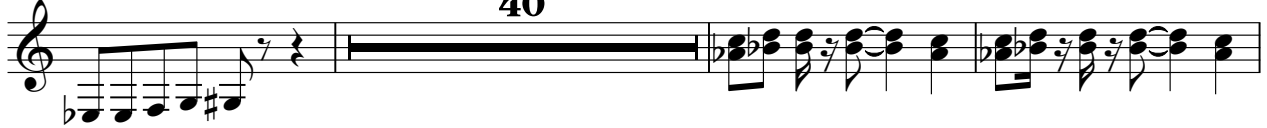
42

3

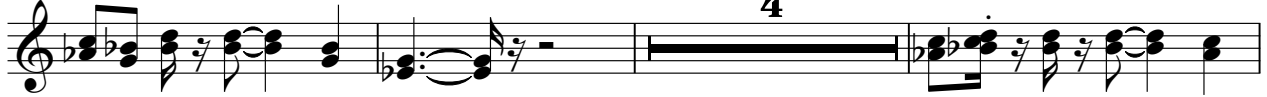
49



53



96



103



106



111

