

Radio Head - Creep

♩ = 128,000000

Musical score for the first system of 'Creep' by Radiohead. The score is in 3/4 time and includes five staves: SNARE2.SA, BASSDRM1., ELCGIT2.S, BASSGIT3., and MELODIE. The tempo is marked as ♩ = 128,000000. The SNARE2.SA staff shows a drum pattern with snare and bass drum hits. The BASSDRM1. staff shows a bass drum pattern. The ELCGIT2.S staff is empty. The BASSGIT3. staff shows a bass guitar line with eighth notes and a final quarter note. The MELODIE staff is empty.

♩ = 128,000000

Musical score for the second system of 'Creep' by Radiohead. The score is in 3/4 time and includes three staves: SNARE2.SA, BASSDRM1., and BASSGIT3. The tempo is marked as ♩ = 128,000000. The SNARE2.SA staff shows a drum pattern with snare and bass drum hits. The BASSDRM1. staff shows a bass drum pattern. The BASSGIT3. staff shows a bass guitar line with eighth notes and a final quarter note. A measure number '6' is written above the first measure of the SNARE2.SA staff.

11

SNARE2.SA

BASSDRM1.

GUITAR1.S

BASSGIT3.

16

SNARE2.SA

BASSDRM1.

GUITAR1.S

BASSGIT3.

20

SNARE2.SA

BASSDRM1.

GUITAR1.S

BASSGIT3.

MELODIE

24

SNARE2.SA

BASSDRM1.

GUITAR1.S

BASSGIT3.

MELODIE

28

SNARE2.SA

BASSDRM1.

GUITAR1.S

BASSGIT3.

MELODIE

32

SNARE2.SA

BASSDRM1.

GUITAR1.S

BASSGIT3.

MELODIE

36

SNARE2.SA

BASSDRM1.

GUITAR1.S

BASSGIT3.

MELODIE

40

SNARE2.SA

BASSDRM1.

ELCGIT2.S

GUITAR1.S

BASSGIT3.

MELODIE

44

SNARE2.SA

BASSDRM1.

ELCGIT2.S

GUITAR1.S

BASSGIT3.

MELODIE

49

SNARE2.SA

BASSDRM1.

ELCGIT2.S

BASSGIT3.

MELODIE

54

SNARE2.SA

BASSDRM1.

ELCGIT2.S

GUITAR1.S

BASSGIT3.

MELODIE

58

SNARE2.SA

BASSDRM1.

GUITAR1.S

BASSGIT3.

MELODIE

62

SNARE2.SA

BASSDRM1.

GUITAR1.S

BASSGIT3.

MELODIE

66

SNARE2.SA

BASSDRM1.

GUITAR1.S

BASSGIT3.

MELODIE

70

SNARE2.SA
BASSDRM1.
GUITAR1.S
BASSGIT3.
MELODIE

Detailed description: This musical system covers measures 70 to 73. It features five staves: SNARE2.SA (snare drum), BASSDRM1. (bass drum), GUITAR1.S (guitar), BASSGIT3. (bass guitar), and MELODIE (melody). The snare and bass drums play a consistent rhythmic pattern. The guitar and bass guitar parts are in a driving eighth-note groove. The melody line starts with a quarter rest, followed by a quarter note with a sharp sign, and continues with eighth-note patterns.

74

SNARE2.SA
BASSDRM1.
ELCGIT2.S
GUITAR1.S
BASSGIT3.
MELODIE

Detailed description: This musical system covers measures 74 to 77. It features six staves: SNARE2.SA (snare drum), BASSDRM1. (bass drum), ELCGIT2.S (electric guitar), GUITAR1.S (guitar), BASSGIT3. (bass guitar), and MELODIE (melody). The drum parts remain consistent. The electric guitar part (ELCGIT2.S) has a more active role, playing eighth-note patterns. The guitar and bass guitar parts continue their rhythmic patterns. The melody line has a quarter rest, followed by a quarter note with a sharp sign, and continues with eighth-note patterns.

79

SNARE2.SA

BASSDRM1.

ELCGIT2.S

BASSGIT3.

MELODIE

84

SNARE2.SA

BASSDRM1.

ELCGIT2.S

BASSGIT3.

MELODIE

89

SNARE2.SA

BASSDRM1.

ELCGIT2.S

BASSGIT3.

MELODIE

Detailed description: This system contains five staves. SNARE2.SA (snare drum) has a simple pattern of quarter notes and rests. BASSDRM1 (bass drum) has a pattern of eighth notes and quarter notes. ELCGIT2.S (electric guitar 2) plays a steady eighth-note accompaniment. BASSGIT3 (bass guitar) plays a walking bass line with eighth notes and quarter notes. MELODIE (melody) is in treble clef, featuring a sequence of eighth notes with some accidentals (sharps and naturals).

94

SNARE2.SA

BASSDRM1.

ELCGIT2.S

GUITAR1.S

BASSGIT3.

MELODIE

Detailed description: This system contains six staves. SNARE2.SA and BASSDRM1 continue their rhythmic patterns. ELCGIT2.S plays eighth notes until measure 97, then rests. GUITAR1.S (acoustic guitar) has rests until measure 97, then plays a melodic line. BASSGIT3 continues its bass line. MELODIE continues its melodic line, ending with a quarter rest in measure 98.

99

SNARE2.SA

BASSDRM1.

GUITAR1.S

BASSGIT3.

MELODIE

103

SNARE2.SA

BASSDRM1.

GUITAR1.S

BASSGIT3.

MELODIE

107

SNARE2.SA

BASSDRM1.

GUITAR1.S

BASSGIT3.

MELODIE

111

SNARE2.SA

BASSDRM1.

GUITAR1.S

BASSGIT3.

MELODIE

115

SNARE2.SA

BASSDRM1.

GUITAR1.S

BASSGIT3.

MELODIE

119

HIHAT2.SA

SNARE2.SA

GUITAR1.S

BASSGIT3.

MELODIE

124

HIHAT2.SA

BASSGIT3.

MELODIE

129

HIHAT2.SA

BASSGIT3.

MELODIE


132

BASSGIT3.


MELODIE

♩ = 128,000000

118



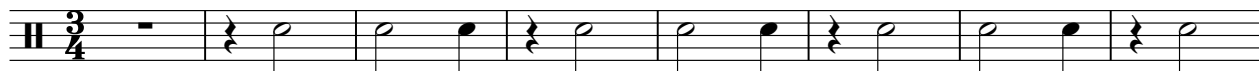
124



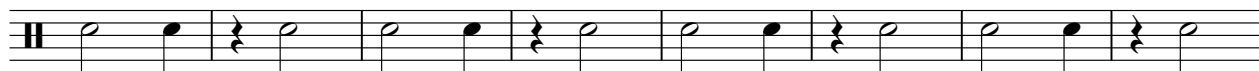
SNARE2.SA

Radio Head - Creep

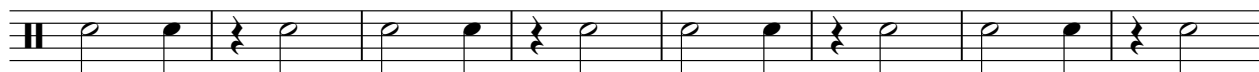
♩ = 128,000000



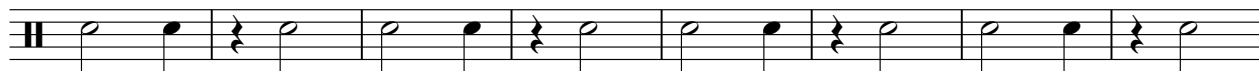
9



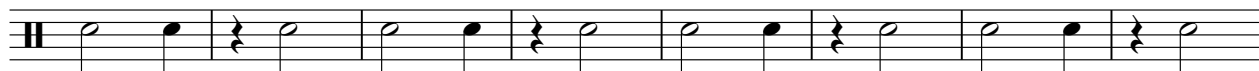
17



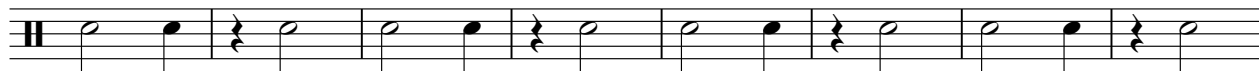
25



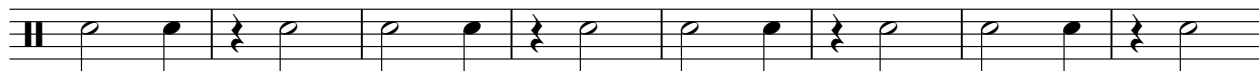
33



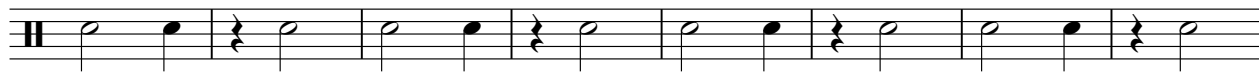
41



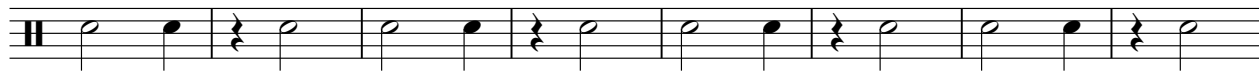
49



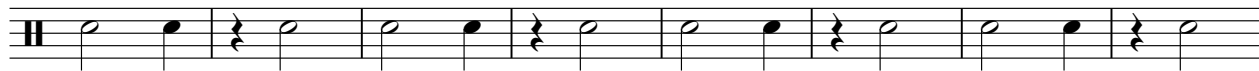
57



65



73

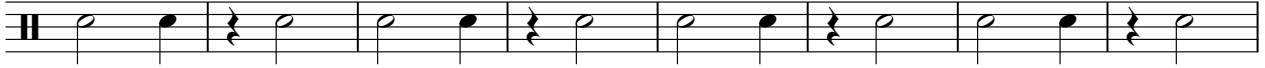


V.S.

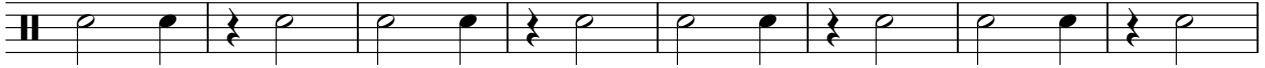
2

SNARE2.SA

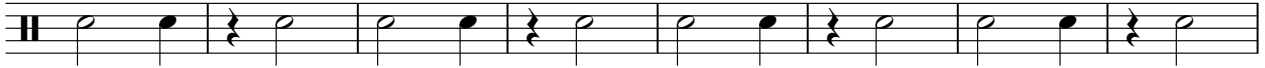
81



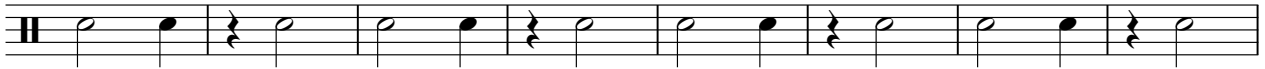
89



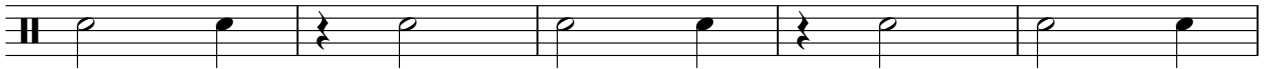
97



105



113



118



17

♩ = 128,000000



9



16



23



30



37



44



51



58



65



2

BASSDRM1.

72



79



86



93



100



107



114



18

♩ = 128,000000

40



A single musical staff in 3/4 time. It starts with a whole rest in the first measure, followed by a 40-measure rest. The piece then resumes with a quarter rest, an eighth rest, and a quarter note on G4. This is followed by a quarter rest, a quarter note on A4, a quarter rest, a quarter rest, and finally a quarter note on B4.

46



A musical staff containing measures 46 through 53. Each measure consists of two eighth notes, starting with G4 and ending with A4. The sequence of notes is: G4, A4, G4, A4, G4, A4, G4, A4, G4, A4, G4, A4, G4, A4, G4, A4, G4, A4.

54

18



A musical staff starting at measure 54. It begins with two eighth notes (G4, A4), followed by two quarter rests. This is followed by an 18-measure rest. The piece then resumes with a quarter rest, an eighth rest, and a quarter note on G4. This is followed by a quarter rest, a quarter note on A4, a quarter rest, a quarter rest, and finally a quarter note on B4.

78



A musical staff containing measures 78 through 85. Each measure consists of two eighth notes, starting with G4 and ending with A4. The sequence of notes is: G4, A4, G4, A4, G4, A4, G4, A4, G4, A4, G4, A4, G4, A4, G4, A4, G4, A4.


86



A musical staff containing measures 86 through 92. Each measure consists of two eighth notes, starting with G4 and ending with A4. The sequence of notes is: G4, A4, G4, A4, G4, A4, G4, A4, G4, A4, G4, A4, G4, A4, G4, A4, G4, A4.

93

39



A musical staff starting at measure 93. It begins with two eighth notes (G4, A4), followed by two quarter notes (G4, A4), followed by two eighth notes (G4, A4). This is followed by a 39-measure rest.

♩ = 128,000000

11

16

21

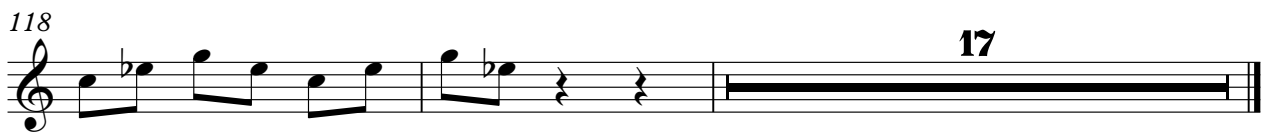
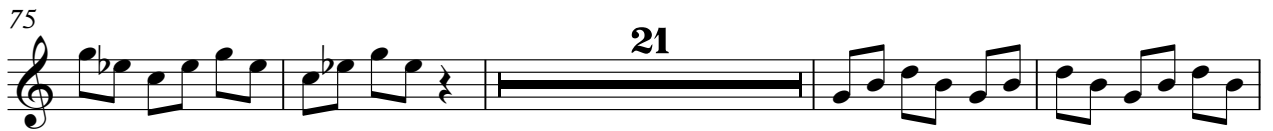
26

31

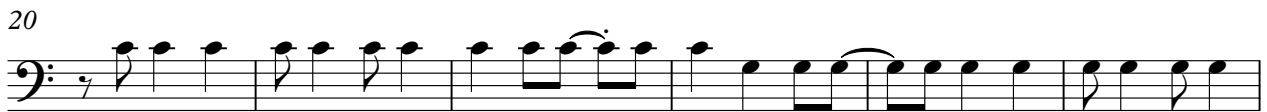
36

41

10



♩ = 128,000000



122



127



MELODIE

Radio Head - Creep

♩ = 128,000000

20

26

33

39

46

52

59

66

