

Roberta Flack - The First Time Ever I Saw Your Face

♩ = 72,000290

DRUMS

STEEL GTR

FRETLESS

E.PIANO 2

E.PIANO 2

♩ = 72,000290

SYN STR 1

6

DRUMS

STEEL GTR

FRETLESS

E.PIANO 2

E.PIANO 2

SYN STR 1

Detailed description: This system contains measures 6, 7, and 8. The DRUMS part features a pattern of eighth notes with 'x' marks above them, indicating muffled hits. The STEEL GTR part has a melodic line with various accidentals and a key signature change to one flat. The FRETLESS part has a simple bass line. The two E.PIANO 2 parts provide harmonic support with chords and single notes. The SYN STR 1 part has a long, sustained chord in the first measure that changes in the second and third measures.



9

DRUMS

STEEL GTR

FRETLESS

E.PIANO 2

E.PIANO 2

SYN STR 1

Detailed description: This system contains measures 9, 10, and 11. The DRUMS part continues with a similar eighth-note pattern. The STEEL GTR part has a more active melodic line with many sixteenth notes. The FRETLESS part has a steady bass line. The two E.PIANO 2 parts continue with harmonic accompaniment. The SYN STR 1 part has a melodic line with some sustained notes.

12

DRUMS

STEEL GTR

FRETLESS

E.PIANO 2

E.PIANO 2

SYN STR 1



15

DRUMS

STEEL GTR

FRETLESS

E.PIANO 2

E.PIANO 2

SYN STR 1

18

DRUMS

STEEL GTR

FRETLESS

E.PIANO 2

E.PIANO 2

SYN STR 1



21

DRUMS

STEEL GTR

FRETLESS

E.PIANO 2

E.PIANO 2

SYN STR 1

24

DRUMS

STEEL GTR

FRETLESS

E.PIANO 2

E.PIANO 2

SYN STR 1

27

DRUMS

STEEL GTR

FRETLESS

E.PIANO 2

E.PIANO 2

SYN STR 1

Detailed description of the musical score: The score is divided into two systems, measures 24-26 and 27-29. The first system (measures 24-26) includes: DRUMS (top staff, snare and hi-hat patterns), STEEL GTR (treble clef, rhythmic patterns), FRETLESS (bass clef, melodic lines), E.PIANO 2 (two staves, bass clef, chords and single notes), and SYN STR 1 (treble clef, sustained chords). The second system (measures 27-29) includes: DRUMS (top staff, snare and hi-hat patterns), STEEL GTR (treble clef, rhythmic patterns), FRETLESS (bass clef, melodic lines), E.PIANO 2 (two staves, bass clef, chords and single notes), and SYN STR 1 (treble clef, sustained chords). A double bar line is present between the two systems.

30

DRUMS

STEEL GTR

FRETLESS

E.PIANO 2

E.PIANO 2

SYN STR 1



33

DRUMS

STEEL GTR

FRETLESS

E.PIANO 2

E.PIANO 2

SYN STR 1

36

DRUMS

STEEL GTR

FRETLESS

E.PIANO 2

E.PIANO 2

SYN STR 1



39

DRUMS

STEEL GTR

FRETLESS

E.PIANO 2

E.PIANO 2

SYN STR 1

42

DRUMS

STEEL GTR

FRETLESS

E.PIANO 2

E.PIANO 2

SYN STR 1



45

DRUMS

STEEL GTR

FRETLESS

E.PIANO 2

E.PIANO 2

SYN STR 1



48

DRUMS

STEEL GTR

FRETLESS

E.PIANO 2

E.PIANO 2

SYN STR 1



51

DRUMS

STEEL GTR

FRETLESS

E.PIANO 2

E.PIANO 2

SYN STR 1

54

DRUMS

STEEL GTR

FRETLESS

E.PIANO 2

E.PIANO 2

SYN STR 1



57

DRUMS

STEEL GTR

FRETLESS

E.PIANO 2

E.PIANO 2

SYN STR 1

60

DRUMS

STEEL GTR

FRETLESS

E.PIANO 2

E.PIANO 2

SYN STR 1



63

DRUMS

STEEL GTR

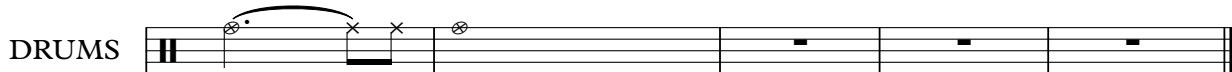
FRETLESS

E.PIANO 2

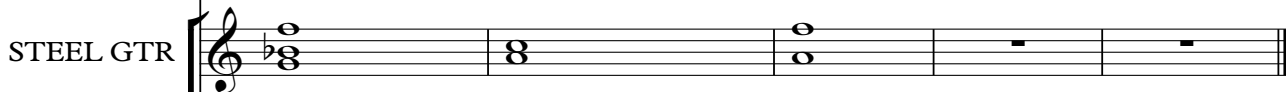
E.PIANO 2

SYN STR 1

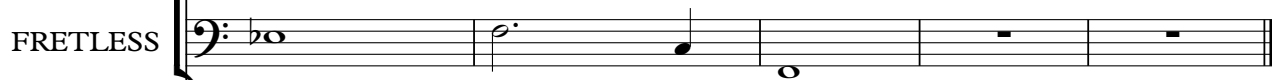
DRUMS



STEEL GTR



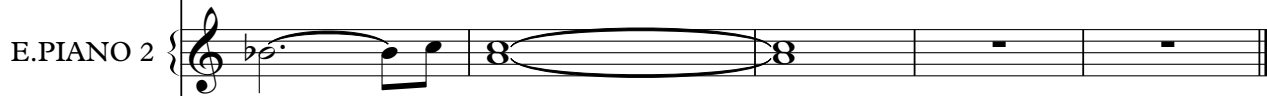
FRETLESS



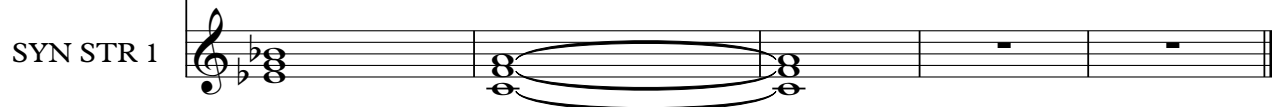
E.PIANO 2



E.PIANO 2



SYN STR 1



Roberta Flack - The First Time Ever I Saw Your Face

DRUMS

♩ = 72,000290

2

8

12

16

20

24

28

32

36

40

V.S.

2

# DRUMS

44

Drum notation for measures 44-47. The top staff shows a consistent pattern of eighth notes with 'x' marks above them, indicating a cymbal effect. The bottom staff shows a bass drum pattern of eighth notes. Measure 45 features a triangle symbol above the bass drum staff, indicating a hi-hat.

48

Drum notation for measures 48-51. The top staff shows a consistent pattern of eighth notes with 'x' marks above them, indicating a cymbal effect. The bottom staff shows a bass drum pattern of eighth notes. Measure 49 features a triangle symbol above the bass drum staff, indicating a hi-hat.

52

Drum notation for measures 52-55. The top staff shows a consistent pattern of eighth notes with 'x' marks above them, indicating a cymbal effect. The bottom staff shows a bass drum pattern of eighth notes. Measure 53 features a triangle symbol above the bass drum staff, indicating a hi-hat.

56

Drum notation for measures 56-59. The top staff shows a consistent pattern of eighth notes with 'x' marks above them, indicating a cymbal effect. The bottom staff shows a bass drum pattern of eighth notes. Measure 57 features a triangle symbol above the bass drum staff, indicating a hi-hat.

60

Drum notation for measures 60-63. The top staff shows a consistent pattern of eighth notes with 'x' marks above them, indicating a cymbal effect. The bottom staff shows a bass drum pattern of eighth notes. Measure 61 features a triangle symbol above the bass drum staff, indicating a hi-hat.

64

Drum notation for measures 64-67. The top staff shows a consistent pattern of eighth notes with 'x' marks above them, indicating a cymbal effect. The bottom staff shows a bass drum pattern of eighth notes. Measure 65 features a triangle symbol above the bass drum staff, indicating a hi-hat. Measure 66 features a cymbal effect symbol above the top staff. Measure 67 features a cymbal effect symbol above the top staff and a large number '3' above the staff, indicating a triple measure.

♩ = 72,000290

2

7

10

14

18

22

26

30

34

38

V.S.

42



45



49



52



56



60



64





FRETLESS

Roberta Flack - The First Time Ever I Saw Your Face

♩ = 72,000290

2

9

14

19

24

29

34

39

44

49

V.S.

2

FRETLESS

54



59



64



2

♩ = 72,000290

2

2

b8

9

15

21

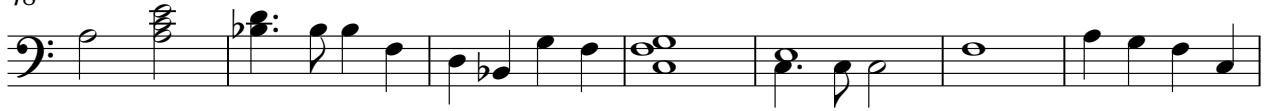
28

34

41

V.S.

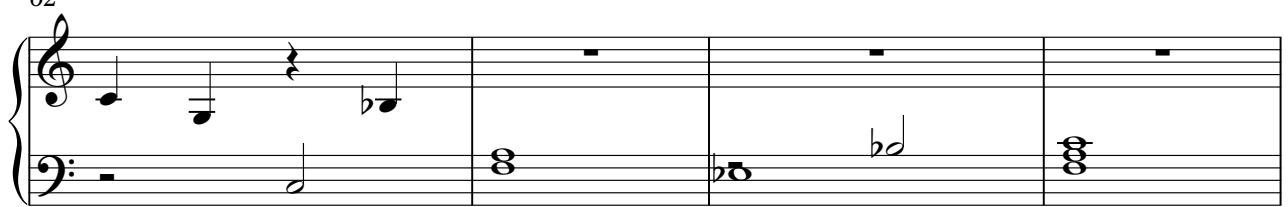
48



55



62



66



2

E.PIANO 2

Roberta Flack - The First Time Ever I Saw Your Face

♩ = 72,000290

2

8

8

14

14

19

19

25

25

31

31

36

36

V.S.

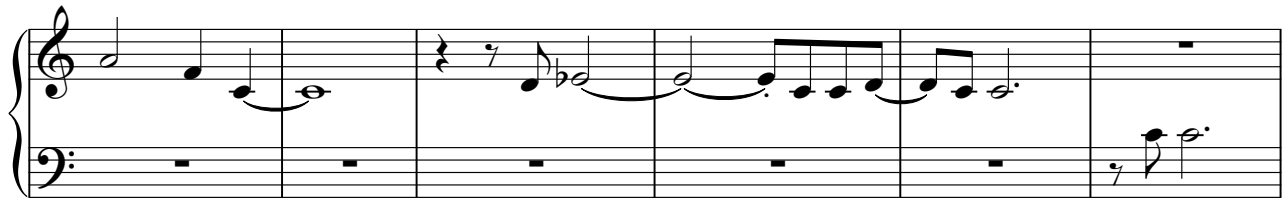
42



48



53



59



64



2

Roberta Flack - The First Time Ever I Saw Your Face

SYN STR 1

♩ = 72,000290

2

10

17

23

30

36

42

48

54

60

V.S.

2

SYN STR 1

64

2