

Roger Mac2 - Ub 40

♩ = 93,000038

Drums

Steel drums

Acoustic bass

Muted trumpet

FX 1 rain

♩ = 93,000038

3

Drums

Steel drums

Acoustic bass

Muted trumpet

FX 1 rain

4

Drums

Steel drums

Acoustic bass

Muted trumpet

FX 1 rain

Detailed description: This block contains the musical notation for measures 4 and 5. It features five staves: Drums, Steel drums, Acoustic bass, Muted trumpet, and FX 1 rain. Measure 4 is marked with a '4' above the staff. The Drums staff shows a complex rhythmic pattern with various note values and rests. The Steel drums staff has a treble clef and contains chords and single notes. The Acoustic bass staff has a bass clef and shows a melodic line. The Muted trumpet staff has a treble clef and contains a melodic line with a slur. The FX 1 rain staff has a treble clef and contains chords and single notes.

5

Drums

Steel drums

Acoustic bass

Muted trumpet

FX 1 rain

Detailed description: This block contains the musical notation for measures 5 and 6. It features five staves: Drums, Steel drums, Acoustic bass, Muted trumpet, and FX 1 rain. Measure 5 is marked with a '5' above the staff. The Drums staff shows a complex rhythmic pattern. The Steel drums staff has a treble clef and contains chords and single notes. The Acoustic bass staff has a bass clef and shows a melodic line. The Muted trumpet staff has a treble clef and contains a melodic line with a slur and a triplet of notes. The FX 1 rain staff has a treble clef and contains chords and single notes.

6

Drums

Steel drums

Acoustic bass

Muted trumpet

FX 1 rain

Detailed description: This block contains the musical notation for measures 6 and 7. It features five staves: Drums, Steel drums, Acoustic bass, Muted trumpet, and FX 1 rain. Measure 6 is marked with a '6' at the beginning. The Drums staff shows a complex rhythmic pattern with various note values and rests. The Steel drums staff has a treble clef and contains chords and single notes. The Acoustic bass staff has a bass clef and shows a melodic line. The Muted trumpet staff has a treble clef and contains a melodic line with some rests. The FX 1 rain staff has a treble clef and contains chords and single notes.

7

Drums

Steel drums

Acoustic bass

Muted trumpet

FX 1 rain

Detailed description: This block contains the musical notation for measures 7 and 8. It features five staves: Drums, Steel drums, Acoustic bass, Muted trumpet, and FX 1 rain. Measure 7 is marked with a '7' at the beginning. The Drums staff continues the rhythmic pattern from measure 6. The Steel drums staff continues with chords and single notes. The Acoustic bass staff continues with a melodic line. The Muted trumpet staff has a treble clef and contains a melodic line with a triplet of eighth notes in measure 8. The FX 1 rain staff continues with chords and single notes.

8

Drums

Steel drums

Acoustic bass

Muted trumpet

FX 1 rain

Detailed description: This system contains measures 8 through 11. The Drums part features a consistent pattern of eighth notes with 'x' marks above them, indicating cymbal hits. The Steel drums part has a melodic line with a key signature change from one sharp to one flat between measures 9 and 10. The Acoustic bass part provides a steady bass line with eighth notes. The Muted trumpet part has a few notes in measures 8 and 9. The FX 1 rain part consists of rhythmic patterns with chords, including a key signature change from one sharp to one flat between measures 9 and 10.

9

Drums

Steel drums

Acoustic bass

Muted trumpet

FX 1 rain

Detailed description: This system contains measures 12 through 15. The Drums part continues with the same eighth-note pattern and cymbal hits. The Steel drums part continues its melodic line, now in a key signature of one flat. The Acoustic bass part continues with eighth notes, including some rests. The Muted trumpet part has a few notes in measures 13 and 14. The FX 1 rain part continues with rhythmic patterns and chords, maintaining the one flat key signature.

10

Drums

Steel drums

Acoustic bass

Muted trumpet

FX 1 rain

Detailed description: This system contains measures 10 and 11. The Drums part features a complex rhythmic pattern with various note values and rests. The Steel drums part consists of chords and single notes, with a key signature change to one flat (B-flat) in measure 11. The Acoustic bass part has a melodic line with eighth and quarter notes. The Muted trumpet part has a few chords. The FX 1 rain part has a rhythmic pattern of chords and rests.

11

Drums

Steel drums

Acoustic bass

Muted trumpet

FX 1 rain

Detailed description: This system contains measures 11 and 12. The Drums part continues with its rhythmic pattern. The Steel drums part has chords and notes, with a key signature change to one sharp (F#) in measure 12. The Acoustic bass part has a melodic line. The Muted trumpet part has a triplet of notes in measure 12. The FX 1 rain part has a rhythmic pattern of chords and rests.

12

Drums

Steel drums

Acoustic bass

Muted trumpet

FX 1 rain

3

Detailed description: This block contains the musical notation for measures 12 and 13. The score is arranged in five staves. The top staff is for Drums, showing a pattern of eighth notes and rests with 'x' marks above some notes. The second staff is for Steel drums, featuring chords and rests. The third staff is for Acoustic bass, with a melodic line in bass clef. The fourth staff is for Muted trumpet, showing chords and a triplet of eighth notes in measure 13. The bottom staff is for FX 1 rain, with chords and rests. A measure rest is present in measure 12 for the Muted trumpet part.

13

Drums

Steel drums

Acoustic bass

Muted trumpet

FX 1 rain

3

Detailed description: This block contains the musical notation for measures 13 and 14. The score is arranged in five staves. The top staff is for Drums, showing a pattern of eighth notes and rests with 'x' marks above some notes. The second staff is for Steel drums, featuring chords and rests. The third staff is for Acoustic bass, with a melodic line in bass clef. The fourth staff is for Muted trumpet, showing chords and a triplet of eighth notes in measure 14. The bottom staff is for FX 1 rain, with chords and rests.

14

Drums

Steel drums

Acoustic bass

Muted trumpet

FX 1 rain

Detailed description: This block contains the musical notation for measures 14 and 15. The score is arranged in five staves. The top staff is for Drums, showing a complex rhythmic pattern with various note values and rests. The second staff is for Steel drums, featuring a melodic line with eighth and sixteenth notes. The third staff is for Acoustic bass, with a bass line consisting of quarter and eighth notes. The fourth staff is for Muted trumpet, which has a few notes in measure 14 and is silent in measure 15. The bottom staff is for FX 1 rain, providing a rhythmic accompaniment with eighth notes and rests.

15

Drums

Steel drums

Acoustic bass

Muted trumpet

FX 1 rain

Detailed description: This block contains the musical notation for measures 15 and 16. The score is arranged in five staves. The top staff is for Drums, continuing the rhythmic pattern from the previous block. The second staff is for Steel drums, with a melodic line. The third staff is for Acoustic bass, with a bass line. The fourth staff is for Muted trumpet, which has a triplet of notes in measure 15 and is silent in measure 16. The bottom staff is for FX 1 rain, providing a rhythmic accompaniment.

16

Drums

Steel drums

Acoustic bass

Muted trumpet

FX 1 rain

17

Drums

Steel drums

Acoustic bass

Muted trumpet

FX 1 rain

18

Drums

Steel drums

Acoustic bass

Muted trumpet

FX 1 rain

Detailed description: This system of musical notation covers measures 18 through 21. The Drums part features a complex rhythmic pattern with various note values and rests. The Steel drums part consists of chords and single notes, some with grace notes. The Acoustic bass part has a melodic line with eighth and quarter notes. The Muted trumpet part has a few notes, including a long slur. The FX 1 rain part has a rhythmic accompaniment with chords and single notes.

19

Drums

Steel drums

Acoustic bass

Muted trumpet

FX 1 rain

Detailed description: This system of musical notation covers measures 22 through 25. The Drums part continues with a similar rhythmic pattern. The Steel drums part has chords and single notes. The Acoustic bass part has a melodic line with eighth and quarter notes. The Muted trumpet part has a few notes, including a long slur. The FX 1 rain part has a rhythmic accompaniment with chords and single notes.

20

Drums

Steel drums

Acoustic bass

Muted trumpet

FX 1 rain

21

Whistle

Drums

Steel drums

Acoustic bass

Muted trumpet

FX 1 rain

22

Whistle

Drums

Steel drums

Acoustic bass

Muted trumpet

FX 1 rain

23

Drums

Steel drums

Acoustic bass

Muted trumpet

FX 1 rain

24

Drums

Steel drums

Acoustic bass

Muted trumpet

FX 1 rain

25

Whistle

Drums

Steel drums

Acoustic bass

Muted trumpet

FX 1 rain

26

Whistle

Drums

Steel drums

Acoustic bass

Muted trumpet

FX 1 rain

Detailed description: This block contains the musical notation for measures 26 and 27. The score is arranged in six staves. The Whistle staff (top) has a treble clef and a key signature of one sharp (F#). It features a melodic line with a triplet of eighth notes in measure 27. The Drums staff uses a drum set icon and contains a complex rhythmic pattern with various note values and rests. The Steel drums staff has a treble clef and a key signature of one sharp, with a melodic line consisting of eighth notes and rests. The Acoustic bass staff has a bass clef and a key signature of one sharp, with a melodic line of eighth notes. The Muted trumpet staff has a treble clef and a key signature of one sharp, with a melodic line of eighth notes and rests. The FX 1 rain staff has a treble clef and a key signature of one sharp, with a melodic line of eighth notes and rests.

27

Whistle

Drums

Steel drums

Acoustic bass

Muted trumpet

FX 1 rain

Detailed description: This block contains the musical notation for measures 27 and 28. The score is arranged in six staves. The Whistle staff (top) has a treble clef and a key signature of one flat (Bb). It features a melodic line with a triplet of eighth notes in measure 27. The Drums staff uses a drum set icon and contains a complex rhythmic pattern with various note values and rests. The Steel drums staff has a treble clef and a key signature of one flat, with a melodic line consisting of eighth notes and rests. The Acoustic bass staff has a bass clef and a key signature of one flat, with a melodic line of eighth notes. The Muted trumpet staff has a treble clef and a key signature of one flat, with a melodic line of eighth notes and rests. The FX 1 rain staff has a treble clef and a key signature of one flat, with a melodic line of eighth notes and rests.

28

Whistle

Drums

Steel drums

Acoustic bass

Muted trumpet

FX 1 rain

29

Whistle

Drums

Steel drums

Acoustic bass

Muted trumpet

FX 1 rain

30

Drums

Steel drums

Acoustic bass

Muted trumpet

FX 1 rain

3

31

Drums

Steel drums

Acoustic bass

Muted trumpet

FX 1 rain

3

32

Drums

Steel drums

Acoustic bass

Muted trumpet

FX 1 rain

Detailed description: This system contains measures 32 through 35. The Drums part features a complex rhythmic pattern with various note values and rests. The Steel drums part consists of chords and single notes, some with grace notes. The Acoustic bass part has a melodic line with eighth and quarter notes. The Muted trumpet part has a few chords and rests. The FX 1 rain part has a rhythmic pattern of chords and single notes.

33

Drums

Steel drums

Acoustic bass

Muted trumpet

FX 1 rain

Detailed description: This system contains measures 33 through 36. The Drums part continues with its rhythmic pattern. The Steel drums part has chords and single notes. The Acoustic bass part has a melodic line with eighth and quarter notes. The Muted trumpet part has a triplet of chords in measure 35. The FX 1 rain part has a rhythmic pattern of chords and single notes.

34

Drums

Steel drums

Acoustic bass

Muted trumpet

FX 1 rain

Detailed description: This system contains measures 34 through 37. The Drums part features a consistent pattern of eighth notes with 'x' marks above them, indicating cymbal hits. The Steel drums part consists of chords in the right hand and single notes in the left hand. The Acoustic bass part has a melodic line with a key signature of one flat. The Muted trumpet part plays chords in the right hand and single notes in the left hand, with a long note in measure 35. The FX 1 rain part has chords in the right hand and single notes in the left hand.

35

Drums

Steel drums

Acoustic bass

Muted trumpet

FX 1 rain

Detailed description: This system contains measures 35 through 38. The Drums part continues with the same eighth-note pattern. The Steel drums part has chords in the right hand and single notes in the left hand. The Acoustic bass part has a melodic line with a key signature of one flat. The Muted trumpet part has chords in the right hand and single notes in the left hand. The FX 1 rain part has chords in the right hand and single notes in the left hand.

36

Drums

Steel drums

Acoustic bass

Muted trumpet

FX 1 rain

37

Drums

Steel drums

Acoustic bass

FX 1 rain

38

Drums

Steel drums

Acoustic bass

FX 1 rain

Detailed description: This system contains measures 38 through 41. The Drums part features a consistent pattern of eighth notes with 'x' marks above them, indicating cymbal hits. The Steel drums part consists of chords in the treble clef, with a key signature change to two sharps (F# and C#) in measure 40. The Acoustic bass part is in the bass clef, showing a melodic line with a key signature change to one sharp (F#) in measure 40. The FX 1 rain part uses a treble clef and provides harmonic support with chords.

39

Drums

Steel drums

Acoustic bass

Muted trumpet

FX 1 rain

Detailed description: This system contains measures 39 through 42. The Drums part continues with the eighth-note pattern. The Steel drums part has chords in the treble clef, with a key signature change to one sharp (F#) in measure 39. The Acoustic bass part is in the bass clef, with a key signature change to one flat (Bb) in measure 39. The Muted trumpet part is in the treble clef and has a whole rest in measure 39, followed by notes in measures 40 and 41. The FX 1 rain part is in the treble clef and provides harmonic support with chords.

40

Drums

Steel drums

Acoustic bass

Muted trumpet

FX 1 rain

41

Whistle

Drums

Steel drums

Acoustic bass

Muted trumpet

FX 1 rain

42

Whistle

Drums

Steel drums

Acoustic bass

Muted trumpet

FX 1 rain

Detailed description: This block contains the musical notation for measures 42 and 43. It features six staves: Whistle, Drums, Steel drums, Acoustic bass, Muted trumpet, and FX 1 rain. The Whistle staff has a treble clef and a key signature of one sharp (F#). The Drums staff uses a common time signature and includes various drum symbols like 'x' and 'o'. The Steel drums staff has a treble clef and a key signature of one sharp. The Acoustic bass staff has a bass clef and a key signature of one sharp. The Muted trumpet staff has a treble clef and a key signature of one sharp. The FX 1 rain staff has a treble clef and a key signature of one sharp. The notation includes notes, rests, and dynamic markings.

43

Drums

Steel drums

Acoustic bass

Muted trumpet

FX 1 rain

Detailed description: This block contains the musical notation for measures 43 and 44. It features five staves: Drums, Steel drums, Acoustic bass, Muted trumpet, and FX 1 rain. The Drums staff uses a common time signature and includes various drum symbols. The Steel drums staff has a treble clef and a key signature of one sharp. The Acoustic bass staff has a bass clef and a key signature of one sharp. The Muted trumpet staff has a treble clef and a key signature of one sharp. The FX 1 rain staff has a treble clef and a key signature of one sharp. The notation includes notes, rests, and dynamic markings.

44

Drums

Steel drums

Acoustic bass

Muted trumpet

FX 1 rain

Detailed description: This system of music covers measures 44 and 45. It features five staves. The Drums staff uses a drum set icon and contains rhythmic notation with 'x' marks above notes. The Steel drums staff is in treble clef with a key signature of one flat and contains chords and eighth notes. The Acoustic bass staff is in bass clef with a key signature of one sharp and contains a melodic line. The Muted trumpet staff is in treble clef with a key signature of one flat and contains a melodic line. The FX 1 rain staff is in treble clef with a key signature of one flat and contains chords and eighth notes.

45

Whistle

Drums

Steel drums

Acoustic bass

Muted trumpet

FX 1 rain

Detailed description: This system of music covers measures 45 and 46. It features six staves. The Whistle staff is in treble clef with a key signature of one sharp and contains a melodic line. The Drums staff uses a drum set icon and contains rhythmic notation with 'x' marks above notes. The Steel drums staff is in treble clef with a key signature of one flat and contains chords and eighth notes. The Acoustic bass staff is in bass clef with a key signature of one sharp and contains a melodic line. The Muted trumpet staff is in treble clef with a key signature of one sharp and contains a melodic line. The FX 1 rain staff is in treble clef with a key signature of one flat and contains chords and eighth notes.

46

Whistle

Drums

Steel drums

Acoustic bass

Muted trumpet

FX 1 rain

Detailed description: This block contains the musical notation for measures 46 and 47. The score is arranged in six staves. The Whistle staff (top) has a treble clef and a key signature of one sharp (F#). It features a melodic line with a triplet of eighth notes in measure 47. The Drums staff uses a common time signature and includes a variety of rhythmic patterns, such as eighth and sixteenth notes, and rests. The Steel drums staff has a treble clef and a key signature of one sharp, with a melodic line consisting of eighth and sixteenth notes. The Acoustic bass staff has a bass clef and a key signature of one sharp, with a melodic line of eighth and sixteenth notes. The Muted trumpet staff has a treble clef and a key signature of one sharp, with a melodic line of eighth and sixteenth notes. The FX 1 rain staff has a treble clef and a key signature of one sharp, with a melodic line of eighth and sixteenth notes. The key signature changes to one flat (Bb) at the start of measure 47.

47

Whistle

Drums

Steel drums

Acoustic bass

Muted trumpet

FX 1 rain

Detailed description: This block contains the musical notation for measures 47 and 48. The score is arranged in six staves. The Whistle staff (top) has a treble clef and a key signature of one flat (Bb). It features a melodic line with a triplet of eighth notes in measure 47. The Drums staff uses a common time signature and includes a variety of rhythmic patterns, such as eighth and sixteenth notes, and rests. The Steel drums staff has a treble clef and a key signature of one flat, with a melodic line consisting of eighth and sixteenth notes. The Acoustic bass staff has a bass clef and a key signature of one flat, with a melodic line of eighth and sixteenth notes. The Muted trumpet staff has a treble clef and a key signature of one flat, with a melodic line of eighth and sixteenth notes. The FX 1 rain staff has a treble clef and a key signature of one flat, with a melodic line of eighth and sixteenth notes. The key signature changes to one flat at the start of measure 47.

48

Whistle
Drums
Steel drums
Acoustic bass
Muted trumpet
FX 1 rain

Detailed description: This system of music covers measures 48 to 53. The Whistle part starts with a whole rest in measure 48, followed by a melodic line in measures 49-53. The Drums part features a consistent rhythmic pattern of eighth notes with 'x' marks above them, indicating a specific drum sound. The Steel drums part consists of chords with a rhythmic pattern of eighth notes. The Acoustic bass part has a melodic line with a steady eighth-note pulse. The Muted trumpet part plays sustained chords in measures 48-50 and then changes to a different chord in measures 51-53. The FX 1 rain part provides a rhythmic accompaniment with chords and eighth notes.

49

Whistle
Drums
Steel drums
Acoustic bass
Muted trumpet
FX 1 rain

Detailed description: This system of music covers measures 49 to 54. The Whistle part begins with a melodic phrase in measure 49, followed by a long note in measure 50, and then rests in measures 51-54. The Drums part continues with the same rhythmic pattern as in the previous system. The Steel drums part maintains its chordal accompaniment. The Acoustic bass part continues its melodic line. The Muted trumpet part has a whole rest in measure 49, followed by a triplet of chords in measures 51-53. The FX 1 rain part continues with its rhythmic accompaniment.

50

Drums

Steel drums

Acoustic bass

Muted trumpet

FX 1 rain

This system contains measures 50 and 51. The Drums part features a complex rhythmic pattern with various note values and rests. The Steel drums part consists of chords and single notes, with a key signature change to one flat. The Acoustic bass part has a melodic line with a triplet of eighth notes in measure 51. The Muted trumpet part plays chords, with a triplet of eighth notes in measure 51. The FX 1 rain part provides a rhythmic accompaniment with chords and rests.

51

Drums

Steel drums

Acoustic bass

Muted trumpet

FX 1 rain

This system contains measures 51 and 52. The Drums part continues with its rhythmic pattern. The Steel drums part has chords and single notes. The Acoustic bass part has a melodic line with a triplet of eighth notes in measure 52. The Muted trumpet part plays chords, with a triplet of eighth notes in measure 52. The FX 1 rain part provides a rhythmic accompaniment with chords and rests.

52

Drums

Steel drums

Acoustic bass

Muted trumpet

FX 1 rain

Detailed description: This system contains measures 52, 53, and 54. The Drums part features a complex rhythmic pattern with various note values and rests. The Steel drums part consists of chords and single notes, some with grace notes. The Acoustic bass part has a melodic line with eighth and quarter notes. The Muted trumpet part has a few chords and rests. The FX 1 rain part has a rhythmic pattern of chords and single notes.

53

Drums

Steel drums

Acoustic bass

Muted trumpet

FX 1 rain

Detailed description: This system contains measures 53, 54, and 55. The Drums part continues with its rhythmic pattern. The Steel drums part has chords and single notes. The Acoustic bass part has a melodic line with eighth and quarter notes. The Muted trumpet part has a triplet of chords in measure 54. The FX 1 rain part has a rhythmic pattern of chords and single notes.

54

Drums

Steel drums

Acoustic bass

Muted trumpet

FX 1 rain

Detailed description: This system contains measures 54 through 57. The Drums part features a consistent rhythmic pattern of eighth notes with 'x' marks above them, indicating cymbal hits. The Steel drums part consists of chords with a rhythmic pattern of eighth notes and rests. The Acoustic bass part has a melodic line with eighth notes and rests. The Muted trumpet part plays chords, with a long note in measure 55. The FX 1 rain part has a rhythmic pattern of eighth notes and rests.

55

Drums

Steel drums

Acoustic bass

Muted trumpet

FX 1 rain

Detailed description: This system contains measures 55 through 58. The Drums part continues with the same rhythmic pattern as in the previous system. The Steel drums part has a more complex rhythmic pattern with eighth notes and rests. The Acoustic bass part has a melodic line with eighth notes and rests. The Muted trumpet part has a melodic line with eighth notes and rests. The FX 1 rain part has a rhythmic pattern of eighth notes and rests.

56

Drums

Steel drums

Acoustic bass

Muted trumpet

FX 1 rain

57

Drums

Steel drums

Acoustic bass

FX 1 rain

58

Drums

Steel drums

Acoustic bass

FX 1 rain

59

Drums

Steel drums

Acoustic bass

FX 1 rain

60

Drums

Steel drums

Acoustic bass

FX 1 rain

61

Drums

Steel drums

Acoustic bass

FX 1 rain

Detailed description: This system of music covers measures 61 through 64. The Drums part features a consistent rhythmic pattern of eighth notes with 'x' marks above them, indicating a specific drum sound. The Steel drums part consists of chords and single notes, with a key signature change to one sharp (F#) in measure 63. The Acoustic bass part provides a steady accompaniment with eighth notes and rests. The FX 1 rain part uses chords and single notes, mirroring the harmonic structure of the steel drums.

62

Drums

Steel drums

Acoustic bass

FX 1 rain

Detailed description: This system of music covers measures 65 through 68. The Drums part continues with the same eighth-note pattern. The Steel drums part features a more active melodic line with eighth notes and chords. The Acoustic bass part has a more prominent role, playing a sequence of eighth notes with a rising and then falling melodic contour. The FX 1 rain part continues with chords and single notes, supporting the overall harmonic progression.

63

Drums

Steel drums

Acoustic bass

Muted trumpet

FX 1 rain

Detailed description: This system contains measures 63 through 67. The Drums part features a consistent pattern of eighth notes with 'x' marks above them, indicating cymbal hits. The Steel drums part consists of chords in the treble clef, with some notes marked with 'x' for mutes. The Acoustic bass part is in the bass clef, playing a melodic line with eighth notes and rests. The Muted trumpet part shows a few chords in the treble clef. The FX 1 rain part uses a treble clef and features a series of chords with a rain-like texture, indicated by the 'FX 1 rain' label.

64

Drums

Steel drums

Acoustic bass

Muted trumpet

FX 1 rain

Detailed description: This system contains measures 68 through 72. The Drums part continues with the eighth-note pattern and cymbal hits. The Steel drums part has chords in the treble clef, with some notes marked with 'x'. The Acoustic bass part continues its melodic line in the bass clef. The Muted trumpet part shows chords in the treble clef. The FX 1 rain part continues with chords in the treble clef, maintaining the rain-like texture.

65

Drums

Steel drums

Acoustic bass

Muted trumpet

FX 1 rain

66

Drums

Steel drums

Acoustic bass

Muted trumpet

FX 1 rain

67

Drums

Steel drums

Acoustic bass

Muted trumpet

FX 1 rain

Detailed description: This system contains five staves for measures 67-71. The Drums staff shows a complex rhythmic pattern with various note values and rests. The Steel drums staff features a melodic line with a key signature change to two sharps (F# and C#) in measure 70. The Acoustic bass staff provides a steady bass line with eighth and quarter notes. The Muted trumpet staff has a triplet of eighth notes in measure 70. The FX 1 rain staff consists of a series of chords and rests.

68

Drums

Steel drums

Acoustic bass

Muted trumpet

FX 1 rain

Detailed description: This system contains five staves for measures 68-72. The Drums staff continues the rhythmic pattern from the previous system. The Steel drums staff continues its melodic line. The Acoustic bass staff continues its bass line. The Muted trumpet staff has a triplet of eighth notes in measure 68. The FX 1 rain staff continues with chords and rests.

69

Drums

Steel drums

Acoustic bass

Muted trumpet

FX 1 rain

70

Drums

Steel drums

Acoustic bass

Muted trumpet

FX 1 rain

71

Drums

Steel drums

Acoustic bass

Muted trumpet

FX 1 rain

72

Drums

Steel drums

Acoustic bass

Muted trumpet

FX 1 rain

73

Drums

Steel drums

Acoustic bass

FX 1 rain

74

Drums

Steel drums

Acoustic bass

FX 1 rain

75

Drums

Steel drums

Acoustic bass

FX 1 rain

76

Drums

Steel drums

Acoustic bass

FX 1 rain

This system covers measures 76 and 77. The Drums staff features a complex rhythmic pattern with various drum sounds indicated by 'x' marks and note heads. The Steel drums staff uses a treble clef and contains several chords and melodic lines. The Acoustic bass staff uses a bass clef and shows a steady bass line. The FX 1 rain staff uses a treble clef and contains a sequence of chords and notes.

77

Drums

Steel drums

Acoustic bass

FX 1 rain

This system covers measures 77 and 78. The Drums staff continues the rhythmic pattern from the previous system. The Steel drums staff shows further development of the melodic and harmonic material. The Acoustic bass staff maintains the bass line. The FX 1 rain staff continues its sequence of chords and notes.

78

Drums

Steel drums

Acoustic bass

FX 1 rain

This system covers measures 78 and 79. The Drums staff continues the rhythmic pattern. The Steel drums staff shows further development of the melodic and harmonic material. The Acoustic bass staff maintains the bass line. The FX 1 rain staff continues its sequence of chords and notes.

79

Drums

Steel drums

Acoustic bass

FX 1 rain

The image shows a musical score for four instruments: Drums, Steel drums, Acoustic bass, and FX 1 rain. The score begins at measure 79. The Drums part features a complex rhythmic pattern with various note values and rests. The Steel drums part is written in treble clef with a key signature of two sharps (F# and C#), showing a sequence of chords and single notes. The Acoustic bass part is written in bass clef, featuring a melodic line with eighth and quarter notes, often accompanied by a rhythmic pattern of eighth notes. The FX 1 rain part is written in treble clef and consists of a series of chords and single notes, some with a 'rain' effect indicated by a vertical line.

Drums

Roger Mac2 - Ub 40

♩ = 93,000038

4

6

8

10

12

14

16

18

20

V.S.

Drums

Drum notation for measures 22 through 40. The notation is presented in two systems per measure, with a double bar line between them. The top system uses 'x' marks to indicate hits on a snare drum, while the bottom system uses standard musical notation for a bass drum. Measure 26 features a triplet of snare hits in both systems, indicated by a bracket and the number '3'. Measures 28, 30, 32, 36, 38, and 40 include a hi-hat symbol (a small triangle) at the beginning of the top system. The notation is consistent throughout, showing a steady rhythmic pattern.

Drums

42

44

46

48

50

52

54

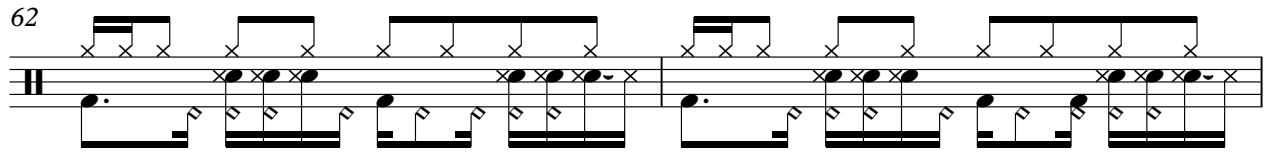
56

58

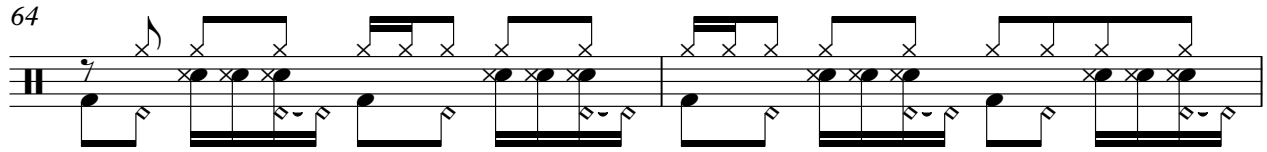
60

V.S.

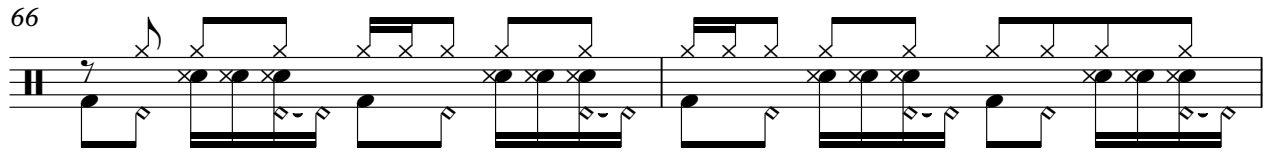
62



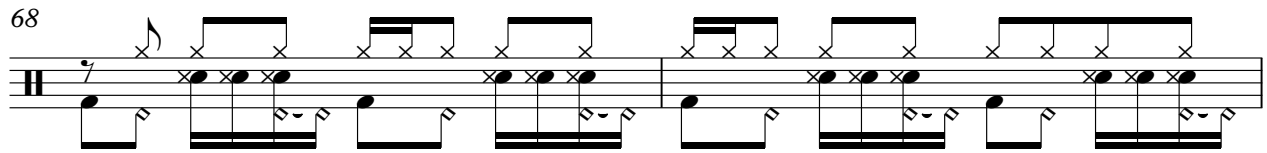
64



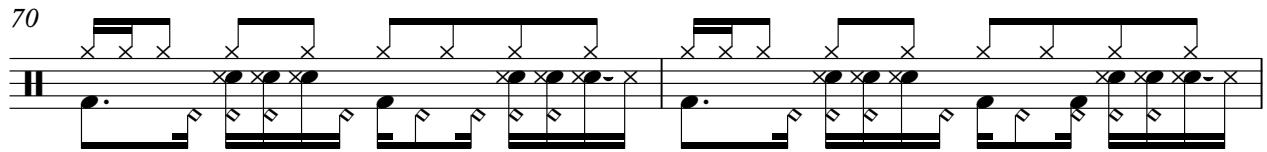
66



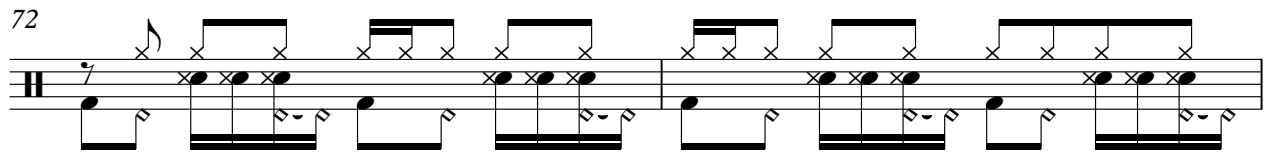
68



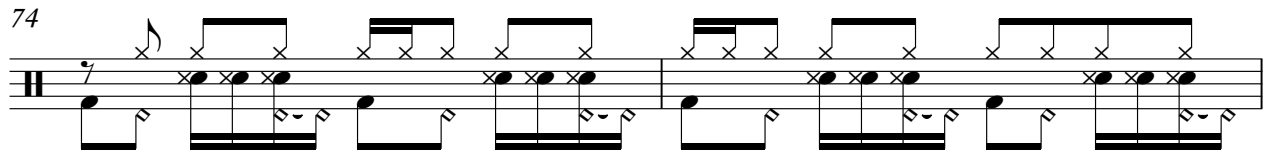
70



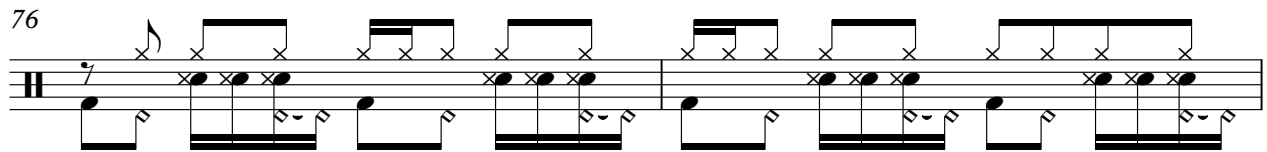
72



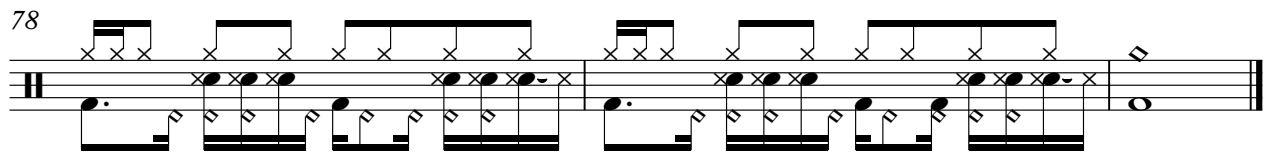
74



76



78



Roger Mac2 - Ub 40

Steel drums

♩ = 93,000038

4

7

10

13

16

19

22

25

28

V.S.



Steel drums

61



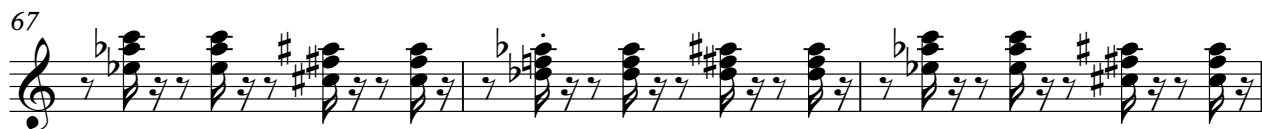
Musical staff for measure 61, featuring a treble clef, a key signature of one flat (B-flat), and a 3/4 time signature. The staff contains a sequence of chords and eighth notes. The chords are primarily triads and dyads, with some including a dotted quarter note. The notes are mostly eighth notes, with some quarter notes. The key signature has one flat (B-flat). The staff contains a sequence of chords and eighth notes.

64



Musical staff for measure 64, featuring a treble clef, a key signature of one flat (B-flat), and a 3/4 time signature. The staff contains a sequence of chords and eighth notes. The chords are primarily triads and dyads, with some including a dotted quarter note. The notes are mostly eighth notes, with some quarter notes. The key signature has one flat (B-flat). The staff contains a sequence of chords and eighth notes.

67



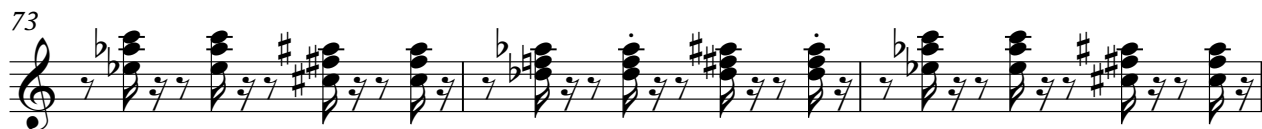
Musical staff for measure 67, featuring a treble clef, a key signature of one flat (B-flat), and a 3/4 time signature. The staff contains a sequence of chords and eighth notes. The chords are primarily triads and dyads, with some including a dotted quarter note. The notes are mostly eighth notes, with some quarter notes. The key signature has one flat (B-flat). The staff contains a sequence of chords and eighth notes.

70



Musical staff for measure 70, featuring a treble clef, a key signature of one flat (B-flat), and a 3/4 time signature. The staff contains a sequence of chords and eighth notes. The chords are primarily triads and dyads, with some including a dotted quarter note. The notes are mostly eighth notes, with some quarter notes. The key signature has one flat (B-flat). The staff contains a sequence of chords and eighth notes.

73



Musical staff for measure 73, featuring a treble clef, a key signature of one flat (B-flat), and a 3/4 time signature. The staff contains a sequence of chords and eighth notes. The chords are primarily triads and dyads, with some including a dotted quarter note. The notes are mostly eighth notes, with some quarter notes. The key signature has one flat (B-flat). The staff contains a sequence of chords and eighth notes.

76



Musical staff for measure 76, featuring a treble clef, a key signature of one flat (B-flat), and a 3/4 time signature. The staff contains a sequence of chords and eighth notes. The chords are primarily triads and dyads, with some including a dotted quarter note. The notes are mostly eighth notes, with some quarter notes. The key signature has one flat (B-flat). The staff contains a sequence of chords and eighth notes.

78



Musical staff for measure 78, featuring a treble clef, a key signature of one flat (B-flat), and a 3/4 time signature. The staff contains a sequence of chords and eighth notes. The chords are primarily triads and dyads, with some including a dotted quarter note. The notes are mostly eighth notes, with some quarter notes. The key signature has one flat (B-flat). The staff contains a sequence of chords and eighth notes.

Roger Mac2 - Ub 40

Acoustic bass

♩ = 93,000038



V.S.

Acoustic bass

32

35

38

41

44

47

50

53

56

59

62



65



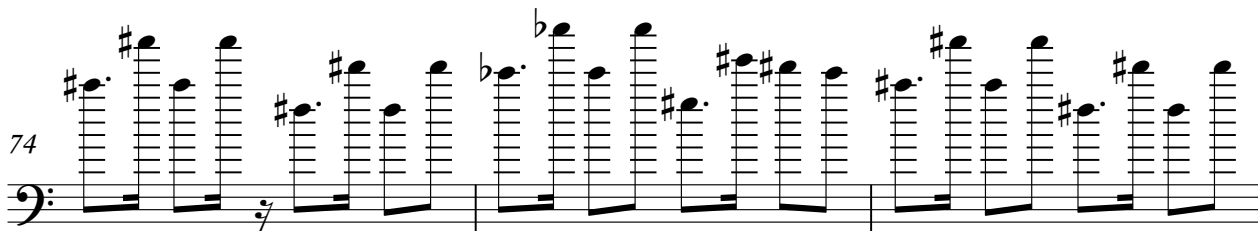
68



71



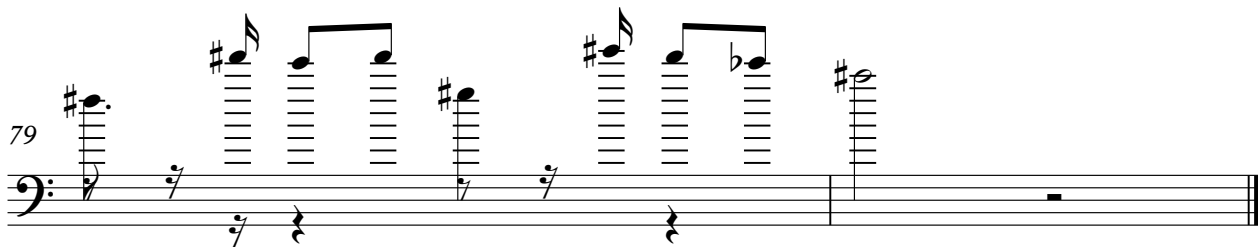
74



77



79



Muted trumpet

Roger Mac2 - Ub 40

♩ = 93,000038



Muted trumpet

39



44



49



54



63



68



71



Roger Mac2 - Ub 40

FX 1 rain

♩ = 93,000038

4

6

8

10

12

14

16

18

20

V.S.

46



48



50



52



54



56



58



60



62



64



V.S.

66

Musical staff for measure 66, featuring a treble clef, a key signature of one flat (B-flat), and a 2/4 time signature. The staff contains a sequence of chords and eighth notes: B-flat major (B-flat, D-flat, F), G major (G, B, D), A major (A, C#, E), and B-flat major (B-flat, D-flat, F). The notes are beamed together in pairs, with a quarter rest following each pair.

68

Musical staff for measure 68, identical to measure 66. It features a treble clef, a key signature of one flat (B-flat), and a 2/4 time signature. The staff contains a sequence of chords and eighth notes: B-flat major (B-flat, D-flat, F), G major (G, B, D), A major (A, C#, E), and B-flat major (B-flat, D-flat, F). The notes are beamed together in pairs, with a quarter rest following each pair.

70

Musical staff for measure 70, featuring a treble clef, a key signature of one flat (B-flat), and a 2/4 time signature. The staff contains a sequence of chords and eighth notes: B-flat major (B-flat, D-flat, F), G major (G, B, D), A major (A, C#, E), and B-flat major (B-flat, D-flat, F). The notes are beamed together in pairs, with a quarter rest following each pair.

72

Musical staff for measure 72, featuring a treble clef, a key signature of one flat (B-flat), and a 2/4 time signature. The staff contains a sequence of chords and eighth notes: B-flat major (B-flat, D-flat, F), G major (G, B, D), A major (A, C#, E), and B-flat major (B-flat, D-flat, F). The notes are beamed together in pairs, with a quarter rest following each pair.

74

Musical staff for measure 74, featuring a treble clef, a key signature of one flat (B-flat), and a 2/4 time signature. The staff contains a sequence of chords and eighth notes: B-flat major (B-flat, D-flat, F), G major (G, B, D), A major (A, C#, E), and B-flat major (B-flat, D-flat, F). The notes are beamed together in pairs, with a quarter rest following each pair.

76

Musical staff for measure 76, featuring a treble clef, a key signature of one flat (B-flat), and a 2/4 time signature. The staff contains a sequence of chords and eighth notes: B-flat major (B-flat, D-flat, F), G major (G, B, D), A major (A, C#, E), and B-flat major (B-flat, D-flat, F). The notes are beamed together in pairs, with a quarter rest following each pair.

78

Musical staff for measure 78, featuring a treble clef, a key signature of one flat (B-flat), and a 2/4 time signature. The staff contains a sequence of chords and eighth notes: B-flat major (B-flat, D-flat, F), G major (G, B, D), A major (A, C#, E), and B-flat major (B-flat, D-flat, F). The notes are beamed together in pairs, with a quarter rest following each pair. The staff concludes with a double bar line.