

Rumba Tres - BUBA

♩ = 128,000000

#A.BASS 1

DRUMS

#SYNBASS 1

#STR SECT2

#TROMBONE

♩ = 128,000000

3

#A.BASS 1

DRUMS

#SYNBASS 1

#STR SECT2

4

#A.BASS 1

DRUMS

#SYNBASS 1

#STR SECT2

5

#A.BASS 1

DRUMS

6

#A.BASS 1

DRUMS

#SYNBASS 1

#STR SECT2

#TROMBONE

7

#A.BASS 1

DRUMS

#SYNBASS 1

#STR SECT2

#TROMBONE

3 3 3 3

8

#A.BASS 1

DRUMS

#SYNBASS 1

#STR SECT2

#TROMBONE

3

9

#A.BASS 1

DRUMS

#SYNBASS 1

#STR SECT2

#TROMBONE

3

3

10

#A.BASS 1

DRUMS

#SYNBASS 1

#STR SECT2

#TROMBONE

3

3

3

3

3

3

11

#A.BASS 1

DRUMS

#SYNBASS 1

#STR SECT2

#TROMBONE

12

#A.BASS 1

DRUMS

#SYNBASS 1

#STR SECT2

#TROMBONE

13

#A.BASS 1

DRUMS

#SYNBASS 1

#STR SECT2

#TROMBONE

Detailed description: This block contains the musical notation for measures 13 and 14. It features five staves: #A.BASS 1 (treble clef), DRUMS (drum set notation), #SYNBASS 1 (treble clef), #STR SECT2 (treble clef), and #TROMBONE (treble clef). Measure 13 shows a complex rhythmic pattern with a triplet in the Trombone part. Measure 14 continues the pattern with a triplet in the Synbass part.

14

#A.BASS 1

DRUMS

#SYNBASS 1

#STR SECT2

#TROMBONE

Detailed description: This block contains the musical notation for measures 14 and 15. It features five staves: #A.BASS 1 (treble clef), DRUMS (drum set notation), #SYNBASS 1 (treble clef), #STR SECT2 (treble clef), and #TROMBONE (treble clef). Measure 14 shows a complex rhythmic pattern with a triplet in the Synbass part. Measure 15 continues the pattern with a triplet in the Synbass part.

15

#A.BASS 1

DRUMS

#SYNBASS 1

#STR SECT2

#TROMBONE

This system contains measures 15 and 16. The #A.BASS 1 staff features a melodic line with eighth notes and rests. The DRUMS staff shows a complex rhythmic pattern with various drum symbols. The #SYNBASS 1 staff has a simple eighth-note bass line. The #STR SECT2 staff plays chords in the lower register. The #TROMBONE staff is mostly silent, with a few notes in measure 16.

16

#A.BASS 1

DRUMS

#SYNBASS 1

#STR SECT2

#TROMBONE

This system continues measures 15 and 16. The #A.BASS 1 staff continues its melodic line. The DRUMS staff maintains its rhythmic pattern. The #SYNBASS 1 staff has a more active bass line with chords. The #STR SECT2 staff continues with chords. The #TROMBONE staff now has a more active line with eighth notes and rests.

17

#A.BASS 1

DRUMS

#SYNBASS 1

#STR SECT2

#TROMBONE

Detailed description: This system contains five staves for measures 17 and 18. The top staff, #A.BASS 1, features a melodic line with eighth and quarter notes. The DRUMS staff shows a complex rhythmic pattern with various note values and rests. #SYNBASS 1 has a bass line with chords and single notes. #STR SECT2 consists of chordal accompaniment. #TROMBONE has a sparse melodic line with some rests.

18

#A.BASS 1

DRUMS

#SYNBASS 1

#STR SECT2

#TROMBONE

Detailed description: This system contains five staves for measures 18 and 19. The top staff, #A.BASS 1, continues the melodic line. The DRUMS staff maintains the rhythmic pattern. #SYNBASS 1 features a prominent triplet of chords in measure 18, indicated by a large oval and the number '3'. #STR SECT2 has a melodic line with triplets in measure 18, also marked with '3'. #TROMBONE has a triplet of notes in measure 18, marked with '3'.

19

#A.BASS 1

DRUMS

#SYNBASS 1

#STR SECT2

#TROMBONE

Detailed description: This block contains the musical notation for measures 19 and 20. It features five staves: #A.BASS 1 (treble clef), DRUMS (drum set notation), #SYNBASS 1 (treble clef), #STR SECT2 (treble clef), and #TROMBONE (treble clef). The music is in a 4/4 time signature with a key signature of one flat. Measure 19 shows the bass line with eighth notes and a triplet of eighth notes. The drums play a consistent pattern of eighth notes. The synth bass and string section provide harmonic support with chords and single notes. The trombone part is mostly silent in measure 19.

20

#A.BASS 1

DRUMS

#SYNBASS 1

#STR SECT2

#TROMBONE

Detailed description: This block contains the musical notation for measures 21 and 22. It features the same five staves as the previous block. Measure 21 continues the bass line with eighth notes and a triplet of eighth notes. The drums maintain their pattern. The synth bass and string section continue their parts. The trombone part begins in measure 21 with a series of eighth notes and a dotted quarter note. In measure 22, the trombone part features a long, sustained note with a slur and a fermata.

21

#A.BASS 1

DRUMS

#SYNBASS 1

#STR SECT2

#TROMBONE

22

#A.BASS 1

DRUMS

#SYNBASS 1

#STR SECT2

#TROMBONE

23

#A.BASS 1

DRUMS

#SYNBASS 1

#STR SECT2

#TROMBONE

24

#A.BASS 1

DRUMS

#SYNBASS 1

#STR SECT2

#TROMBONE

25

#A.BASS 1

DRUMS

#SYNBASS 1

#STR SECT2

#TROMBONE

26

#A.BASS 1

DRUMS

#SYNBASS 1

#STR SECT2

#TROMBONE

27

#A.BASS 1

DRUMS

#SYNBASS 1

#STR SECT2

#TROMBONE

Detailed description: This system of musical notation covers measures 27 through 31. The #A.BASS 1 part is in treble clef, playing a rhythmic pattern of eighth notes with rests. The DRUMS part is in a drum set notation, showing a consistent pattern of snare and bass drum hits. The #SYNBASS 1 part is in treble clef, playing a melodic line with a key signature change to one flat (B-flat) in measure 29. The #STR SECT2 part is in treble clef, playing a sustained chord with a fermata. The #TROMBONE part is in treble clef, playing a melodic line with a key signature change to one flat in measure 29.

28

#A.BASS 1

DRUMS

#SYNBASS 1

#STR SECT2

#TROMBONE

Detailed description: This system of musical notation covers measures 32 through 36. The #A.BASS 1 part continues its rhythmic pattern. The DRUMS part maintains the same pattern. The #SYNBASS 1 part continues its melodic line with a key signature change to two flats (B-flat and E-flat) in measure 34. The #STR SECT2 part continues its sustained chord with a fermata. The #TROMBONE part continues its melodic line with a key signature change to two flats in measure 34.

29

#A.BASS 1

DRUMS

#SYNBASS 1

#STR SECT2

#TROMBONE

30

#A.BASS 1

DRUMS

#SYNBASS 1

#STR SECT2

#TROMBONE

31

#A.BASS 1

DRUMS

#SYNBASS 1

#STR SECT2

32

#A.BASS 1

DRUMS

#SYNBASS 1

#STR SECT2

#TROMBONE

33

#A.BASS 1

DRUMS

#SYNBASS 1

#STR SECT2

#TROMBONE

34

#A.BASS 1

DRUMS

#SYNBASS 1

#STR SECT2

#TROMBONE

35

#A.BASS 1

DRUMS

#SYNBASS 1

#STR SECT2

#TROMBONE

36

#A.BASS 1

DRUMS

#SYNBASS 1

#STR SECT2

#TROMBONE

37

#A.BASS 1

DRUMS

#SYNBASS 1

#STR SECT2

#TROMBONE

Detailed description: This block contains the musical notation for measures 37 through 40. It features five staves: #A.BASS 1 (treble clef), DRUMS (drum set notation), #SYNBASS 1 (treble clef), #STR SECT2 (treble clef), and #TROMBONE (treble clef). The bass parts include triplet markings. The drum part shows a complex rhythmic pattern with various drum sounds. The string section and trombone parts provide harmonic support with sustained notes and chords.

38

#A.BASS 1

DRUMS

#SYNBASS 1

#STR SECT2

#TROMBONE

Detailed description: This block contains the musical notation for measures 38 through 41. It features five staves: #A.BASS 1 (treble clef), DRUMS (drum set notation), #SYNBASS 1 (treble clef), #STR SECT2 (treble clef), and #TROMBONE (treble clef). The bass parts continue with triplet markings. The drum part maintains a consistent rhythmic pattern. The string section and trombone parts play sustained chords and melodic lines, with the trombone part ending in a triplet.

39

#A.BASS 1

DRUMS

#SYNBASS 1

#STR SECT2

40

#A.BASS 1

DRUMS

#SYNBASS 1

#STR SECT2

#TROMBONE

41

#A.BASS 1

DRUMS

#SYNBASS 1

#STR SECT2

#TROMBONE

42

#A.BASS 1

DRUMS

#SYNBASS 1

#STR SECT2

#TROMBONE

43

#A.BASS 1

DRUMS

#SYNBASS 1

#STR SECT2

#TROMBONE

44

#A.BASS 1

DRUMS

#SYNBASS 1

#STR SECT2

#TROMBONE

45

#A.BASS 1

DRUMS

#SYNBASS 1

#STR SECT2

#TROMBONE

46

#A.BASS 1

DRUMS

#SYNBASS 1

#STR SECT2

#TROMBONE

47

#A.BASS 1

DRUMS

#SYNBASS 1

#STR SECT2

48

#A.BASS 1

DRUMS

#SYNBASS 1

#STR SECT2

#TROMBONE

49

#A.BASS 1

DRUMS

#SYNBASS 1

#STR SECT2

#TROMBONE

50

#A.BASS 1

DRUMS

#SYNBASS 1

#STR SECT2

#TROMBONE

51

#A.BASS 1

DRUMS

#SYNBASS 1

#STR SECT2

#TROMBONE

52

#A.BASS 1

DRUMS

#SYNBASS 1

#STR SECT2

#TROMBONE

53

#A.BASS 1

DRUMS

#SYNBASS 1

#STR SECT2

#TROMBONE

54

#A.BASS 1

DRUMS

#SYNBASS 1

#STR SECT2

#TROMBONE

55

#A.BASS 1

DRUMS

#SYNBASS 1

#STR SECT2

56

DRUMS

#SYNBASS 1

57

#A.BASS 1

DRUMS

#SYNBASS 1

#STR SECT2

#TROMBONE

#A.BASS 1

Rumba Tres - BUBA

♩ = 128,000000

6

10

13

16

19

22

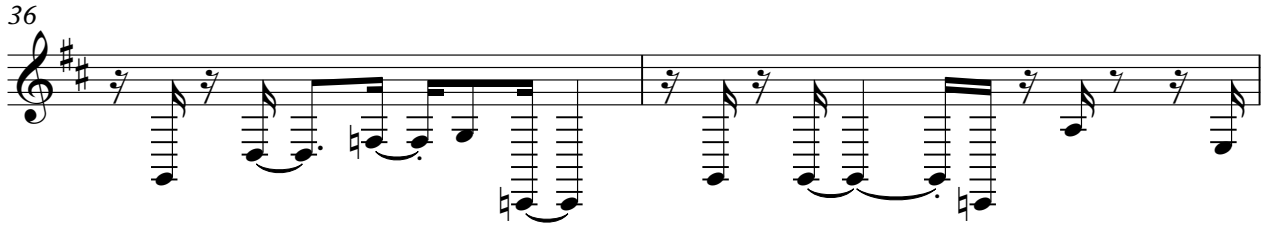
26

30

34

V.S.

36



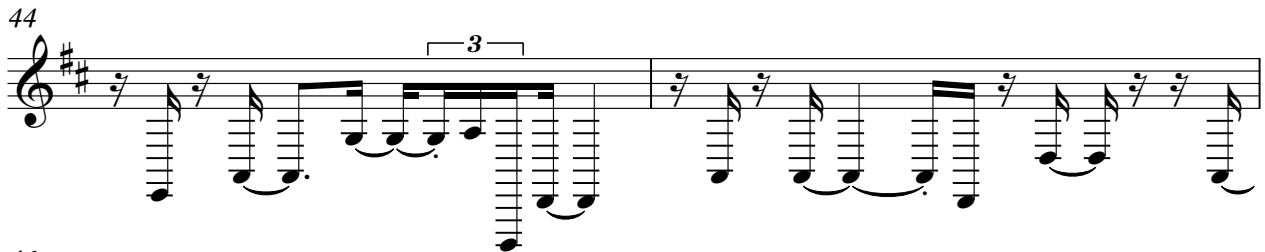
38



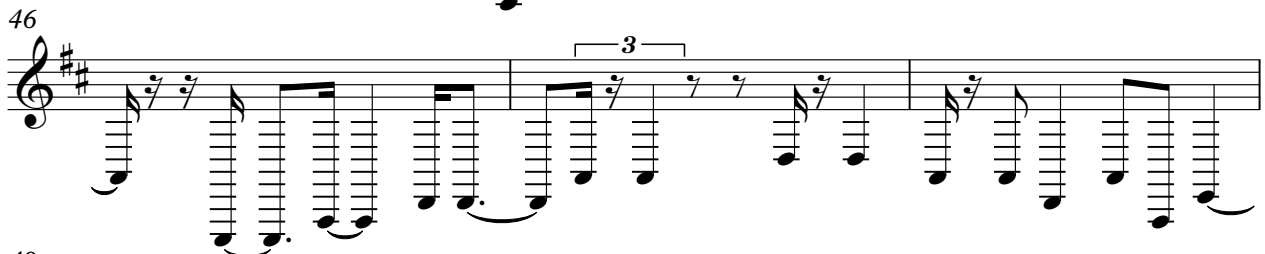
41



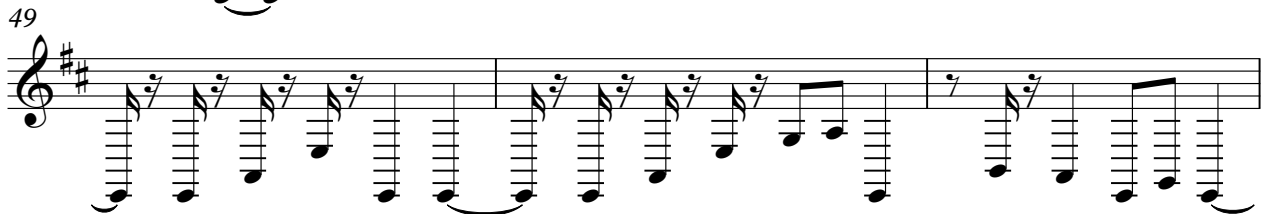
44



46



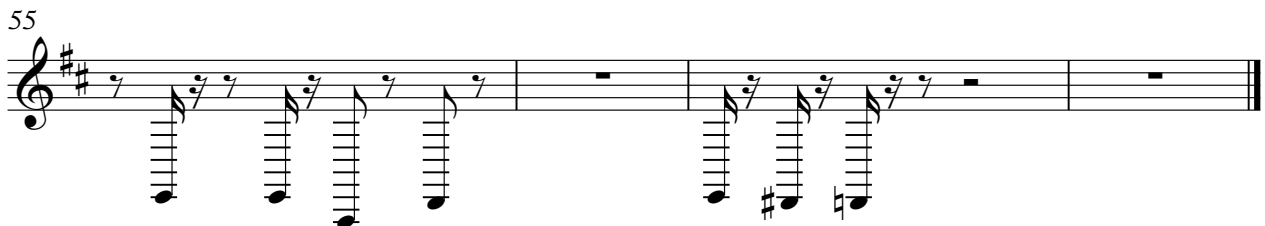
49



52



55



Rumba Tres - BUBA

DRUMS

♩ = 128,000000

4

6

8

10

12

14

15

17

19

V.S.

DRUMS

21

Musical notation for drum part 21, featuring a snare drum line with eighth notes and triplet markings.

22

Musical notation for drum part 22, featuring a snare drum line with eighth notes and triplet markings.

23

Musical notation for drum part 23, featuring a snare drum line with eighth notes, triplet markings, and a sixteenth-note triplet.

24

Musical notation for drum part 24, featuring a snare drum line with eighth notes and triplet markings.

25

Musical notation for drum part 25, featuring a snare drum line with eighth notes and triplet markings.

26

Musical notation for drum part 26, featuring a snare drum line with eighth notes and triplet markings.

28

Musical notation for drum part 28, featuring a snare drum line with eighth notes and triplet markings.

30

Musical notation for drum part 30, featuring a snare drum line with eighth notes, triplet markings, and a sixteenth-note triplet.

32

Musical notation for drum part 32, featuring a snare drum line with eighth notes, triplet markings, and a sixteenth-note triplet.

33

Musical notation for drum part 33, featuring a snare drum line with eighth notes, triplet markings, and a sixteenth-note triplet.

DRUMS

34

35

36

37

38

39

40

41

43

44

V.S.

DRUMS

45

46

47

48

49

50

52

54

56

#SYNBASS 1

Rumba Tres - BUBA

♩ = 128,000000

4

8

10

12

14

16

18

20

23

V.S.

#SYNBASS 1

Musical score for #SYNBASS 1, measures 25-47. The score is written in treble clef with a key signature of one flat (B-flat). It features a complex bass line with many triplets and slurs. Measure numbers 25, 28, 31, 33, 35, 37, 39, 41, 44, and 47 are indicated at the start of their respective staves. The notation includes various rhythmic values, accidentals, and articulation marks.

#SYNBASS 1

49

52

54

56

♩ = 128,000000

6

9

11

13

15

18

20

22

27

V.S.

32



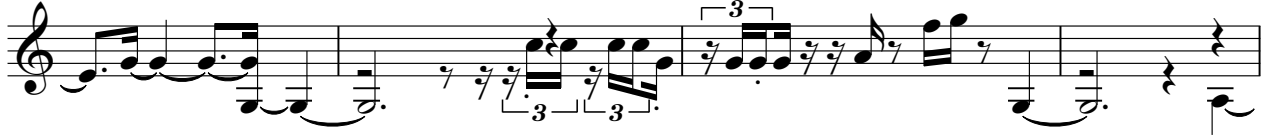
36



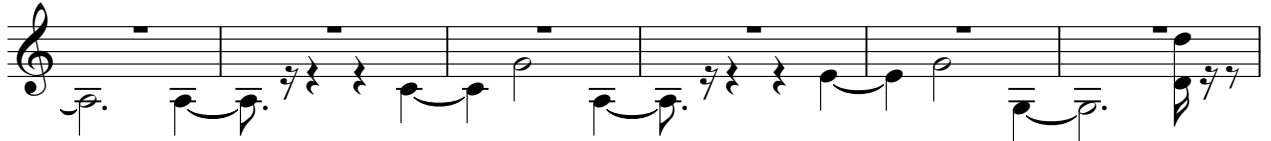
40



44



48



54



#TROMBONE

Rumba Tres - BUBA

♩ = 128,000000

4

8

11

13

17

21

25

28

30

2

#TROMBONE

32

36

39

44

48

52