

Rush - Best I Can

♩ = 150,000000

Drums

Guitar

Guitar Bass

Bass

Vocals

♩ = 150,000000

4

Drums

Guitar Bass

Bass

Vocals

7

Drums

Guitar Bass

Bass

Vocals

Detailed description: This system contains measures 7, 8, and 9. The drum part features a consistent pattern of eighth notes on the snare and bass drum. The guitar bass part consists of chords and single notes in the treble clef. The bass part is written in the bass clef with eighth and quarter notes. The vocal line begins in measure 7 with a melodic phrase and has a rest in measure 8.

10

Drums

Guitar

Guitar Bass

Bass

Vocals

Detailed description: This system contains measures 10, 11, and 12. The drum part continues with the same eighth-note pattern. The guitar part is silent, indicated by a whole rest. The guitar bass part continues with chords and single notes. The bass part continues with its melodic line. The vocal line continues with a melodic phrase across all three measures.

13

Drums

Guitar

Guitar Bass

Bass

Vocals

Detailed description: This system contains measures 13, 14, and 15. The drum part features a consistent pattern of eighth notes on the snare and bass drum. The guitar part is mostly silent, with a few notes in measure 15. The guitar bass part plays a melodic line in measure 13 and then provides harmonic support with chords in measures 14 and 15. The bass part has a steady eighth-note line. The vocal part has a melodic line starting in measure 14.

16

Drums

Guitar

Guitar Bass

Bass

Vocals

Detailed description: This system contains measures 16, 17, and 18. The drum part continues with the same eighth-note pattern. The guitar part has some chords and notes in measure 16. The guitar bass part has a melodic line in measure 16 and then provides harmonic support in measures 17 and 18. The bass part has a steady eighth-note line. The vocal part has a melodic line starting in measure 16.

19

Drums

Guitar

Guitar Bass

Bass

Vocals

22

Drums

Guitar

Guitar Bass

Bass

Vocals

25

Drums

Guitar Bass

Bass

Vocals

Detailed description: This block contains the musical notation for measures 25 through 27. It features five staves: Drums, Guitar Bass, Bass, and Vocals. The Drums staff shows a consistent pattern of eighth notes with 'x' marks above them, indicating a specific drum sound. The Guitar Bass staff uses a treble clef and a key signature of two sharps (F# and C#), with chords and single notes. The Bass staff uses a bass clef and the same key signature, featuring a melodic line with eighth and quarter notes. The Vocals staff uses a treble clef and the same key signature, with a vocal line consisting of eighth and quarter notes.

28

Drums

Guitar

Guitar Bass

Bass

Vocals

Detailed description: This block contains the musical notation for measures 28 through 30. It features five staves: Drums, Guitar, Guitar Bass, Bass, and Vocals. The Drums staff continues with the same eighth-note pattern as in the previous block. The Guitar staff is mostly empty, with a few rests. The Guitar Bass staff uses a treble clef and a key signature of two sharps, with chords and single notes. The Bass staff uses a bass clef and the same key signature, with a melodic line. The Vocals staff uses a treble clef and the same key signature, with a vocal line.

31

Drums

Guitar

Guitar Bass

Bass

Vocals

Detailed description: This system of music covers measures 31, 32, and 33. The drums play a consistent pattern of eighth notes on the snare and bass drum. The guitar is silent. The guitar bass and bass lines are active, with the guitar bass playing chords and the bass playing a melodic line. The vocal line begins in measure 31 with a rest, then enters in measure 32 with a series of eighth notes.

34

Drums

Guitar

Guitar Bass

Bass

Vocals

Detailed description: This system of music covers measures 34, 35, and 36. The drums continue their pattern. The guitar remains silent. The guitar bass and bass lines continue their respective parts. The vocal line continues from the previous system, with a rest in measure 34 and then a melodic line in measures 35 and 36.

37

Drums

Guitar Bass

Bass

Vocals

Detailed description: This system contains measures 37, 38, and 39. The drums part features a consistent pattern of eighth notes with 'x' marks above them, indicating a specific drum sound. The guitar bass part consists of chords and single notes in the treble clef. The bass part is written in the bass clef with a mix of eighth and quarter notes. The vocal line is in the treble clef and shows a melodic phrase across the three measures.

40

Drums

Guitar

Guitar Bass

Bass

Vocals

Detailed description: This system contains measures 40, 41, and 42. The drums part continues with the same eighth-note pattern. The guitar part is in the treble clef and shows some rests followed by chords. The guitar bass part is in the treble clef and plays block chords. The bass part continues with a rhythmic pattern of eighth notes. The vocal line is in the treble clef and continues the melodic phrase from the previous system.

43

Drums

Guitar

Guitar Bass

Bass

Vocals

Detailed description: This system of musical notation covers measures 43, 44, and 45. The Drums part features a consistent pattern of eighth notes on the snare and bass drum. The Guitar part has a melodic line with some rests. The Guitar Bass part provides harmonic support with chords and single notes. The Bass part has a steady eighth-note rhythm. The Vocals part begins with a melodic phrase in measure 43 and continues through measure 45.

46

Drums

Guitar

Bass

Vocals

Detailed description: This system of musical notation covers measures 46, 47, and 48. The Drums part continues with the same eighth-note pattern. The Guitar part features a more complex melodic line with some chords and rests. The Bass part continues with a steady eighth-note rhythm. The Vocals part continues with a melodic phrase in measure 46 and ends with a rest in measure 48.

49

Drums

Guitar

Guitar Bass

Bass

Vocals

52

Drums

Guitar Bass

Bass

Vocals

55

Drums

Guitar Bass

Bass

Vocals

56

Drums

Guitar Bass

Bass

Vocals

57

Drums

Guitar Bass

Bass

Vocals

60

Drums

Guitar

Guitar Bass

Bass

Vocals

Detailed description: This system contains measures 60, 61, and 62. The Drums part features a consistent pattern of eighth notes on the snare and bass drum. The Guitar part is silent, indicated by a whole rest. The Guitar Bass part plays a series of chords and single notes, including a prominent F#m chord. The Bass part has a melodic line with eighth and quarter notes. The Vocals part begins with a melodic phrase starting on a dotted half note.

63

Drums

Guitar

Guitar Bass

Bass

Vocals

Detailed description: This system contains measures 63, 64, and 65. The Drums part continues with the same eighth-note pattern. The Guitar part remains silent with whole rests. The Guitar Bass part continues with its chordal accompaniment. The Bass part has a melodic line with eighth and quarter notes. The Vocals part continues with a melodic phrase, including a triplet of eighth notes in measure 65.

66

Drums

Guitar

Guitar Bass

Bass

Vocals

Detailed description: This block contains the musical notation for measures 66, 67, and 68. The score is arranged in five staves. The top staff is for Drums, showing a consistent pattern of eighth notes with 'x' marks above them, indicating a specific drum sound. The second staff is for Guitar, which is mostly silent with a few rests. The third staff is for Guitar Bass, featuring a mix of chords and moving lines. The fourth staff is for Bass, showing a melodic line with various intervals and accidentals. The fifth staff is for Vocals, with a melodic line that includes some rests. The key signature has two sharps (F# and C#).

69

Drums

Guitar Bass

Bass

Vocals

Detailed description: This block contains the musical notation for measures 69, 70, and 71. The score is arranged in four staves. The top staff is for Drums, showing a pattern of eighth notes with 'x' marks. The second staff is for Guitar Bass, with chords and moving lines. The third staff is for Bass, with a melodic line. The fourth staff is for Vocals, with a melodic line. The key signature has two sharps (F# and C#).

72

Drums

Guitar

Guitar Bass

Bass

Vocals

75

Drums

Guitar Bass

Bass

78

Drums

Guitar Bass

Bass

80

Drums

Guitar Bass

Bass

Drums

Rush - Best I Can

♩ = 150,000000

5

9

13

17

21

25

29

33

37

V.S.

41

45

49

53

56

60

64

68

72

76

Drums

79

A musical staff for drums, consisting of a single five-line staff. The notation is as follows:
- Measure 1: A series of eight eighth notes, grouped into two pairs of four. The notes are on the first four lines of the staff (C4, D4, E4, F4).
- Measure 2: A single eighth rest, followed by a quarter rest.
- Measure 3: A series of eight eighth notes, grouped into two pairs of four. The notes are on the first four lines of the staff (C4, D4, E4, F4).
- Measure 4: A single eighth note on the first line (C4), followed by a quarter rest.
- Above the staff, there are two sets of drum symbols: a snare drum (two crossed sticks) above the first measure, and a snare drum (two crossed sticks) above the fourth measure.

Guitar

Rush - Best I Can

♩ = 150,000000

8 5

17

22

4 4 4

36

46

10

60

4 4 4 10

Guitar Bass

Rush - Best I Can

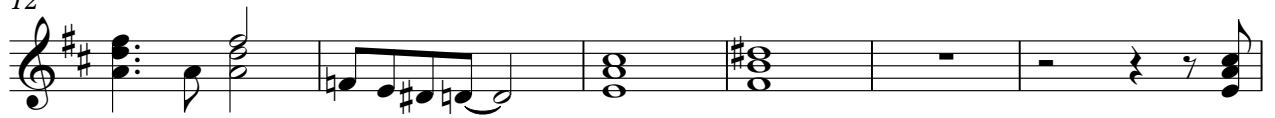
♩ = 150,000000



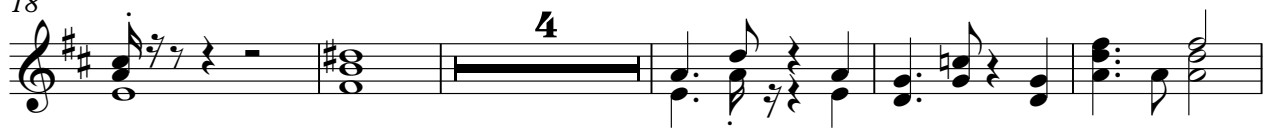
7



12



18



27



32



37



42



50

53

56

60

65

70

75

78

Rush - Best I Can

Bass

♩ = 150,000000



V.S.

43



47



51



55



59



63



67



71



75



78



Rush - Best I Can

Vocals

♩ = 150,000000

3

8

12

17

22

27

32

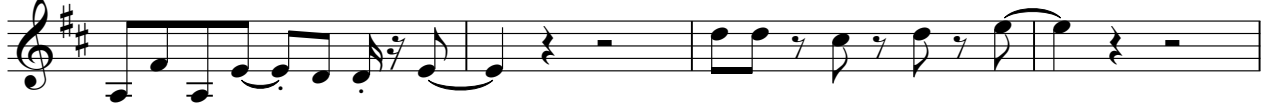
37

42

45

2

50



54



56



59



64



69



73



7