

# Rush - Broom`s Bane 1

♩ = 160,000000

eg1

syn3

♩ = 160,000000

syn3



5

eg1

syn3

syn3



9

eg1

syn3

syn3

14

eg1

eg1

eg1

syn3

syn3

19

eg1

eg1

syn3

23

eg1

syn3

27

eg1

Musical staff for 'eg1' starting at measure 27. It features a treble clef and a key signature of one sharp (F#). The melody consists of eighth and quarter notes with various accidentals.

syn3

Musical staff for 'syn3' starting at measure 27. It features a bass clef and a key signature of one sharp (F#). The accompaniment consists of quarter notes and rests.

syn3

Musical staff for 'syn3' starting at measure 27. It features a bass clef and a key signature of one flat (Bb). The accompaniment consists of quarter notes and rests.



31

eg1

Musical staff for 'eg1' starting at measure 31. It features a treble clef and a key signature of one sharp (F#). The melody continues with eighth and quarter notes.

syn3

Musical staff for 'syn3' starting at measure 31. It features a bass clef and a key signature of one sharp (F#). The accompaniment consists of quarter notes and rests.

syn3

Musical staff for 'syn3' starting at measure 31. It features a bass clef and a key signature of one flat (Bb). The accompaniment consists of quarter notes and rests.



35

eg1

Musical staff for 'eg1' starting at measure 35. It features a treble clef and a key signature of one flat (Bb). The melody continues with eighth and quarter notes.

syn3

Musical staff for 'syn3' starting at measure 35. It features a bass clef and a key signature of one flat (Bb). The accompaniment consists of quarter notes and rests.

syn3

Musical staff for 'syn3' starting at measure 35. It features a bass clef and a key signature of one flat (Bb). The accompaniment consists of quarter notes and rests.

39

eg1

syn3

syn3



43

eg1

syn3

syn3



47

eg1

eg1

syn3

syn3

51

eg1

eg1

eg1

syn3

syn3

Detailed description: This system contains measures 51 through 54. It features five staves. The first two staves are labeled 'eg1' and contain a treble clef staff with a key signature of one sharp (F#) and a bass clef staff with a key signature of one sharp (F#). The third staff is labeled 'eg1' and contains a treble clef staff with a whole rest. The fourth and fifth staves are labeled 'syn3' and contain a bass clef staff with a key signature of one flat (Bb) and a bass clef staff with a key signature of one flat (Bb). The music consists of eighth and sixteenth notes with various accidentals and rests.



55

eg1

eg1

syn3

Detailed description: This system contains measures 55 through 57. It features three staves. The first two staves are labeled 'eg1' and contain a treble clef staff with a key signature of one flat (Bb) and a treble clef staff with a key signature of one flat (Bb). The third staff is labeled 'syn3' and contains a bass clef staff with a key signature of one flat (Bb). The music consists of eighth and sixteenth notes with various accidentals and rests.



58

eg1

syn3

syn3

Detailed description: This system contains measures 58 through 60. It features three staves. The first staff is labeled 'eg1' and contains a treble clef staff with a key signature of one flat (Bb). The second and third staves are labeled 'syn3' and contain a bass clef staff with a key signature of one flat (Bb) and a bass clef staff with a key signature of one flat (Bb). The music consists of eighth and sixteenth notes with various accidentals and rests.

60

eg1

syn3

syn3



62

eg1

syn3

syn3



64

eg1

syn3

syn3

syn3

66

eg1

syn3

syn3



68

eg1

syn3

syn3



70

eg1

syn3

syn3

72

eg1

syn3

syn3



74

eg1

eg1

syn3

syn3





55



59



62



65



68



72



eg1

# Rush - Broom`s Bane 1

♩ = 160,000000

16

22

27

53

57

16

eg1

# Rush - Broom`s Bane 1

♩ = 160,000000

17 34

This system of musical notation is written on a single treble clef staff in 3/4 time. It begins with a tempo marking of a quarter note equal to 160,000,000. The first measure is a whole rest, with the number '17' positioned above it. The second measure contains a quarter rest, followed by a quarter note, and then another quarter rest. The third measure is a whole rest, with the number '34' positioned above it. The system concludes with a double bar line.

53

22

This system of musical notation is written on a single treble clef staff. It begins with the number '53' above the staff. The first measure contains a quarter rest, followed by an eighth rest, then an eighth note, and finally a quarter note. The second measure is a whole rest, with the number '22' positioned above it. The system concludes with a double bar line.

syn3

# Rush - Broom`s Bane 1

♩ = 160,000000

**63** **10**

The musical notation consists of a single bass clef staff in 3/4 time. It begins with a whole rest for 63 measures, followed by a melodic phrase of 10 measures, and ends with another whole rest. The tempo is marked as 160,000000.

# Rush - Broom`s Bane 1

syn3

♩ = 160,000000



12



28



36



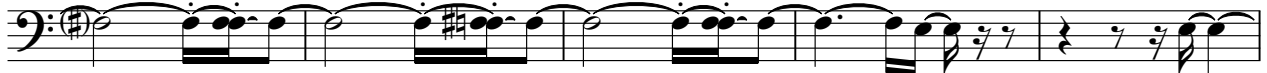
43



50



60



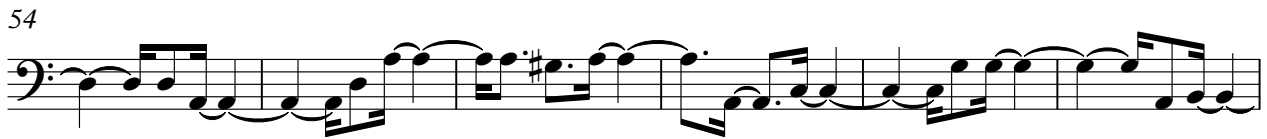
65



70



♩ = 160,000000



V.S.

2

syn3

66



71

