

Rush - LESSONS

♩ = 104,999924

Drums

Guitar

Guitar Bass

Acoustic Guitar

Bass

Vocals

4

Drums

Guitar

Bass

Vocals

7

Drums

Guitar

Bass

Vocals

Detailed description: This system covers measures 7, 8, and 9. The drum part features a consistent pattern of eighth notes on the snare and bass drums. The guitar part consists of a series of chords, primarily triads and dyads, with some eighth-note movement. The bass line provides a steady accompaniment with eighth notes. The vocal line begins in measure 7 with a melodic phrase and includes a double bar line in measure 8.

10

Drums

Guitar

Bass

Vocals

Detailed description: This system covers measures 10, 11, and 12. The instrumental parts continue with the same patterns as in the previous system. The vocal line resumes in measure 10 with a new melodic phrase and includes a double bar line in measure 11.

13

Drums

Guitar

Bass

Vocals

Detailed description: This system covers measures 13, 14, and 15. The instrumental parts remain consistent. The vocal line continues in measure 13 with a melodic phrase and includes a double bar line in measure 14.

16

Drums

Guitar

Bass

Vocals

Detailed description: This system covers measures 16, 17, and 18. The drums play a consistent pattern of eighth notes on the snare and bass drum. The guitar part features a series of chords, primarily triads and dyads, with some chromatic movement. The bass line consists of eighth notes, often beamed in pairs. The vocal line is mostly silent, with a few notes in measure 18.

19

Drums

Guitar

Bass

Vocals

Detailed description: This system covers measures 19 and 20. The drum pattern continues. The guitar part has a more active feel with some sixteenth-note runs and chords. The bass line remains rhythmic with eighth notes. The vocal line becomes more active, featuring a melodic line with eighth notes and a triplet in measure 20.

21

Drums

Guitar Bass

Bass

Vocals

Detailed description: This system covers measures 21 and 22. The drums play a more complex pattern with cymbals and snare. The guitar and bass parts are more intricate, with the guitar playing sixteenth-note chords and the bass playing a walking line. The vocal line has a triplet in measure 22.

23

Drums

Guitar Bass

Bass

Vocals

Detailed description: This system covers measures 23 and 24. The drums play a steady eighth-note pattern in measure 23, followed by a rest and a snare hit in measure 24. The guitar bass and bass lines are in a 4/4 time signature with a key signature of three sharps (F#, C#, G#). The guitar bass line consists of eighth-note chords and single notes, while the bass line features a similar rhythmic pattern with eighth notes and rests. The vocal line is in a treble clef with a key signature of three sharps, showing a melodic line with eighth and quarter notes.

25

Drums

Guitar Bass

Bass

Vocals

Detailed description: This system covers measures 25 and 26. The drums feature a more complex pattern in measure 25, including triplets and snare hits, followed by a rest and a snare hit in measure 26. The guitar bass and bass lines continue with eighth-note patterns and chords. The vocal line shows a melodic progression with eighth and quarter notes.

27

Drums

Guitar Bass

Bass

Vocals

Detailed description: This system covers measures 27 and 28. The drums play a complex pattern in measure 27, including triplets and a sextuplet, followed by a rest and a snare hit in measure 28. The guitar bass and bass lines continue with eighth-note patterns and chords. The vocal line shows a melodic progression with eighth and quarter notes.

29

Drums

Guitar Bass

Bass

Vocals

31

Drums

Guitar Bass

Bass

Vocals

34

Drums

Guitar Bass

Bass

36

Drums

Guitar

Guitar Bass

Bass

Detailed description: This system covers measures 36 and 37. Measure 36 is in 7/8 time, and measure 37 is in 4/4 time. The Drums part features a complex rhythmic pattern with eighth and sixteenth notes. The Guitar part has a treble clef and a key signature of three sharps (F#, C#, G#), with a mix of chords and single notes. The Guitar Bass part has a treble clef and a key signature of three sharps, playing a bass line with eighth notes. The Bass part has a bass clef and a key signature of three sharps, playing a bass line with eighth notes.

38

Drums

Guitar

Bass

Detailed description: This system covers measures 38, 39, and 40. Measure 38 is in 4/4 time, and measures 39 and 40 are in 7/8 time. The Drums part features a complex rhythmic pattern with eighth and sixteenth notes. The Guitar part has a treble clef and a key signature of three sharps, with a mix of chords and single notes. The Bass part has a bass clef and a key signature of three sharps, playing a bass line with eighth notes.

41

Drums

Guitar

Bass

Vocals

Detailed description: This system covers measures 41, 42, and 43. Measure 41 is in 4/4 time, and measures 42 and 43 are in 7/8 time. The Drums part features a complex rhythmic pattern with eighth and sixteenth notes. The Guitar part has a treble clef and a key signature of three sharps, with a mix of chords and single notes. The Bass part has a bass clef and a key signature of three sharps, playing a bass line with eighth notes. The Vocals part has a treble clef and a key signature of three sharps, playing a vocal line with eighth notes.

44

Drums

Guitar

Bass

Vocals

Detailed description: This system covers measures 44, 45, and 46. The drum part features a consistent pattern of eighth notes on the snare and bass drum. The guitar part consists of a series of chords, primarily triads, with some eighth-note accompaniment. The bass line follows a similar rhythmic pattern to the guitar, using eighth notes and quarter notes. The vocal line is sparse, with notes appearing in measures 44 and 46.

47

Drums

Guitar

Bass

Vocals

Detailed description: This system covers measures 47, 48, and 49. The instrumental parts continue with the established patterns from the previous system. The drum part remains steady. The guitar and bass parts provide harmonic support with chords and moving lines. The vocal line becomes more active in measure 47, with a sequence of eighth notes, before returning to a sparse pattern in measures 48 and 49.

50

Drums

Guitar

Bass

Vocals

Detailed description: This system covers measures 50, 51, and 52. The instrumental parts continue their respective parts. The drum part is consistent. The guitar and bass parts maintain the harmonic structure. The vocal line has a brief rest in measure 50, followed by a melodic phrase in measure 51, and another rest in measure 52.

53

Drums

Guitar

Bass

Vocals

Detailed description: This system covers measures 53 and 54. The drums play a consistent pattern of eighth notes on the snare and bass drum. The guitar part features a mix of chords and single notes, with some measures containing rests. The bass line is a steady eighth-note pattern. The vocal line has a few notes in measure 53 and a short phrase in measure 54.

55

Drums

Guitar

Bass

Vocals

Detailed description: This system covers measures 55 and 56. The drums continue with the same eighth-note pattern. The guitar part has more complex chordal structures. The bass line remains an eighth-note pattern. The vocal line has a longer phrase in measure 55 and continues in measure 56.

57

Drums

Guitar Bass

Bass

Vocals

Detailed description: This system covers measures 57 and 58. The drums play a more varied pattern, including some triplet rhythms. The guitar part has a more active role with eighth-note runs. The bass line is a steady eighth-note pattern. The vocal line has a phrase in measure 57 and a triplet in measure 58.

59

Drums

Guitar Bass

Bass

Vocals

Detailed description: This system covers measures 59 and 60. The drums part features a complex pattern with various note values and rests, including asterisks above some notes. The guitar bass part consists of eighth-note chords and single notes. The bass part has a steady eighth-note line. The vocal part has a melodic line with some rests.

61

Drums

Guitar Bass

Bass

Vocals

Detailed description: This system covers measures 61 and 62. The drums part includes triplets and various rhythmic patterns. The guitar bass part has eighth-note chords and single notes. The bass part has a steady eighth-note line. The vocal part has a melodic line with some rests.

63

Drums

Guitar Bass

Bass

Vocals

Detailed description: This system covers measures 63 and 64. The drums part features a complex pattern with asterisks above some notes and a triplet of sixteenth notes. The guitar bass part consists of eighth-note chords and single notes. The bass part has a steady eighth-note line. The vocal part has a melodic line with some rests.

65

Drums

Guitar Bass

Bass

Vocals

67

Drums

Guitar Bass

Bass

Vocals

69

Drums

Guitar Bass

Bass

72

Drums

Guitar

Guitar Bass

Acoustic Guitar

Bass

Detailed description: This block contains the musical notation for measures 72 and 73. The score is arranged in five staves: Drums, Guitar, Guitar Bass, Acoustic Guitar, and Bass. The key signature is three sharps (F#, C#, G#) and the time signature is 7/8. Measure 72 features a drum pattern with eighth notes and a guitar part with a series of chords. Measure 73 shows a change in the drum pattern to a more complex, syncopated rhythm and continues the guitar and bass parts.

74

Drums

Guitar

Acoustic Guitar

Bass

Detailed description: This block contains the musical notation for measures 74, 75, and 76. The score is arranged in four staves: Drums, Guitar, Acoustic Guitar, and Bass. The key signature remains three sharps (F#, C#, G#) and the time signature is 7/8. Measure 74 features a drum pattern with eighth notes and a guitar part with a series of chords. Measure 75 shows a change in the drum pattern to a more complex, syncopated rhythm and continues the guitar and bass parts. Measure 76 continues the drum pattern and the guitar and bass parts.

77

Drums

Guitar

Guitar Bass

Acoustic Guitar

Bass

80

Drums

Guitar

Guitar Bass

Acoustic Guitar

Bass

83

Drums

Guitar

Guitar Bass

Acoustic Guitar

Bass

Detailed description: This musical score block covers measures 83, 84, and 85. It features five staves: Drums, Guitar, Guitar Bass, Acoustic Guitar, and Bass. The Drums staff shows a consistent pattern of eighth notes on the snare and bass drum. The Guitar staff has a complex rhythm with chords and single notes. The Guitar Bass staff is mostly empty. The Acoustic Guitar staff has a similar complex rhythm to the electric guitar. The Bass staff has a steady eighth-note line.

86

Drums

Guitar

Guitar Bass

Acoustic Guitar

Bass

Detailed description: This musical score block covers measures 86, 87, and 88. It features five staves: Drums, Guitar, Guitar Bass, Acoustic Guitar, and Bass. The Drums staff continues with the same eighth-note pattern. The Guitar staff has a complex rhythm with chords and single notes. The Guitar Bass staff is mostly empty. The Acoustic Guitar staff has a similar complex rhythm to the electric guitar. The Bass staff has a steady eighth-note line.

89

Drums

Guitar

Acoustic Guitar

Bass

Rush - LESSONS

Drums

♩ = 104,999924

5

9

13

17

21

25

28

31

34

V.S.

Drums

37

4/4

41

45

49

53

57

61

3 3 6 3

64

67

3 3 3 3

70

7/8 4/4

Drums

73

Musical notation for drum set at measure 73. The notation is on a five-line staff with a double bar line on the left. The time signature is 4/4. The top staff shows a continuous eighth-note pattern of 'x' marks, representing a hi-hat or snare. The bottom staff shows a bass drum pattern with quarter notes on the 2nd and 4th beats of each measure, and a quarter rest on the 1st and 3rd beats.

77

Musical notation for drum set at measure 77. The notation is on a five-line staff with a double bar line on the left. The time signature is 4/4. The top staff shows a continuous eighth-note pattern of 'x' marks. The bottom staff shows a bass drum pattern with quarter notes on the 2nd and 4th beats of each measure, and a quarter rest on the 1st and 3rd beats.

81

Musical notation for drum set at measure 81. The notation is on a five-line staff with a double bar line on the left. The time signature is 4/4. The top staff shows a continuous eighth-note pattern of 'x' marks. The bottom staff shows a bass drum pattern with quarter notes on the 2nd and 4th beats of each measure, and a quarter rest on the 1st and 3rd beats.

85

Musical notation for drum set at measure 85. The notation is on a five-line staff with a double bar line on the left. The time signature is 4/4. The top staff shows a continuous eighth-note pattern of 'x' marks. The bottom staff shows a bass drum pattern with quarter notes on the 2nd and 4th beats of each measure, and a quarter rest on the 1st and 3rd beats.

88

Musical notation for drum set at measure 88. The notation is on a five-line staff with a double bar line on the left. The time signature is 4/4. The top staff shows a continuous eighth-note pattern of 'x' marks. The bottom staff shows a bass drum pattern with quarter notes on the 2nd and 4th beats of each measure, and a quarter rest on the 1st and 3rd beats. The notation ends with a double bar line.

Rush - LESSONS

Guitar

♩ = 104,999924

5

9

13

17

20

15

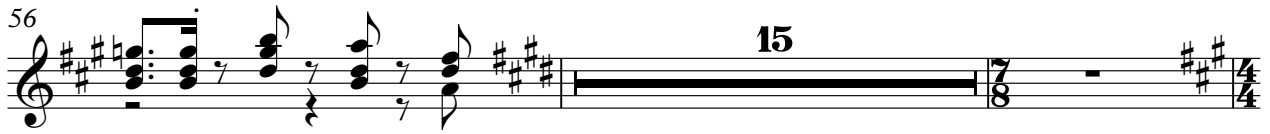
37

41

45

49

V.S.



Rush - LESSONS

Guitar Bass

♩ = 104,999924

20

23

27

31

34

37

20

59

63

67

70

V.S.

2

Guitar Bass

73

5

83

4

Rush - LESSONS

Acoustic Guitar

♩ = 104,999924

20 15

37

20 15

73

77

81

85

88

Rush - LESSONS

Bass

♩ = 104,999924



5



9



13



17



20



23



26



29



33



V.S.

37



41



45



49



53



56



59



62



65



69



73



77



81



85



88



Rush - LESSONS

Vocals

♩ = 104,999924

3

8

13

17

21

26

30

37

4

4

41

46

51

56

61

65

73

19