

# S Club 7 - Bring It All Back

♩ = 105,000107

Whistle

Drums

Detailed description: This block contains the first system of music. The Whistle part is written on a treble clef staff in 4/4 time. It begins with a rest, followed by a melodic line consisting of three groups of eighth-note triplets. The notes in each triplet are G4, A4, and B4. The Drums part is written on a drum clef staff in 4/4 time, featuring a simple rhythmic pattern of eighth notes: two eighth notes on the first beat, two on the second, two on the third, and two on the fourth.



2

Flute

Whistle

Drums

Bass

Brass

Detailed description: This block contains the second system of music, starting with a measure number '2'. The Flute part is on a treble clef staff, playing a melodic line with eighth notes and rests. The Whistle part is also on a treble clef staff, playing a similar melodic line. The Drums part is on a drum clef staff, featuring a complex rhythmic pattern with eighth notes and rests, including some notes marked with an asterisk. The Bass part is on a bass clef staff, playing a melodic line with eighth notes and rests. The Brass part is on a treble clef staff, playing a melodic line with eighth notes and rests.

3

Flute

Whistle

Drums

Bass

Brass

Detailed description: This system contains measures 3 and 4 of a musical score. The Flute part (top staff) has a treble clef and a key signature of one sharp (F#). It begins with a triplet of eighth notes (F#, G, A) followed by a sequence of eighth notes (B, C, D, E, F#, G, A, B). The Whistle part (second staff) has a treble clef and plays a single note (F#) in measure 3, followed by a triplet of eighth notes (F#, G, A) in measure 4. The Drums part (third staff) has a drum clef and features a complex rhythmic pattern with various note heads (x, o, triangle) and stems. The Bass part (fourth staff) has a bass clef and plays a sequence of notes (F#, G, A, B, C, D, E, F#, G, A, B). The Brass part (bottom staff) has a treble clef and plays a sequence of notes (F#, G, A, B, C, D, E, F#, G, A, B).



4

Flute

Whistle

Drums

Bass

Brass

Detailed description: This system contains measures 5 and 6 of a musical score. The Flute part (top staff) has a treble clef and a key signature of one sharp (F#). It begins with a triplet of eighth notes (F#, G, A) followed by a sequence of eighth notes (B, C, D, E, F#, G, A, B). The Whistle part (second staff) has a treble clef and plays a single note (F#) in measure 5, followed by a triplet of eighth notes (F#, G, A) in measure 6. The Drums part (third staff) has a drum clef and features a complex rhythmic pattern with various note heads (x, o, triangle) and stems. The Bass part (fourth staff) has a bass clef and plays a sequence of notes (F#, G, A, B, C, D, E, F#, G, A, B). The Brass part (bottom staff) has a treble clef and plays a sequence of notes (F#, G, A, B, C, D, E, F#, G, A, B).

5

Flute

Whistle

Drums

Bass

Brass

Detailed description: This system contains measures 5 through 8. The Flute part (treble clef) starts with a quarter rest, followed by a quarter note G#4, a quarter note A4, a quarter note B4, a quarter note C5, and a quarter note B4. The Whistle part (treble clef) has a quarter rest, followed by a quarter note G#4, a quarter note A4, a quarter note B4, and a quarter note C5. The Drums part (percussion clef) features a consistent rhythmic pattern of eighth notes with 'x' marks above them, indicating cymbal hits. The Bass part (bass clef) has a quarter note G2, a quarter note F2, and a quarter note E2. The Brass part (treble clef) has a quarter rest, followed by a quarter note G#4, a quarter note A4, a quarter note B4, and a quarter note C5.



6

Flute

Whistle

Drums

Bass

Brass

Detailed description: This system contains measures 9 through 12. The Flute part (treble clef) has a quarter note G#4, a quarter note A4, a quarter note B4, a quarter note C5, a quarter note B4, a quarter note A4, a quarter note G#4, and a quarter note F#4. The Whistle part (treble clef) has a quarter note G#4, a quarter note A4, a quarter note B4, and a quarter note C5. The Drums part (percussion clef) continues the eighth-note cymbal pattern. The Bass part (bass clef) has a quarter note G2, a quarter note F2, a quarter note E2, a quarter note D2, a quarter note C2, and a quarter note B1. The Brass part (treble clef) has a quarter note G#4, a quarter note A4, a quarter note B4, a quarter note C5, a quarter note B4, a quarter note A4, a quarter note G#4, and a quarter note F#4.

7

Flute

Whistle

Drums

Bass

Brass



8

Flute

Whistle

Drums

Bass

Brass

9

Flute

Whistle

Drums

Bass

Brass



10

Drums

Guitar

Bass



12

Flute

Drums

Guitar

Bass

14

Drums

Guitar

Bass

Brass

Detailed description: This block contains the musical notation for measures 14 and 15. It features four staves: Drums, Guitar, Bass, and Brass. The Drums staff shows a complex rhythmic pattern with various note heads and stems. The Guitar staff uses a treble clef and contains a series of eighth notes with stems pointing down. The Bass staff uses a bass clef and contains a sequence of eighth notes with stems pointing up. The Brass staff uses a treble clef and contains a sequence of eighth notes with stems pointing up. The notation includes various musical symbols such as beams, stems, and note heads.



16

Drums

Guitar

Bass

Brass

Detailed description: This block contains the musical notation for measures 16 and 17. It features four staves: Drums, Guitar, Bass, and Brass. The Drums staff shows a complex rhythmic pattern with various note heads and stems. The Guitar staff uses a treble clef and contains a series of eighth notes with stems pointing down. The Bass staff uses a bass clef and contains a sequence of eighth notes with stems pointing up. The Brass staff uses a treble clef and contains a sequence of eighth notes with stems pointing up. The notation includes various musical symbols such as beams, stems, and note heads.

17

Drums

Guitar

Bass

Organ

Brass



18

Drums

Bass

Organ

Brass

19

Drums

Bass

Organ

Brass



21

Drums

Bass

Organ

Brass



22

Flute

Whistle

Drums

Bass

Brass

Detailed description: This block contains the musical notation for measures 22 and 23. It features five staves: Flute (treble clef), Whistle (treble clef), Drums (percussion clef), Bass (bass clef), and Brass (treble clef). The Flute part has a melodic line with slurs and accents. The Whistle part provides harmonic support with chords. The Drums part shows a complex rhythmic pattern with various drum symbols. The Bass part has a steady eighth-note accompaniment. The Brass part plays block chords with some movement.



23

Flute

Whistle

Drums

Bass

Brass

Detailed description: This block contains the musical notation for measures 23 and 24. It features five staves: Flute (treble clef), Whistle (treble clef), Drums (percussion clef), Bass (bass clef), and Brass (treble clef). The Flute part continues its melodic line. The Whistle part has a more active role with eighth notes. The Drums part maintains the rhythmic pattern. The Bass part continues with eighth notes. The Brass part plays chords with some chromatic movement.

24

Flute

Whistle

Drums

Bass

Brass



25

Flute

Whistle

Drums

Bass

Brass

26

Flute

Whistle

Drums

Bass

Brass



27

Flute

Whistle

Drums

Bass

Brass

28

Flute

Whistle

Drums

Bass

Brass



29

Flute

Whistle

Drums

Bass

Brass

30

Drums

Guitar

Bass



32

Flute

Drums

Guitar

Bass



34

Drums

Guitar

Bass

36

Flute

Drums

Guitar

Bass



38

Drums

Guitar

Bass

Brass



40

Drums

Guitar

Bass

Brass

41

Drums

Guitar

Bass

Organ

Brass



42

Drums

Bass

Organ

Brass

43

Drums

Bass

Organ

Brass



45

Drums

Bass

Organ

Brass



46

Flute

Whistle

Drums

Bass

Brass

Detailed description: This system contains measures 46 and 47. The Flute part (top staff) has a treble clef and a key signature of one sharp (F#). It features a melodic line with eighth and quarter notes, including rests. The Whistle part (second staff) has a treble clef and a key signature of one sharp, with a simpler melodic line. The Drums part (third staff) uses a drum set notation with various symbols for snare, hi-hat, and bass drum. The Bass part (fourth staff) has a bass clef and a key signature of one sharp, with a line of eighth and quarter notes. The Brass part (bottom staff) has a treble clef and a key signature of one sharp, with a line of chords and notes.



47

Flute

Whistle

Drums

Bass

Brass

Detailed description: This system contains measures 47 and 48. The Flute part (top staff) has a treble clef and a key signature of one sharp, with a melodic line. The Whistle part (second staff) has a treble clef and a key signature of one sharp, with a melodic line. The Drums part (third staff) uses a drum set notation. The Bass part (fourth staff) has a bass clef and a key signature of one sharp, with a melodic line. The Brass part (bottom staff) has a treble clef and a key signature of one sharp, with a line of chords and notes.

48

Flute

Whistle

Drums

Bass

Brass



49

Flute

Whistle

Drums

Bass

Brass



52

Flute

Whistle

Drums

Bass

Brass



53

Flute

Whistle

Drums

Bass

Brass

54

Drums

Guitar

Bass

Brass

Measures 54-55. Drums: Snare and hi-hat pattern. Guitar: Rhythmic strumming. Bass: Walking bass line. Brass: Harmonic accompaniment.



56

Drums

Guitar

Bass

Brass

Measures 56-57. Drums: Snare and hi-hat pattern. Guitar: Rhythmic strumming. Bass: Walking bass line. Brass: Harmonic accompaniment.



58

Drums

Guitar

Bass

Brass

Measures 58-59. Drums: Snare and hi-hat pattern. Guitar: Rhythmic strumming. Bass: Walking bass line. Brass: Harmonic accompaniment.

60

Drums

Guitar

Bass

Brass

Detailed description: This system contains measures 60 and 61. The Drums part features a consistent pattern of eighth notes with 'x' marks above them, indicating a specific drum sound. The Guitar part consists of eighth notes with slurs and accents. The Bass part has a melodic line with a sharp sign and a slur. The Brass part has a similar melodic line with a sharp sign and a slur.



61

Drums

Guitar

Bass

Organ

Brass

Detailed description: This system contains measures 61 and 62. The Drums part continues the pattern from measure 60. The Guitar part has a melodic line with a slur and a sharp sign. The Bass part has a melodic line with a sharp sign and a slur. The Organ part has a melodic line with a slur and a sharp sign, ending with a triplet of eighth notes. The Brass part has a melodic line with a sharp sign and a slur.

62

Drums

Bass

Organ

Brass

Detailed description: This block contains the musical notation for measures 62 and 63. The Drums part features a complex, multi-layered pattern with various rhythmic values and accents. The Bass part consists of a melodic line with eighth and sixteenth notes, including a triplet. The Organ part has a few notes in the first measure followed by rests. The Brass part has a few notes in the second measure, including a triplet.



63

Drums

Bass

Organ

Brass

Detailed description: This block contains the musical notation for measures 63 and 64. The Drums part continues with a complex, multi-layered pattern. The Bass part has a melodic line with eighth and sixteenth notes, including a triplet. The Organ part has a few notes in the first measure followed by rests. The Brass part has a few notes in the second measure, including a triplet.

65

Whistle

Drums

Bass

Organ

Brass



67

Flute

Whistle

Drums



69

Flute

Whistle

Drums

Bass

Brass



71

Flute

Whistle

Drums

Bass

Brass

72

Flute

Whistle

Drums

Bass

Brass



73

Flute

Whistle

Drums

Bass

Brass

74

Flute

Whistle

Drums

Bass

Brass



75

Flute

Whistle

Drums

Bass

Brass

76

Flute

Whistle

Drums

Bass

Brass

Detailed description: This system contains measures 76 and 77. The Flute part (treble clef) starts with a B-flat and plays a melodic line with eighth notes and rests. The Whistle part (treble clef) plays a similar melodic line. The Drums part (percussion clef) features a complex rhythmic pattern with snare and tom-tom hits. The Bass part (bass clef) provides a simple harmonic accompaniment. The Brass part (treble clef) plays chords and melodic fragments.



77

Flute

Whistle

Drums

Bass

Brass

Detailed description: This system contains measures 77 and 78. The Flute part (treble clef) continues the melodic line from measure 76. The Whistle part (treble clef) also continues its line. The Drums part (percussion clef) maintains the same rhythmic pattern. The Bass part (bass clef) continues with its accompaniment. The Brass part (treble clef) plays chords and melodic fragments.

78

Flute

Whistle

Drums

Bass

Brass



79

Flute

Whistle

Drums

Bass

Brass

80

Flute

Whistle

Drums

Bass

Brass



81

Flute

Whistle

Drums

Bass

Brass

82

Flute

Whistle

Drums

Bass

Brass



83

Flute

Whistle

Drums

Bass

Brass

84

Flute

Whistle

Drums

Bass

Brass

Detailed description: This system contains measures 84 through 87. The Flute part (treble clef) starts with a B-flat and plays a melodic line with eighth and quarter notes. The Whistle part (treble clef) plays a similar melodic line. The Drums part (percussion clef) features a complex rhythmic pattern with eighth and sixteenth notes, including accents and beams. The Bass part (bass clef) has a simple line with quarter and eighth notes. The Brass part (treble clef) plays chords and melodic fragments.



85

Flute

Whistle

Drums

Bass

Brass

Detailed description: This system contains measures 85 through 88. The Flute part (treble clef) continues the melodic line from measure 84. The Whistle part (treble clef) also continues its line. The Drums part (percussion clef) maintains the rhythmic pattern. The Bass part (bass clef) continues with quarter and eighth notes. The Brass part (treble clef) plays chords and melodic fragments.



Flute

S Club 7 - Bring It All Back

♩ = 105,000107

4

7

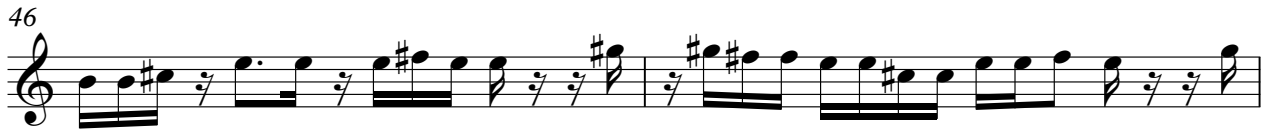
10

23

26

28

33





Whistle

S Club 7 - Bring It All Back

♩ = 105,000107

3

8

12

24

29

16

49

52

12

2

Whistle

66

A musical staff in treble clef showing measures 66 to 70. The key signature has one sharp (F#). The melody consists of quarter and eighth notes with some slurs.

71

A musical staff in treble clef showing measures 71 to 75. The key signature changes to one flat (Bb) starting at measure 73. The melody continues with quarter and eighth notes.

76

A musical staff in treble clef showing measures 76 to 80. The key signature remains one flat (Bb). The melody features quarter and eighth notes with slurs.

81

A musical staff in treble clef showing measures 81 to 83. The key signature remains one flat (Bb). The melody consists of quarter and eighth notes.

84

A musical staff in treble clef showing measures 84 to 86. The key signature remains one flat (Bb). The melody concludes with quarter and eighth notes.

# S Club 7 - Bring It All Back

## Drums

♩ = 105,000107

3

5

7

9

11

13

15

17

19

V.S.

Drums

21

23

25

27

29

31

33

35

37

39

41

43

45

47

49

51

53

55

57

59

V.S.



Drums

61

Two staves of musical notation. The top staff contains a series of 'x' marks with beams, representing cymbal or snare patterns. The bottom staff contains a series of upward-pointing triangles with stems, representing a bass drum pattern. The notation is divided into two measures.

63

Two staves of musical notation. The top staff contains a series of 'x' marks with beams. The bottom staff contains a series of upward-pointing triangles with stems. The notation is divided into two measures.

65

Two staves of musical notation. The top staff contains a series of 'x' marks with beams. The bottom staff contains a series of upward-pointing triangles with stems. The notation is divided into two measures.

67

Two staves of musical notation. The top staff is empty. The bottom staff contains a series of upward-pointing triangles with stems. The notation is divided into two measures.

69

Two staves of musical notation. The top staff is empty. The bottom staff contains a series of upward-pointing triangles with stems. The notation is divided into two measures.

71

Two staves of musical notation. The top staff contains a series of 'x' marks with beams. The bottom staff contains a series of upward-pointing triangles with stems. The notation is divided into two measures.

73

Two staves of musical notation. The top staff contains a series of 'x' marks with beams. The bottom staff contains a series of upward-pointing triangles with stems. The notation is divided into two measures.

75

Two staves of musical notation. The top staff contains a series of 'x' marks with beams. The bottom staff contains a series of upward-pointing triangles with stems. The notation is divided into two measures.

77

Two staves of musical notation. The top staff contains a series of 'x' marks with beams. The bottom staff contains a series of upward-pointing triangles with stems. The notation is divided into two measures.

79

Two staves of musical notation. The top staff contains a series of 'x' marks with beams. The bottom staff contains a series of upward-pointing triangles with stems. The notation is divided into two measures.

Drums

81

Musical notation for measure 81, featuring a drum staff with a treble clef and a 7/8 time signature. The notation includes a series of eighth notes with upward-pointing stems, and a series of eighth notes with downward-pointing stems. Above the staff, there are groups of eighth notes with 'x' marks, indicating specific drum sounds or techniques. The measure is divided into two parts by a bar line.

83

Musical notation for measure 83, featuring a drum staff with a treble clef and a 7/8 time signature. The notation includes a series of eighth notes with upward-pointing stems, and a series of eighth notes with downward-pointing stems. Above the staff, there are groups of eighth notes with 'x' marks, indicating specific drum sounds or techniques. The measure is divided into two parts by a bar line.

85

Musical notation for measure 85, featuring a drum staff with a treble clef and a 7/8 time signature. The notation includes a series of eighth notes with upward-pointing stems, and a series of eighth notes with downward-pointing stems. Above the staff, there are groups of eighth notes with 'x' marks, indicating specific drum sounds or techniques. The measure is divided into two parts by a bar line.

# S Club 7 - Bring It All Back

Guitar

♩ = 105,000107

9

12

15

18

12

32

35

38

40

12

54



57



60



# S Club 7 - Bring It All Back

Bass

♩ = 105,000107



6



10



13



16



19



22



26



30



33



V.S.

36



39



42



45



48



52



56



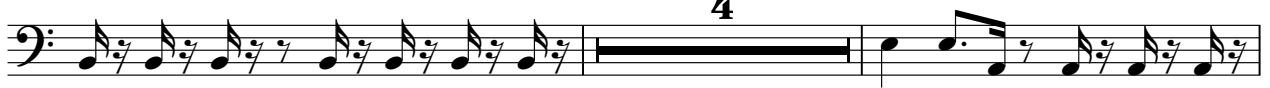
59



62



65



71



75



79



83







# S Club 7 - Bring It All Back

Brass

♩ = 105,000107

4

6

8

14

17

21

23

25

27

V.S.

29 8

39

42

46

48

50

52

55

58

61

