

S T S - Furstenfeld 3

♩ = 89,000961

MELODY

HARMONICA

TUBA

DRUMS

STEEL GTR

DISTORTION

FRETLESS

CHOIR AAHS

8

♩ = 89,000961

ACCORDION



5

CHOIR AAHS



8

CHOIR AAHS

CHOIR AAHS

12



CHOIR AAHS

15

♩ = 119,000397



DRUMS

DRUMS

STEEL GTR

19



MELODY

MELODY

21

DRUMS

DRUMS

STEEL GTR

STEEL GTR

22



MELODY

MELODY

23

DRUMS

DRUMS

STEEL GTR

STEEL GTR

24



MELODY

MELODY

25

DRUMS

DRUMS

STEEL GTR

STEEL GTR

26

27

MELODY

DRUMS

STEEL GTR



29

MELODY

DRUMS

STEEL GTR



31

MELODY

DRUMS

STEEL GTR



33

MELODY

DRUMS

STEEL GTR

35

MELODY

DRUMS

STEEL GTR

FRETLESS



37

MELODY

DRUMS

STEEL GTR

FRETLESS

CHOIR AAHS



39

MELODY

DRUMS

STEEL GTR

FRETLESS

CHOIR AAHS

41

MELODY

DRUMS

STEEL GTR

FRETLESS

CHOIR AAHS



43

MELODY

DRUMS

STEEL GTR

FRETLESS



45

HARMONICA

DRUMS

STEEL GTR

FRETLESS

47

HARMONICA

DRUMS

STEEL GTR

FRETLESS



49

MELODY

DRUMS

STEEL GTR

FRETLESS



51

MELODY

DRUMS

STEEL GTR

FRETLESS

53

MELODY

DRUMS

STEEL GTR

FRETLESS



55

MELODY

DRUMS

STEEL GTR

FRETLESS



57

MELODY

DRUMS

STEEL GTR

DISTORTION

FRETLESS

59

MELODY

DRUMS

STEEL GTR

FRETLESS



61

MELODY

DRUMS

STEEL GTR

FRETLESS



63

MELODY

DRUMS

STEEL GTR

FRETLESS

65

MELODY

DRUMS

STEEL GTR

FRETLESS

CHOIR AAHS



67

MELODY

DRUMS

STEEL GTR

FRETLESS

CHOIR AAHS

75

DRUMS

STEEL GTR

FRETLESS

ACCORDION



77

MELODY

DRUMS

STEEL GTR

FRETLESS

ACCORDION

79

MELODY

DRUMS

STEEL GTR

FRETLESS

ACCORDION



81

MELODY

DRUMS

STEEL GTR

FRETLESS

ACCORDION

83

MELODY

DRUMS

STEEL GTR

FRETLESS

ACCORDION



85

MELODY

DRUMS

STEEL GTR

FRETLESS

ACCORDION

87

MELODY

DRUMS

STEEL GTR

FRETLESS

ACCORDION



89

MELODY

DRUMS

STEEL GTR

FRETLESS

ACCORDION

91

MELODY

DRUMS

STEEL GTR

FRETLESS

ACCORDION



93

MELODY

TUBA

DRUMS

STEEL GTR

FRETLESS

CHOIR AAHS

ACCORDION

99

MELODY

TUBA

DRUMS

STEEL GTR

FRETLESS

ACCORDION



101

MELODY

TUBA

DRUMS

STEEL GTR

FRETLESS

CHOIR AAHS

104

MELODY

TUBA

DRUMS

STEEL GTR

FRETLESS

CHOIR AAHS



107

MELODY

TUBA

DRUMS

STEEL GTR

FRETLESS

ACCORDION

109

TUBA

DRUMS

STEEL GTR

FRETLESS

ACCORDION



110

MELODY

HARMONICA

TUBA

DRUMS

STEEL GTR

DISTORTION

FRETLESS

ACCORDION

S T S - Furstenfeld 3

MELODY

♩ = 89,000961 ♩ = 119,000397

16 3

23 3

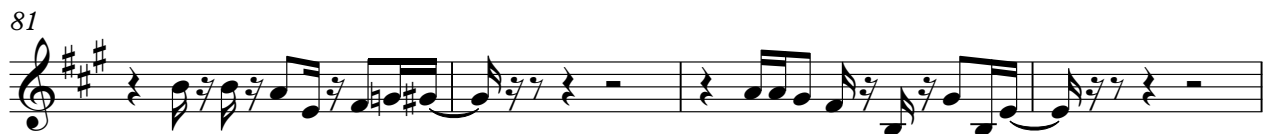
26

30

34

38

42 4



93



98



102



107



HARMONICA

S T S - Furstenfeld 3

♩ = 89,000961 ♩ = 119,000397

16 **27**

4/4

46

3

49

62 **3**

4/4

DRUMS

S T S - Furstenfeld 3

♩ = 89,000961

♩ = 119,000397

16

16

21

21

25

25

29

29

33

33

37

37

39

39

41

41

43

43

45

45

V.S.

DRUMS

47



49



51



53



55



57



60



62



64



66



DRUMS

68



70



72



74



76



78



80



82



84



86



V.S.

DRUMS

88

90

92

94

96

98

100

107

109

STEEL GTR

S T S - Furstenfeld 3

♩ = 89,000961 ♩ = 119,000397

16

20

23

26

29

32

35

38

41

44

V.S.

Musical score for Steel Guitar, page 2, measures 47-75. The score is written in treble clef with a key signature of one sharp (F#). The music consists of a continuous sequence of chords and melodic lines, primarily using eighth and sixteenth notes. The chords are often dyads or triads, and the melodic lines are often single notes or pairs of notes. The score is divided into measures, with measure numbers 47, 50, 53, 56, 60, 63, 66, 69, 72, and 75 indicated at the beginning of each line. The notation includes various rhythmic values, including eighth and sixteenth notes, and rests. The overall style is characteristic of traditional steel guitar music.

Musical score for Steel Guitar, page 3, measures 78-109. The score is written in treble clef with a key signature of one sharp (F#). The music consists of a series of chords and melodic lines, primarily using eighth and sixteenth notes. The score is divided into measures, with measure numbers 78, 81, 84, 87, 90, 93, 96, 99, 106, and 109 indicated at the beginning of their respective staves. The score concludes with a double bar line and a final chord. A measure rest of 4 measures is shown at the end of measure 99, and a measure rest of 3 measures is shown at the end of measure 109.

FRETLESS

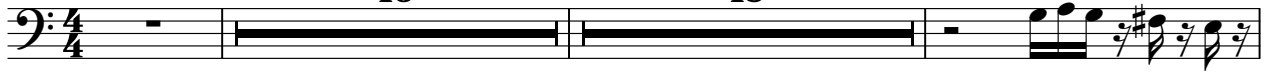
S T S - Furstenfeld 3

♩ = 89,000961

♩ = 119,000397

16

18



37



41



46



51



56



61



66



71



76



V.S.

81



86



91



96



101



108



CHOIR AAHS

S T S - Furstenfeld 3

♩ = 89,000961

6

10

14

18 = 119,000397

18

39

43

22

68

22

93

96

2

Detailed description: This is a guitar score for a piece titled 'CHOIR AAHS' by 'S T S - Furstenfeld 3'. The score is written in 4/4 time and consists of ten staves of music. The first staff begins with a tempo marking of ♩ = 89,000961. The music is primarily composed of chords with some melodic lines. There are several instances of rests, some of which are marked with a number (18, 22, 22, 2) indicating the duration in measures. The score includes various musical ornaments such as triplets and grace notes. The key signature has one sharp (F#). The piece concludes with a final chord and a double bar line.

ACCORDION

S T S - Furstenfeld 3

♩ = 89,000961 ♩ = 119,000397

16 55

74

77

80

83

86

89

92

95

98

Detailed description: The image shows a musical score for an accordion in 4/4 time. It consists of ten staves of music. The first staff begins with a 4/4 time signature and a key signature of one sharp (F#). It contains a whole rest for 16 measures, followed by a whole rest for 55 measures, and then a series of chords. The subsequent staves (74-98) continue with a sequence of chords, primarily consisting of triads and dyads, with some sixteenth-note patterns. The key signature remains one sharp throughout. The tempo markings at the top indicate a quarter note equals 89,000961 and 119,000397.

V.S.

