

Sarah McLachlan - Angel

♩ = 95,000145

"Angel" by Sarah McLachlan

"Angel" by Sarah McLachlan

2

"Angel" by Sarah McLachlan

3

Sequenced by: Brian Cox

4

"Angel" by Sarah McLachlan

3

Sequenced by: Brian Cox

5

"Angel" by Sarah McLachlan

Sequenced by: Brian Cox

6

"Angel" by Sarah McLachlan

Sequenced by: Brian Cox

"Angel" by Sarah McLachlan

Sequenced by: Brian Cox

"Angel" by Sarah McLachlan

Sequenced by: Brian Cox

"Angel" by Sarah McLachlan

Sequenced by: Brian Cox

"Angel" by Sarah McLachlan

Sequenced by: Brian Cox

"Angel" by Sarah McLachlan

Sequenced by: Brian Cox

"Angel" by Sarah McLachlan

Sequenced by: Brian Cox

Musical notation for measure 12, top staff. It features a treble clef, a key signature of one sharp (F#), and a 7/8 time signature. The melody consists of a quarter note F#, an eighth note G, an eighth note A, and a quarter note B, followed by a quarter rest. A bracket under the first four notes indicates a triplet. The measure ends with a quarter note C and a quarter note D.

"Angel" by Sarah McLachlan

Musical notation for measure 12, bottom staff. It features a treble clef, a key signature of one sharp (F#), and a 7/8 time signature. The accompaniment consists of a series of chords and arpeggiated figures, including a triplet of eighth notes in the first half of the measure.

Sequenced by: Brian Cox

Musical notation for measure 13, top staff. It features a treble clef, a key signature of one sharp (F#), and a 7/8 time signature. The melody consists of a quarter note F#, a quarter note G, a quarter note A, a quarter note B, and a quarter note C.

"Angel" by Sarah McLachlan

Musical notation for measure 13, bottom staff. It features a treble clef, a key signature of one sharp (F#), and a 7/8 time signature. The accompaniment consists of a series of chords and arpeggiated figures, including a triplet of eighth notes in the first half of the measure.

Sequenced by: Brian Cox

Musical notation for measure 14, top staff. It features a treble clef, a key signature of one sharp (F#), and a 7/8 time signature. The melody consists of a quarter note F#, a quarter note G, a quarter note A, a quarter note B, and a quarter note C.

"Angel" by Sarah McLachlan

Musical notation for measure 14, bottom staff. It features a treble clef, a key signature of one sharp (F#), and a 7/8 time signature. The accompaniment consists of a series of chords and arpeggiated figures, including a triplet of eighth notes in the first half of the measure.

Sequenced by: Brian Cox

Musical notation for measure 15, top staff. It features a treble clef, a key signature of one sharp (F#), and a 7/8 time signature. The melody consists of a quarter note F#, a quarter note G, a quarter note A, a quarter note B, and a quarter note C.

"Angel" by Sarah McLachlan

Musical notation for measure 15, bottom staff. It features a treble clef, a key signature of one sharp (F#), and a 7/8 time signature. The accompaniment consists of a series of chords and arpeggiated figures, including a triplet of eighth notes in the first half of the measure.

Sequenced by: Brian Cox

Musical notation for measure 16, top staff. It features a treble clef, a key signature of one sharp (F#), and a 7/8 time signature. The melody consists of a quarter note F#, a quarter note G, a quarter note A, a quarter note B, and a quarter note C.

"Angel" by Sarah McLachlan

Musical notation for measure 16, bottom staff. It features a treble clef, a key signature of one sharp (F#), and a 7/8 time signature. The accompaniment consists of a series of chords and arpeggiated figures, including a triplet of eighth notes in the first half of the measure.

Sequenced by: Brian Cox

"Angel" by Sarah McLachlan

17

Sequenced by: Brian Cox

"Angel" by Sarah McLachlan

18

Sequenced by: Brian Cox

"Angel" by Sarah McLachlan

19

Sequenced by: Brian Cox

"Angel" by Sarah McLachlan

20

Sequenced by: Brian Cox

"Angel" by Sarah McLachlan

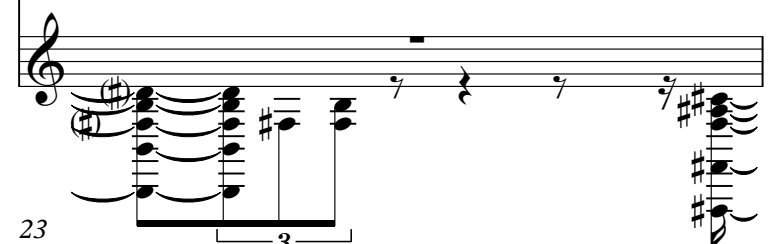
21

Sequenced by: Brian Cox




Musical notation for measure 22, top staff. Treble clef, key signature of one sharp (F#). The melody consists of eighth notes: F#4, G4, A4, B4, A4, G4, F#4, E4, D4, C4.

"Angel" by Sarah McLachlan



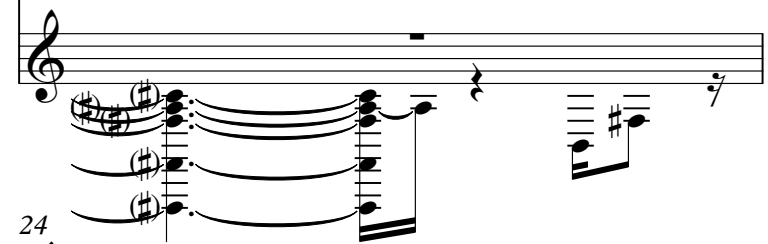
Musical notation for measure 22, bottom staff. Treble clef, key signature of one sharp (F#). Chords: F#4, G4, A4, B4, A4, G4, F#4, E4, D4, C4.

Sequenced by: Brian Cox



Musical notation for measure 23, top staff. Treble clef, key signature of one sharp (F#). The melody consists of eighth notes: F#4, G4, A4, B4, A4, G4, F#4, E4, D4, C4. A triplet of eighth notes (F#4, G4, A4) is marked with a '3'.

"Angel" by Sarah McLachlan



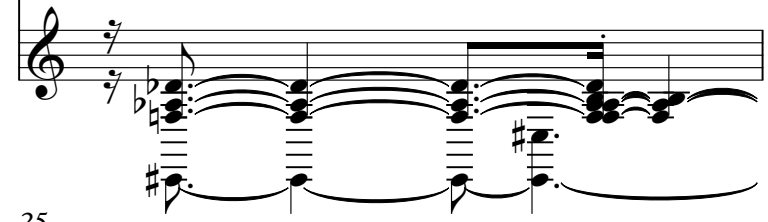
Musical notation for measure 23, bottom staff. Treble clef, key signature of one sharp (F#). Chords: F#4, G4, A4, B4, A4, G4, F#4, E4, D4, C4.

Sequenced by: Brian Cox



Musical notation for measure 24, top staff. Treble clef, key signature of one sharp (F#). The melody consists of eighth notes: F#4, G4, A4, B4, A4, G4, F#4, E4, D4, C4.

"Angel" by Sarah McLachlan



Musical notation for measure 24, bottom staff. Treble clef, key signature of one sharp (F#). Chords: F#4, G4, A4, B4, A4, G4, F#4, E4, D4, C4.

Sequenced by: Brian Cox



Musical notation for measure 25, top staff. Treble clef, key signature of one sharp (F#). The melody consists of eighth notes: F#4, G4, A4, B4, A4, G4, F#4, E4, D4, C4.

"Angel" by Sarah McLachlan



Musical notation for measure 25, bottom staff. Treble clef, key signature of one sharp (F#). Chords: F#4, G4, A4, B4, A4, G4, F#4, E4, D4, C4.

Sequenced by: Brian Cox



Musical notation for measure 26, top staff. Treble clef, key signature of one sharp (F#). The melody consists of eighth notes: F#4, G4, A4, B4, A4, G4, F#4, E4, D4, C4.

"Angel" by Sarah McLachlan



Musical notation for measure 26, bottom staff. Treble clef, key signature of one sharp (F#). Chords: F#4, G4, A4, B4, A4, G4, F#4, E4, D4, C4.

Sequenced by: Brian Cox

"Angel" by Sarah McLachlan

27

Sequenced by: Brian Cox

"Angel" by Sarah McLachlan

28

Sequenced by: Brian Cox

"Angel" by Sarah McLachlan

29

Sequenced by: Brian Cox

"Angel" by Sarah McLachlan

30

Sequenced by: Brian Cox

"Angel" by Sarah McLachlan

31

The image displays a guitar score for the song "Angel" by Sarah McLachlan, specifically measures 27 through 31. Each measure is presented in two parts: a "Sequenced by: Brian Cox" part and a "Guitar Tab" part. The sequenced parts are written in standard musical notation on a single staff, while the guitar tabs are written on a six-line staff with fret numbers and chord diagrams. Measure 27 shows a simple melodic line in the sequenced part and a corresponding guitar tab. Measure 28 features a more complex melodic line with a triplet of eighth notes in the sequenced part, and a guitar tab with a triplet bracket. Measure 29 has a simple melodic line in the sequenced part and a guitar tab with a triplet of eighth notes. Measure 30 shows a simple melodic line in the sequenced part and a guitar tab with a triplet of eighth notes. Measure 31 has a simple melodic line in the sequenced part and a guitar tab with a triplet of eighth notes.

Sequenced by: Brian Cox

"Angel" by Sarah McLachlan

32

Sequenced by: Brian Cox

"Angel" by Sarah McLachlan

33

Sequenced by: Brian Cox

"Angel" by Sarah McLachlan

34

Sequenced by: Brian Cox

"Angel" by Sarah McLachlan

35

Sequenced by: Brian Cox

"Angel" by Sarah McLachlan

36

Sequenced by: Brian Cox

"Angel" by Sarah McLachlan

37

Sequenced by: Brian Cox

"Angel" by Sarah McLachlan

38

Sequenced by: Brian Cox

"Angel" by Sarah McLachlan

39

Sequenced by: Brian Cox

"Angel" by Sarah McLachlan

40

Sequenced by: Brian Cox

"Angel" by Sarah McLachlan

41

Sequenced by: Brian Cox

"Angel" by Sarah McLachlan

Sequenced by: Brian Cox

"Angel" by Sarah McLachlan

Sequenced by: Brian Cox

"Angel" by Sarah McLachlan

Sequenced by: Brian Cox

"Angel" by Sarah McLachlan

Sequenced by: Brian Cox

"Angel" by Sarah McLachlan

Sequenced by: Brian Cox

"Angel" by Sarah McLachlan

Sequenced by: Brian Cox

"Angel" by Sarah McLachlan

Email <bhc_lava_lamp@hotmail.com>

"Angel" by Sarah McLachlan

Musical notation for measures 48 and 49. Measure 48 is on a treble clef staff with a key signature of one sharp (F#) and a 3/4 time signature. It contains a melodic line starting with a quarter note F#4, followed by eighth notes G4, A4, B4, and a quarter rest. Measure 49 is on a bass clef staff with a key signature of one sharp (F#) and a 3/4 time signature. It contains a bass line starting with a quarter note F#2, followed by eighth notes G2, A2, B2, and a quarter rest.

Email <bhc_lava_lamp@hotmail.com>

"Angel" by Sarah McLachlan

Musical notation for measures 49 and 50. Measure 49 is on a treble clef staff with a key signature of one sharp (F#) and a 3/4 time signature. It contains a melodic line starting with a quarter note F#4, followed by eighth notes G4, A4, B4, and a quarter rest. Measure 50 is on a bass clef staff with a key signature of one sharp (F#) and a 3/4 time signature. It contains a bass line starting with a quarter note F#2, followed by eighth notes G2, A2, B2, and a quarter rest.

Email <bhc_lava_lamp@hotmail.com>

"Angel" by Sarah McLachlan

Musical notation for measures 50 and 51. Measure 50 is on a treble clef staff with a key signature of one sharp (F#) and a 3/4 time signature. It contains a melodic line starting with a quarter note F#4, followed by eighth notes G4, A4, B4, and a quarter rest. Measure 51 is on a bass clef staff with a key signature of one sharp (F#) and a 3/4 time signature. It contains a bass line starting with a quarter note F#2, followed by eighth notes G2, A2, B2, and a quarter rest.

Email <bhc_lava_lamp@hotmail.com>

"Angel" by Sarah McLachlan

Musical notation for measures 51 and 52. Measure 51 is on a treble clef staff with a key signature of one sharp (F#) and a 3/4 time signature. It contains a melodic line starting with a quarter note F#4, followed by eighth notes G4, A4, B4, and a quarter rest. Measure 52 is on a bass clef staff with a key signature of one sharp (F#) and a 3/4 time signature. It contains a bass line starting with a quarter note F#2, followed by eighth notes G2, A2, B2, and a quarter rest.

Email <bhc_lava_lamp@hotmail.com>

"Angel" by Sarah McLachlan

Musical notation for measures 52 and 53. Measure 52 is on a treble clef staff with a key signature of one sharp (F#) and a 3/4 time signature. It contains a melodic line starting with a quarter note F#4, followed by eighth notes G4, A4, B4, and a quarter rest. Measure 53 is on a bass clef staff with a key signature of one sharp (F#) and a 3/4 time signature. It contains a bass line starting with a quarter note F#2, followed by eighth notes G2, A2, B2, and a quarter rest.

Email <bhc_lava_lamp@hotmail.com>

"Angel" by Sarah McLachlan

Musical notation for measures 53 and 54. Measure 53 is on a treble clef staff with a key signature of one sharp (F#) and a 3/4 time signature. It contains a melodic line starting with a quarter note F#4, followed by eighth notes G4, A4, B4, and a quarter rest. Measure 54 is on a bass clef staff with a key signature of one sharp (F#) and a 3/4 time signature. It contains a bass line starting with a quarter note F#2, followed by eighth notes G2, A2, B2, and a quarter rest.

Email <bhc_lava_lamp@hotmail.com>



54

"Angel" by Sarah McLachlan

Email <bhc_lava_lamp@hotmail.com>



55

"Angel" by Sarah McLachlan

Email <bhc_lava_lamp@hotmail.com>



56

"Angel" by Sarah McLachlan

Email <bhc_lava_lamp@hotmail.com>



57

"Angel" by Sarah McLachlan

Email <bhc_lava_lamp@hotmail.com>



58

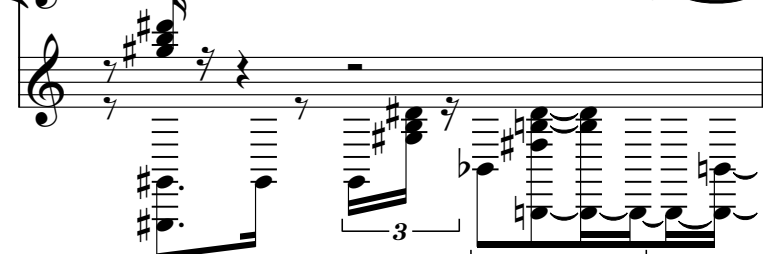
"Angel" by Sarah McLachlan

Email <bhc_lava_lamp@hotmail.com>



59

"Angel" by Sarah McLachlan



3

2

Email <bhc_lava_lamp@hotmail.com>

"Angel" by Sarah McLachlan

Musical notation for measures 60 and 61. Measure 60 is a single staff with a treble clef, a key signature of one sharp (F#), and a 7/8 time signature. It contains a melodic line with a half note, a quarter note, and a dotted quarter note. Measure 61 consists of two staves: the top staff continues the melody with eighth notes and a triplet of eighth notes, and the bottom staff shows the guitar accompaniment with chords and a triplet of eighth notes.

Email <bhc_lava_lamp@hotmail.com>

"Angel" by Sarah McLachlan

Musical notation for measures 61 and 62. Measure 61 continues the melody from the previous system. Measure 62 is a single staff with a treble clef, a key signature of one sharp (F#), and a 7/8 time signature, containing a melodic line with a half note and a quarter note.

Email <bhc_lava_lamp@hotmail.com>

"Angel" by Sarah McLachlan

Musical notation for measures 62 and 63. Measure 62 continues the melody. Measure 63 is a single staff with a treble clef, a key signature of one sharp (F#), and a 7/8 time signature, containing a melodic line with a half note and a quarter note.

Email <bhc_lava_lamp@hotmail.com>

"Angel" by Sarah McLachlan

Musical notation for measures 63 and 64. Measure 63 continues the melody with a triplet of eighth notes. Measure 64 consists of two staves: the top staff continues the melody with a triplet of eighth notes, and the bottom staff shows the guitar accompaniment with chords and a triplet of eighth notes.

Email <bhc_lava_lamp@hotmail.com>

"Angel" by Sarah McLachlan

Musical notation for measures 64 and 65. Measure 64 continues the melody with a triplet of eighth notes. Measure 65 is a single staff with a treble clef, a key signature of one sharp (F#), and a 7/8 time signature, containing a melodic line with a half note and a quarter note.

Email <bhc_lava_lamp@hotmail.com>

"Angel" by Sarah McLachlan

Musical notation for measures 65 and 66. Measure 65 continues the melody. Measure 66 consists of two staves: the top staff continues the melody with a triplet of eighth notes, and the bottom staff shows the guitar accompaniment with chords and a triplet of eighth notes.

Email <bhc_lava_lamp@hotmail.com>

"Angel" by Sarah McLachlan

66

Email <bhc_lava_lamp@hotmail.com>

"Angel" by Sarah McLachlan

67

Email <bhc_lava_lamp@hotmail.com>

"Angel" by Sarah McLachlan

69

Email <bhc_lava_lamp@hotmail.com>

"Angel" by Sarah McLachlan

70

Email <bhc_lava_lamp@hotmail.com>

"Angel" by Sarah McLachlan

71

Email <bhc_lava_lamp@hotmail.com>

"Angel" by Sarah McLachlan

72

Email <bhc_lava_lamp@hotmail.com>

"Angel" by Sarah McLachlan

Email <bhc_lava_lamp@hotmail.com>



73

This system shows the first measure of the piece, measure 73. It consists of two staves: a vocal line in treble clef and a piano accompaniment line in treble clef. The key signature has one sharp (F#) and the time signature is 3/4. The vocal line begins with a quarter rest, followed by a quarter note G4, a quarter note A4, and a quarter note B4. The piano accompaniment starts with a quarter rest, followed by a quarter note G3, a quarter note A3, and a quarter note B3.

"Angel" by Sarah McLachlan

Email <bhc_lava_lamp@hotmail.com>



74

This system shows the second measure of the piece, measure 74. The vocal line continues with a quarter note C5, a quarter note D5, and a quarter note E5. The piano accompaniment features a complex texture with multiple voices, including a prominent eighth-note accompaniment in the right hand.

"Angel" by Sarah McLachlan

Email <bhc_lava_lamp@hotmail.com>



75

This system shows the third measure of the piece, measure 75. The vocal line has a quarter rest, followed by a quarter note F#5, a quarter note G5, and a quarter note A5. The piano accompaniment includes a triplet of eighth notes in the right hand.

"Angel" by Sarah McLachlan

Email <bhc_lava_lamp@hotmail.com>



76

This system shows the fourth measure of the piece, measure 76. The vocal line continues with a quarter note B5, a quarter note C6, and a quarter note D6. The piano accompaniment features a complex texture with multiple voices, including a prominent eighth-note accompaniment in the right hand.

"Angel" by Sarah McLachlan

Email <bhc_lava_lamp@hotmail.com>



77

This system shows the fifth measure of the piece, measure 77. The vocal line has a quarter rest, followed by a quarter note E6, a quarter note F#6, and a quarter note G6. The piano accompaniment includes a triplet of eighth notes in the right hand.

"Angel" by Sarah McLachlan

Email <bhc_lava_lamp@hotmail.com>



78

This system shows the sixth measure of the piece, measure 78. The vocal line continues with a quarter note A6, a quarter note B6, and a quarter note C7. The piano accompaniment features a complex texture with multiple voices, including a prominent eighth-note accompaniment in the right hand.

"Angel" by Sarah McLachlan



This system shows the second part of measure 78. The vocal line continues with a quarter note D7, a quarter note E7, and a quarter note F#7. The piano accompaniment features a complex texture with multiple voices, including a prominent eighth-note accompaniment in the right hand.

79
Email <bhc_lava_lamp@hotmail.com>
"Angel" by Sarah McLachlan

80
Email <bhc_lava_lamp@hotmail.com>
"Angel" by Sarah McLachlan

81
Email <bhc_lava_lamp@hotmail.com>
"Angel" by Sarah McLachlan

82
Email <bhc_lava_lamp@hotmail.com>
"Angel" by Sarah McLachlan

83
Email <bhc_lava_lamp@hotmail.com>
"Angel" by Sarah McLachlan

84
Email <bhc_lava_lamp@hotmail.com>
"Angel" by Sarah McLachlan

Email <bhc_lava_lamp@hotmail.com>



85

This system shows the first measure of the piece. It consists of two staves: a treble clef staff with a key signature of one sharp (F#) and a 7/8 time signature, and a bass clef staff. The treble staff contains a melodic line starting with a quarter note F#, followed by eighth notes G# and A, and a quarter rest. The bass staff contains a bass line starting with a quarter note F#, followed by eighth notes G# and A, and a quarter rest.

"Angel" by Sarah McLachlan

Email <bhc_lava_lamp@hotmail.com>



86

This system shows the second measure. The treble staff continues the melody with a quarter note B, followed by eighth notes C and D, and a quarter rest. The bass staff continues the bass line with a quarter note B, followed by eighth notes C and D, and a quarter rest.

"Angel" by Sarah McLachlan

Email <bhc_lava_lamp@hotmail.com>



87

This system shows the third measure. The treble staff continues the melody with a quarter note E, followed by eighth notes F# and G, and a quarter rest. The bass staff continues the bass line with a quarter note E, followed by eighth notes F# and G, and a quarter rest.

"Angel" by Sarah McLachlan

Email <bhc_lava_lamp@hotmail.com>



88

This system shows the fourth measure. The treble staff continues the melody with a quarter note A, followed by eighth notes B and C, and a quarter rest. The bass staff continues the bass line with a quarter note A, followed by eighth notes B and C, and a quarter rest.

"Angel" by Sarah McLachlan

Email <bhc_lava_lamp@hotmail.com>



89

This system shows the fifth measure. The treble staff continues the melody with a quarter note B, followed by eighth notes C and D, and a quarter rest. The bass staff continues the bass line with a quarter note B, followed by eighth notes C and D, and a quarter rest.

"Angel" by Sarah McLachlan

Email <bhc_lava_lamp@hotmail.com>



90

This system shows the sixth measure. The treble staff continues the melody with a quarter note C, followed by eighth notes D and E, and a quarter rest. The bass staff continues the bass line with a quarter note C, followed by eighth notes D and E, and a quarter rest.

"Angel" by Sarah McLachlan



This system shows the second part of measure 90. The treble staff continues the melody with a quarter note F#, followed by eighth notes G# and A, and a quarter rest. The bass staff continues the bass line with a quarter note F#, followed by eighth notes G# and A, and a quarter rest.

Email <bhc_lava_lamp@hotmail.com>

"Angel" by Sarah McLachlan

Email <bhc_lava_lamp@hotmail.com>

"Angel" by Sarah McLachlan

Email <bhc_lava_lamp@hotmail.com>

"Angel" by Sarah McLachlan

Email <bhc_lava_lamp@hotmail.com>

"Angel" by Sarah McLachlan

Email <bhc_lava_lamp@hotmail.com>

"Angel" by Sarah McLachlan

Email <bhc_lava_lamp@hotmail.com>

"Angel" by Sarah McLachlan

Email <bhc_lava_lamp@hotmail.com>

"Angel" by Sarah McLachlan

97

"Angel" by Sarah McLachlan

98

"Angel" by Sarah McLachlan

100

"Angel" by Sarah McLachlan

101

"Angel" by Sarah McLachlan

102

Sarah McLachlan - Angel

Email <bhc_lava_lamp@hotmail.com>

♩ = 95,000145

47

51

55

59

63

67

71

75

78

82

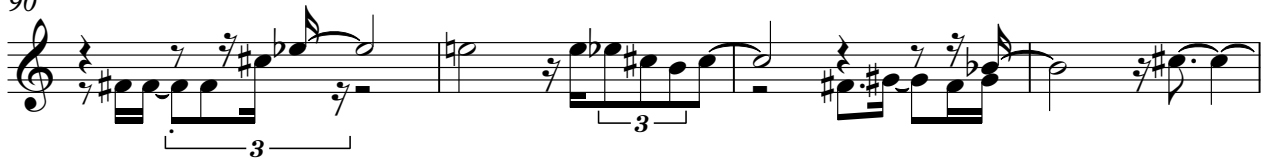
Detailed description: This image shows a musical score for the song 'Angel' by Sarah McLachlan. It consists of ten staves of music, numbered 47 through 82. The music is written in treble clef with a 4/4 time signature. The key signature is one flat (B-flat major). The tempo is marked as ♩ = 95,000145. The score includes various musical notations such as eighth notes, quarter notes, and sixteenth notes, along with rests and accidentals. There are several triplets indicated by a '3' over a bracket. The music is a single melodic line.

V.S.

86



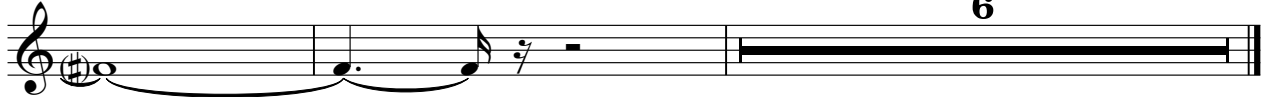
90



94



96



Sarah McLachlan - Angel

Sequenced by: Brian Cox

♩ = 95,000145

3

8

12

16

20

24

28

32

36

40

V.S.

44

57

"Angel" by Sarah McLachlan Sarah McLachlan - Angel

♩ = 95,000145

4
7
10
12
14
16
18
21
24

V.S.

"Angel" by Sarah McLachlan

26
28
30
32
34
36
38
40
42
44

46

48

50

52

54

55

57

59

61

63

V.S.

This page of a musical score for the song "Angel" by Sarah McLachlan covers measures 64 through 82. The score is written for guitar and includes a vocal line. The key signature is one sharp (F#), and the time signature is 4/4. The guitar part features a complex arrangement of chords and melodic lines, often using a capo. The vocal line consists of a single melodic line with lyrics. The score includes various musical notations such as treble and bass clefs, notes, rests, and dynamic markings. Measure numbers 64, 65, 67, 70, 72, 74, 76, 78, 80, and 82 are clearly marked on the left side of the page.

This page of a guitar score for the song "Angel" by Sarah McLachlan contains measures 84 through 101. The music is written in treble clef with a key signature of one sharp (F#) and a 3/4 time signature. The notation includes various chord voicings, melodic lines, and technical markings such as triplets and slurs. Measure numbers 84, 86, 88, 90, 93, 96, 99, and 101 are clearly marked at the beginning of their respective systems. The score concludes with a double bar line at the end of measure 101.