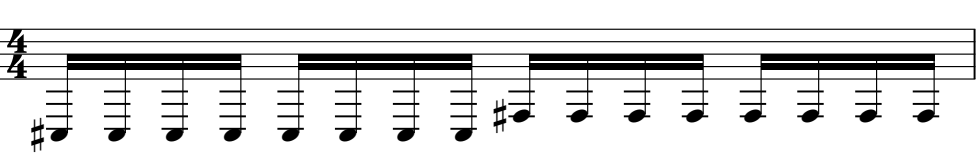


♩ = 98,000145

Percussion 

Synth Bass 

♩ = 98,000145

Pad 3 (Polysynth) 

2

Perc. 

S. Bass 

Pad 3 

3

Perc. 

S. Bass 

Pad 3 

4

Perc.

S. Bass

Pad 3

5

Perc.

S. Bass

Pad 3

6

Perc.

S. Bass

Pad 3

7

Perc.

S. Bass

Pad 3

The image displays a musical score for three instruments: Percussion (Perc.), S. Bass, and Pad 3, spanning four measures (4, 5, 6, and 7). Each measure is represented by a system of three staves. The Percussion staff uses a drum set notation with a snare drum (H) and various rhythmic patterns. The S. Bass staff is in a bass clef with a key signature of one sharp (F#) and features a sequence of eighth and quarter notes. The Pad 3 staff is in a treble clef and consists of a continuous sequence of eighth notes. The notation is consistent across all four measures, with the measure number (4, 5, 6, or 7) indicated at the top of each system.

8

Perc.

Perc. Organ

S. Bass

9

Perc.

S. Bass

11

Perc.

S. Bass

12

Perc.

Perc. Organ

S. Bass

13

Perc.

S. Bass

15

Perc.

S. Bass

Detailed description: This block contains the musical notation for measures 15. The top staff is labeled 'Perc.' and features a series of rhythmic patterns with stems and beams, indicating a complex percussive accompaniment. The bottom staff is labeled 'S. Bass' and shows a bass line with eighth and sixteenth notes, including a key signature change to one sharp (F#) in the middle of the measure.

16

Perc.

Perc. Organ

S. Bass

Detailed description: This block contains the musical notation for measure 16. It includes three staves. The top staff is labeled 'Perc.' and continues the rhythmic patterns from the previous measure. The middle staff is labeled 'Perc. Organ' and features a melodic line with eighth and sixteenth notes, including a key signature change to one sharp (F#) at the beginning. The bottom staff is labeled 'S. Bass' and continues the bass line from the previous measure.

# Percussion

♩ = 98,000145



3



5



7



9



11



13



15



# Percussive Organ

♩ = 98,000145

7 3

This musical notation is on a single staff in 4/4 time. It begins with a treble clef and a key signature of one sharp (F#). Measure 7 is a whole rest, with a '7' above it. Measure 8 contains a rhythmic pattern of eighth notes: F#4, G4, A4, B4, A4, G4, F#4, followed by a quarter rest. Measure 9 is another whole rest, with a '3' above it.

12

3

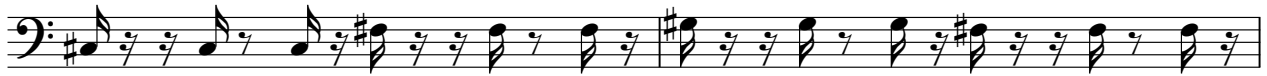
This musical notation is on a single staff in 4/4 time, continuing from the previous system. It begins with a treble clef and a key signature of one sharp (F#). Measure 10 contains a rhythmic pattern of eighth notes: F#4, G4, A4, B4, A4, G4, F#4, followed by a quarter rest. Measure 11 is a whole rest, with a '3' above it. Measure 12 contains a rhythmic pattern of eighth notes: F#4, G4, A4, B4, A4, G4, F#4, followed by a quarter rest.

# Synth Bass

♩ = 98,000145



3



5



7



9



11



13



15



Pad 3 (Polysynth)

♩ = 98,000145

The first musical staff is in treble clef with a 4/4 time signature. It contains two measures of music. The first measure consists of a series of eighth notes starting on G4 (one sharp) and ascending to D5. The second measure consists of a series of eighth notes starting on D5 and descending to G4. The notes are: G4, A4, B4, C5, D5, G4, A4, B4, C5, D5, G4, A4, B4, C5, D5.

3

The second musical staff is in treble clef with a 4/4 time signature. It contains two measures of music. The first measure consists of a series of eighth notes starting on G4 (one sharp) and ascending to D5. The second measure consists of a series of eighth notes starting on D5 and descending to G4. The notes are: G4, A4, B4, C5, D5, G4, A4, B4, C5, D5, G4, A4, B4, C5, D5.

5

The third musical staff is in treble clef with a 4/4 time signature. It contains two measures of music. The first measure consists of a series of eighth notes starting on G4 (one sharp) and ascending to D5. The second measure consists of a series of eighth notes starting on D5 and descending to G4. The notes are: G4, A4, B4, C5, D5, G4, A4, B4, C5, D5, G4, A4, B4, C5, D5.

7

9

The fourth musical staff is in treble clef with a 4/4 time signature. It contains two measures of music. The first measure consists of a series of eighth notes starting on G4 (one sharp) and ascending to D5. The second measure consists of a series of eighth notes starting on D5 and descending to G4. The notes are: G4, A4, B4, C5, D5, G4, A4, B4, C5, D5, G4, A4, B4, C5, D5.