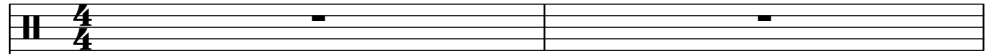


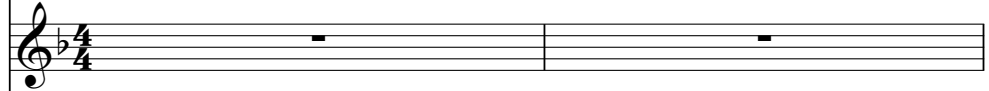
# Seiken Densetsu 2 - Tell a Strange Tale

♩ = 68,000076

Channel 1 (percussion)



Channel 2



Channel 3



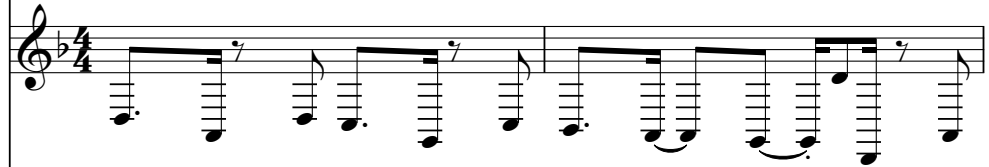
Channel 4



Channel 5



Channel 6



Channel 7



Channel 8



Channel 1 (percussion)

Musical staff for Channel 1 (percussion) showing a drum set icon and rhythmic notation.

Channel 2

Musical staff for Channel 2 showing a treble clef and melodic notation.

Channel 3

Musical staff for Channel 3 showing a treble clef and melodic notation.

Channel 4

Musical staff for Channel 4 showing a treble clef and melodic notation.

Channel 5

Musical staff for Channel 5 showing a treble clef and melodic notation.

Channel 6

Musical staff for Channel 6 showing a treble clef and melodic notation.

Channel 7

Musical staff for Channel 7 showing a treble clef and melodic notation.

Channel 8

Musical staff for Channel 8 showing a treble clef and melodic notation.



5 ♩ = 68,000076

Channel 1 (percussion)

Musical staff for Channel 1 (percussion) showing a drum set icon and rhythmic notation.

Channel 2

Musical staff for Channel 2 showing a treble clef and melodic notation.

Channel 3

Musical staff for Channel 3 showing a treble clef and melodic notation.

Channel 4

Musical staff for Channel 4 showing a treble clef and melodic notation.

Channel 5

Musical staff for Channel 5 showing a treble clef and melodic notation.

Channel 6

Musical staff for Channel 6 showing a treble clef and melodic notation.

Channel 7

Musical staff for Channel 7 showing a treble clef and melodic notation.

Channel 8

Musical staff for Channel 8 showing a treble clef and melodic notation.

6

Channel 1 (percussion)

Channel 2

Channel 3

Channel 4

Channel 5

Channel 6

Channel 7

Channel 8



7

Channel 1 (percussion)

Channel 2

Channel 3

Channel 4

Channel 5

Channel 6

Channel 7

Channel 8

Channel 1 (percussion)

Musical score for page 8, measures 1-4. Channel 1 (percussion) uses a drumstick icon and contains a rhythmic pattern of eighth notes with 'x' marks. Channels 2-8 are in treble clef with a key signature of one flat. Channel 2 has a complex rhythmic pattern with many beamed notes. Channel 3 has a melodic line with some accidentals. Channel 4 has a melodic line with a slur. Channel 5 has a sparse melodic line. Channel 6 has a melodic line with a slur. Channel 7 has a melodic line with a slur and accidentals. Channel 8 has a melodic line with a slur and accidentals.



Channel 1 (percussion)

Musical score for page 9, measures 5-8. Channel 1 (percussion) continues the rhythmic pattern. Channels 2-8 continue their respective melodic and rhythmic parts from the previous page, with some changes in phrasing and accidentals.

10

Channel 1 (percussion)

Channel 2

Channel 3

Channel 4

Channel 5

Channel 6

Channel 7

Channel 8



11

Channel 1 (percussion)

Channel 2

Channel 3

Channel 4

Channel 5

Channel 6

Channel 7

Channel 8

Channel 1 (percussion)

Channel 2

Channel 3

Channel 4

Channel 5

Channel 6

Channel 7

Channel 8



Channel 1 (percussion)

Channel 2

Channel 3

Channel 4

Channel 5

Channel 6

Channel 7

Channel 8

14

Channel 1 (percussion)

Musical score for page 14, measures 1-4. Channel 1 (percussion) uses a drum set notation with 'x' marks for snare and cymbal hits. Channels 2-8 are melodic lines in various staves, including guitar and bass clefs, with a key signature of one flat.



15

Channel 1 (percussion)

Musical score for page 15, measures 5-8. Channel 1 (percussion) continues with drum set notation. Channels 2-8 are melodic lines in various staves, including guitar and bass clefs, with a key signature of one flat.

Channel 1 (percussion)

Musical score for channels 1 through 8, measures 16 and 17. Channel 1 (percussion) shows a rhythmic pattern of eighth notes with 'x' marks. Channels 2-8 contain melodic and harmonic lines in various staves, including treble and bass clefs, with various note values and rests.



Channel 1 (percussion)

Musical score for channels 1 through 8, measures 18 and 19. Channel 1 (percussion) continues the rhythmic pattern. Channels 2-8 show more complex melodic and harmonic developments, with some channels featuring sixteenth-note runs and other rhythmic patterns.



Channel 1 (percussion)

Channel 2

Channel 3

Channel 4

Channel 5

Channel 6

Channel 7

Channel 8



Channel 1 (percussion)

Channel 2

Channel 3

Channel 4

Channel 5

Channel 6

Channel 7

Channel 8

Channel 1 (percussion)

Channel 2

Channel 3

Channel 4

Channel 5

Channel 6

Channel 7

Channel 8

Musical score for page 21, channels 1-8. Channel 1 (percussion) features a rhythmic pattern of eighth notes with 'x' marks. Channels 2-8 contain melodic lines in various staves, including treble and bass clefs, with various note values and accidentals.



Channel 1 (percussion)

Channel 2

Channel 3

Channel 4

Channel 5

Channel 6

Channel 7

Channel 8

Musical score for page 22, channels 1-8. Channel 1 (percussion) continues the rhythmic pattern. Channels 2-8 contain melodic lines, with Channel 5 showing a whole rest. The score includes various musical notations such as beams, slurs, and accidentals.

23 ♩ = 68,000076

Channel 1 (percussion)

Channel 2

Channel 3

Channel 4

Channel 5

Channel 6

Channel 7

Channel 8



24

Channel 1 (percussion)

Channel 2

Channel 3

Channel 4

Channel 5

Channel 6

Channel 7

Channel 8

Channel 1 (percussion)

Musical score for page 25, featuring eight channels. Channel 1 (percussion) uses a drumstick icon and contains a rhythmic pattern of eighth notes with 'x' marks. Channels 2-8 are in treble clef with a key signature of one flat. Channel 2 has a complex rhythmic pattern with many sixteenth notes. Channel 3 has a melodic line with some accidentals. Channel 4 has a melodic line with a sharp sign. Channel 5 has a sparse melodic line. Channel 6 has a melodic line with some accidentals. Channel 7 has a melodic line with some accidentals. Channel 8 has a melodic line with some accidentals.



Channel 1 (percussion)

Musical score for page 26, featuring eight channels. Channel 1 (percussion) uses a drumstick icon and contains a rhythmic pattern of eighth notes with 'x' marks. Channels 2-8 are in treble clef with a key signature of one flat. Channel 2 has a complex rhythmic pattern with many sixteenth notes. Channel 3 has a melodic line with some accidentals. Channel 4 has a melodic line with some accidentals. Channel 5 has a sparse melodic line. Channel 6 has a melodic line with some accidentals. Channel 7 has a melodic line with some accidentals. Channel 8 has a melodic line with some accidentals.

27

Channel 1 (percussion)

Channel 2

Channel 3

Channel 4

Channel 5

Channel 6

Channel 7

Channel 8



28

Channel 1 (percussion)

Channel 2

Channel 3

Channel 4

Channel 5

Channel 6

Channel 7

Channel 8

Channel 1 (percussion)

Channel 2

Channel 3

Channel 4

Channel 5

Channel 6

Channel 7

Channel 8



Channel 1 (percussion)

Channel 2

Channel 3

Channel 4

Channel 5

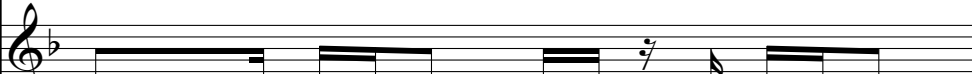
Channel 6

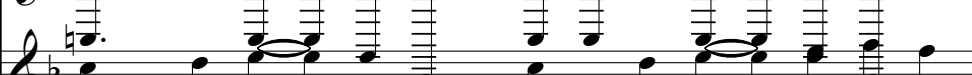
Channel 7

Channel 8

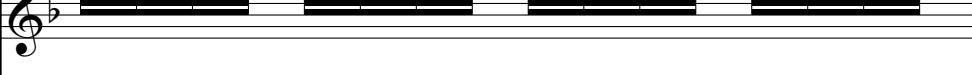
31


Channel 1 (percussion) 

Channel 2 

Channel 3 

Channel 4 

Channel 5 

Channel 6 

Channel 7 

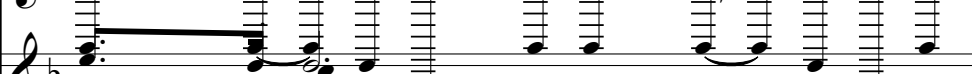
Channel 8 

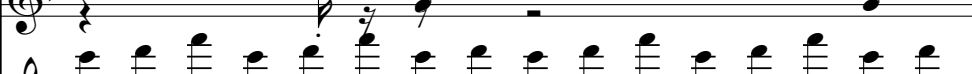



32


Channel 1 (percussion) 

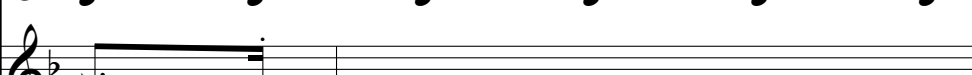
Channel 2 

Channel 3 

Channel 4 

Channel 5 

Channel 6 

Channel 7 

Channel 8 

Channel 1 (percussion)

Musical score for page 33, channels 1-8. Channel 1 (percussion) uses a drumstick icon and contains a rhythmic pattern of eighth and sixteenth notes with 'x' marks. Channels 2-8 are in treble clef with a key signature of one flat. Channel 2 has a complex melodic line with many beamed notes. Channel 3 features a melodic line with some slurs. Channel 4 is a steady eighth-note accompaniment. Channel 5 is a steady eighth-note accompaniment. Channel 6 has a melodic line with some slurs. Channel 7 has a melodic line with some slurs. Channel 8 is a steady eighth-note accompaniment.



Channel 1 (percussion)

Musical score for page 34, channels 1-8. Channel 1 (percussion) uses a drumstick icon and contains a rhythmic pattern of eighth and sixteenth notes with 'x' marks. Channels 2-8 are in treble clef with a key signature of one flat. Channel 2 has a complex melodic line with many beamed notes. Channel 3 features a melodic line with some slurs. Channel 4 is a steady eighth-note accompaniment. Channel 5 is a steady eighth-note accompaniment. Channel 6 has a melodic line with some slurs. Channel 7 has a melodic line with some slurs. Channel 8 is a steady eighth-note accompaniment.



35

Channel 1 (percussion)

Musical score for channels 1-8 on page 35. Channel 1 (percussion) features a rhythmic pattern of eighth notes. Channels 2, 3, 4, 6, and 8 contain melodic lines with various note values and rests. Channel 5 is mostly silent. Channel 7 contains a few notes.



37

Channel 1 (percussion)

Musical score for channels 1-8 on page 37. Channel 1 (percussion) features a rhythmic pattern with 'x' marks indicating specific sounds. Channels 2, 3, 4, 6, and 8 contain melodic lines. Channel 5 is mostly silent.

Channel 1 (percussion)

Musical score for page 38, featuring eight channels. Channel 1 (percussion) uses a drum set icon and contains a rhythmic pattern of eighth and sixteenth notes with 'x' marks. Channels 2-8 are in treble clef with a key signature of one flat (Bb). Channel 2 has a melodic line with slurs and accents. Channel 3 has a bass line with a long note and a slur. Channel 4 has a bass line with a flat sign and a slur. Channel 5 has a bass line with a flat sign and a slur. Channel 6 has a melodic line with slurs and accents. Channel 7 has a bass line with a long note and a slur. Channel 8 has a bass line with a flat sign and a slur.



Channel 1 (percussion)

Musical score for page 39, featuring eight channels. Channel 1 (percussion) uses a drum set icon and contains a rhythmic pattern of eighth and sixteenth notes with 'x' marks. Channels 2-8 are in treble clef with a key signature of one flat (Bb). Channel 2 has a melodic line with slurs and accents. Channel 3 has a bass line with a slur. Channel 4 has a bass line with a slur. Channel 5 has a bass line with a slur. Channel 6 has a melodic line with a slur. Channel 7 has a melodic line with a slur. Channel 8 has a bass line with a slur.

Channel 1 (percussion)

Musical notation for Channel 1 (percussion) on a single staff. It features a series of rhythmic patterns with 'x' marks indicating specific notes or rests.

Channel 2

Musical notation for Channel 2 on a single staff in treble clef with a key signature of one flat. It contains a sequence of eighth and sixteenth notes with various articulations.

Channel 3

Musical notation for Channel 3 on a single staff in treble clef with a key signature of one flat. It features a melodic line with a long slur over the first few notes.

Channel 4

Musical notation for Channel 4 on a single staff in treble clef with a key signature of one flat. It shows a melodic line with a sharp sign above the first note and a slur.

Channel 5

Musical notation for Channel 5 on a single staff in treble clef with a key signature of one flat. It contains a few notes at the beginning of the staff, followed by a rest.

Channel 6

Musical notation for Channel 6 on a single staff in treble clef with a key signature of one flat. It features a melodic line with a long slur over the first few notes.

Channel 7

Musical notation for Channel 7 on a single staff in treble clef with a key signature of one flat. It features a melodic line with a long slur over the first few notes.

Channel 8

Musical notation for Channel 8 on a single staff in treble clef with a key signature of one flat. It shows a melodic line with a sharp sign above the first note and a slur.

Channel 1 (percussion)

Seiken Densetsu 2 - Tell a Strange Tale

♩ = 68,000076 Seiken Densetsu 2 - Tell a Strange Tale



6



8



10



12



14



16



19



21



23 ♩ = 68,000076



V.S.

2

Channel 1 (percussion)

25



# Seiken Densetsu 2 - Tell a Strange Tale

♩ = 68,000/76 Seiken Densetsu 2 - Tell a Strange Tale 76

The image displays a musical score for a guitar channel, consisting of 12 staves of music. The score is written in a single system with a 4/4 time signature and a key signature of one flat (B-flat). The tempo is marked as 68,000/76. The music begins with a whole rest on the first staff, followed by a series of eighth and sixteenth notes across the subsequent staves. The notation includes various rhythmic values, accidentals (sharps and flats), and slurs. The score concludes with a double bar line and a final sharp sign on the twelfth staff.

V.S.

25

27

29

31

33

36

38

39

♩ = 68,000076

4

7

10

13

16

22

25

28

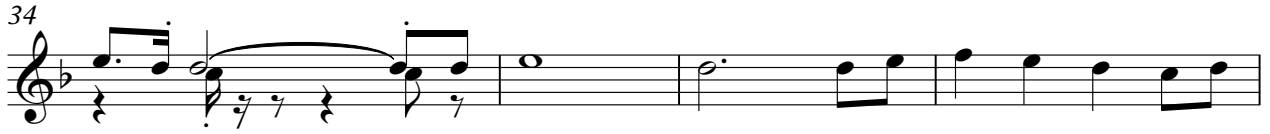
31

V.S.



2

Channel 3



♩ = 68,000076

4 ♩ = 68,000076

7

10

13

15

17

20 ♩ = 68,000076

24

27

2

Channel 4

30

Musical notation for measures 30 and 31. Measure 30 contains a melodic line with eighth notes and a slur. Measure 31 contains a series of beamed eighth notes.

32

Musical notation for measures 32 and 33. Both measures consist of continuous beamed eighth notes.

34

Musical notation for measures 34 and 35. Measure 34 contains beamed eighth notes. Measure 35 contains beamed eighth notes followed by a quarter note.

37

Musical notation for measures 37 and 38. Measure 37 contains beamed eighth notes. Measure 38 contains a half note, a quarter note, and a melodic line with eighth notes.

♩ = 68,000076

5 ♩ = 68,000076

9

13

15

18

23 ♩ = 68,000076

27

31

33



♩ = 68,000076

4

7

10

13

16

19

22

25

28

V.S.

31



34



37



39



# Seiken Densetsu 2 - Tell a Strange Tale

Channel 7

♩ = 68,000076

4 ♩ = 68,000076

7

10

13

16

22 ♩ = 68,000076

25

28

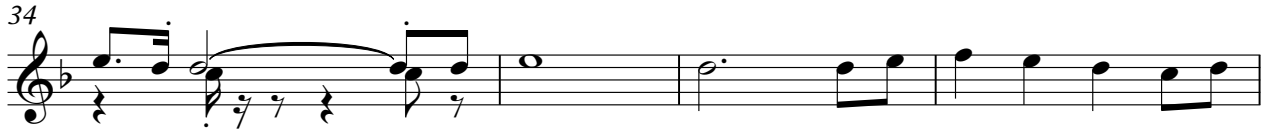
31

V.S.



2

Channel 7



♩ = 68,000075

4 ♩ = 68,000076

7

10

13

15

17

21 ♩ = 68,000076

25

28

V.S.

2

Channel 8

31

33

35

38