

Silverchair - Freak

♩ = 120,000000

guitar 1

effects for grt 1

effects for grt 1

Detailed description: This system contains three staves of guitar tablature. The top staff is for 'guitar 1', the middle for 'effects for grt 1', and the bottom for another 'effects for grt 1'. Each staff has three lines representing guitar strings (E, B, G for the top line, D, A, E for the middle, and E, B, A for the bottom). The first staff has fret numbers: 2, 0, 2, 2, 2 in the first measure; 2, 2, 2, 0, 0, 0 in the second; and 2, 2, 2, 0, 0, 0 in the third. The second and third staves have fret numbers: 5 in the first measure; 0, 0, 0 in the second; and 5, 5, 5 in the third.



3

drums

guitar 1

effects for grt 1

effects for grt 1

Detailed description: This system contains four staves. The top staff is for 'drums' with a 3-measure rest followed by a triplet of eighth notes. The guitar staves (guitar 1 and two effects tracks) have the same fret numbers as the first system: 2, 0, 2, 2, 2; 2, 2, 2, 0, 0, 0; and 5; 0, 0, 0; 5, 5, 5.



5

drums

guitar 1

effects for grt 1

effects for grt 1

bass

Detailed description: This system contains five staves. The top staff is for 'drums' with a 5-measure rest followed by a rhythmic pattern of eighth notes. The guitar staves (guitar 1 and two effects tracks) have the same fret numbers as the first system: 2, 0, 2, 2, 2; 2, 2, 2, 0, 0, 0; and 5; 0, 0, 0; 5, 5, 5. The bottom staff is for 'bass' with a bass clef and a rhythmic pattern of eighth notes.

7

drums

guitar 1

effects for grt 1

effects for grt 1

bass



9

drums

vocals

guitar 1

effects for grt 1

effects for grt 1

bass

11

drums

vocals

guitar 1

effects for grt 1

effects for grt 1

bass

guitar 1 TAB: 2 0 2 2 2 2 2 2 2 0 0 0 0 0 0

effects for grt 1 TAB: 3 2 2 0 2 2 2 2 2 2 2 2 0 0 0 0

effects for grt 1 TAB: 0 2 3 0 0 2 2 2 2 2 2 2 2 2 0 0 0 0



13

drums

vocals

guitar 1

effects for grt 1

effects for grt 1

bass

guitar 1 TAB: 2 0 2 2 2 2 2 2 2 0 0 0 0 0 0

effects for grt 1 TAB: 2 2 0 2 2 2 2 2 2 2 2 2 0 0 0 0

effects for grt 1 TAB: 0 2 0 0 0 2 2 2 2 2 2 2 2 2 0 0 0 0

15

drums

vocals

guitar 1

effects for grt 1

effects for grt 1

bass



17

drums

vocals

guitar 1

effects for grt 1

effects for grt 1

bass

19

drums

vocals

guitar 1

effects for grt 1

effects for grt 1

bass

guitar 1 tablature (measures 19-20):

T	0	3	4	4	0	0	0	3	4	4	1	2
A	0	3	4	4	0	0	0	3	4	4	1	2
B	0	1	2	2	0	0	1	2	2	4	0	0
	5				5	5	5					

effects for grt 1 (measures 19-20):

T	0	3	4	4	0	0	0	3	4	4	1	2
A	0	3	4	4	0	0	0	3	4	4	1	2
B	0	1	2	2	0	0	1	2	2	4	0	0
	5				5	5	5					

effects for grt 1 (measures 19-20):

T	4	0	3	3	4	4	4	0	0	0	0	3	3	4	4	4	1	2
A	4	0	3	3	4	4	4	0	0	0	0	3	3	4	4	4	1	2
B	2	5	1	1	2	2	2	5	5	5	5	1	1	2	2	2	4	0



21

drums

vocals

guitar 1

effects for grt 1

effects for grt 1

bass

guitar 1 tablature (measures 21-22):

T	0	3	4	4	0	0	0	3	4	4	4	4	4
A	0	3	4	4	0	0	0	3	4	4	4	4	4
B	0	1	2	2	0	0	1	2	2	2	2	2	2
	5				5	5	5						

effects for grt 1 (measures 21-22):

T	0	3	4	4	0	0	0	3	4	4	4	4	4
A	0	3	4	4	0	0	0	3	4	4	4	4	4
B	0	1	2	2	0	0	1	2	2	2	2	2	2
	5				5	5	5						

effects for grt 1 (measures 21-22):

T	2	0	3	3	4	4	4	0	0	0	0	3	3	4	4	4	4	4
A	2	0	3	3	4	4	4	0	0	0	0	3	3	4	4	4	4	4
B	0	0	1	1	2	2	2	5	5	5	5	1	1	2	2	2	2	2

23

drums

vocals

guitar 1

T	0	3	4	4	0	0	0	3	4	4	4	4
A	0	3	4	4	0	0	0	3	4	4	4	4
B	0	1	2	2	0	0	0	1	2	2	2	2
	5				5	5	5					

effects for grt 1

T	0	3	4	4	0	0	0	3	4	4	4	4
A	0	3	4	4	0	0	0	3	4	4	4	4
B	0	1	2	2	0	0	0	1	2	2	2	2
	5				5	5	5					

effects for grt 1

T	4	0	3	3	4	4	4	0	0	0	0	3	3	4	4	4	4	4
A	4	0	3	3	4	4	4	0	0	0	0	3	3	4	4	4	4	4
B	2	5	1	1	2	2	2	0	0	0	0	1	1	2	2	2	2	2
								5	5	5	5							

bass



25

drums

vocals

guitar 1

T	0	0	0	0	0	0	0	3	0	2	2	2	2
A	0	0	0	0	0	0	0	2	0	2	2	2	2
B	0	0	0	0	0	0	0	0	0	0	0	0	0
								5					

effects for grt 1

T								2	0	2	2	2	2
A								2	0	2	2	2	2
B								0	0	0	0	0	0
								5					

effects for grt 1

T	4							2	2	0	0	2	2	2	2	2	2
A	4							2	2	0	0	2	2	2	2	2	2
B	2							0	0	5	5	0	0	0	0	0	0

bass

28

drums

vocals

guitar 1

effects for grt 1

effects for grt 1

bass



30

drums

guitar 1 clean

more effects

more effects

vocals

guitar 1

effects for grt 1

effects for grt 1

bass

32

drums

guitar 1 clean

more effects

more effects

vocals

bass



34

drums

guitar 1 clean

more effects

more effects

vocals

bass

36

drums

guitar 1 clean

more effects

more effects

vocals

bass



38

drums

guitar 1 clean

more effects

more effects

vocals

guitar 1

effects for grt 1

effects for grt 1

bass

40

drums

vocals

guitar 1

effects for grt 1

effects for grt 1

bass



42

drums

vocals

guitar 1

effects for grt 1

effects for grt 1

bass

44

drums

vocals

guitar 1

effects for grt 1

effects for grt 1

bass



46

drums

vocals

guitar 1

effects for grt 1

effects for grt 1

bass

48

drums

vocals

guitar 1

effects for grt 1

effects for grt 1

bass

guitar 1 fret numbers: 0 0 3 4 4 4 4 0 3 4 4 0

guitar 1 effect 1 fret numbers: 0 0 3 4 4 4 4 0 3 4 4 0

guitar 1 effect 2 fret numbers: 0 0 3 3 4 4 4 4 4 0 3 3 4 4 4 0



50

drums

vocals

guitar 1

effects for grt 1

effects for grt 1

bass

guitar 1 fret numbers: 0 0 3 4 4 1 2 0 3 4 4 0

guitar 1 effect 1 fret numbers: 0 0 3 4 4 1 2 0 3 4 4 0

guitar 1 effect 2 fret numbers: 0 0 3 3 4 4 4 1 2 2 0 3 3 4 4 4 0

52

drums

vocals

guitar 1

effects for grt 1

effects for grt 1

bass



54

drums

vocals

guitar 1

effects for grt 1

effects for grt 1

bass

57

drums

vocals

guitar 1

bass



58

drums

vocals

guitar 1

effects for grt 1

effects for grt 1

bass



59 15

drums

vocals

guitar 1

T	0	0	0	0	4	4	4	4	4	4	4	4	4	0	0	0	0	4
A	0	0	0	0	4	4	4	4	4	4	4	4	4	0	0	0	0	4
B	3	3	3	3	2	2	2	2	2	2	2	2	2	3	3	3	3	2

effects for grt 1

T						2												
A																		
B																		

effects for grt 1

T						2												
A																		
B																		

bass

62

drums

vocals

guitar 1

T						2												0
A	4	4	4	4	4	4	4	4	4	4	4	4	4	4	4	4	4	0
B	2	2	2	2	2	2	2	2	2	2	2	2	2	2	2	2	2	3

bass

65

drums

vocals

guitar 1

effects for grt 1

effects for grt 1

bass



68

drums

vocals

guitar 1

effects for grt 1

effects for grt 1

bass

70

drums

vocals

guitar 1

effects for grt 1

effects for grt 1

bass



72

drums

vocals

guitar 1

effects for grt 1

effects for grt 1

bass

74

drums

vocals

guitar 1

effects for grt 1

effects for grt 1

bass



76

drums

vocals

guitar 1

effects for grt 1

effects for grt 1

bass

78

drums

vocals

guitar 1

effects for grt 1

effects for grt 1

bass



80

drums

vocals

guitar 1

effects for grt 1

effects for grt 1

bass

82

drums

guitar 1

effects for grt 1

effects for grt 1

bass

Detailed description: This system covers measures 82 and 83. The drums staff shows a complex pattern with many beamed notes and accents. The guitar 1 staff has two TAB lines: the top line shows fret numbers (3, 3, 3, 3, 3, 3, 0, 0) and the bottom line shows fret numbers (1, 1, 1, 1, 1, 1, 3, 3). The effects for guitar 1 staves have two TAB lines: the top line shows fret numbers (5, 5, 5, 5, 5, 5, 8, 8, 8, 8, 8, 8, 2, 2) and the bottom line shows fret numbers (2, 2, 2, 2, 2, 2, 2, 2, 2, 2, 2, 2, 2, 2). The bass staff shows a simple melodic line with quarter notes.

84

drums

guitar 1

effects for grt 1

effects for grt 1

bass

Detailed description: This system covers measures 84 and 85. The drums staff continues the pattern from the previous system. The guitar 1 staff has two TAB lines: the top line shows fret numbers (3, 3, 3, 3, 3, 3, 0, 0) and the bottom line shows fret numbers (1, 1, 1, 1, 1, 1, 3, 3). The effects for guitar 1 staves have two TAB lines: the top line shows fret numbers (5, 5, 5, 5, 5, 5, 8, 8, 8, 8, 8, 8, 2, 2) and the bottom line shows fret numbers (2, 2, 2, 2, 2, 2, 2, 2, 2, 2, 2, 2, 2, 2). The bass staff shows a simple melodic line with quarter notes.

86

drums

guitar 1

effects for grt 1

effects for grt 1

bass

Detailed description: This system covers measures 86 and 87. The drums staff continues the pattern. The guitar 1 staff has two TAB lines: the top line shows fret numbers (3, 3, 3, 3, 3, 3, 0, 0) and the bottom line shows fret numbers (1, 1, 1, 1, 1, 1, 3, 3). The effects for guitar 1 staves have two TAB lines: the top line shows fret numbers (7, 7, 7, 7, 7, 7, 7, 7, 7, 7, 7, 7, 7, 7) and the bottom line shows fret numbers (2, 2, 2, 2, 2, 2, 2, 2, 2, 2, 2, 2, 2, 2). The bass staff shows a simple melodic line with quarter notes.

88

drums

guitar 1

effects for grt 1

effects for grt 1

bass



90

drums

vocals

guitar 1

bass



93

drums

vocals

guitar 1

bass

96

drums

vocals

guitar 1

effects for grt 1

effects for grt 1

bass



99

drums

vocals

guitar 1

effects for grt 1

effects for grt 1

bass

101

drums

vocals

guitar 1

effects for grt 1

effects for grt 1

bass



103

drums

vocals

guitar 1

effects for grt 1

effects for grt 1

bass

105

drums

guitar 1

effects for grt 1

effects for grt 1

bass

105

drums

guitar 1

effects for grt 1

effects for grt 1

bass

Silverchair - Freak

drums

♩ = 120,000000
3

8

12

16

19

22

26

31

35

39

V.S.

The image shows a drum score for the song 'Freak' by Silverchair. It consists of ten staves of music, each starting with a measure number (4, 8, 12, 16, 19, 22, 26, 31, 35, 39). The score is written in 4/4 time with a tempo of 120 BPM. The notation includes various drum symbols: solid circles for bass drum, open circles for snare, and 'x' marks for cymbals. There are also triplet markings and dynamic markings like 'mf' and 'f'. The score ends with 'V.S.' (Verso).

drums

This image shows a drum score for measures 44 through 77. The notation is written on a grand staff with two staves per system. The upper staff uses standard drum notation with stems and heads, while the lower staff uses a simplified notation with stems and 'x' marks for cymbals. Measure numbers are placed at the beginning of each system. The score includes various rhythmic patterns, including eighth and sixteenth notes, rests, and complex syncopated rhythms. Some measures feature triplets, indicated by a '3' over a group of notes. The notation is clear and professional, typical of a music manuscript.

81

drums

84

87

90

94

98

102

105

$\text{♩} = 117$

4

Silverchair - Freak

guitar 1 clean

♩ = 120,000000
30

Tab notation for measures 27-30:
Measure 27: Treble clef, strings D, A, G, D, A, D. Measure 28: Treble clef, strings D, A, G, D, A, D. Measure 29: Treble clef, strings D, A, G, D, A, D. Measure 30: Treble clef, strings D, A, G, D, A, D.

34

Tab notation for measures 31-34:
Measure 31: Treble clef, strings D, A, G, D, A, D. Measure 32: Treble clef, strings D, A, G, D, A, D. Measure 33: Treble clef, strings D, A, G, D, A, D. Measure 34: Treble clef, strings D, A, G, D, A, D.

38

66 **6**

Tab notation for measures 35-38:
Measure 35: Treble clef, strings D, A, G, D, A, D. Measure 36: Treble clef, strings D, A, G, D, A, D. Measure 37: Treble clef, strings D, A, G, D, A, D. Measure 38: Treble clef, strings D, A, G, D, A, D.

Silverchair - Freak

more effects

♩ = 120,000000
30

A guitar tab for measures 28-31. The strings are labeled D, A, G, D, A, D from top to bottom. Measure 28 has a thick black bar across all strings. Measure 29 has a triplet of 3s on the D string, a 0 on the A string, and a triplet of 3s on the G string. Measure 30 has 0s on all strings. Measure 31 has a triplet of 3s on the D string, a 0 on the A string, and a triplet of 3s on the G string.

34

A guitar tab for measures 32-35. The strings are labeled T, A, B from top to bottom. Measure 32 has 0s on all strings. Measure 33 has a triplet of 3s on the T string, a 0 on the A string, and a triplet of 3s on the B string. Measure 34 has 0s on all strings. Measure 35 has a triplet of 3s on the T string, a 0 on the A string, and a triplet of 3s on the B string.

38

♩ = 120,000000
66 **6**

A guitar tab for measures 36-38. The strings are labeled T, A, B from top to bottom. Measure 36 has 0s on all strings. Measure 37 has a thick black bar across all strings. Measure 38 has a thick black bar across all strings.

Silverchair - Freak

more effects

♩ = 120,000000
30

Tab for measures 29-32. Measure 29: Thick black bar on B string. Measure 30: B string triplet (3), A string triplet (3), B string triplet (3), A string triplet (3), B string triplet (3), A string triplet (3), B string triplet (3), A string triplet (3). Measure 31: B string triplet (3), A string triplet (3), B string triplet (3), A string triplet (3), B string triplet (3), A string triplet (3), B string triplet (3), A string triplet (3). Measure 32: B string triplet (3), A string triplet (3), B string triplet (3), A string triplet (3), B string triplet (3), A string triplet (3), B string triplet (3), A string triplet (3).

33

Tab for measures 33-35. Measure 33: Thick black bar on B string. Measure 34: B string triplet (3), A string triplet (3), B string triplet (3), A string triplet (3), B string triplet (3), A string triplet (3), B string triplet (3), A string triplet (3). Measure 35: B string triplet (3), A string triplet (3), B string triplet (3), A string triplet (3), B string triplet (3), A string triplet (3), B string triplet (3), A string triplet (3).

36

Tab for measures 36-38. Measure 36: Thick black bar on B string. Measure 37: B string triplet (3), A string triplet (3), B string triplet (3), A string triplet (3), B string triplet (3), A string triplet (3), B string triplet (3), A string triplet (3). Measure 38: B string triplet (3), A string triplet (3), B string triplet (3), A string triplet (3), B string triplet (3), A string triplet (3), B string triplet (3), A string triplet (3).

39

♩ = 120,000000
65 **6**

Tab for measures 39-40. Measure 39: Thick black bar on B string. Measure 40: Thick black bar on B string.

Silverchair - Freak

vocals

♩ = 120,000000

8

13

19

25

31

36

41

47

52

58

2

vocals

64

69

75

80

92

97

102

$\text{♩} = 117$
6

Silverchair - Freak

guitar 1

♩ = 120,000000

E																			
T																			
A	2	0	2	2	2		2	2	2	0	0	0	3	2	0	2	2	2	2
B	2	0	2	2	2		2	2	2	0	0	0	2	0	2	2	2	2	2
E	0		0	0	0		0	0	0				0	0	0	0	0	0	0
A		5							5	5	5			5				5	5

5

T																			
A	2	0	2	2	2		2	2	2	0	0	0	2	0	2	2	2	2	2
B	2	0	2	2	2		2	2	2	0	0	0	2	0	2	2	2	2	2
E	0		0	0	0		0	0	0				0	0	0	0	0	0	0
A		5							5	5	5			5				5	5

10

T																			
A	2	2	2	0	0	0	2	0	2	2	2		2	2	2	0	0	0	2
B	2	2	2	0	0	0	2	0	2	2	2		2	2	2	0	0	0	2
E	0		0				0		0	0	0		0		0			0	0
A				5	5	5		5							5	5	5		5

14

T																			
A	2	2	2	0	0	0	2	0	2	2	2		2	2	2	0	0	0	2
B	2	2	2	0	0	0	2	0	2	2	2		2	2	2	0	0	0	2
E	0		0				0		0	0	0		0		0			0	0
A				5	5	5		5							5	5	5		5

18

T																			
A	0	0	3	4	4	4	4	0	3	4	4	0	0	0	3	4	4	1	2
B	0	0	3	4	4	4	4	0	3	4	4	0	0	0	3	4	4	1	2
E			1	2	2	2	2		1	2	2				1	2	2	4	0
A		5	5					5				5	5	5				5	5

22

T																			
A	0	0	3	4	4	4	4	0	3	4	4	0	0	0	3	4	4	4	4
B	0	0	3	4	4	4	4	0	3	4	4	0	0	0	3	4	4	4	4
E			1	2	2	2	2		1	2	2				1	2	2	2	2
A		5	5					5				5	5	5				5	5

27

T																			
A	3		0	2	2	2		2	2	2	0	2	3		2	0	2	2	2
B	2		0	2	2	2		2	2	2	0	2	3		2	0	2	2	2
E	0			0	0	0		0	0	0		0	1		0		0	0	0
A			5								5					5			5

30

T																			
A	2		2	2	0	2	3	-----											
B	2		2	2	0	2	3	-----											
E	0		0	0		0	1	-----											
A					5			-----											

T																	
A	2	0	2	2	2	2	2	2	2	0	0	0	2	0	2	2	2
B	2	0	2	2	2	2	2	2	2	2	2	0	0	0	2	2	2
	0	0	0	0	0	0	0	0	0	0	0	0	0	0	0	0	0
		5					5	5	5		5				5	5	5

44

T																		
A	2	2	2	0	0	0	2	0	2	2	2	2	2	2	2	0	0	0
B	2	2	2	0	0	0	2	0	2	2	2	2	2	2	2	0	0	0
	0	0	0				0	5	0	0	0	0	0	0	0	0	0	0
				5	5	5						5	5	5		5		5

48

T																			
A	0	0	3	4	4	4	4	4	0	3	4	4	0	0	0	3	4	4	0
B	0	0	3	4	4	4	4	4	0	3	4	4	0	0	0	3	4	4	0
			1	2	2	2	2	2		1	2	2				1	2	2	
	5	5							5			5	5	5		5			5

52

T																			
A	0	0	3	4	4	4	4	4	0	3	4	4	0	0	0	3	4	4	0
B	0	0	3	4	4	4	4	4	0	3	4	4	0	0	0	3	4	4	0
			1	2	2	2	2	2		1	2	2				1	2	2	
	5	5							5			5	5	5		5			5

56

T																			
A	4	4	4	4	4	4	4	4	0	3	4	4	0	0	0	3	4	4	0
B	4	4	4	4	4	4	4	4	0	3	4	4	0	0	0	3	4	4	0
										1	2	2				1	2	2	
	5	5							5			5	5	5		5			5

60

T																			
A	4	4	4	4	4	4	4	4	0	0	0	0	4	4	4	4	4	4	4
B	4	4	4	4	4	4	4	4	0	0	0	0	4	4	4	4	4	4	4
	2	2	2	2	2	2	2	2	3	3	3	3	2	2	2	2	2	2	2

65

T																						
A	0	0	2	2	2	2	2	2	2	2	2	2	0	0	0	2	2	2	0	0	0	0
B	3	3	2	2	2	2	2	2	2	2	2	2	0	0	0	2	2	2	0	0	0	0
	1																					
			5						0	0	0		5	5	5		5					

70

T																					
A	2	0	2	2	2	2	2	2	2	2	2	2	0	0	0	2	2	2	0	2	3
B	2	0	2	2	2	2	2	2	2	2	2	2	0	0	0	2	2	2	0	2	3
	0	0	0	0	0	0	0	0	0	0	0	0	0	0	0	0	0	0	0	0	1
		5							5	5	5		5						5		

74

T																																		
A	3	3	3	3	3	3	3	3	0	0	0	0	0	0	0	3	3	3	3	3	3	3	3	0	0	0	0	0	0	0	0	0	0	
B	1	1	1	1	1	1	1	1	5	5	5	5	5	5	5	1	1	1	1	1	1	1	1	1	5	5	5	5	5	5	5	5	5	5

78

T																																			
A	3	3	3	3	3	3	3	3	0	0	0	0	0	0	0	3	3	3	3	3	3	3	3	0	0	0	0	0	0	0	0	0	0		
B	1	1	1	1	1	1	1	1	5	5	5	5	5	5	5	1	1	1	1	1	1	1	1	5	5	5	5	5	5	5	5	5	5	5	5

Silverchair - Freak

effects for grt 1

♩ = 120,000000

E																			
T																			
B																			
A	2	0	2	2	2		2	2	2	0	0	0	3	2	0	2	2	2	
D	2	0	2	2	2		2	2	2	0	0	0	2	2	0	2	2	2	
G	2	0	2	2	2		2	2	2	0	0	0	2	2	0	2	2	2	
B	0	0	0	0	0		0	0	0	0	0	0	0	0	0	0	0	0	
E																			
A		5							5	5	5			5				5	5

5

T																			
A	2	0	2	2	2		2	2	2	0	0	0	3	2	0	2	2	2	
B	2	0	2	2	2		2	2	2	0	0	0	2	2	0	2	2	2	
	0	0	0	0	0		0	0	0	0	0	0	0	0	0	0	0	0	
		5							5	5	5			5				5	5

10

T																			
A	2	2	2	0	0	0	3	0	2	2	2		2	2	2	0	0	0	
B	2	2	2	0	0	0	2	0	2	2	2		2	2	2	0	0	0	
	0	0	0				0	0	0	0	0		0	0	0	0	0	0	
				5	5	5		5								5	5	5	

14

T																			
A	2	2	2	0	0	0	3	0	2	2	2		2	2	2	0	0	0	
B	2	2	2	0	0	0	2	0	2	2	2		2	2	2	0	0	0	
	0	0	0				0	0	0	0	0		0	0	0				
				5	5	5		5								5	5	5	

18

T																			
A	0	0	3	4	4	4	4	0	3	4	4	0	0	0	3	4	4	4	0
B	0	0	3	4	4	4	4	0	3	4	4	0	0	0	3	4	4	4	0
			1	2	2	2	2		1	2	2				1	2	2	2	
	5	5						5			5		5	5					5

22

T																			
A	0	0	3	4	4	4	4	0	3	4	4	0	0	0	3	4	4	4	4
B	0	0	3	4	4	4	4	0	3	4	4	0	0	0	3	4	4	4	4
			1	2	2	2	2		1	2	2				1	2	2	2	
	5	5						5			5		5	5					

2

28

T																			
A	2	2	2	0	2	3	2	0	2	2	2		2	2	2	0	2	3	
B	2	2	2	0	2	3	2	0	2	2	2		2	2	2	0	2	3	
	0	0	0		0	1	0		0	0	0		0	0	0		0	1	
				5				5								5			

8

T	3									3									
A	2	0	2	2	2		2	2	2	0	0	0	2	2	2	0	0	0	
B	2	0	2	2	2		2	2	2	0	0	0	2	2	2	0	0	0	
	0		0	0	0		0	0	0				0	0	0			0	
		5						5	5	5			5				5	5	5

43

T	3									3									
A	2	0	2	2	2		2	2	2	0	0	0	2	2	2	0	0	0	
B	2	0	2	2	2		2	2	2	0	0	0	2	2	2	0	0	0	
	0		0	0	0		0	0	0				0	0	0			0	
		5						5	5	5			5				5	5	5

47

T	0	3	4	4	0	0	0	3	4	4	4	4	0	0	0	3	4	4	4	1	2
A	0	3	4	4	0	0	0	3	4	4	4	4	0	0	0	3	4	4	4	1	2
B	0	3	4	4	0	0	0	3	4	4	4	4	0	0	0	3	4	4	4	1	2
	5	1	2	2	5	5	5	1	2	2	2	2	5	1	2	2	2	2	4		0

51

T	0	3	4	4	0	0	0	3	4	4	4	4	0	0	0	3	4	4	4	4
A	0	3	4	4	0	0	0	3	4	4	4	4	0	0	0	3	4	4	4	4
B	0	3	4	4	0	0	0	3	4	4	4	4	0	0	0	3	4	4	4	4
	5	1	2	2	5	5	5	1	2	2	2	2	5	1	2	2	2	2	2	

56

T						2																
A																						
B																						

58

T	0	0	0	0	0	0	0	0	0	0	0	0	0	0	0	0	0	0	0	0	0
A	5	5	5	5	5	5	5	5	5	5	5	5	5	5	5	5	5	5	5	5	5
B	10	10	10	10	10	10	10	10	10	10	10	10	10	10	10	10	10	10	10	10	10

60

T																					
A																					
B																					

69

T	2																					
A	2	2	2	2	0	0	0	2	2	2	2		2	2	2	0	0	0	2	2	2	2
B	2	2	2	2	0	0	0	2	2	2	2		2	2	2	0	0	0	2	2	2	2
	0	0	0	0	5	5	5	0	0	0	0		0	0	0	5	5	5	0	0	0	0

73

T								0	0												0	0	
A	2	2	2	2	0	2	3	3	3	3	3	3	3	3	3	0	0	0	0	0	0	0	0
B	0	0	0	0	0	1	1	1	1	1	1	1	1	1	1	5	5	5	5	5	5	5	5

77

T								0	0												0	0
A	0	0	0	0	0	0	0	3	3	3	3	3	3	3	3	0	0	0	0	0	0	0
B	5	5	5	5	5	5	5	1	1	1	1	1	1	1	1	5	5	5	5	5	5	5

	5 5 5 5 5 5 5 5 8 8 8 8 8 8 2 2	2 2 2 2 2 2 2 2 2 2 2 2 2 2 2 2
T		
A	0 0 0 0 0 0 0 0 0 0	
B	5 5 5 5 5 5 5 5 5 5	

84

	5 5 5 5 5 5 5 5 8 8 8 8 8 8 2 2	2 2 2 2 2 2 2 2 2 2 2 2 2 2 2 2
T		
A		
B		

86

	7 7 7 7 7 7 7 7 7 7 7 7 7 7 7 7	2 2 2 2 2 2 2 2 2 2 2 2 2 2 2 2
T		
A		
B		

88

	5 5 5 5 5 5 5 5 5 5 5 5 5 5 5	2 2 2 2 2 2 2 2 2 2 2 2 2 2 2 2	8
T			
A			
B			

98

T	3					3					
A	2	0	2	2	2	2	2	2	0	0	0
B	0	0	2	2	2	2	2	2	0	0	0
		5					5				5 5 5

102

T	3					3					
A	2	0	2	2	2	2	2	2	0	0	0
B	0	0	2	2	2	2	2	2	0	0	0
		5					5		5		5

105

♩ = 117,941190000117,00100,000005

T						5
A	2	2	2	0	0	
B	2	2	2	0	0	
	0	0	0	5	5	5

Silverchair - Freak

effects for grt 1

♩ = 120,000000

4

E																										
T																										
A	2	2	0	0	2	2	2	2	2	2	0	0	0	0	0	0	0	0	3	3	0	0	2	2	2	2
B	2	2	0	0	2	2	2	2	2	2	0	0	0	0	0	0	0	0	2	2	0	0	2	2	2	2
E	0	0			0	0	0	0	0	0								0				0	0	0	0	
A			5	5							5	5	5	5				5				5	5			

7

T																									
A	2	2	2	2	2	0	0	0	0	0	2	2	2	2	2	2	2	2	2	2	2	0	0	0	0
B	2	2	2	2	2	0	0	0	0	0	2	2	2	2	2	2	2	2	2	2	2	0	0	0	0
E	0	0	0	0	0						5	5	5	5				5				5	5	5	5

10

T																										
A	0	2	3	3	0	0	2	2	2	2	2	2	0	0	0	0	0	0	2	2	0	0	2	2	2	2
B	0	2	3	3	0	0	2	2	2	2	2	2	0	0	0	0	0	0	2	2	0	0	2	2	2	2
E	5	0			5	5							5	5	5	5			5			5	5			

13

T																									
A	2	2	2	2	2	0	0	0	0	0	0	2	2	2	2	2	2	2	2	2	2	0	0	0	0
B	2	2	2	2	2	0	0	0	0	0	0	2	2	2	2	2	2	2	2	2	2	0	0	0	0
E	0	0	0	0	0						5	5	5	5				5				5	5	5	5

16

T																										
A	0	2			0	0	2	2	2	2	2	2	0	0	0	0	0	0	2	2	0	0	2	2	2	2
B	0	2			0	0	2	2	2	2	2	2	0	0	0	0	0	0	2	2	0	0	2	2	2	2
E	5	0			5	5							5	5	5	5			5			5	5			

18

T																									
A	2		2	2	2	2	0	0	0	0	0	0	0	0	0	0	0	3	3	4	4	4	0	0	0
B	2		2	2	2	2	0	0	0	0	0	0	0	0	0	0	0	3	3	4	4	4	0	0	0
E	0		0	0	0	0												1	1	2	2	2			5

20

T																									
A	0		0	0	3	3	4	4	4	4	4	4	4	0	0	0	0	3	3	4	4	4	0	0	0
B	0		0	0	3	3	4	4	4	4	4	4	4	4	0	0	0	3	3	4	4	4	0	0	0
E	5		5	5	1	1	2	2	2	2	2	2	2	5			1	1	2	2	2				5

22

T																									
A	0		0	0	3	3	4	4	4	4	4	4	1	2	2	0	0	3	3	4	4	4	0	0	0
B	0		0	0	3	3	4	4	4	4	4	4	1	2	0	0	0	3	3	4	4	4	0	0	0
E	5		5	5	1	1	2	2	2	2	2	4			5		1	1	2	2	2				5

24

T																									
A	0		0	0	3	3	4	4	4	4	4	4	4	4	4	0	0	3	3	4	4	4	0	0	0
B	0		0	0	3	3	4	4	4	4	4	4	4	4	4	0	0	3	3	4	4	4	0	0	0
E	5		5	5	1	1	2	2	2	2	2	2	2	2	5		1	1	2	2	2				5

T																									
A	0		0	0	3	3	4	4	4	4	4	4	4	4	4	0	0								
B	0		0	0	3	3	4	4	4	4	4	4	4	4	4	0	0								
E	5		5	5	1	1	2	2	2	2	2	2	2	2	2										

T																						
A	2	2	0	0	2	2	2	2	2	0	0	2	3	3	2	0	0	2	2	2	2	2
B	0	0			0	0	0	0	0	0	0	0	1	1	0			0	0	0	0	0
			5	5						5	5						5	5				

30

T																						
A	2		2	2	2	2	0	0	2	3												
B	0		0	0	0	0	5	5	0	1			1									

7

39

T																						
A	3	3			0	0	2	2	2	2	2	2	0	0	0	0	0	0	0	0	0	0
B	2	2			0	0	2	2	2	2	2	2	0	0	0	0	0	0	0	0	0	0
					5	5							5	5	5	5	5	5	5	5		

42

T																							
A	2		2	2	2	2	0	0	0	0	0	0	0	2	2	2	2	2	2	0	0	0	0
B	0		0	0	0	0	5	5	5	5	5	5	0	2	2	2	2	2	2	0	0	0	0

45

T																							
A	0	3	3			0	0	2	2	2	2	2	2	2	2	0	0	0	0	0	0	0	
B	0	2	2			0	0	2	2	2	2	2	2	2	2	2	2	2	2	0	0	0	0
						5	5							5	5								

48

T																										
A	0	0	0	3	3	4	4	4	4	4	4	4	4	0	0	0	0	3	3	4	4	4	1	2		
B	0	0	0	3	3	4	4	4	4	4	4	4	4	4	0	0	0	3	3	4	4	4	4	0		
				5	5	5	1	1	2	2	2	2	2	2	5			5	5	5	1	1	2	2	2	4

51

T																								
A	2																							
B	0	0			3	3	4	4	4	4	0	0	0	0	3	3	4	4	4	4	4	4	4	
					5						5			5			5					5		5

54

T																							
A	0	0	0	3	3	4	4	4	4	4	4	4	4	4	4	4	4	4	4	4	4	4	4
B	0	0	0	3	3	4	4	4	4	4	4	4	4	4	4	4	4	4	4	4	4	4	4
				5	5	5	1	1	2	2	2	2	2	2	2	2	2	2	2	2	2	2	2

58

T																							
A	0	0	0	0	0	0	0	0	0	0	0	0	0	0	0	0	0	0	0	0	0	0	0
B	3	3	15	3	15	15	10	10	10	10	10	10	10	10	10	10	10	10	10	10	10	10	10
			?	?	?	?	?	?	?	?	?	?	?	?	?	?	?	?	?	?	?	?	?

59

T																							
A		2																					
B																							

5

T											3	3															
A	2	2	2	2	2	0	0	0	0	0	2		2	0	0	2	2	2	2	2	2	2	2	0	0	0	0
B	0	0	0	0	0	5	5	5	5	5	0		5	5	0	0	0	0	0	0	0	0	0	0	0	0	

70

T											3	3																	
A	0	2				0	0	2	2	2	2	2	2	2	2	2	0	0	0	0	0	2		0	0	2	2	2	2
B	0	2				0	0	2	2	2	2	0	2	2	2	2	0	0	0	0	0	2		0	0	2	2	2	2
	5	0				5	5	0	0	0	0	0	0	0	0	0	5	5	5	5	5	0		5	5	0	0	0	0

73

T											0 0						0									
A	2	2	2	2	2	0	0	2	3	3	3					3	0	0	0	0	0	0	0	0	0	0
B	0	0	0	0	0	5	5	0	1	1	1	1	1	1	1	1	3	0	0	0	0	0	0	0	0	0

76

T											0	0	0										
A														0	0	0							
B	3	3	3	3	3	3	3	3	3	3	3	3	3	0	0	0	0	0	0	0	0	0	0
	1	1	1	1	1	1	1	1	1	1	1	1	5	5	5	5	5	5	5	5	5	5	5

78

T											0	0	0										
A														0	0	0							
B	3	3	3	3	3	3	3	3	3	3	3	3	3	0	0	0	0	0	0	0	0	0	
	1	1	1	1	1	1	1	1	1	1	1	1	5	5	5	5	5	5	5	5	5	5	5

80

T											0	0	0										
A														0	0	0							
B	3	3	3	3	3	3	3	3	3	3	3	3	3	0	0	0	0	0	0	0	0	0	
	1	1	1	1	1	1	1	1	1	1	1	1	5	5	5	5	5	5	5	5	5	5	5

82

	5	5	5	5	5	5	5	8	8	8	8	8	8	8	2	2	2	2	2	2	2	2	2	2	2	2	2	2
T																												
A																												
B																												

84

	5	5	5	5	5	5	5	8	8	8	8	8	8	8	2	2	2	2	2	2	2	2	2	2	2	2	2	2
T																												
A																												
B																												

86

	7	7	7	7	7	7	7	7	7	7	7	7	7	7	7	2	2	2	2	2	2	2	2	2	2	2	2
T																											
A																											
B																											

88

	5	5	5	5	5	5	5	5	5	5	5	5	5	5	5	2	2	2	2	2	2	2	2	2	2	2	2
T																											
A																											
B																											

8

T																	3				3									
A	3	3							2	2	2	2	2	2	0	0	0	0	0	2					0	0	2	2	2	2
B	2	2	0	0	2	2	2	2	2	2	2	2	2	0	0	0	0	0	2					0	0	2	2	2	2	
	0	0			0	0	0	0	0	0	0	0	0	0	0	0	0	0						5	5	0	0	0	0	
			5	5									5	5	5	5	5								5	5				

101

T									3				3																
A	2	2	2	2	2	0	0	0	0	0	2				0	0	2	2	2	2	2	2	2	2	2	0	0	0	0
B	2	2	2	2	2	0	0	0	0	0	2				0	0	2	2	2	2	2	2	2	2	2	0	0	0	0
	0	0	0	0	0					0					0	0	0	0	0	0	0	0	0	0					
						5	5	5	5	5					5	5													

104

♩ = 1 1 7 1 0 9 0 0 0 5 1 5 7 9 0 0 0 0

T																												
A	0		3												2	2	2	2	2	2	2	2	2	2	0	0	0	0
B	0	2		2					0	2					2	2	2	2	2	2	2	2	2	0	0	0	0	
		0							0						0	0	0	0	0	0	0	0	0					
	5																						5	5	5	5		

106

4

T																
A	0	-----														
B	0	-----														
	5															

Silverchair - Freak

bass

♩ = 120,000000

4



8



12



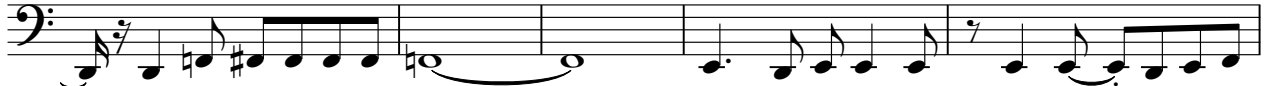
16



20



24



29



33



37



41



V.S.

45



49



53



57



61



66



70



74



78



82



86

A single musical staff in bass clef containing four measures of music. The first measure has a quarter rest followed by eighth notes. The second measure has a quarter rest followed by eighth notes. The third measure has a quarter rest followed by eighth notes. The fourth measure has a quarter rest followed by eighth notes.

90

A single musical staff in bass clef containing four measures of music. The first measure has a quarter rest followed by eighth notes. The second measure has a quarter rest followed by eighth notes. The third measure has a quarter rest followed by eighth notes. The fourth measure has a quarter rest followed by eighth notes.

94

A single musical staff in bass clef containing four measures of music. The first measure has a quarter rest followed by eighth notes. The second measure has a quarter rest followed by eighth notes. The third measure has a quarter rest followed by eighth notes. The fourth measure has a quarter rest followed by eighth notes.

98

A single musical staff in bass clef containing four measures of music. The first measure has a quarter note, eighth notes, eighth notes, eighth notes, eighth notes. The second measure has a quarter note, eighth notes, eighth notes, eighth notes, eighth notes. The third measure has a quarter note, eighth notes, eighth notes, eighth notes, eighth notes. The fourth measure has a quarter note, eighth notes, eighth notes, eighth notes, eighth notes.

102

A single musical staff in bass clef containing four measures of music. The first measure has a quarter note, eighth notes, eighth notes, eighth notes, eighth notes. The second measure has a quarter note, eighth notes, eighth notes, eighth notes, eighth notes. The third measure has a quarter note, eighth notes, eighth notes, eighth notes, eighth notes. The fourth measure has a quarter note, eighth notes, eighth notes, eighth notes, eighth notes.

105

♩ = 1.1666666666666667

A single musical staff in bass clef containing four measures of music. The first measure has a quarter note, eighth notes, eighth notes, eighth notes, eighth notes. The second measure has a quarter note, eighth notes, eighth notes, eighth notes, eighth notes. The third measure has a quarter note, eighth notes, eighth notes, eighth notes, eighth notes. The fourth measure has a quarter note, eighth notes, eighth notes, eighth notes, eighth notes.