

Simple plan - Addicted

♩ = 142,000076

Drums 


Guitar 1 


Guitar 2 

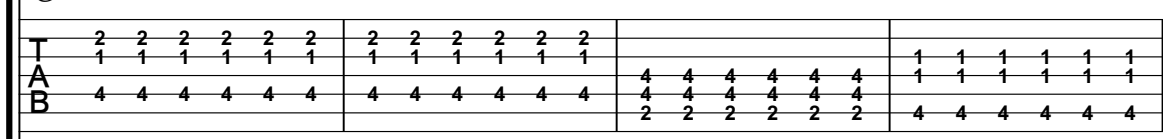
Guitar 3 


Bass 

5 

Drums 

Guitar 1 

Guitar 2 

Bass 

25

Drums

Guitar 2

Bass

28

Drums

Guitar 2

Bass

33

Drums

Guitar 2

Bass

38

Drums

Guitar 2

Bass

43

Drums

Guitar 2

Bass

48

Drums

Guitar 1

Guitar 2

Bass

53

Drums

Guitar 1

Guitar 2

Bass

57

Drums

Guitar 1

Guitar 2

Bass

T						1	1	1	1	1	1	2		2
A	4	4	4	4	4	1	1	1	1	1	1	1		1
B	4	4	4	4	4	4	4	4	4	4	4	4		4

61

Drums

Guitar 2

Bass

T	2													
A	1													
B	4													

66

Drums

Guitar 2

Bass

T															
A				0	0	0	6	0	0	0	0	0	6	0	0
B				0	0	0	4	0	0	0	0	0	4	0	0

69

Drums

Guitar 2

Bass

T															
A	0	0	0	6	0	0	0	0	0	6	0	0	0	0	0
B	0	0	0	4	0	0	0	0	0	4	0	0	0	0	0

72

Drums

Guitar 2

Bass

76

Drums

Guitar 2

Bass

81

Drums

Guitar 2

Bass

86

Drums

Guitar 2

Bass

91

Drums

Guitar 2

Bass

96

Drums

Guitar 2

Guitar 3

Bass

101

Guitar 2

Guitar 3

Bass

106

Guitar 3

111

Drums

Guitar 2

Guitar 3

Bass

116

Drums

Guitar 2

Bass

120

Drums

Guitar 2

Bass

124

Drums

Guitar 2

Bass

128

Drums

Guitar 2

T 1 1 1 1 1 1 | 4 4 4 4 4 4 | 4 4 4 4 4 4 | 1 1 1 1 1 1

A 1 1 1 1 1 1 | 4 4 4 4 4 4 | 4 4 4 4 4 4 | 1 1 1 1 1 1

B 4 4 4 4 4 4 | 2 2 2 2 2 2 | 2 2 2 2 2 2 | 4 4 4 4 4 4

Bass

132

Drums

Guitar 2

T 1 1 1 | 2 2 2 2 2 2 | 2 2 2 2 2 2 | 1 1 1 1 1 1 | 1 1 1 1 1 1

A 1 1 1 0 0 0 | 1 1 1 1 1 1 | 1 1 1 1 1 1 | 4 4 4 4 1 | 1 1 1 1 1 1

B 4 4 4 5 5 5 | 4 4 4 4 4 4 | 4 4 4 4 4 4 | 4 4 4 4 2 4 | 4 4 4 4 4 4

Bass

137

Drums

Guitar 2

T 2 2 2 2 2 2 | 2 2 2 2 2 2 | 1 1 1 1 1 1 | 1 1 1 1 1 1 | 2 2 2 2 2 2

A 1 1 1 1 1 1 | 1 1 1 1 1 1 | 4 4 4 4 1 | 1 1 1 1 1 1 | 1 1 1 1 1 1

B 4 4 4 4 4 4 | 4 4 4 4 4 4 | 4 4 4 4 2 4 | 4 4 4 4 4 4 | 4 4 4 4 4 4

Bass

142

Drums

Guitar 2

T 2 2 2 2 2 2 | 4 4 4 4 1 | 1 1 1 1 1 1 | 2 2 2 2 2 2 | 2 2 2 2 2 2

A 1 1 1 1 1 1 | 4 4 4 4 1 | 1 1 1 1 1 1 | 1 1 1 1 1 1 | 1 1 1 1 1 1

B 4 4 4 4 4 4 | 4 4 4 4 2 4 | 4 4 4 4 4 4 | 4 4 4 4 4 4 | 4 4 4 4 4 4

Bass

147

Drums

Guitar 2

T	4 4 4 4 1	1 1 1 4 3	6 6 3 3 3	4 4 2 2 2	1 1 1 1 1
A	4 4 4 4	4 4 4 2 1	6 6 3 3 3	4 4 4 4 4	1 1 1 1 1
B	2 2 2 2 4	4 4 4 2 1	6 6 1 1 1	2 2 2 4 4 4	4 4 4 4 4

Bass

152

Drums

Guitar 2

T	1 1 1 4 3	6 6 3 3 3	4 4 2 2 2	1 1 1 1 1 1	1 1 1 1 1 1
A	1 1 1 4 3	6 6 3 3 3	4 4 4 4 4	1 1 1 1 1 1	1 1 1 1 1 1
B	4 4 4 2 1	6 6 1 1 1	2 2 2 4 4 4	4 4 4 4 4 4	4 4 4 4 4 4

Bass

157

Drums

Guitar 1

Guitar 2

T	2 1	2 1	2 2 2 1 1 1	2 2 2 2 2 2	2 2 2 2 2 2
A	1	1	1 1 1 1 1 1	1 1 1 1 1 1	1 1 1 1 1 1
B	4	4	4 4 4 4 4 4	4 4 4 4 4 4	4 4 4 4 4 4

Bass

161

Drums

Guitar 1

Guitar 2

T	4 4 4 4 4 4	1 1 1 1 1 1	2 2 2 2 2 2	2 2 2 2 2 2
A	4 4 4 4 4 4	1 1 1 1 1 1	1 1 1 1 1 1	1 1 1 1 1 1
B	2 2 2 2 2 2	4 4 4 4 4 4	4 4 4 4 4 4	4 4 4 4 4 4

Bass

165

Drums

Guitar 1

Guitar 2

Bass

Detailed description: This system covers measures 165 to 168. The drums play a consistent pattern of eighth notes on the snare and bass drum. Guitar 1 plays a melodic line with eighth notes and some ties. Guitar 2 provides a rhythmic accompaniment with a mix of eighth and sixteenth notes. The bass line follows a similar eighth-note pattern. A double bar line is present at the end of measure 168.

169

Drums

Guitar 1

Guitar 2

Bass

Detailed description: This system covers measures 169 to 172. The drum pattern continues. Guitar 1's melodic line evolves with some ties. Guitar 2's accompaniment remains consistent. The bass line continues with eighth notes. A double bar line is present at the end of measure 172.

173

Drums

Guitar 1

Guitar 2

Bass

Detailed description: This system covers measures 173 to 176. In measure 173, the drums play a pattern of eighth notes. In measure 174, the drums play a pattern of eighth notes. In measure 175, the drums play a pattern of eighth notes. In measure 176, the drums play a pattern of eighth notes. Guitar 1 plays a melodic line with eighth notes and some ties. Guitar 2 provides a rhythmic accompaniment with a mix of eighth and sixteenth notes. The bass line follows a similar eighth-note pattern. A double bar line is present at the end of measure 176.

Simple plan - Addicted

Drums

♩ = 142,000076

4

9

14

19

24

29

35

41

47

54

V.S.

Drums

59

64

69

74

80

86

92

97

115

120

125

Musical notation for measure 125, featuring a drum staff with a series of eighth notes and rests, and a guitar staff with a corresponding rhythmic pattern.

130

Musical notation for measure 130, featuring a drum staff with a series of eighth notes and rests, and a guitar staff with a corresponding rhythmic pattern.

135

Musical notation for measure 135, featuring a drum staff with a series of eighth notes and rests, and a guitar staff with a corresponding rhythmic pattern.

141

Musical notation for measure 141, featuring a drum staff with a series of eighth notes and rests, and a guitar staff with a corresponding rhythmic pattern.

147

Musical notation for measure 147, featuring a drum staff with a series of eighth notes and rests, and a guitar staff with a corresponding rhythmic pattern.

152

Musical notation for measure 152, featuring a drum staff with a series of eighth notes and rests, and a guitar staff with a corresponding rhythmic pattern.

158

Musical notation for measure 158, featuring a drum staff with a series of eighth notes and rests, and a guitar staff with a corresponding rhythmic pattern.

164

Musical notation for measure 164, featuring a drum staff with a series of eighth notes and rests, and a guitar staff with a corresponding rhythmic pattern.

169

Musical notation for measure 169, featuring a drum staff with a series of eighth notes and rests, and a guitar staff with a corresponding rhythmic pattern.

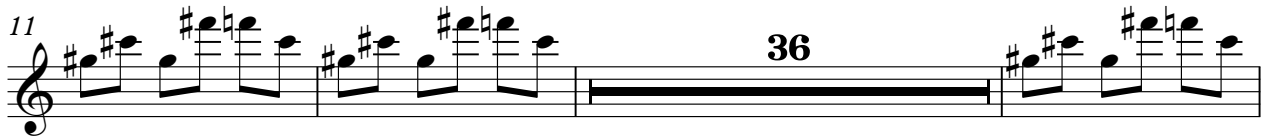
173

Musical notation for measure 173, featuring a drum staff with a series of eighth notes and rests, and a guitar staff with a corresponding rhythmic pattern.

Simple plan - Addicted

Guitar 1

♩ = 142,000076



Simple plan - Addicted

Guitar 2

♩ = 142,000076

4

E																			
T																			
A																			
B																			
D																			
G																			
E																			

9

T	2 2 2 2 2 2	2 2 2 2 2 2																	
A	1 1 1 1 1 1	1 1 1 1 1 1																	
B	4 4 4 4 4 4	4 4 4 4 4 4																	

16

4

T																			
A																			
B																			

23

T																			
A	0 0 0	6 0 0	0 0 0	6 0 0	0 0 0	6 0 0	0 0 0	6 0 0	0 0 0	4 0 0	0 0 0	4 0 0	0 0 0	4 0 0	0 0 0	5 5 5	2	5 5	5 5
B	0 0 0	4 0 0	0 0 0	4 0 0	0 0 0	4 0 0	0 0 0	4 0 0	0 0 0	4 0 0	0 0 0	4 0 0	0 0 0	4 0 0	0 0 0	5 5 5	2	5 5	5 5

26

T																			
A																			
B	0 0 0	4 0 0	0 0 0	4 0 0	0 0 0	4 0 0	0 0 0	4 0 0	0 0 0	4 0 0	0 0 0	4 0 0	0 0 0	4 0 0	0 0 0	5 5 5	2	5 5	5 5

30

T	4 4 4 4 4 4	2 2 2 2 2 2	4																
A	3 3 3 3 3 3	2 2 2 2 2 2	4																
B	1 1 1 1 1 1	4 4 4 4 4 4	6																

36

T	1 1 1 1 1 1	2 2 2 2 2 2	2 2 2 2 2 2																
A	1 1 1 1 1 1	1 1 1 1 1 1	1 1 1 1 1 1																
B	4 4 4 4 4 4	4 4 4 4 4 4	4 4 4 4 4 4																

42

T																			
A	4 4	1 1 1	1 1 1 1 1 1	1 1 1 1 1 1	1 1 1 1 1 1	1 1 1 1 1 1	1 1 1 1 1 1	1 1 1 1 1 1	1 1 1 1 1 1	1 1 1 1 1 1	1 1 1 1 1 1	1 1 1 1 1 1	1 1 1 1 1 1	1 1 1 1 1 1	1 1 1 1 1 1	1 1 1 1 1 1	1 1 1 1 1 1	1 1 1 1 1 1	1 1 1 1 1 1
B	4 4	4 4 4 4 4 4	4 4 4 4 4 4	4 4 4 4 4 4	4 4 4 4 4 4	4 4 4 4 4 4	4 4 4 4 4 4	4 4 4 4 4 4	4 4 4 4 4 4	4 4 4 4 4 4	4 4 4 4 4 4	4 4 4 4 4 4	4 4 4 4 4 4	4 4 4 4 4 4	4 4 4 4 4 4	4 4 4 4 4 4	4 4 4 4 4 4	4 4 4 4 4 4	4 4 4 4 4 4

48

T																			
A	1	2	2 2	2 2 2 2 2 2	2 2 2 2 2 2	2 2 2 2 2 2	2 2 2 2 2 2	2 2 2 2 2 2	2 2 2 2 2 2	2 2 2 2 2 2	2 2 2 2 2 2	2 2 2 2 2 2	2 2 2 2 2 2	2 2 2 2 2 2	2 2 2 2 2 2	2 2 2 2 2 2	2 2 2 2 2 2	2 2 2 2 2 2	2 2 2 2 2 2
B	4	4	4 4	4 4 4 4 4 4	4 4 4 4 4 4	4 4 4 4 4 4	4 4 4 4 4 4	4 4 4 4 4 4	4 4 4 4 4 4	4 4 4 4 4 4	4 4 4 4 4 4	4 4 4 4 4 4	4 4 4 4 4 4	4 4 4 4 4 4	4 4 4 4 4 4	4 4 4 4 4 4	4 4 4 4 4 4	4 4 4 4 4 4	4 4 4 4 4 4

54

T																			
A	1 1 1 1 1 1	2 2 2 2 2 2	2 2 2 2 2 2																
B	4 4 4 4 4 4	4 4 4 4 4 4	4 4 4 4 4 4																

V.S.

T	1 1 1 1 1 1	1 1 1 1 1 1			1 1 1 1 1 1
A	1 1 1 1 1 1	1 1 1 1 1 1	4 4 4 4 4 4	4 4 4 4 4 4	1 1 1 1 1 1
B	4 4 4 4 4 4	4 4 4 4 4 4	2 2 2 2 2 2	2 2 2 2 2 2	4 4 4 4 4 4

132

T	1 1 1	2 2 2 2 2 2	2 2 2 2 2 2		1	1 1 1 1 1
A	1 1 1 0 0 0	1 1 1 1 1 1	1 1 1 1 1 1	4 4 4 4 4 4	4 4 4 4 4 4	1 1 1 1 1
B	4 4 4 5 5 5	4 4 4 4 4 4	4 4 4 4 4 4	2 2 2 2 4	4 4 4 4 4	4 4 4 4 4

137

T	2 2 2 2 2 2	2 2 2 2 2 2		1	1 1 1 1 1	2 2 2 2 2 2
A	1 1 1 1 1 1	1 1 1 1 1 1	4 4 4 4 4 4	4 4 4 4 4 4	1 1 1 1 1	1 1 1 1 1
B	4 4 4 4 4 4	4 4 4 4 4 4	2 2 2 2 4	4 4 4 4 4	4 4 4 4 4	4 4 4 4 4

142

T	2 2 2 2 2 2		1	1 1 1 1 1	2 2 2 2 2 2	2 2 2 2 2 2		1
A	1 1 1 1 1 1	4 4 4 4 4 4	1 1 1 1 1	1 1 1 1 1	1 1 1 1 1 1	1 1 1 1 1 1	4 4 4 4 4 4	4 4 4 4 4 4
B	4 4 4 4 4 4	4 4 4 4 4 4	2 2 2 2 4	4 4 4 4 4	4 4 4 4 4 4	4 4 4 4 4 4	4 4 4 4 4 4	2 2 2 2 4

148

T	1 1 1		2 2 2	1 1 1 1 1	1 1 1		
A	1 1 1 4 3	6 6 3 3 3	4 4	1 1 1 1 1	1 1 1 4 3	6 6 3 3 3	6 6 3 3 3
B	4 4 4 2 1	6 6 1 1 1	2 2	4 4 4 4 4	4 4 4 2 1	6 6 1 1 1	6 6

154

T	2 2 2	1 1 1 1 1 1	1 1 1 1 1 1	2	2 2 2 2	2 2 2 2 2 2
A	4 4 4 1 1 1	1 1 1 1 1 1	1 1 1 1 1 1	4	4 4 4 4	4 4 4 4 4 4
B	4 4 4 4 4 4	4 4 4 4 4 4	4 4 4 4 4 4	4	4 4 4 4	4 4 4 4 4 4

160

T	2 2 2 2 2 2		1 1 1 1 1 1	2 2 2 2 2 2	2 2 2 2 2 2
A	1 1 1 1 1 1	4 4 4 4 4 4	1 1 1 1 1 1	1 1 1 1 1 1	1 1 1 1 1 1
B	4 4 4 4 4 4	4 4 4 4 4 4	2 2 2 2 2 2	4 4 4 4 4 4	4 4 4 4 4 4

165

T		1 1 1 1 1 1	2 2 2 2 2 2	2 2 2 2 2 2	
A	4 4 4 4 4 4	1 1 1 1 1 1	1 1 1 1 1 1	1 1 1 1 1 1	4 4 4 4 4 4
B	2 2 2 2 2 2	4 4 4 4 4 4	4 4 4 4 4 4	4 4 4 4 4 4	2 2 2 2 2 2

170

T	1 1 1 1 1 1	2 2 2 2 2 2	2 2 2 2 2 2
A	1 1 1 1 1 1	1 1 1 1 1 1	1 1 1 1 1 1
B	4 4 4 4 4 4	4 4 4 4 4 4	4 4 4 4 4 4

173

T		1 1 1 1 1 1	2	2
A	4 4 4 4 4 4	1 1 1 1 1 1	4	4
B	2 2 2 2 2 2	4 4 4 4 4 4		

Simple plan - Addicted

Bass

♩ = 142,000076

4

9

14

19

24

29

34

39

45

52

V.S.

57



62



67



72



77



82



88



94



100

13



117



122



173

