

SMAS - SMB3 - World 7 Map

♩ = 122,999969

World 7 Map

Sequenced by:

Composed by:

Koji Kondo

3

World 7 Map

Sequenced by:

Composed by:

Koji Kondo

6

World 7 Map

Sequenced by:

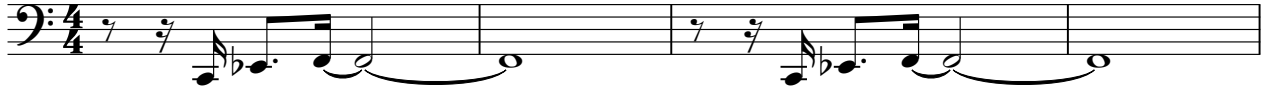
Composed by:

Koji Kondo

World 7 Map

SMAS - SMB3 - World 7 Map

♩ = 122,999969



5



Sequenced by:

SMAS - SMB3 - World 7 Map

♩ = 122,999969

Musical notation for the first system, featuring a treble clef, a 4/4 time signature, and a key signature of one sharp (F#). The notation includes a series of eighth notes with slurs and accents, and a bass line with chords and single notes. The tempo is marked as 122,999969 BPM.

5

Musical notation for the second system, starting at measure 5. It continues the same notation style as the first system, with eighth notes, slurs, and accents in the treble clef, and chords and single notes in the bass line.

Composed by:

SMAS - SMB3 - World 7 Map

♩ = 122,999969



♩ = 122,999969



The first staff of music is written in 4/4 time. It begins with a treble clef and a key signature of one flat (Bb). The tempo is marked as ♩ = 122,999969. The melody consists of several measures of music, including eighth and sixteenth notes, and ends with a triplet of eighth notes.

5



The second staff of music is written in 4/4 time. It begins with a treble clef and a key signature of one flat (Bb). The melody continues from the first staff and ends with a triplet of eighth notes. The number '5' is written above the first measure.